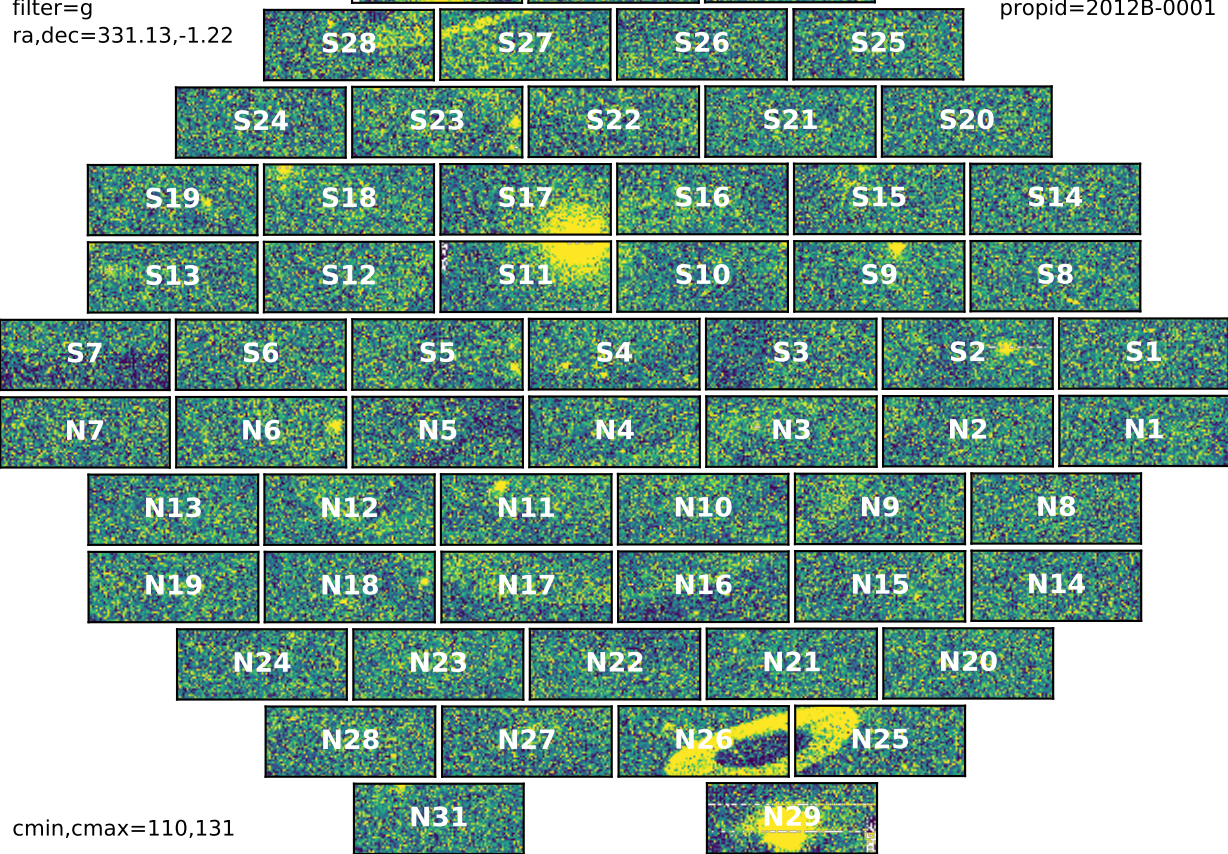


c4d_130905_014744_ooi_g_v1.fits.gz
expnum=230840
filter=g
ra,dec=331.13,-1.22

S31 S30 S29

object=DES survey hex -283-4 tiling 3
dateobs=2013-09-05
propid=2012B-0001



cmin,cmax=110,131

c4d_130908_031025_ooi_g_v1.fits.gz
expnum=231495
filter=g
ra,dec=331.72,0.38

S31 S30 S29

object=DES survey hex -283-4 tiling 4
dateobs=2013-09-08
propid=2012B-0001

S28 S27 S26 S25

S24 S23 S22 S21 S20

S19 S18 S17 S16 S15 S14

S13 S12 S11 S10 S9 S8

S7 S6 S5 S4 S3 S2 S1

N7 N6 N5 N4 N3 N2 N1

N13 N12 N11 N10 N9 N8

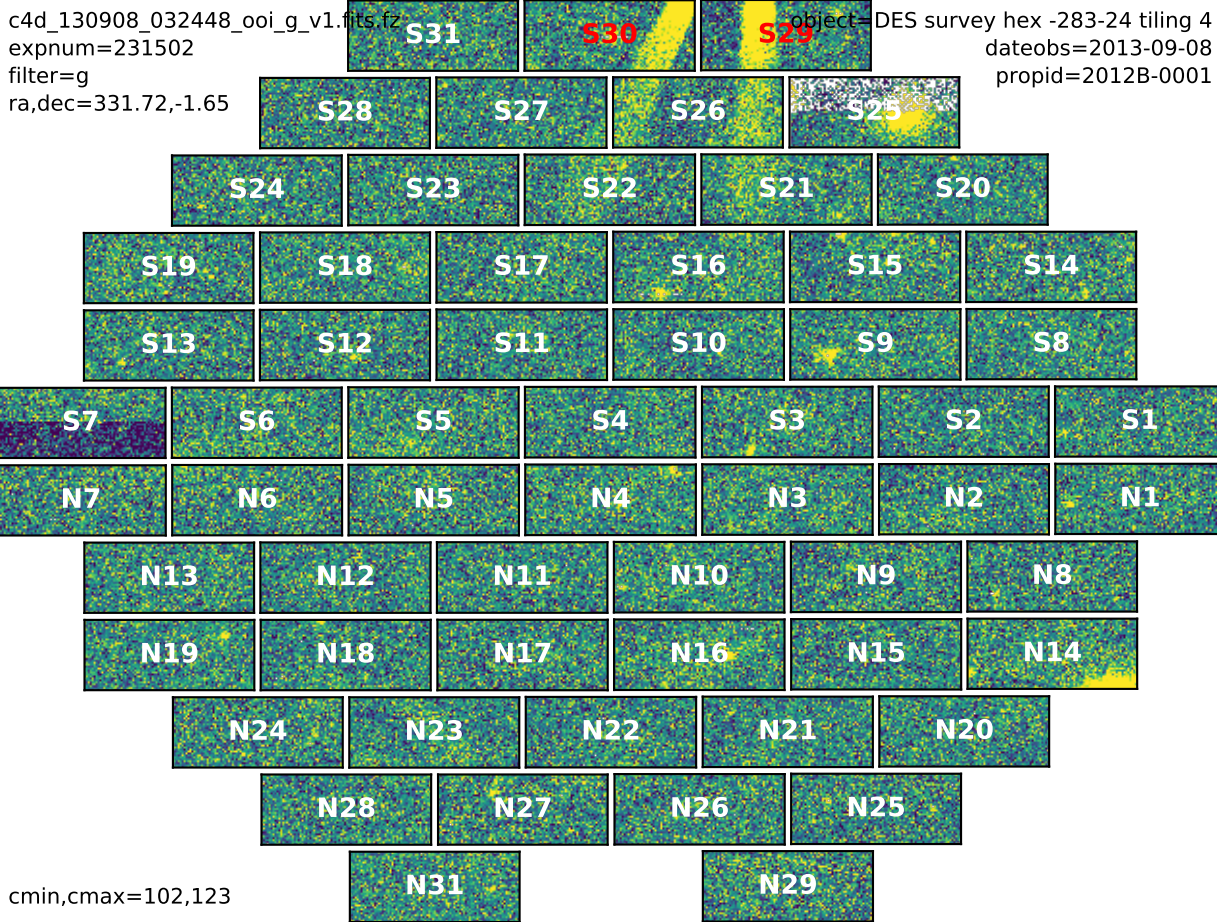
N19 N18 N17 N16 N15 N14

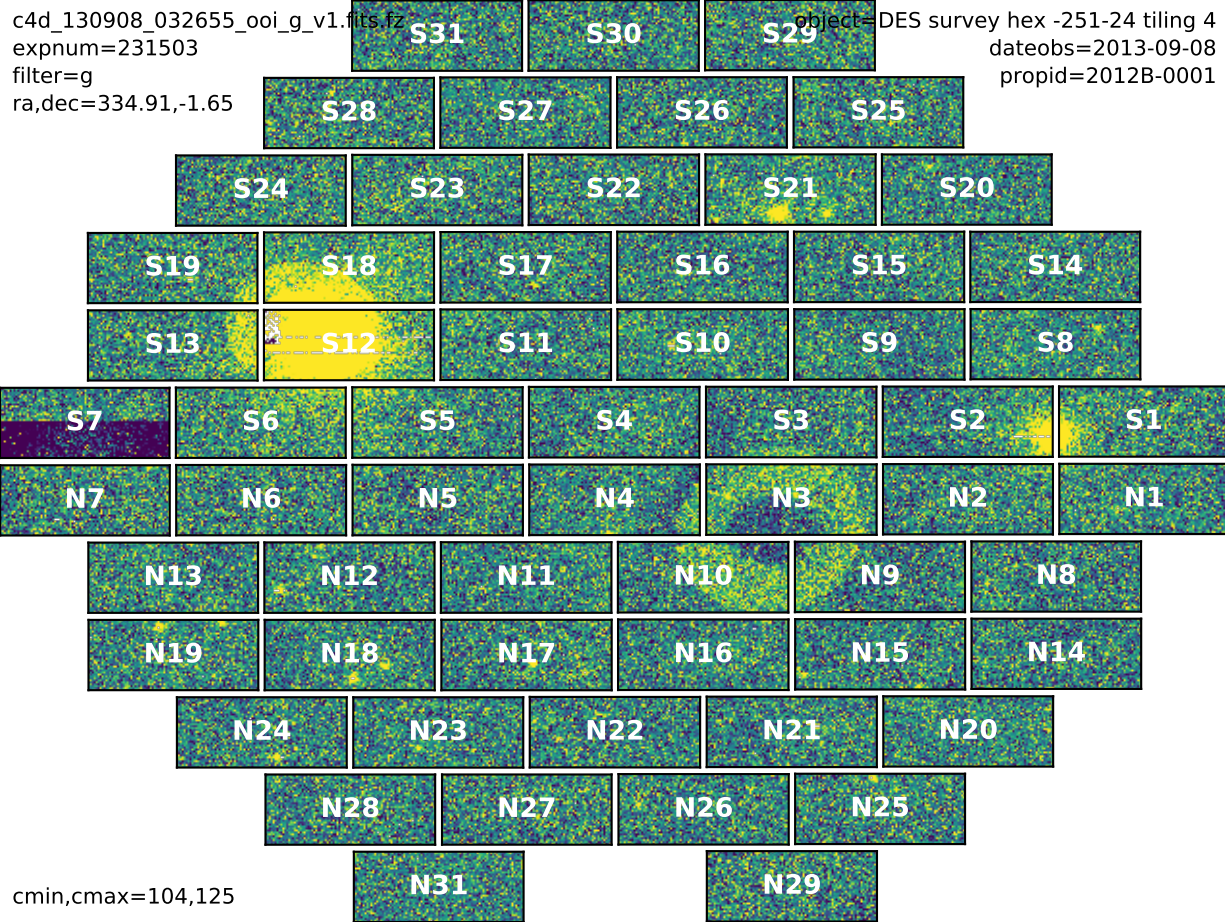
N24 N23 N22 N21 N20

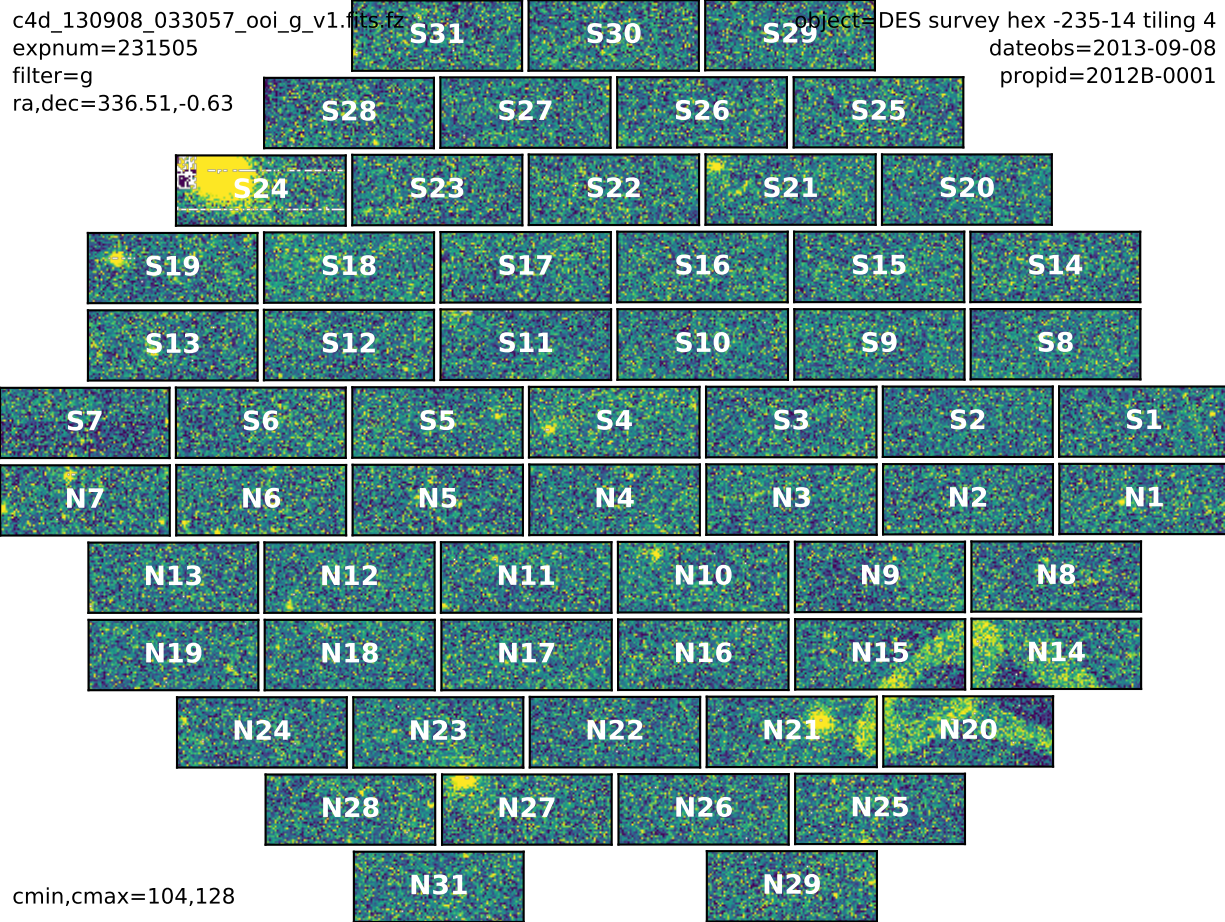
N28 N27 N26 N25

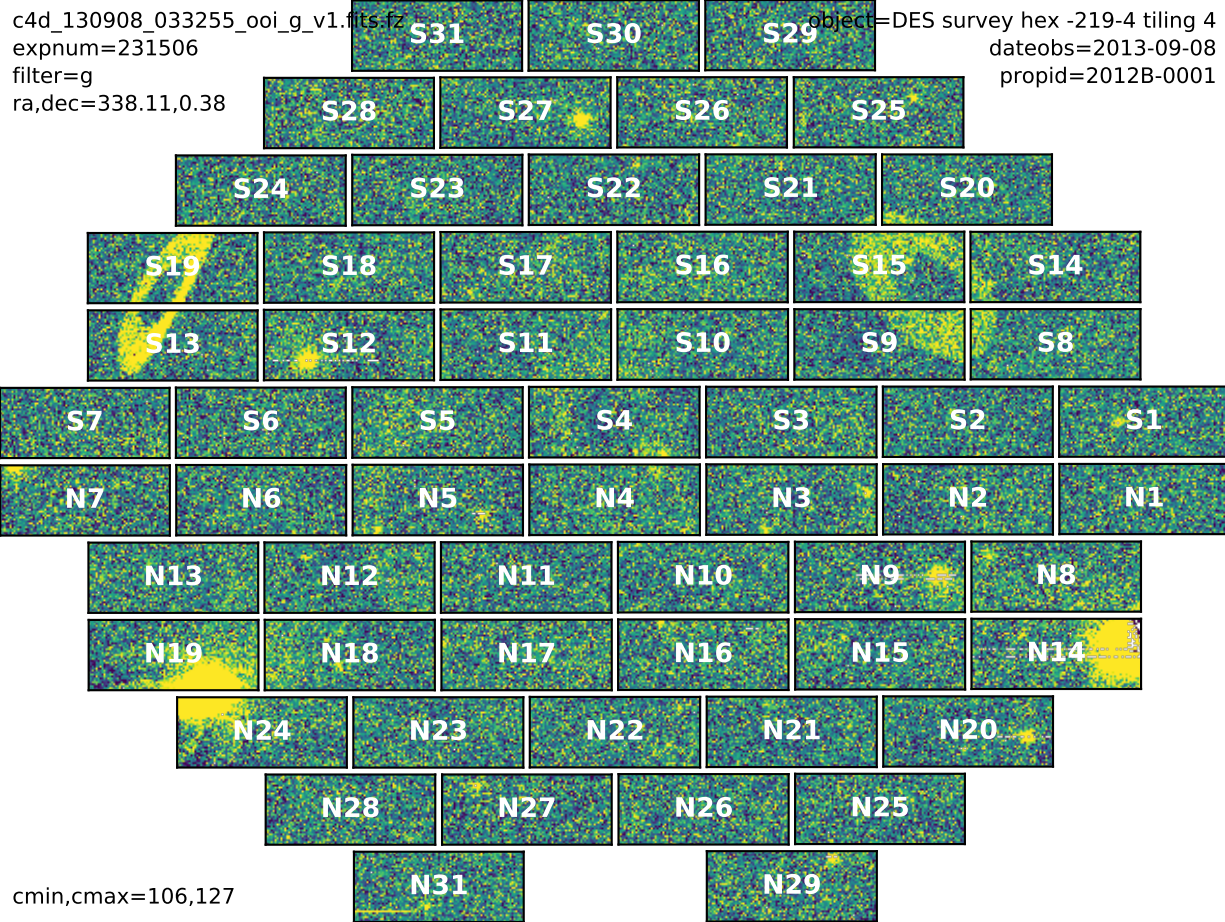
N31 N29

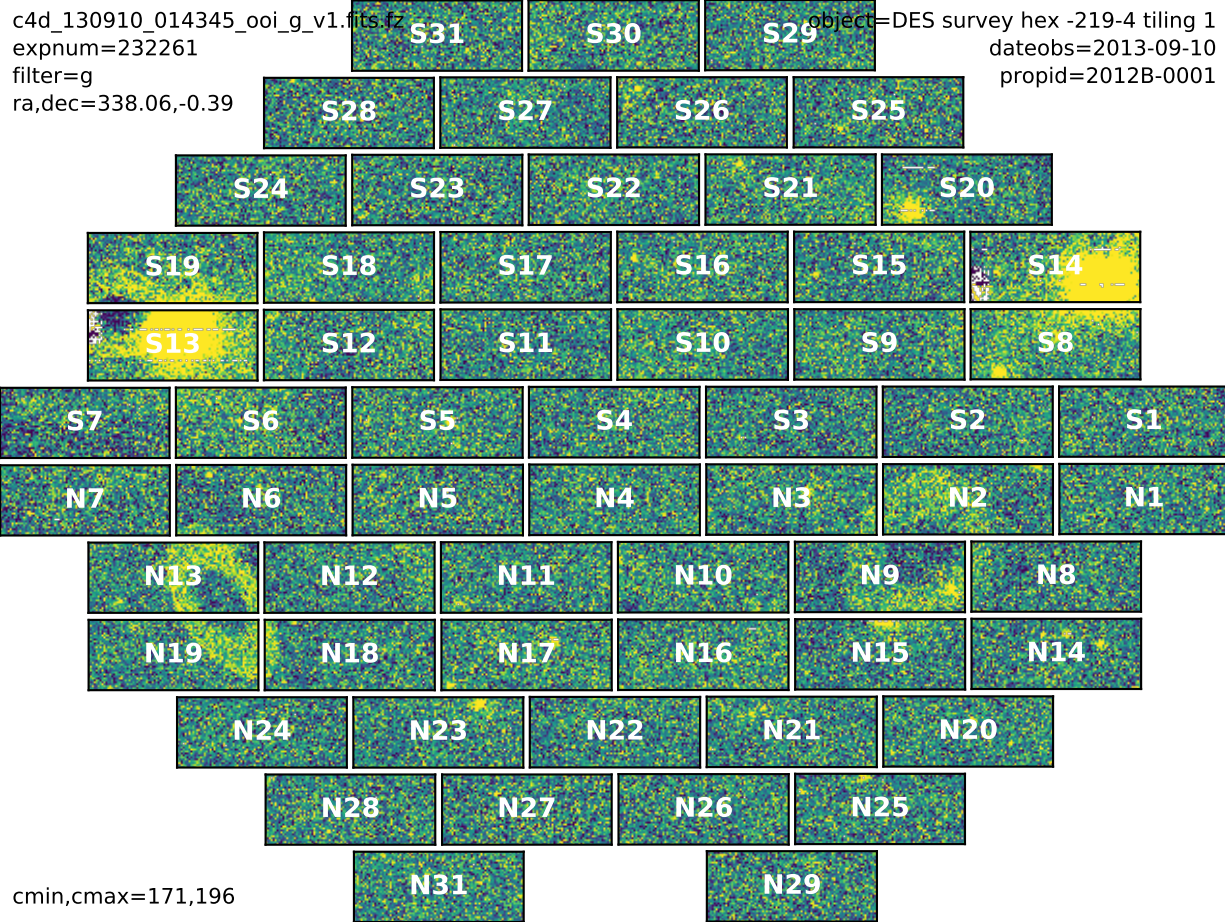
cmin,cmax=102,122





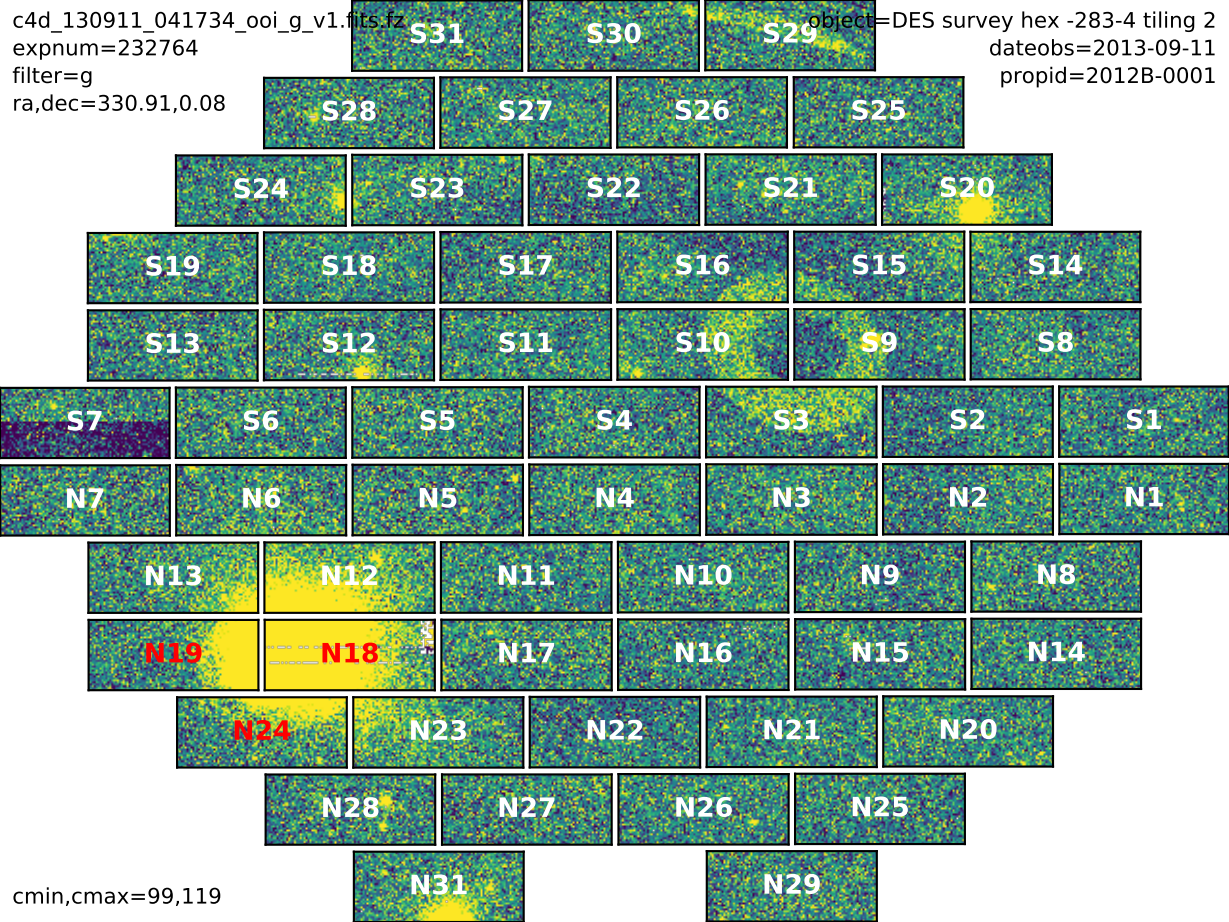




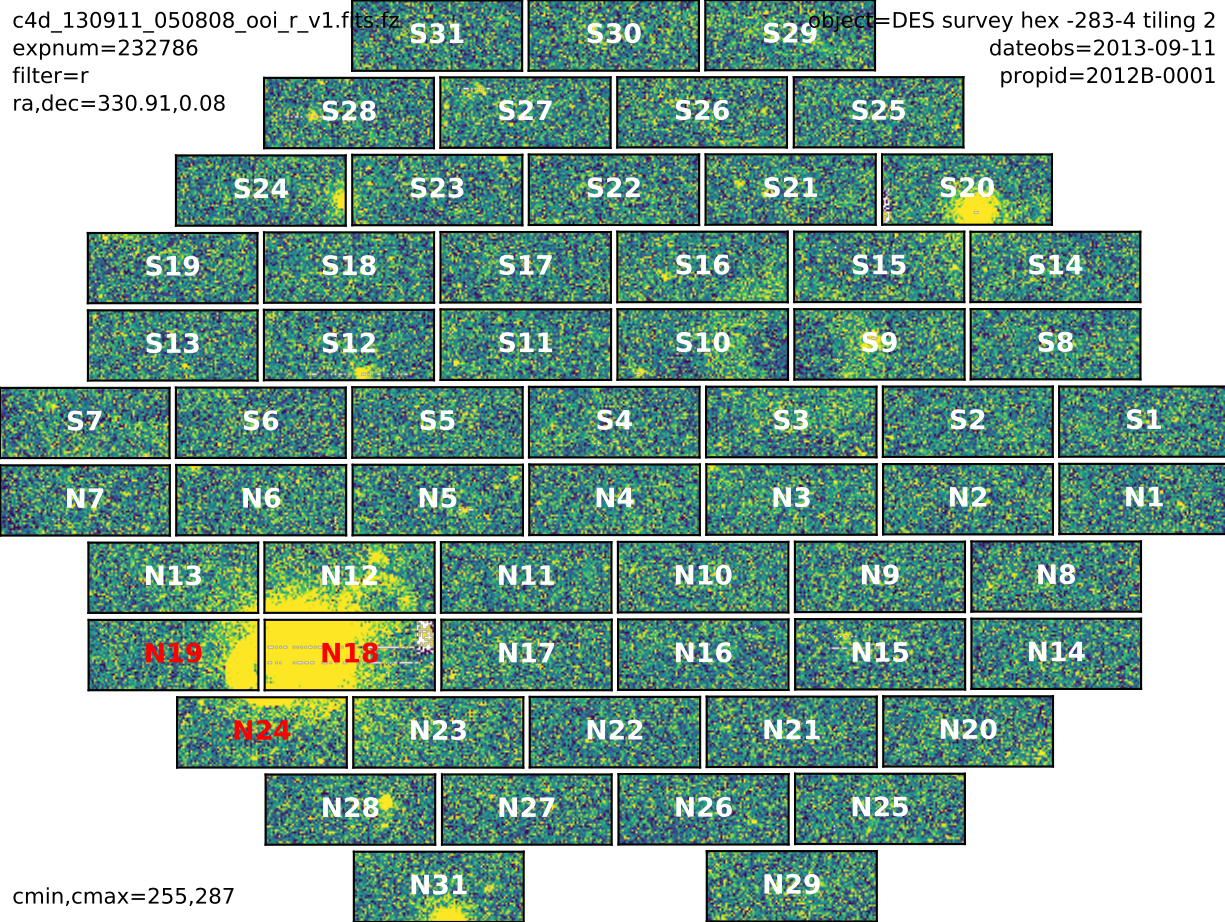


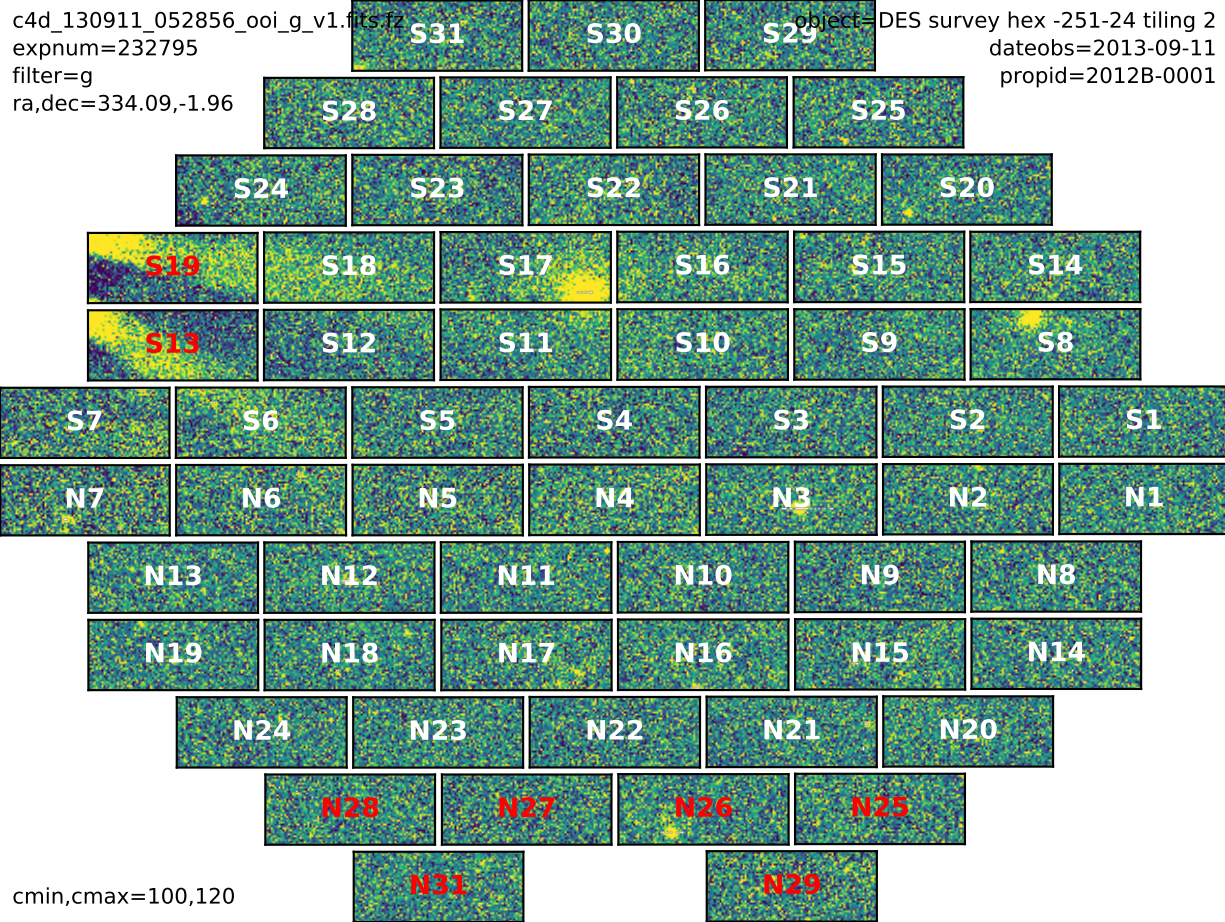
c4d_130911_041734_ooi_g_v1.fits.gz
expnum=232764
filter=g
ra,dec=330.91,0.08

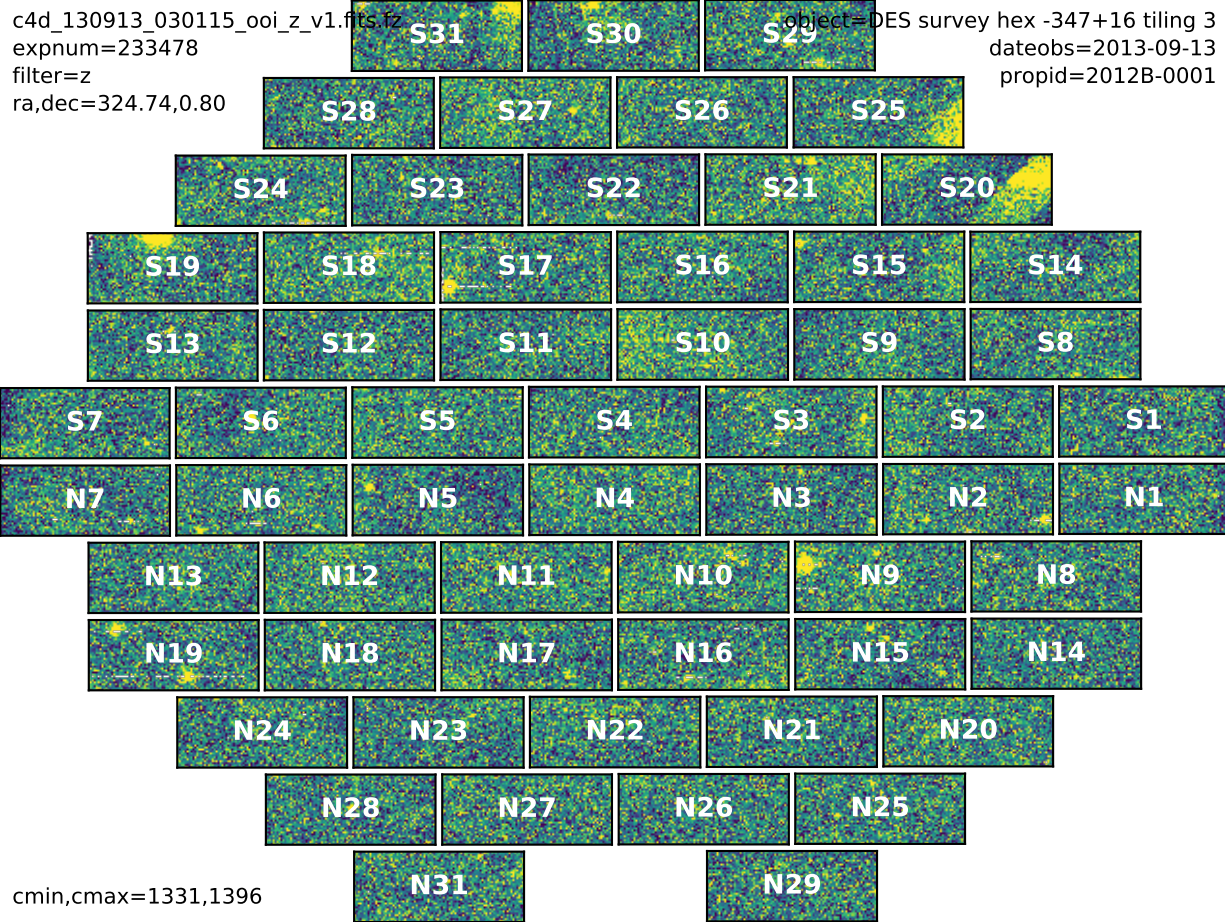
object=DES survey hex -283-4 tiling 2
dateobs=2013-09-11
propid=2012B-0001



cmin,cmax=99,119

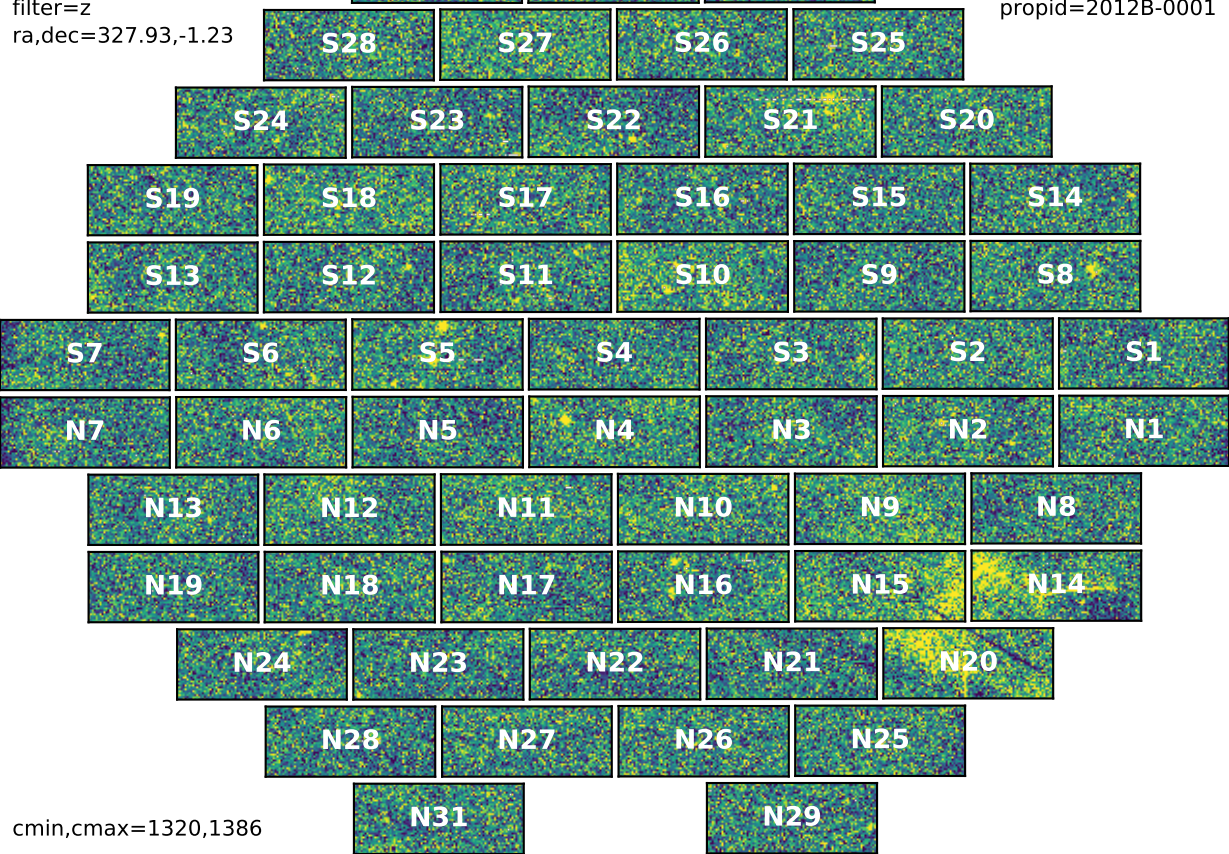






c4d_130913_033544_ooi_z_v1.fits.gz
expnum=233495
filter=z
ra,dec=327.93,-1.23

object=DES survey hex -315-4 tiling 3
dateobs=2013-09-13
propid=2012B-0001

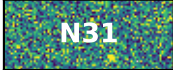
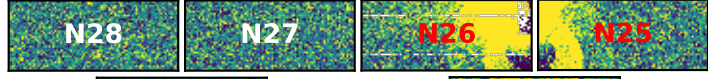
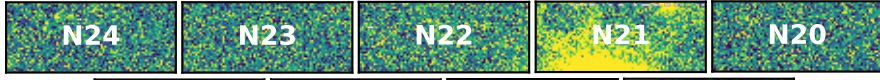
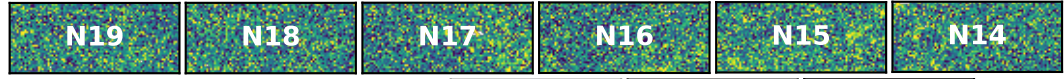
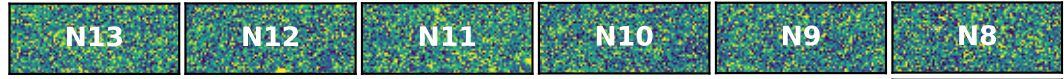
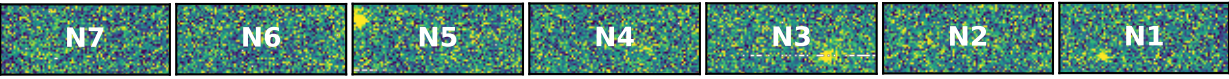
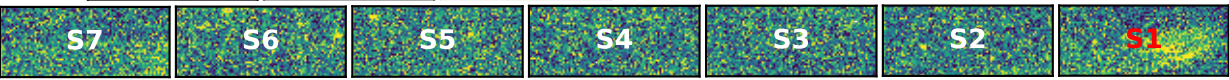
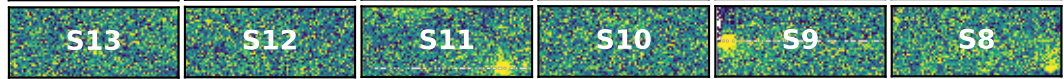
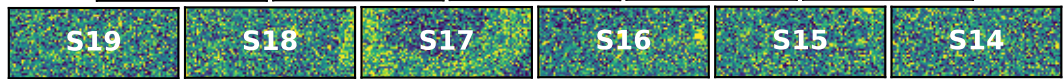
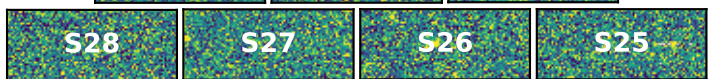


cmin,cmax=1320,1386

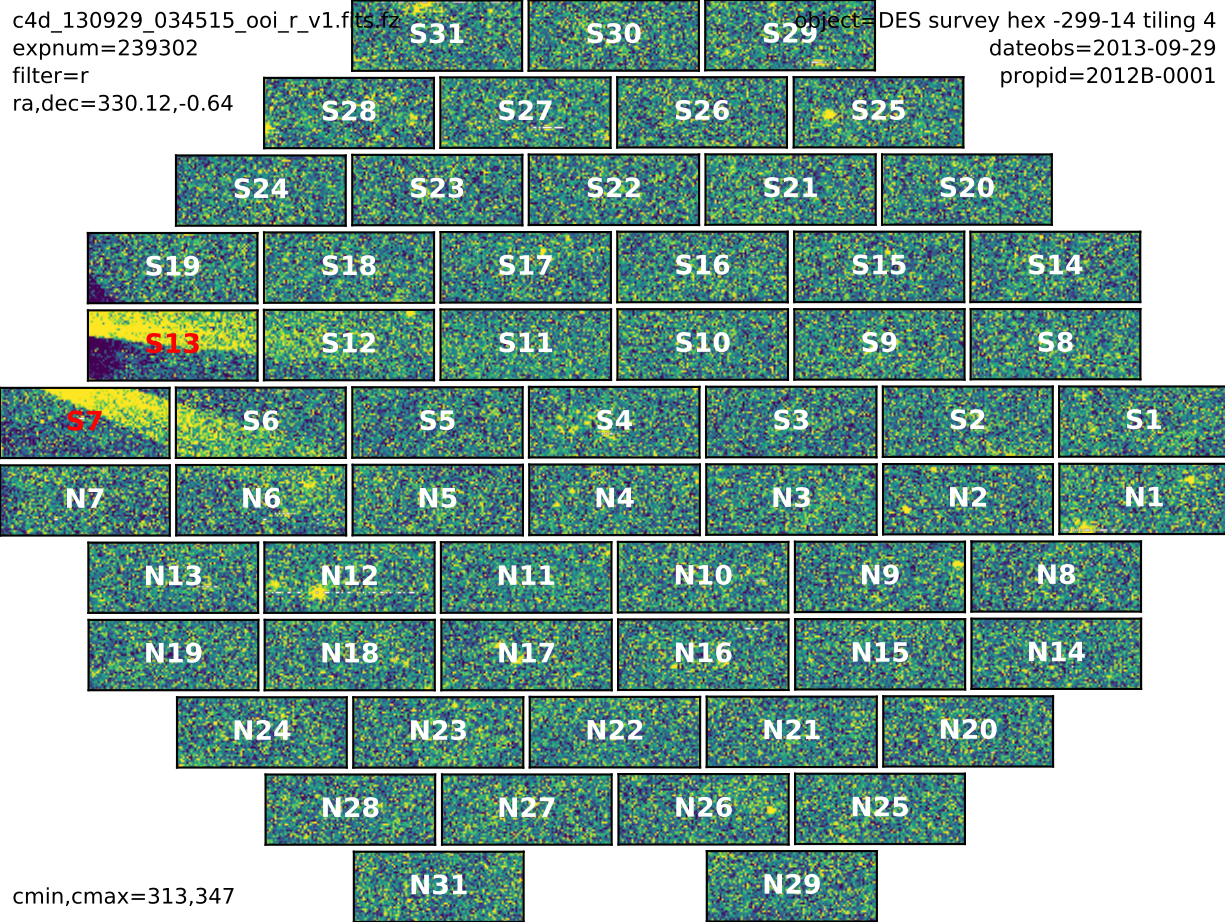
c4d_130929_033113_ooi_r_v1.fits.gz
expnum=239295
filter=r
ra,dec=331.72,0.38

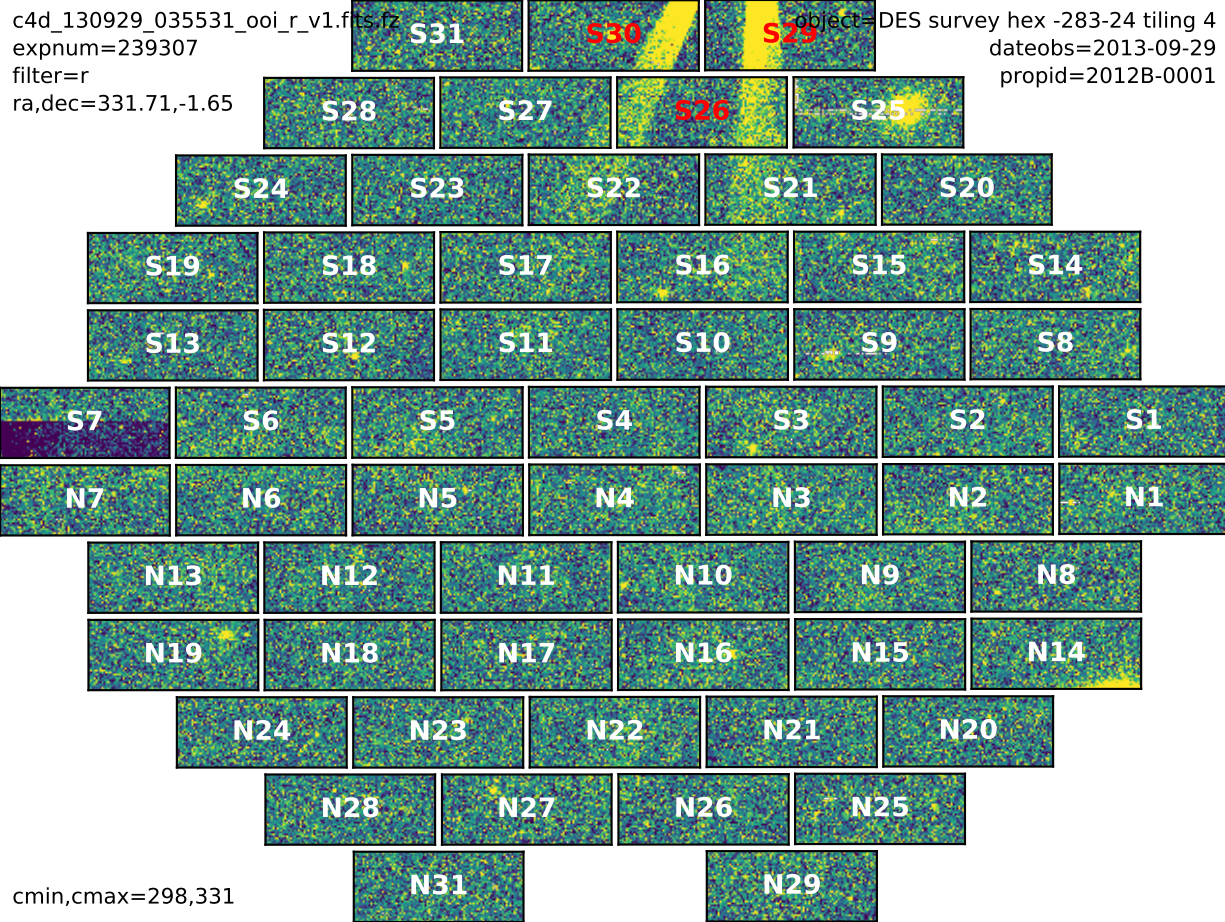


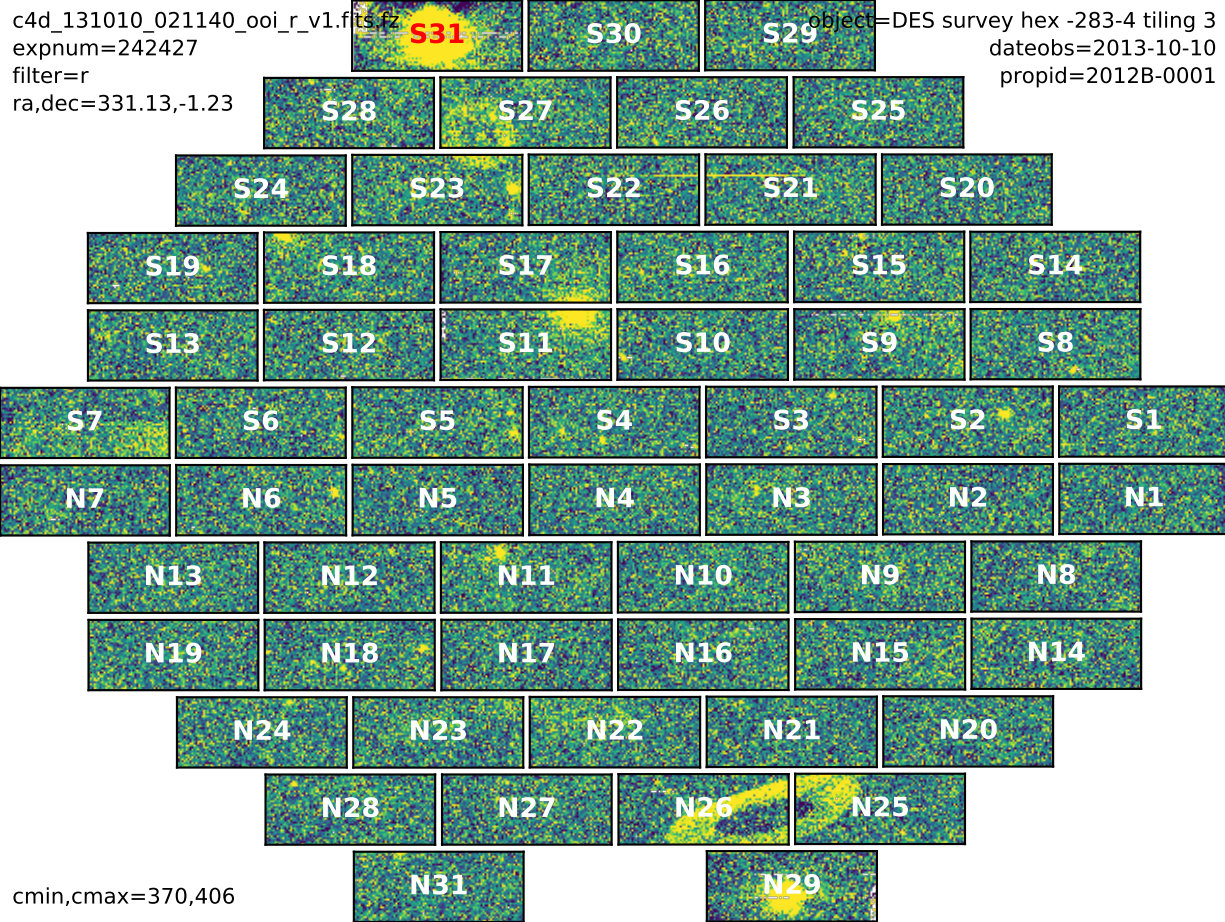
object=DES survey hex -283-4 tiling 4
dateobs=2013-09-29
propid=2012B-0001



cmin,cmax=322,357

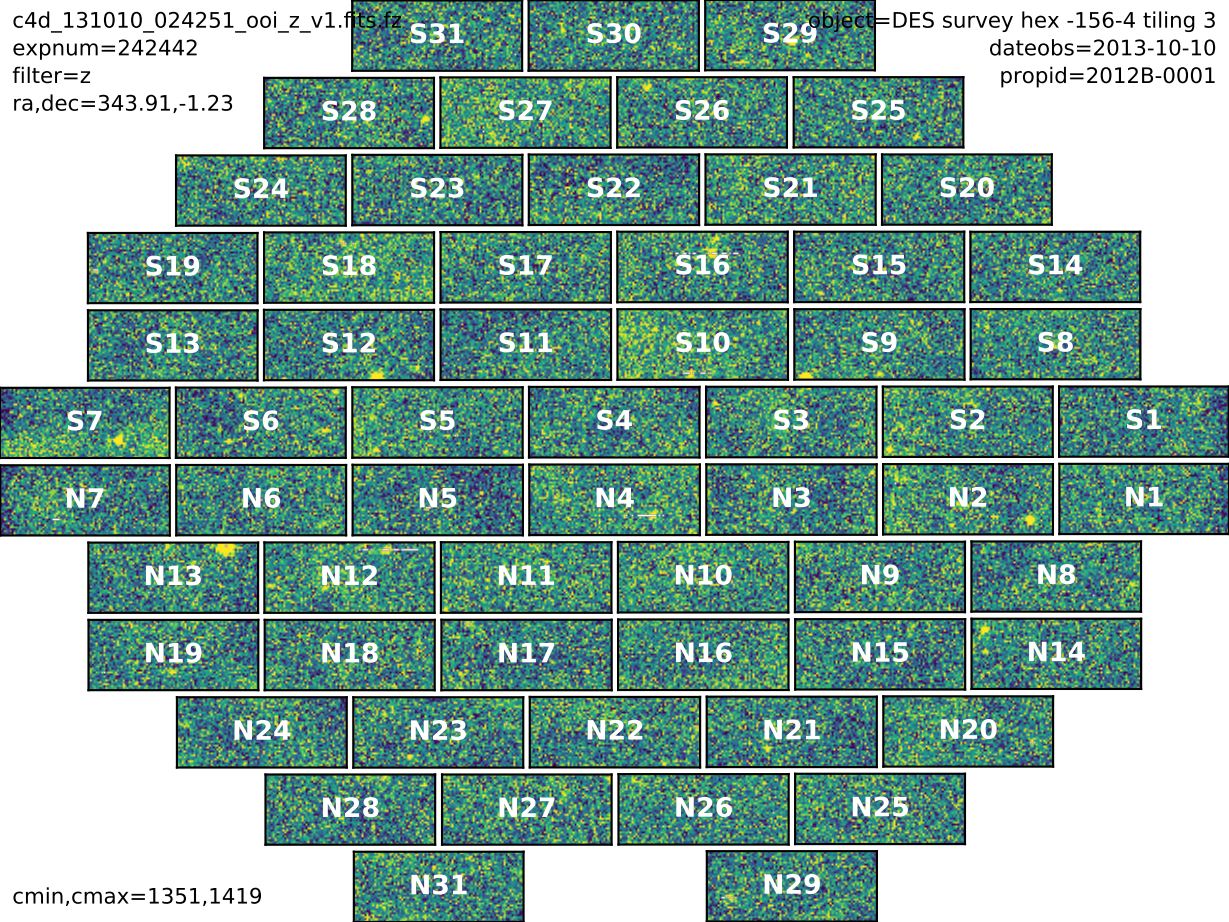




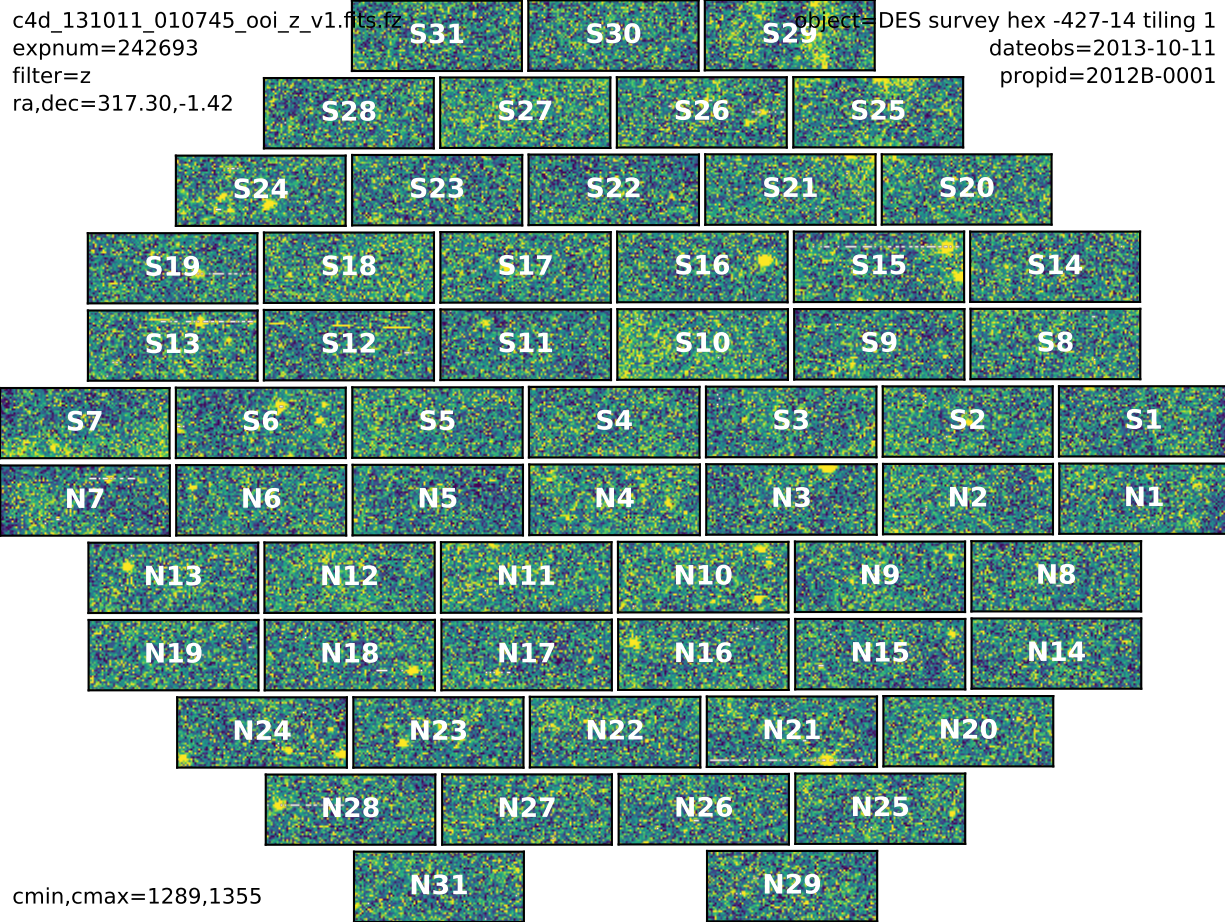


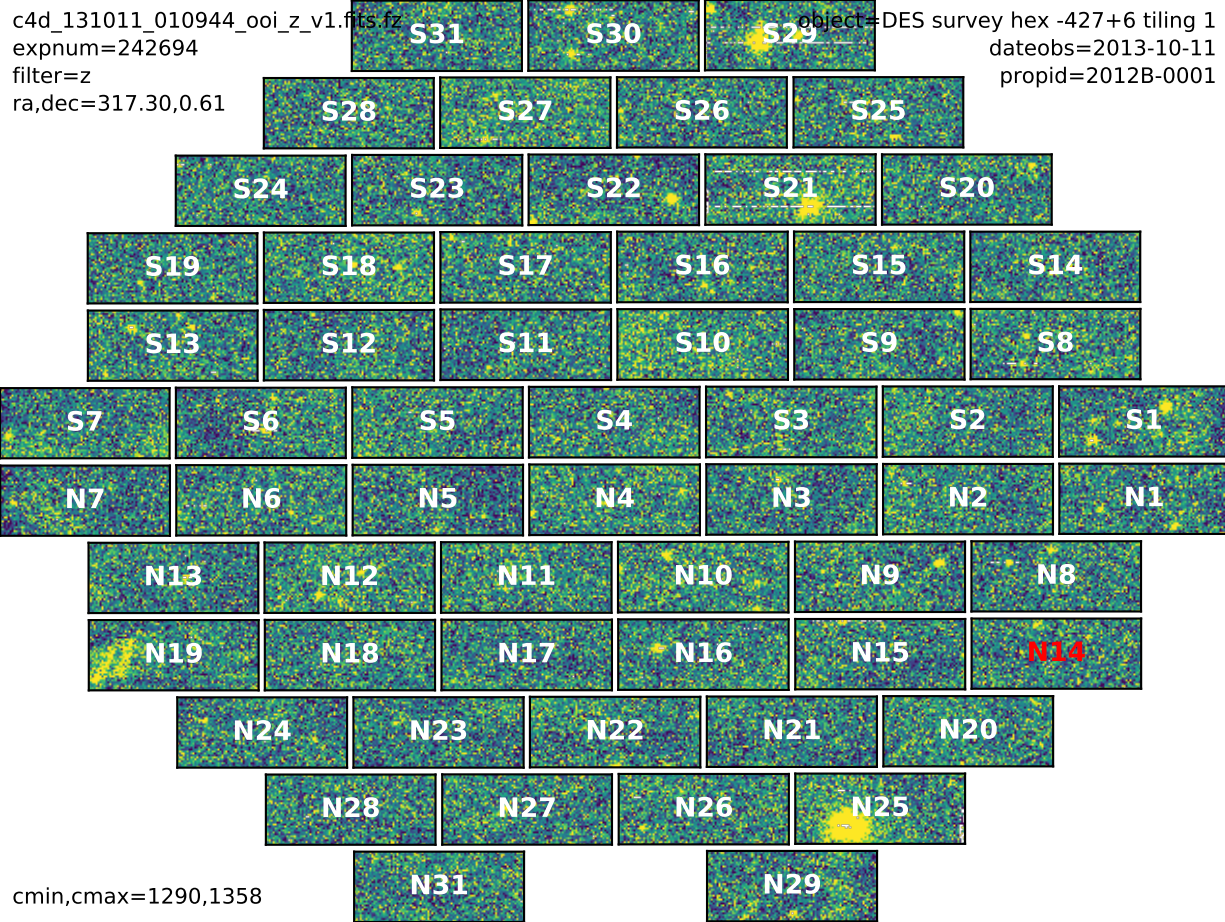
c4d_131010_024251_ooi_z_v1.fits.gz
expnum=242442
filter=z
ra,dec=343.91,-1.23

object=DES survey hex -156-4 tiling 3
dateobs=2013-10-10
propid=2012B-0001



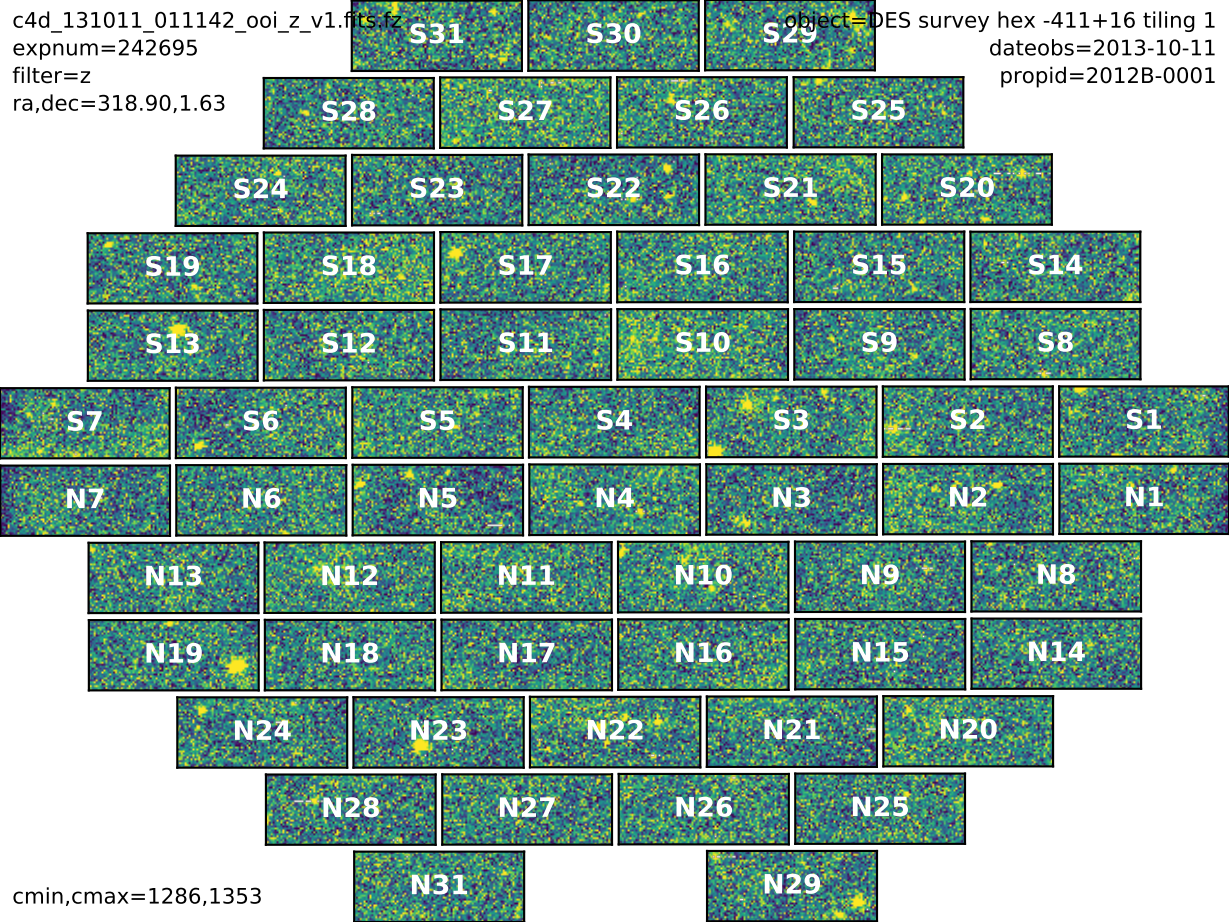
cmin,cmax=1351,1419





c4d_131011_011142_ooi_z_v1.fits.gz
expnum=242695
filter=z
ra,dec=318.90,1.63

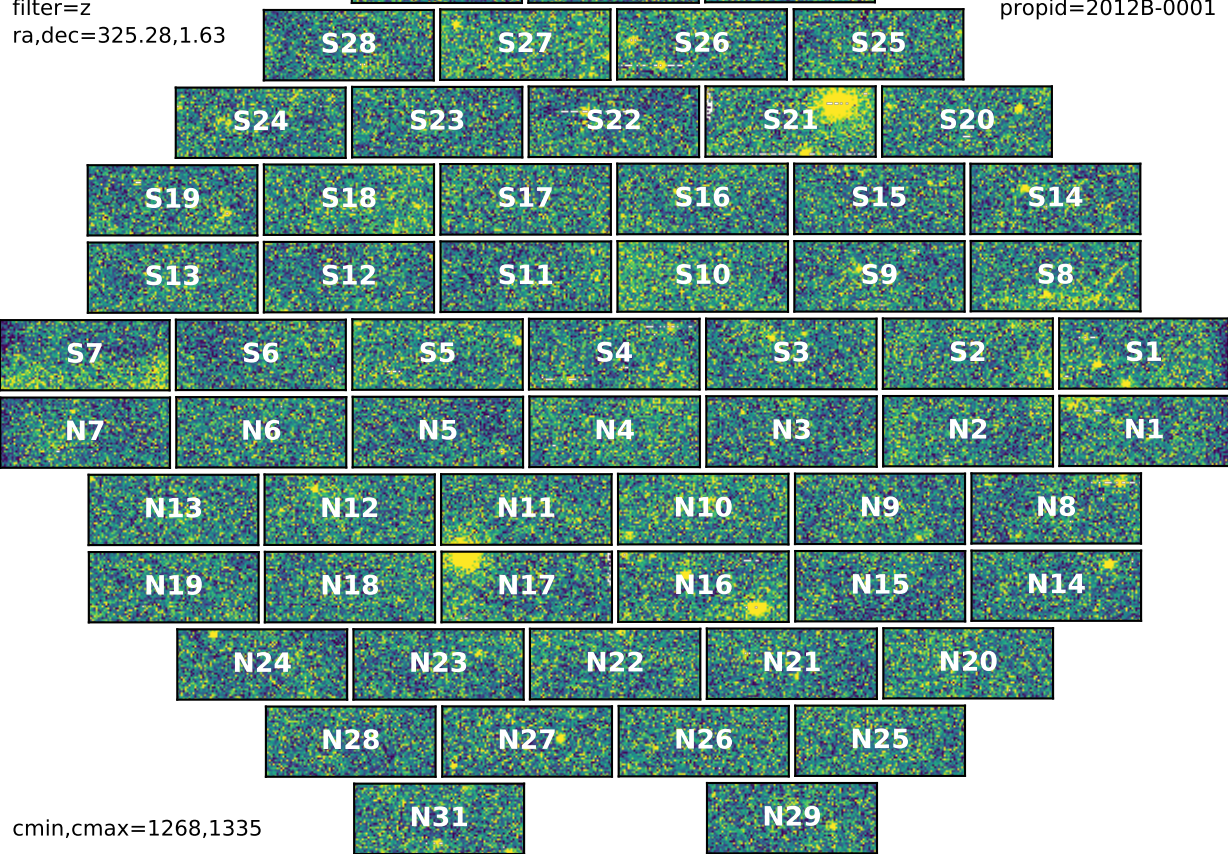
object=DES survey hex -411+16 tiling 1
dateobs=2013-10-11
propid=2012B-0001



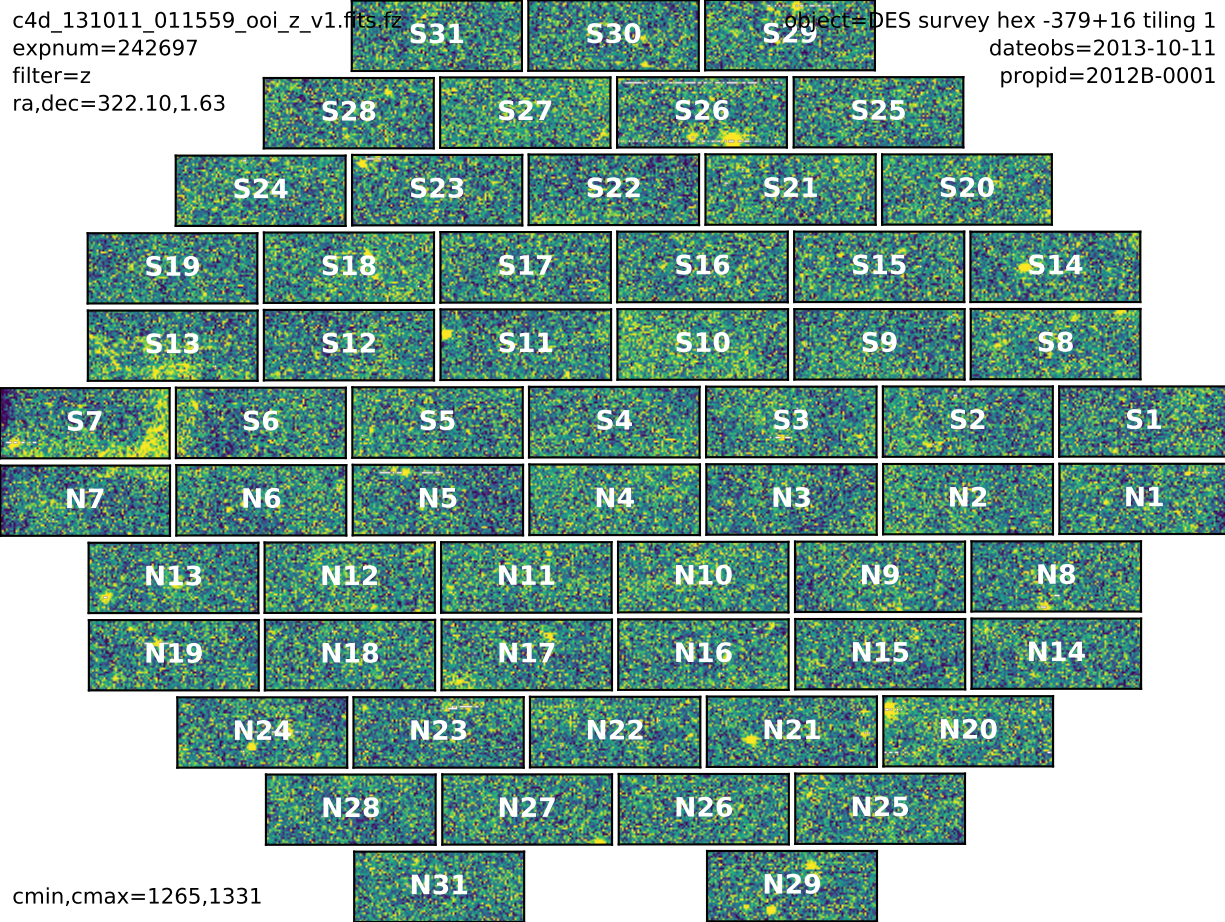
cmin,cmax=1286,1353

c4d_131011_011359_ooi_z_v1.fits.gz
expnum=242696
filter=z
ra,dec=325.28,1.63

object=DES survey hex -347+16 tiling 1
dateobs=2013-10-11
propid=2012B-0001

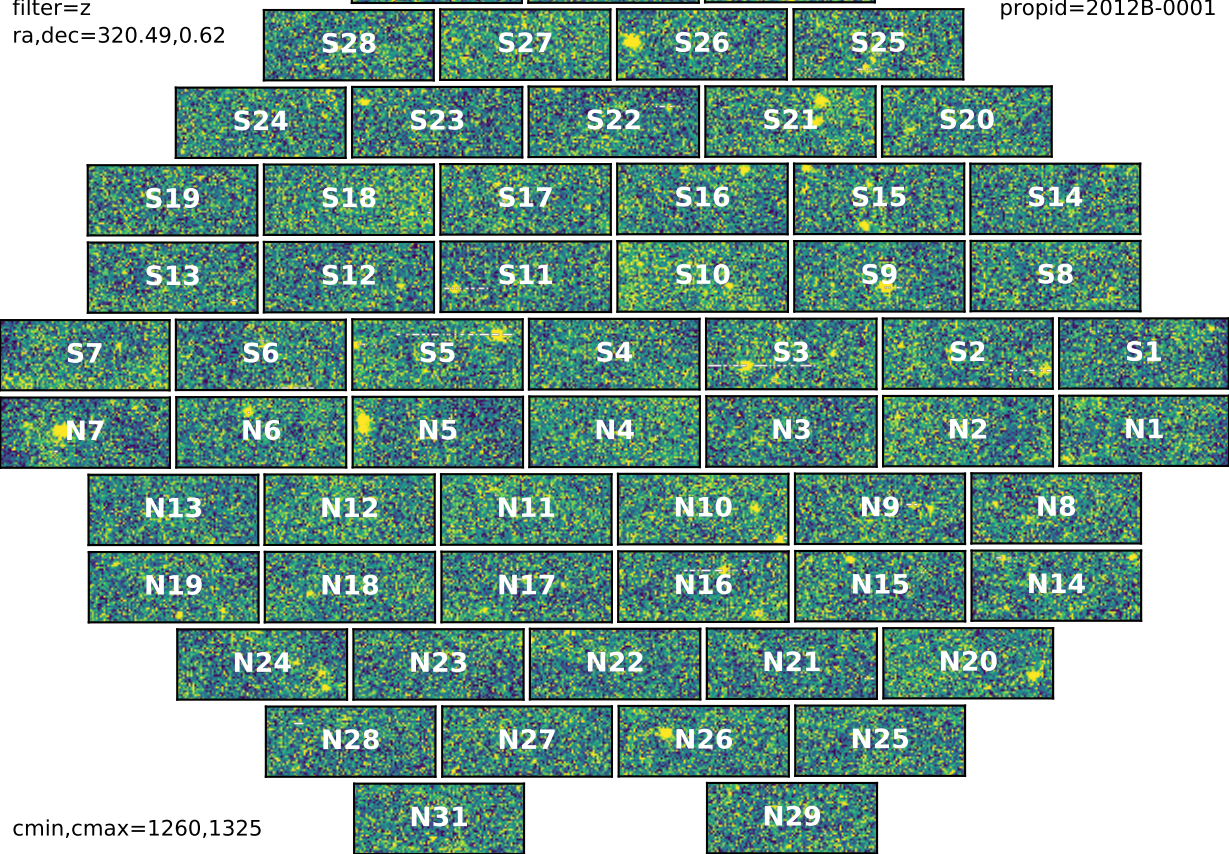


cmin,cmax=1268,1335

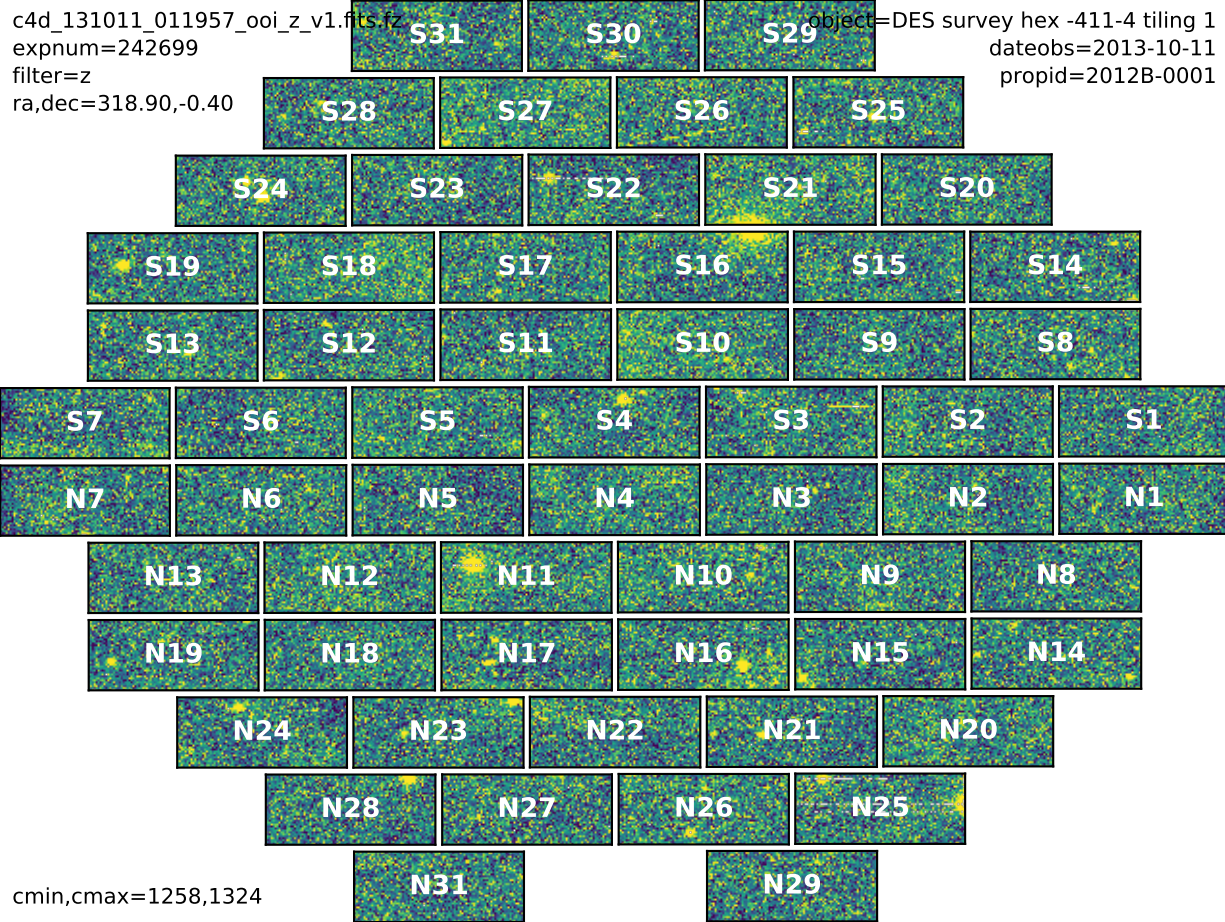


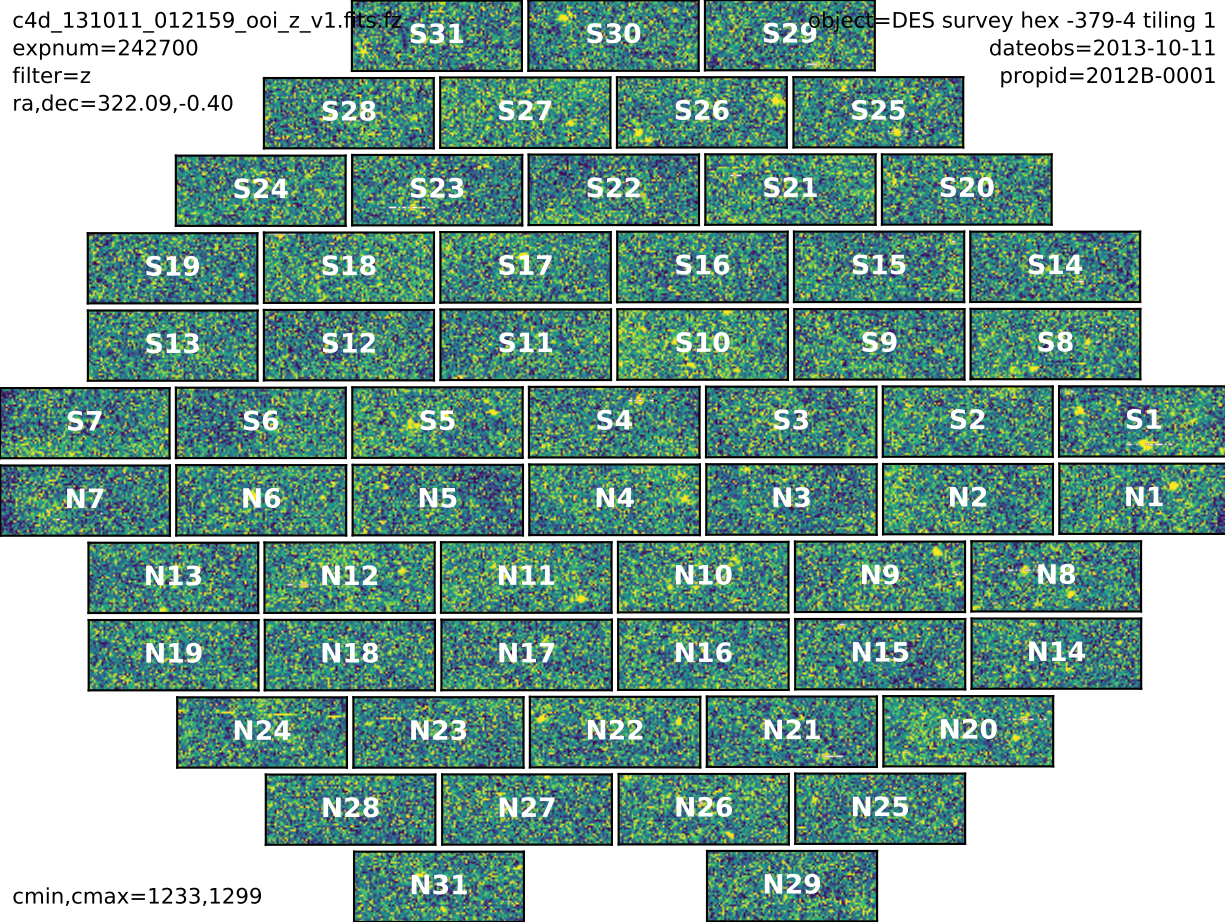
c4d_131011_011758_ooi_z_v1.fits.gz
expnum=242698
filter=z
ra,dec=320.49,0.62

object=DES survey hex -395+6 tiling 1
dateobs=2013-10-11
propid=2012B-0001



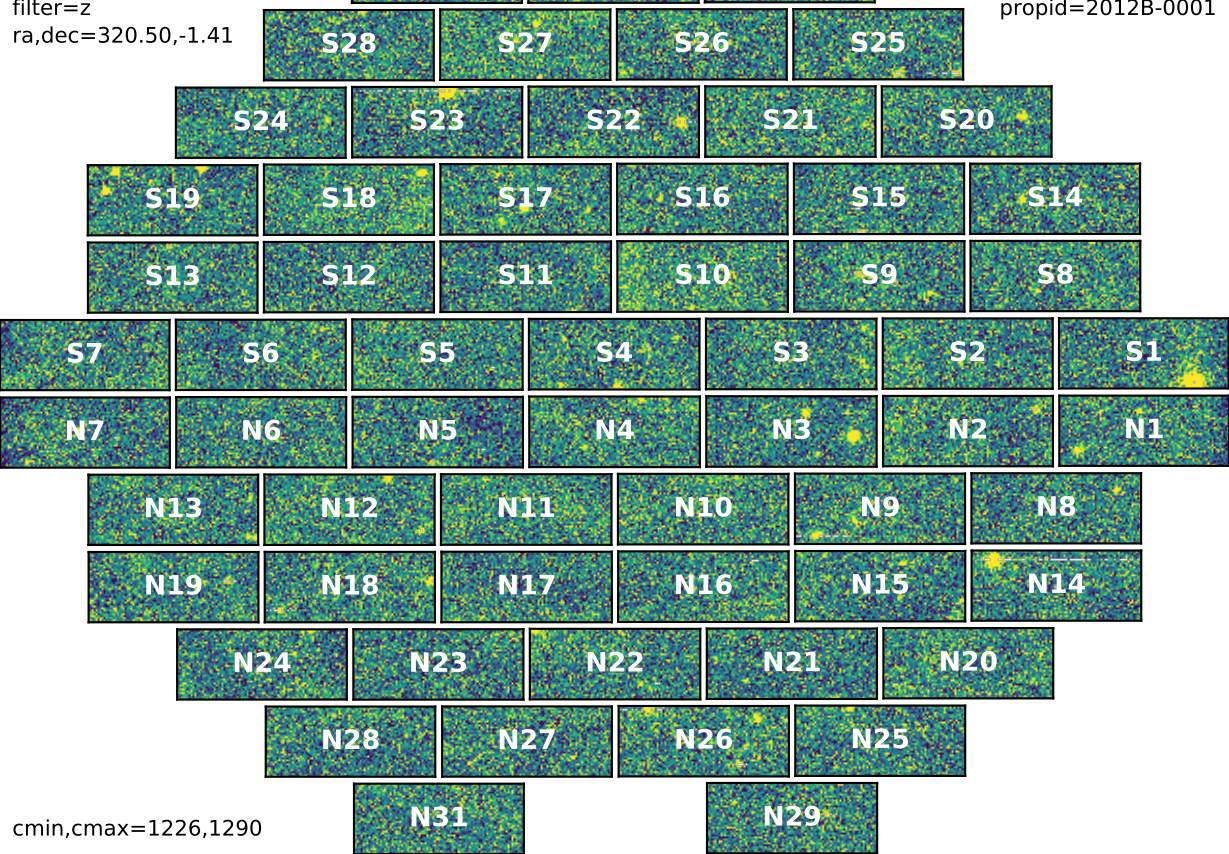
cmin,cmax=1260,1325



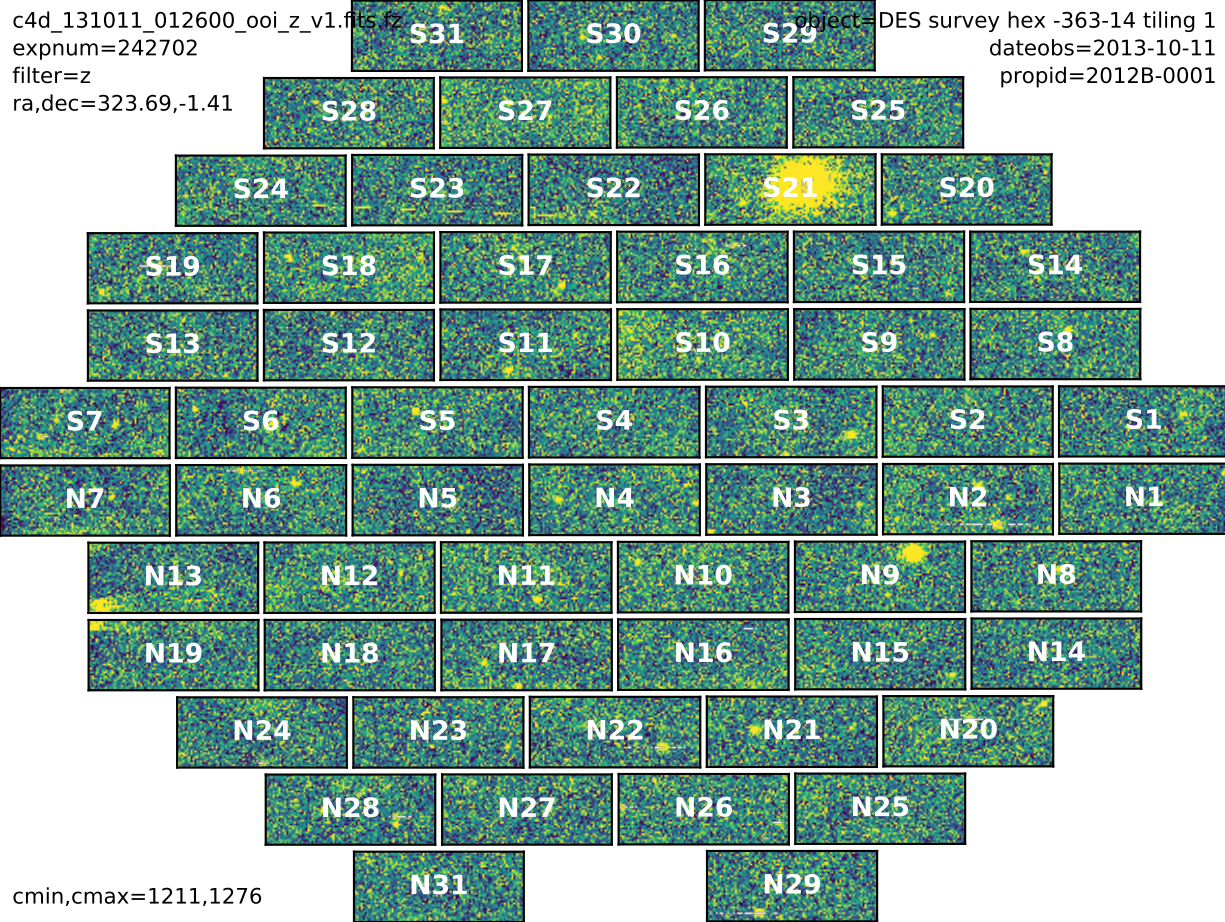


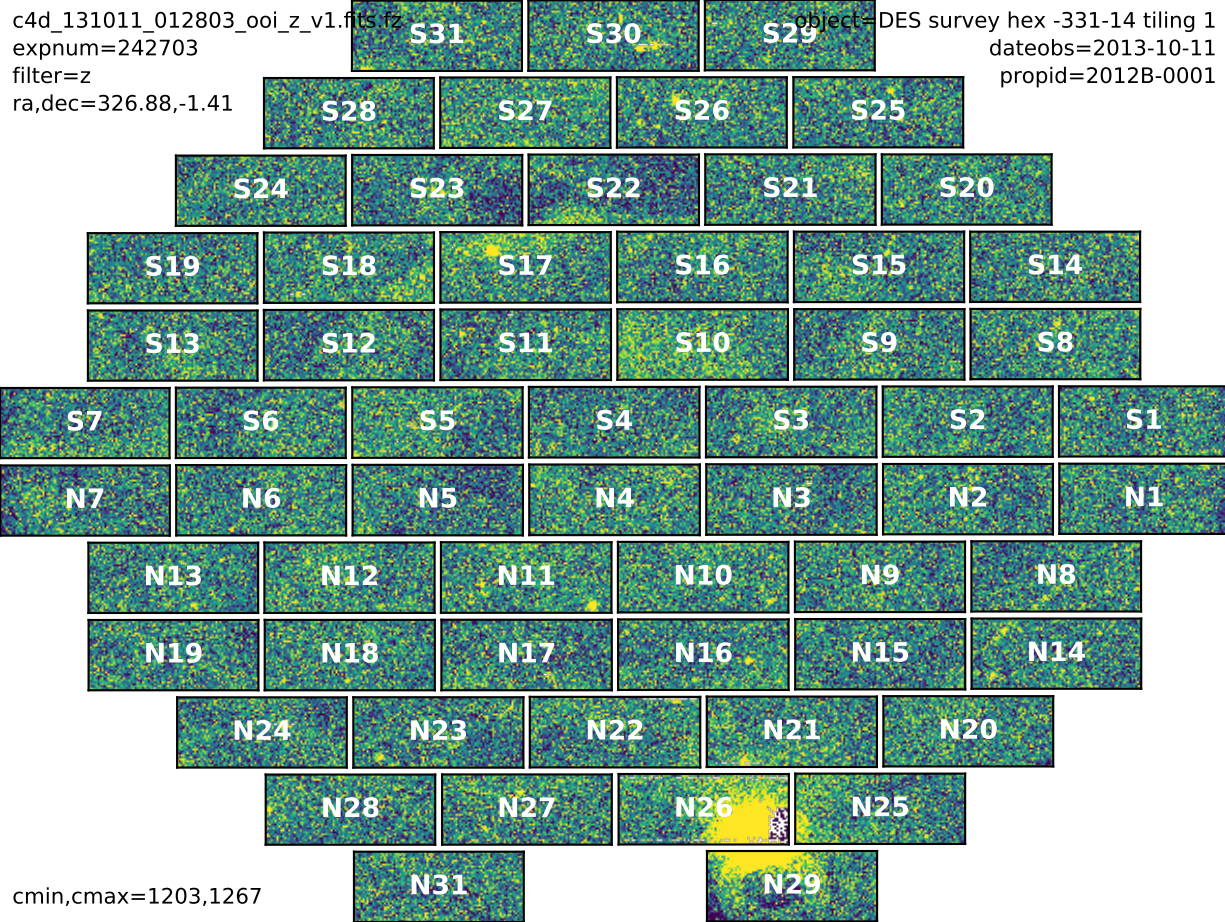
c4d_131011_012357_ooi_z_v1.fits.gz
expnum=242701
filter=z
ra,dec=320.50,-1.41

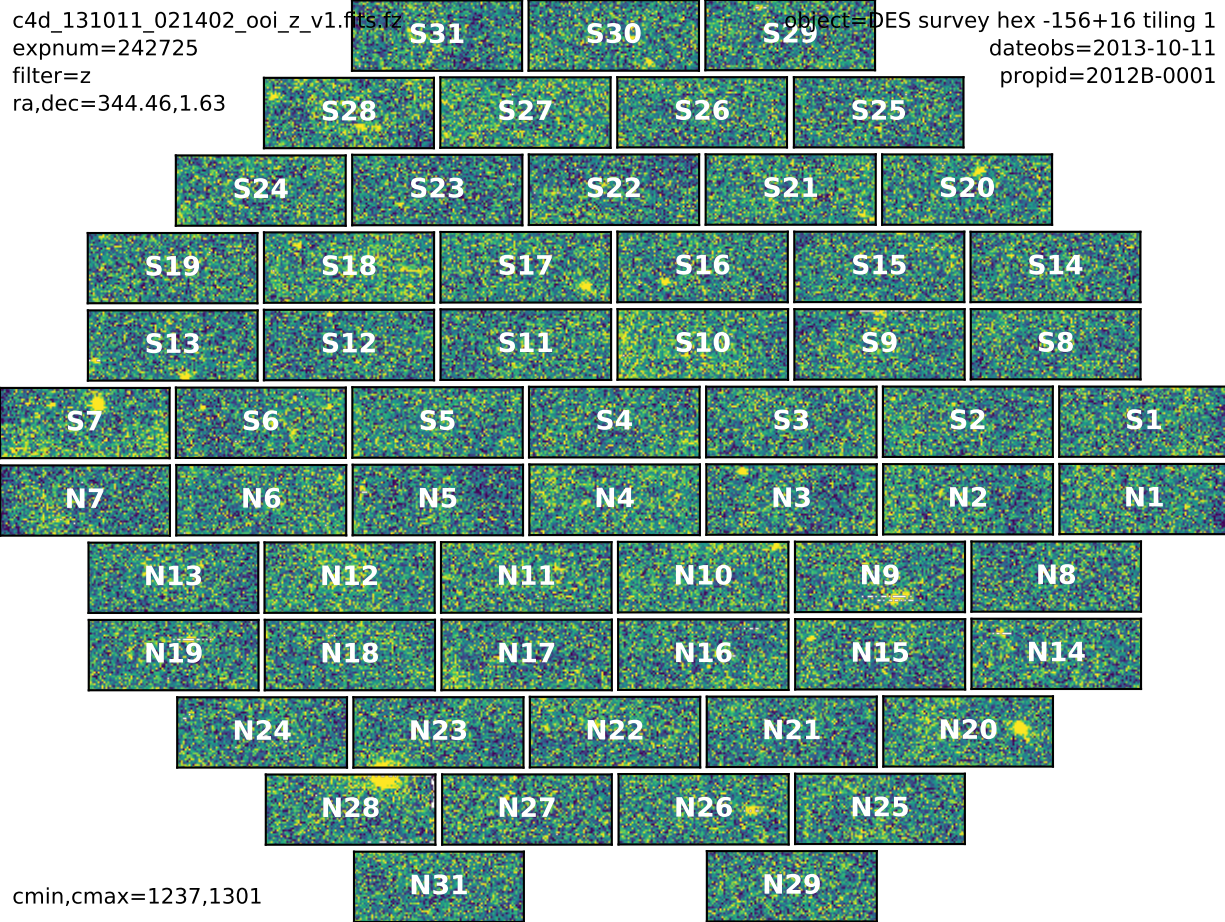
object=DES survey hex -395-14 tiling 1
dateobs=2013-10-11
propid=2012B-0001



cmin,cmax=1226,1290

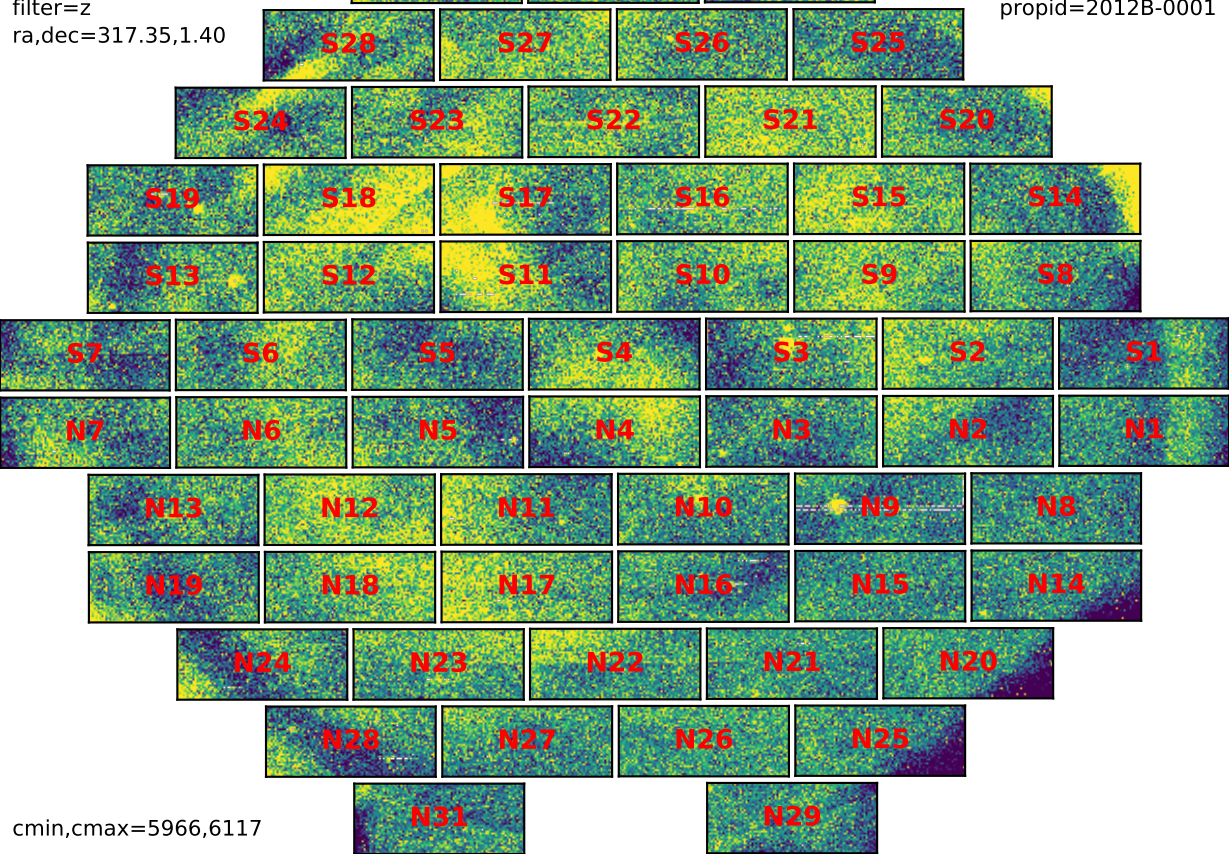






c4d_131012_235359_ooi_z_v1.fits.gz
expnum=243431
filter=z
ra,dec=317.35,1.40

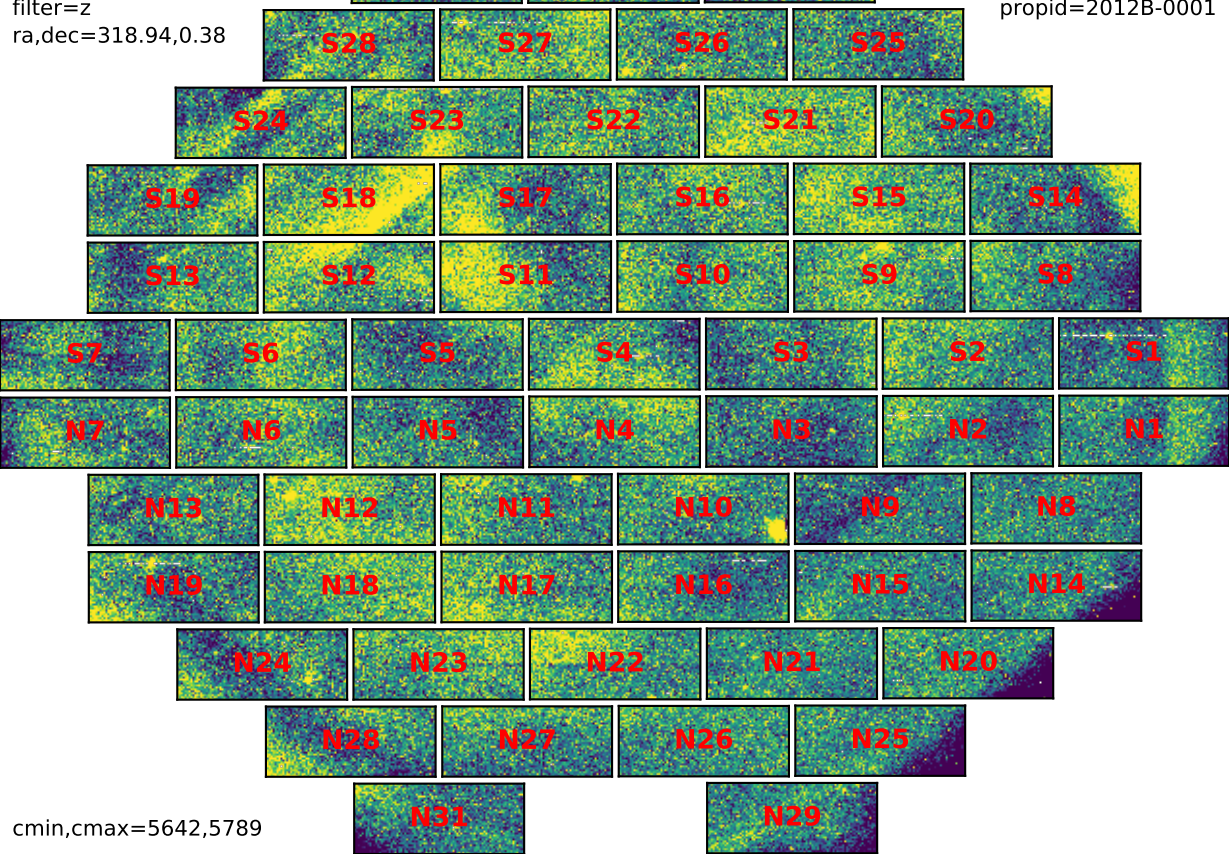
object=DES survey hex -427+6 tiling 4
dateobs=2013-10-12
propid=2012B-0001



cmin,cmax=5966,6117

c4d_131012_235804_ooi_z_v1.fits.gz
expnum=243433
filter=z
ra,dec=318.94,0.38

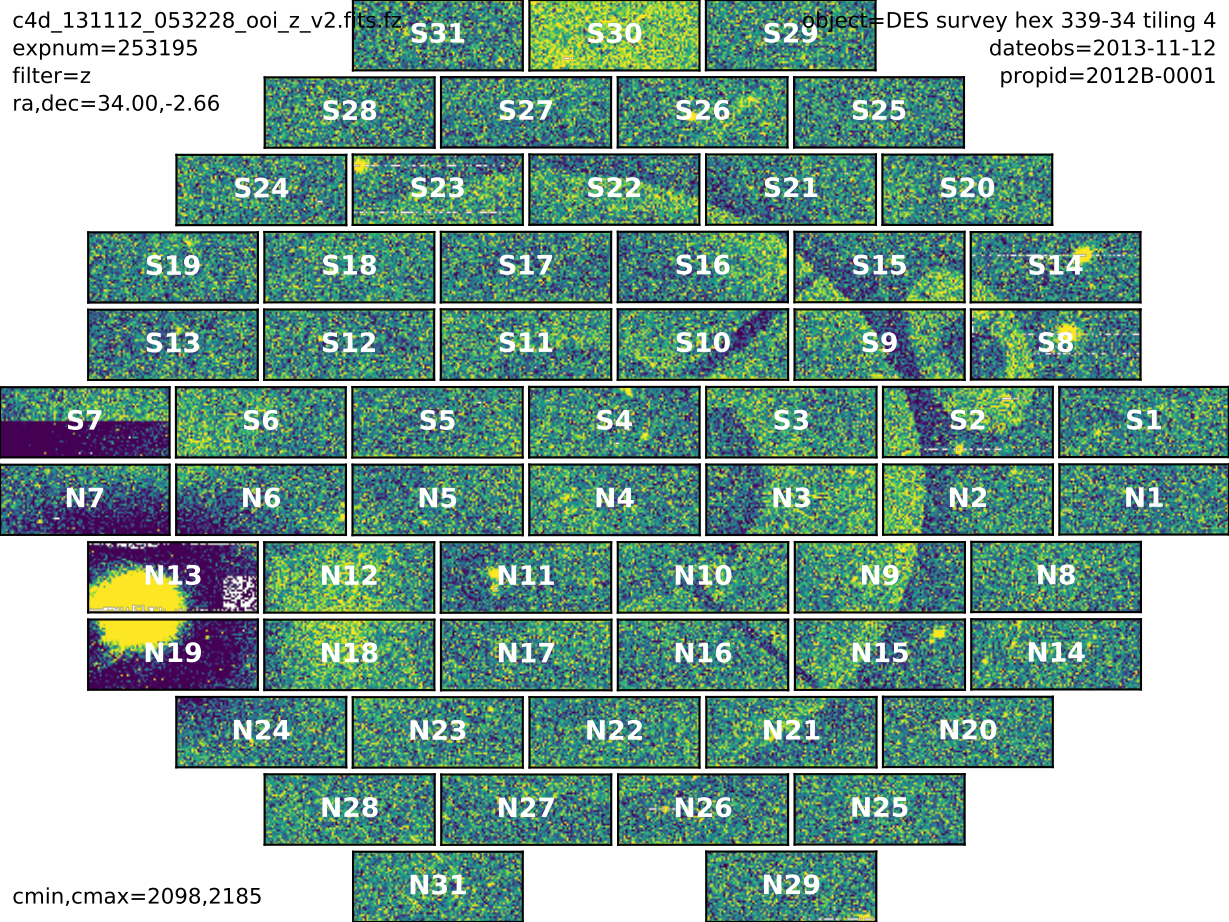
object=DES survey hex -411-4 tiling 4
dateobs=2013-10-12
propid=2012B-0001



cmin,cmax=5642,5789

c4d_131112_053228_ooi_z_v2.fits
expnum=253195
filter=z
ra,dec=34.00,-2.66

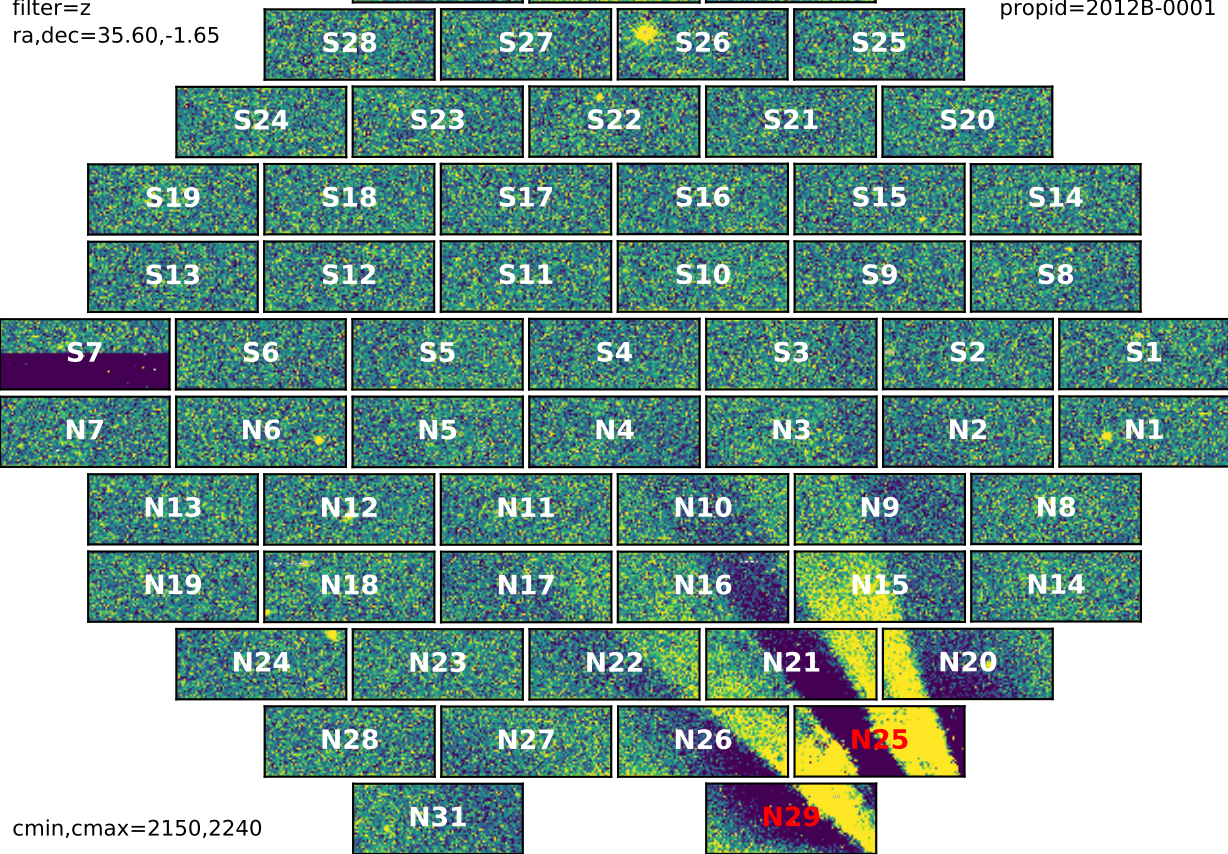
object=DES survey hex 339-34 tiling 4
dateobs=2013-11-12
propid=2012B-0001



cmin,cmax=2098,2185

c4d_131112_053429_ooi_z_v2.fits.gz
expnum=253196
filter=z
ra,dec=35.60,-1.65

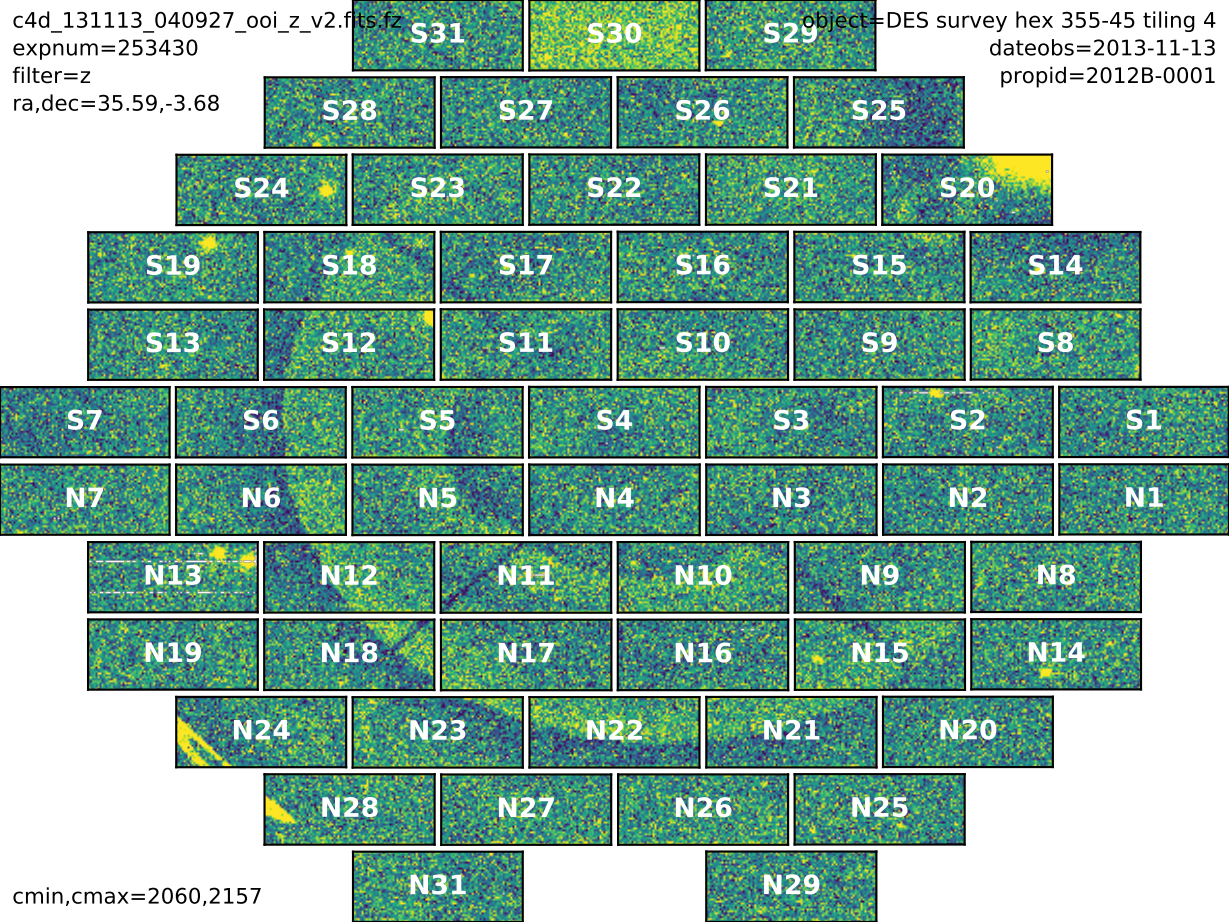
object=DES survey hex 356-24 tiling 4
dateobs=2013-11-12
propid=2012B-0001



cmin,cmax=2150,2240

c4d_131113_040927_ooi_z_v2.fits.gz
expnum=253430
filter=z
ra,dec=35.59,-3.68

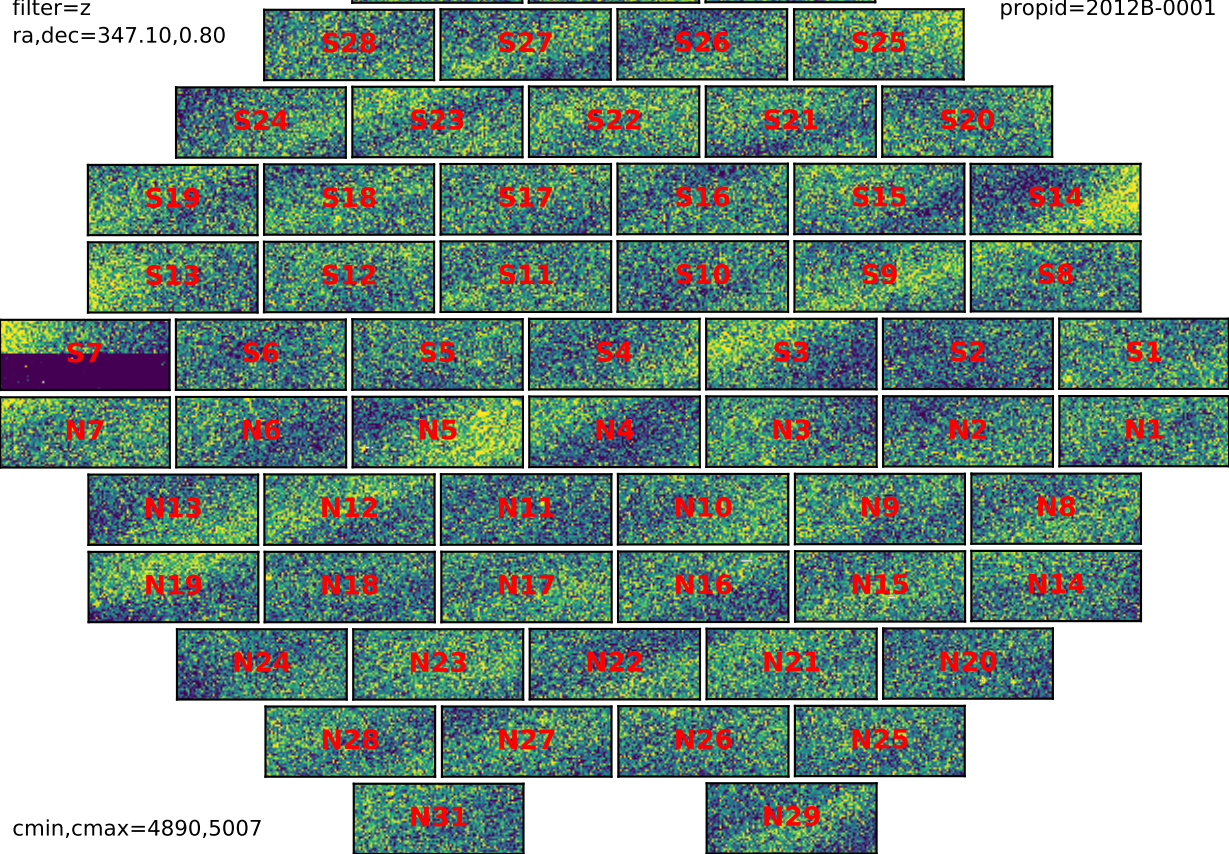
object=DES survey hex 355-45 tiling 4
dateobs=2013-11-13
propid=2012B-0001



cmin,cmax=2060,2157

c4d_131118_021608_ooi_z_a1.fits.gz
expnum=255460
filter=z
ra,dec=347.10,0.80

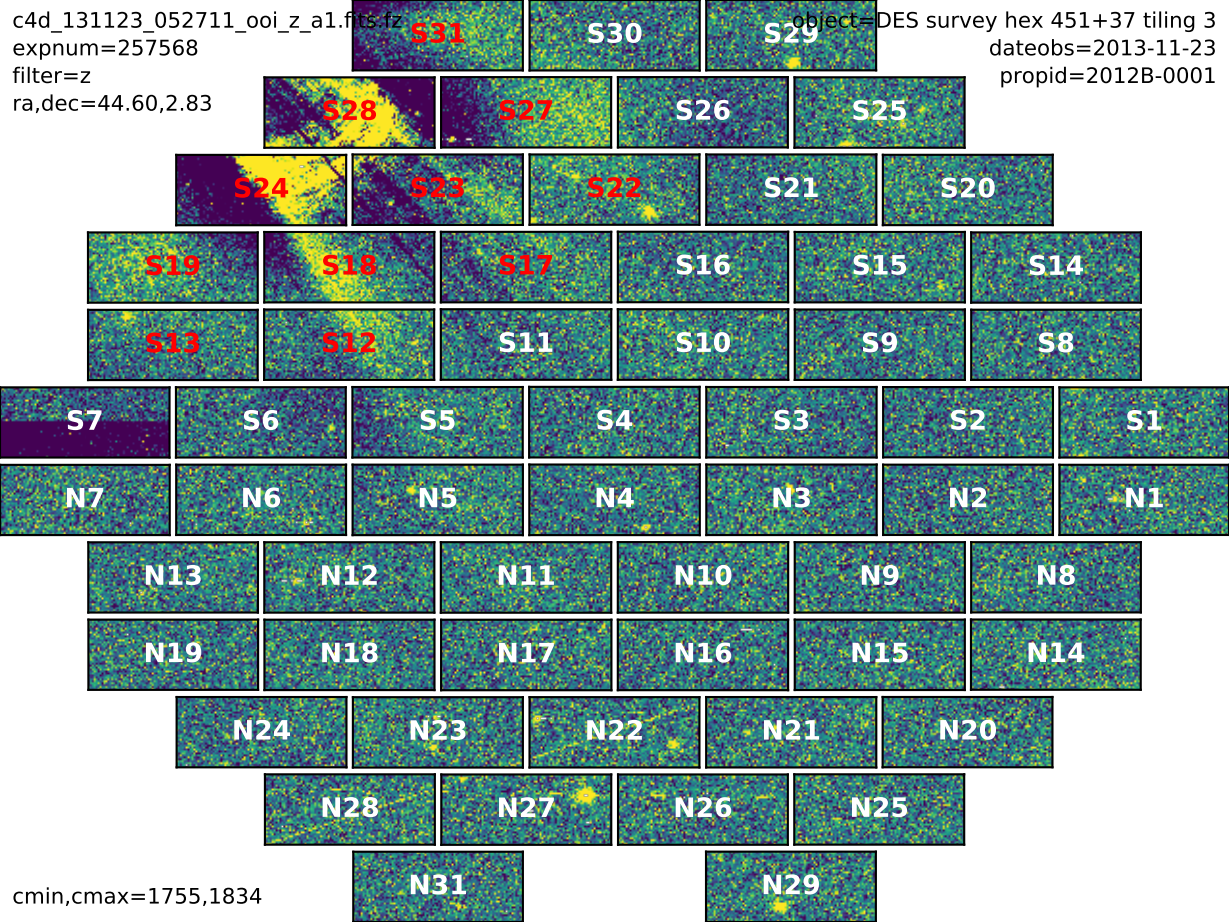
object=DES survey hex -124+16 tiling 3
dateobs=2013-11-18
propid=2012B-0001



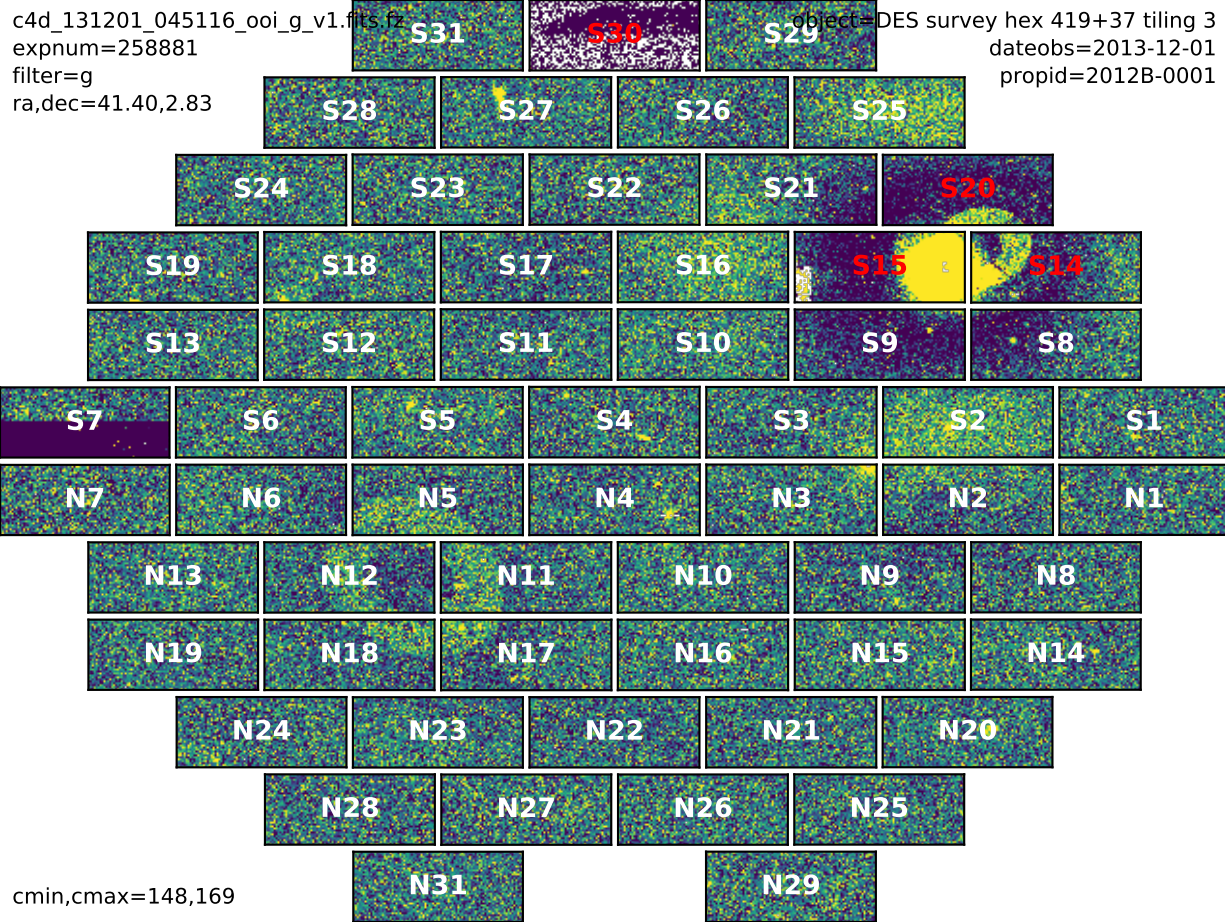
cmin,cmax=4890,5007

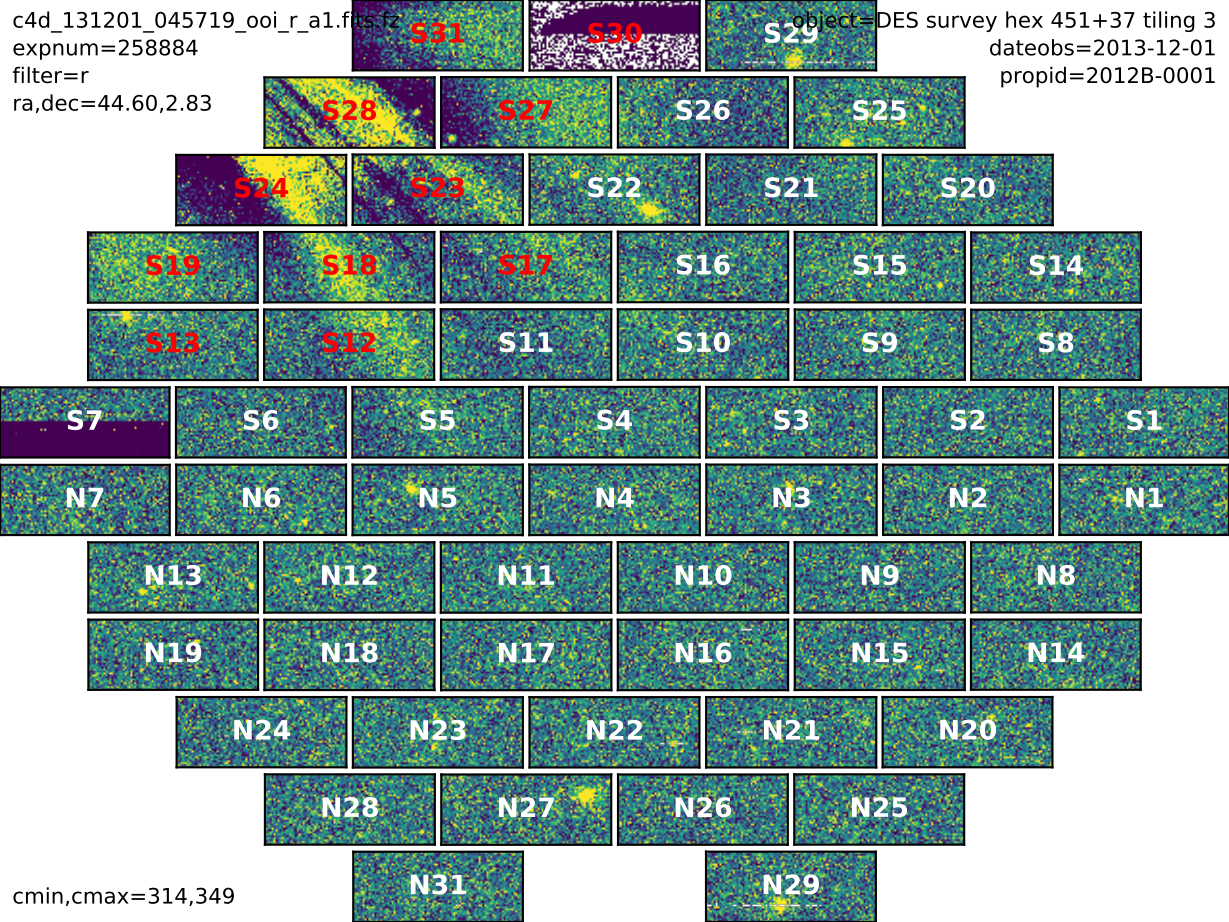
c4d_131123_052711_ooi_z_a1.fits.gz
expnum=257568
filter=z
ra,dec=44.60,2.83

object=DES survey hex 451+37 tiling 3
dateobs=2013-11-23
propid=2012B-0001



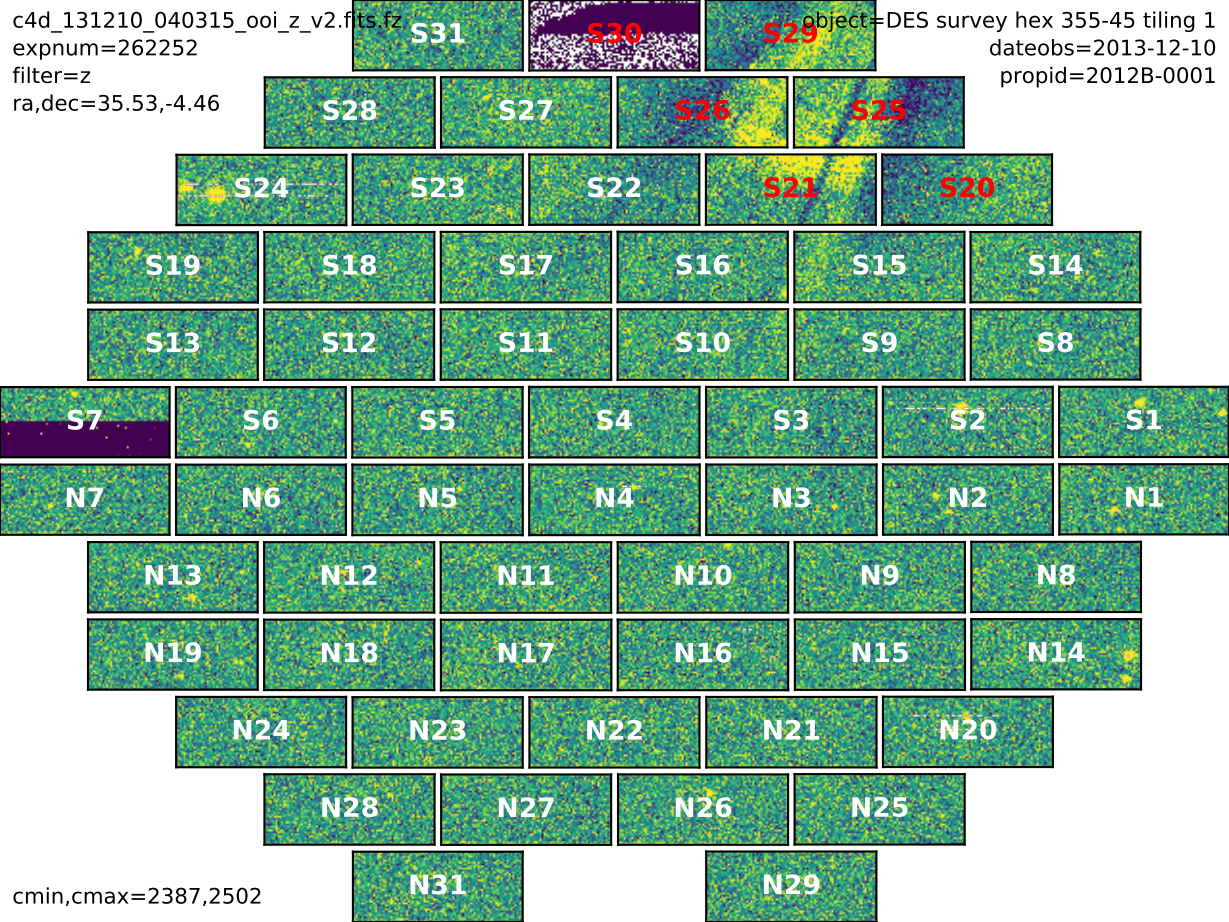
cmin,cmax=1755,1834





c4d_131210_040315_ooi_z_v2.fits.gz
expnum=262252
filter=z
ra,dec=35.53,-4.46

object=DES survey hex 355-45 tiling 1
dateobs=2013-12-10
propid=2012B-0001

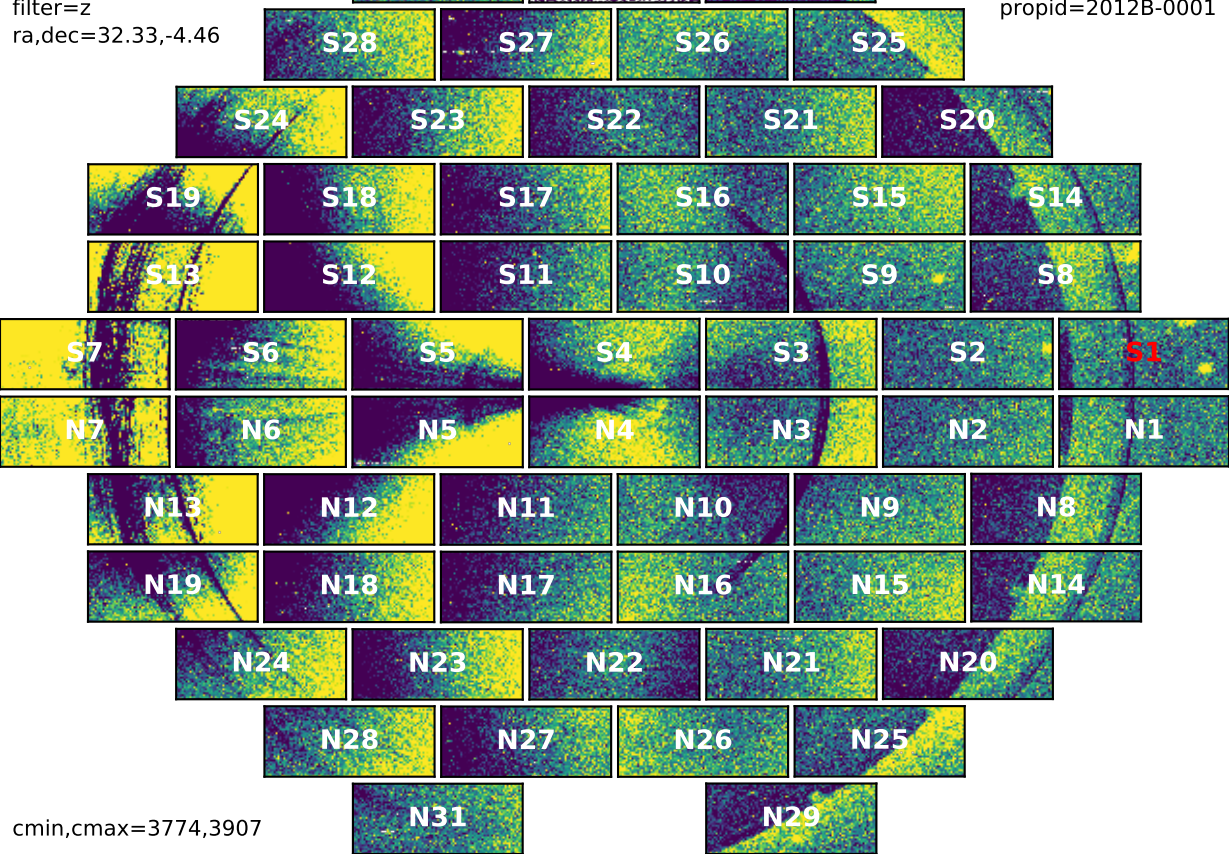


cmin,cmax=2387,2502

c4d_131211_040530_ooi_z_v2.fits
expnum=262573
filter=z
ra,dec=32.33,-4.46

S31
S30
S29

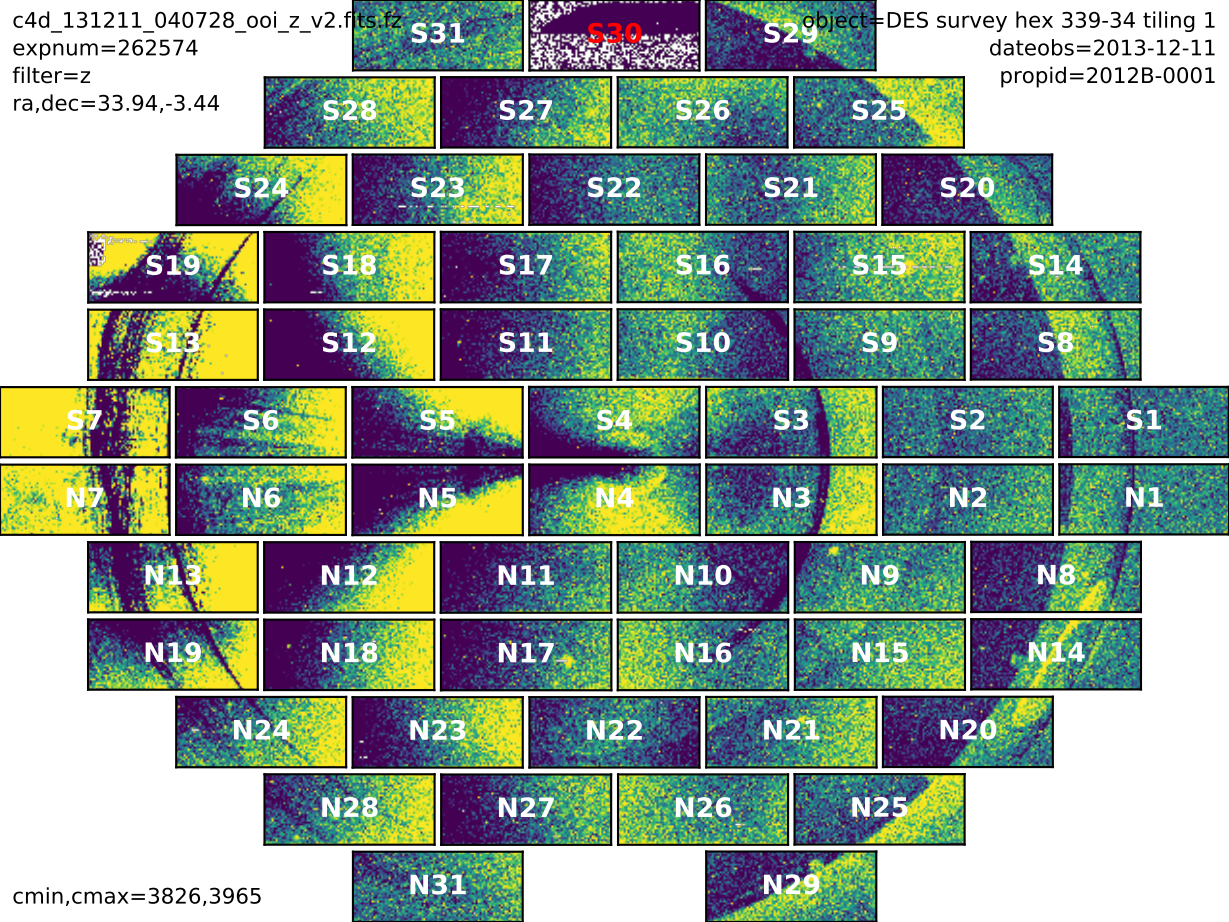
object=DES survey hex 323-45 tiling 1
dateobs=2013-12-11
propid=2012B-0001



cmin,cmax=3774,3907

c4d_131211_040728_ooi_z_v2.fits.gz
expnum=262574
filter=z
ra,dec=33.94,-3.44

object=DES survey hex 339-34 tiling 1
dateobs=2013-12-11
propid=2012B-0001



cmin,cmax=3826,3965

c4d_131211_040947_ooi_z_v2.fits
expnum=262575
filter=z
ra,dec=35.55,-2.43

S31

S30

S29

object=DES survey hex 356-24 tiling 1
dateobs=2013-12-11
propid=2012B-0001

S28

S27

S26

S25

S24

S23

S22

S21

S20

S19

S18

S17

S16

S15

S14

S13

S12

S11

S10

S9

S8

S7

S6

S5

S4

S3

S2

S1

N7

N6

N5

N4

N3

N2

N1

N13

N12

N11

N10

N9

N8

N19

N18

N17

N16

N15

N14

N24

N23

N22

N21

N20

N28

N27

N26

N25

N31

N29

cmin,cmax=3043,3156

c4d_131211_041144_ooi_z_v2.fits
expnum=262576
filter=z
ra,dec=37.16,-1.41

fts.fz

S31

S30

S29

object=DES survey hex 372-14 tiling 1
dateobs=2013-12-11
propid=2012B-0001

S28

S27

S26

S25

S24

S23

S22

S21

S20

S19

S18

S17

S16

S15

S14

S13

S12

S11

S10

S9

S8

S7

S6

S5

S4

S3

S2

S1

N7

N6

N5

N4

N3

N2

N1

N13

N12

N11

N10

N9

N8

N19

N18

N17

N16

N15

N14

N24

N23

N22

N21

N20

N28

N27

N26

N25

N31

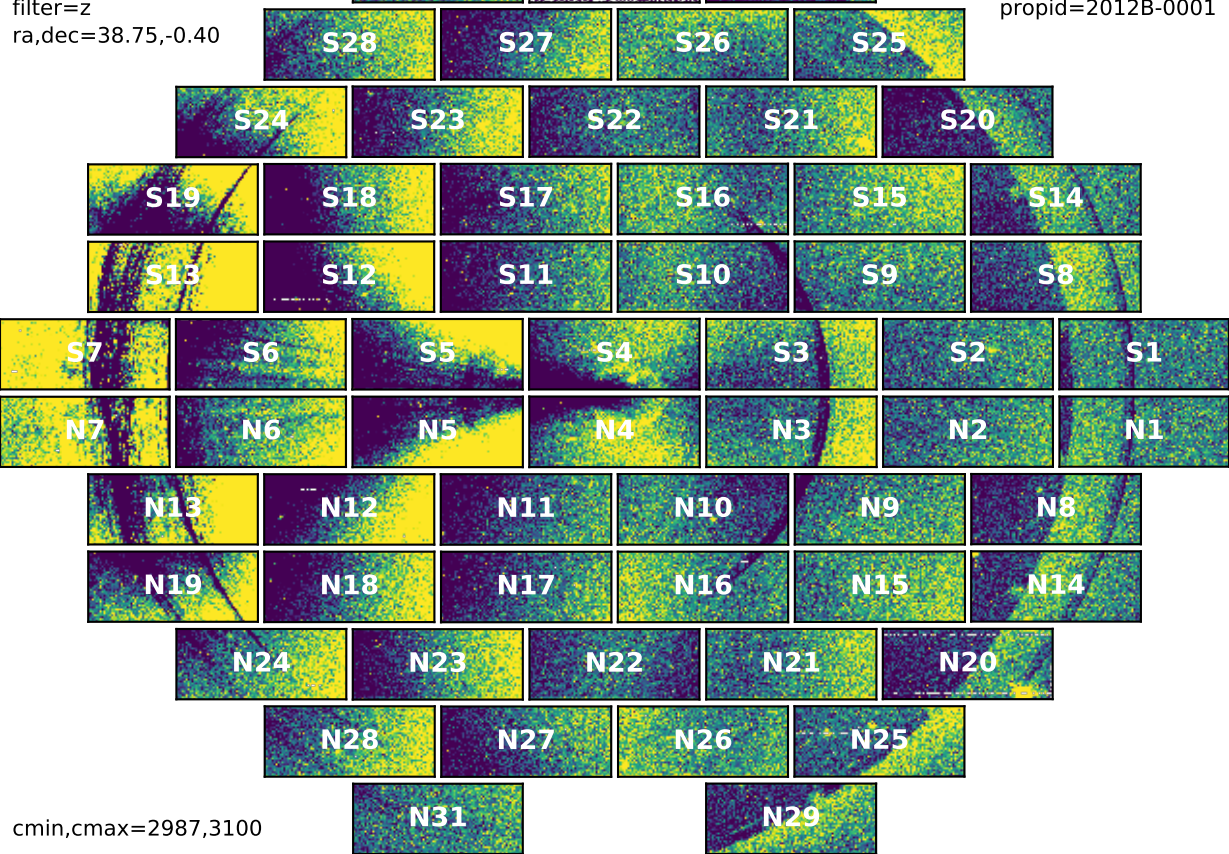
N29

cmin,cmax=3033,3148

c4d_131211_041345_ooi_z_v2.fits.gz
expnum=262577
filter=z
ra,dec=38.75,-0.40



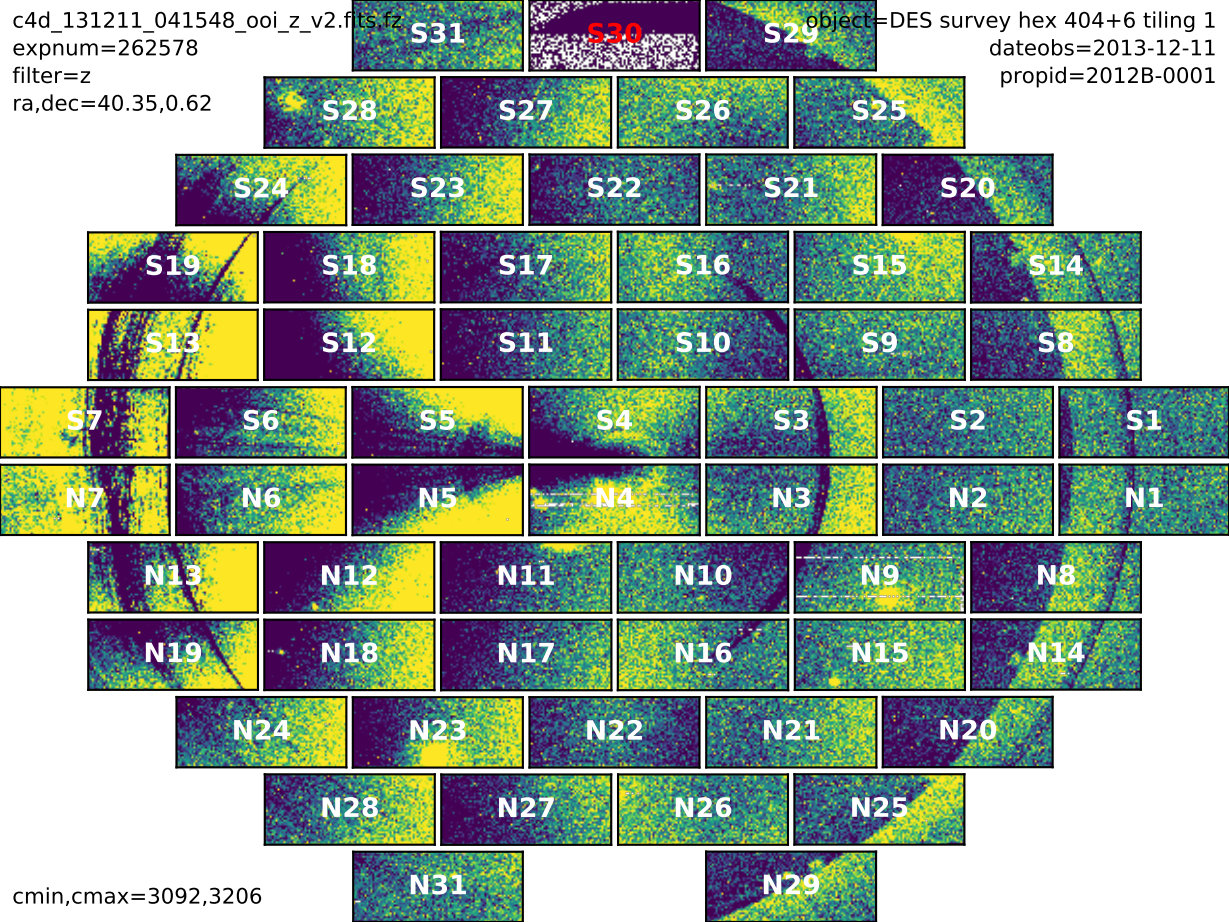
object=DES survey hex 388-4 tiling 1
dateobs=2013-12-11
propid=2012B-0001



cmin,cmax=2987,3100

c4d_131211_041548_ooi_z_v2.fits.gz
expnum=262578
filter=z
ra,dec=40.35,0.62

object=DES survey hex 404+6 tiling 1
dateobs=2013-12-11
propid=2012B-0001

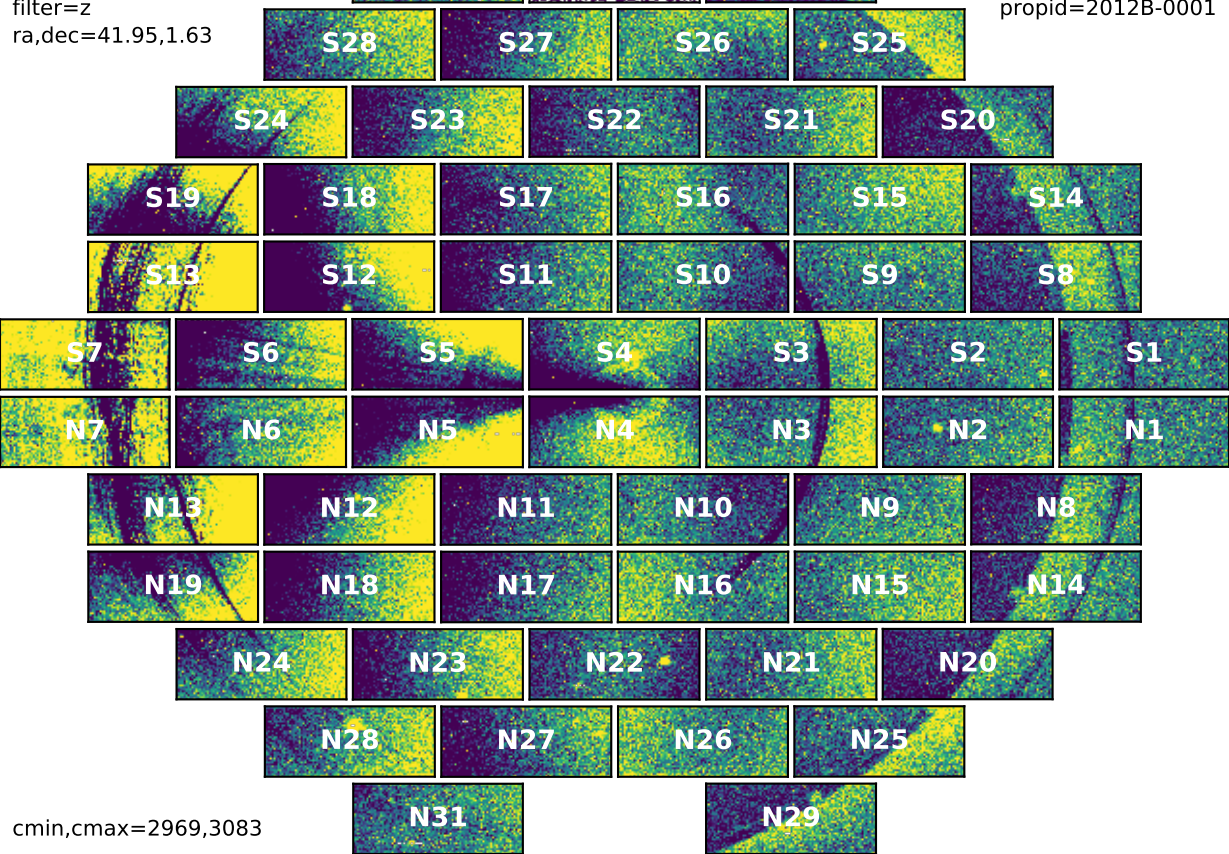


cmin,cmax=3092,3206

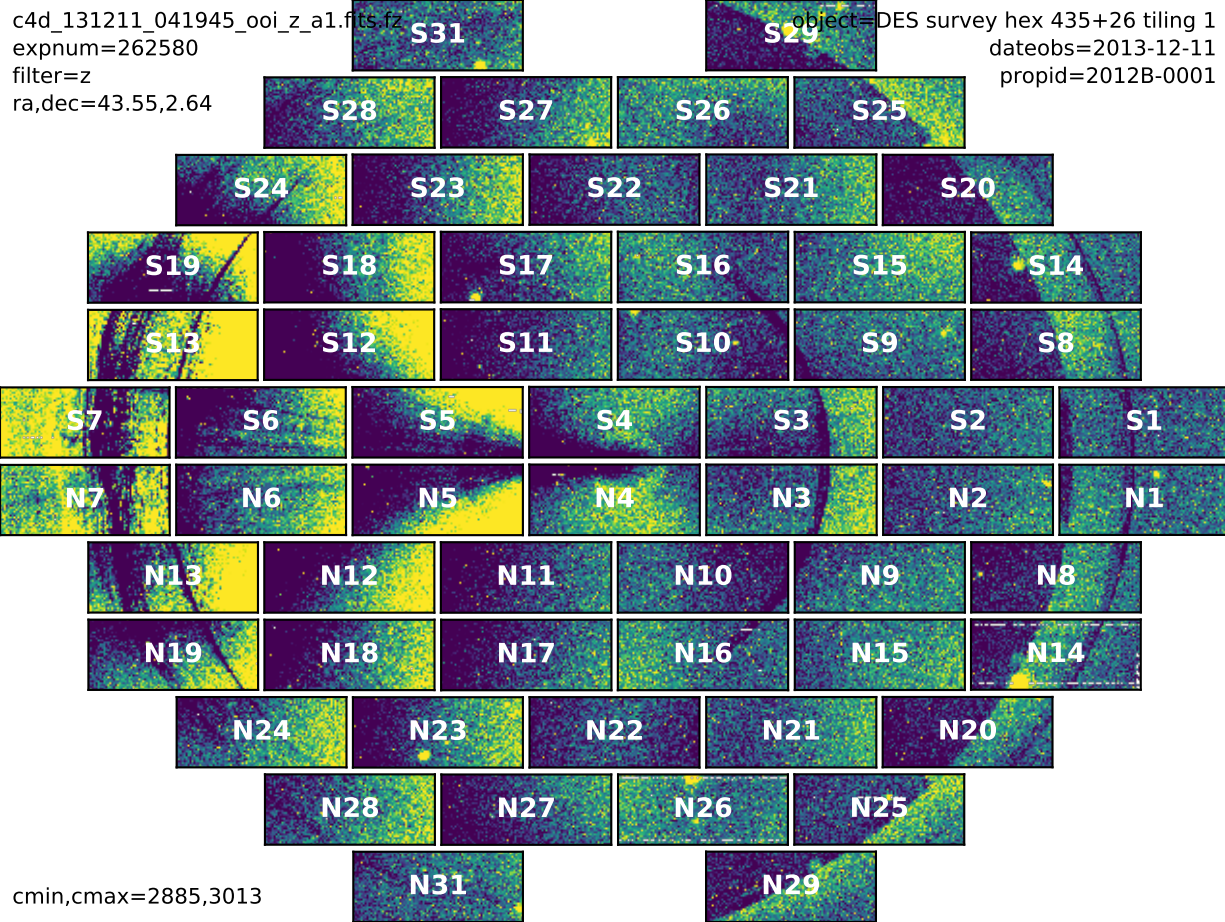
c4d_131211_041746_ooi_z_v2.fits.gz
expnum=262579
filter=z
ra,dec=41.95,1.63

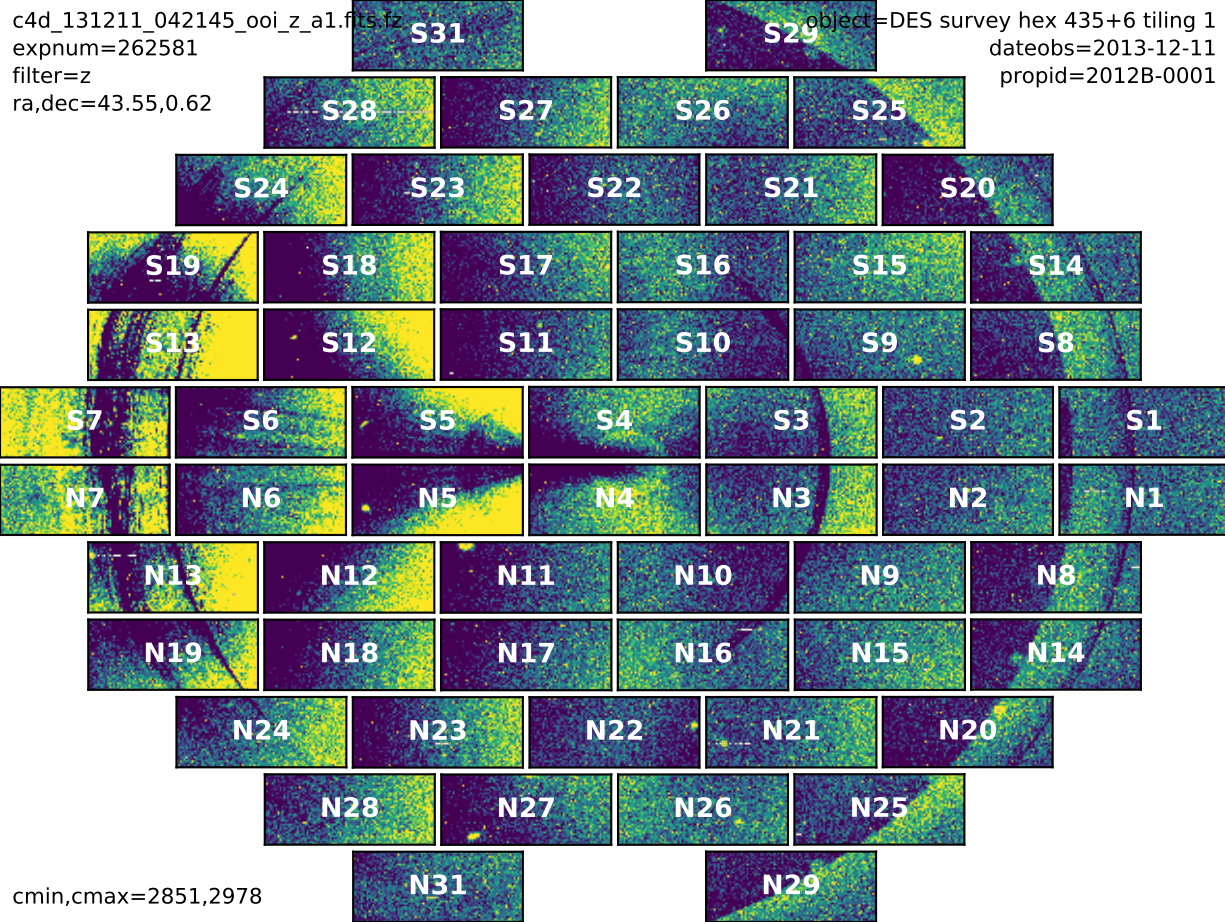
S31
S30
S29

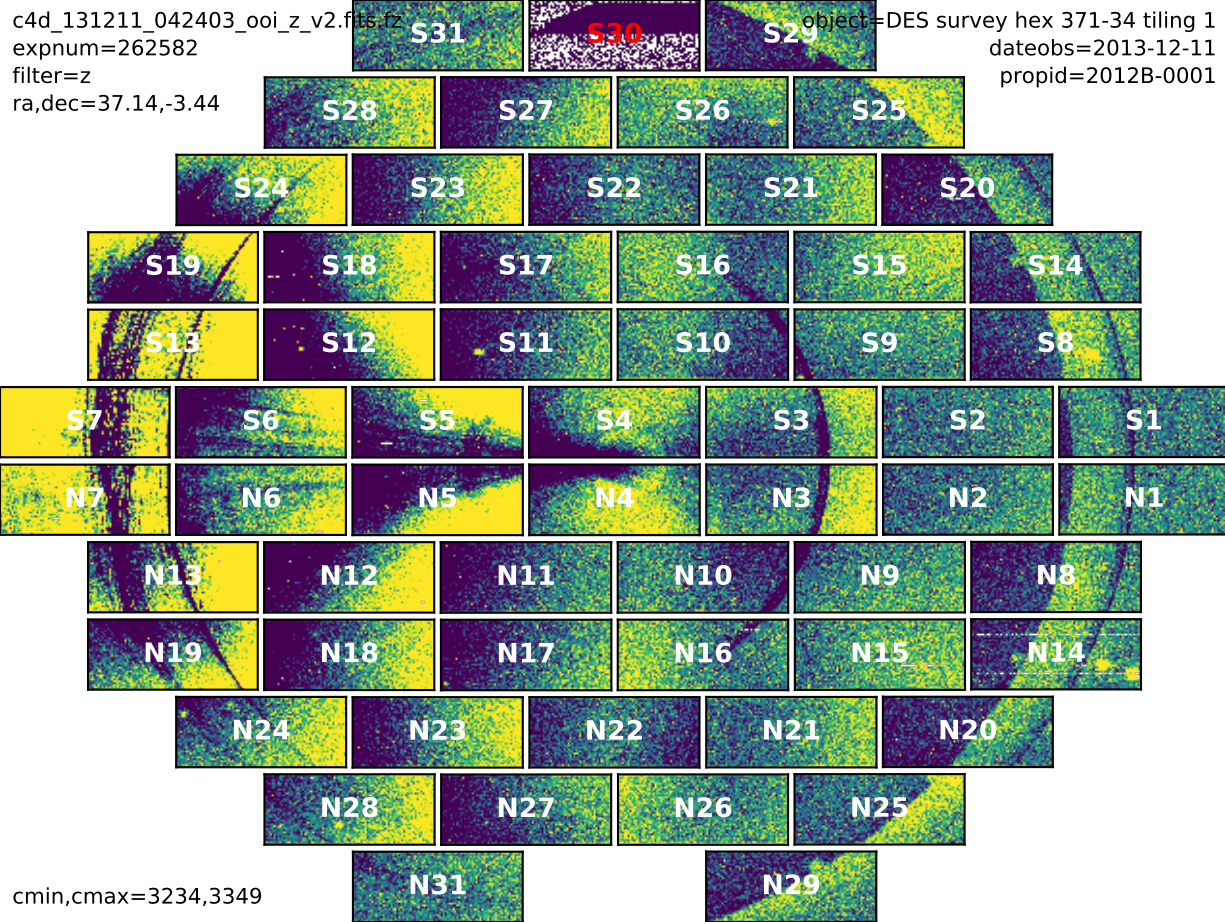
object=DES survey hex 419+16 tiling 1
dateobs=2013-12-11
propid=2012B-0001



cmin,cmax=2969,3083



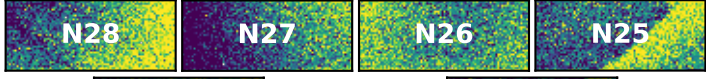
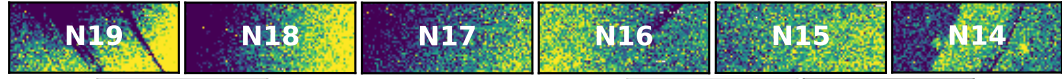
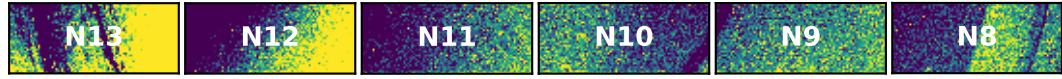
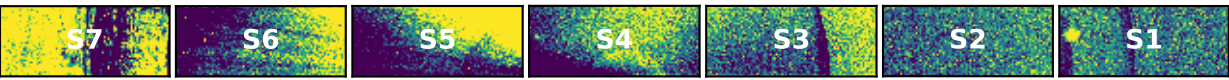
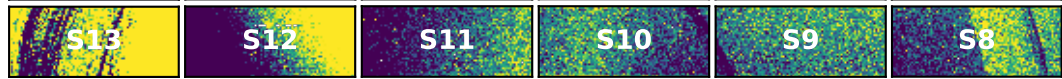
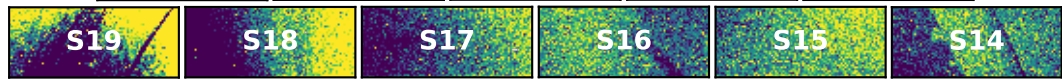
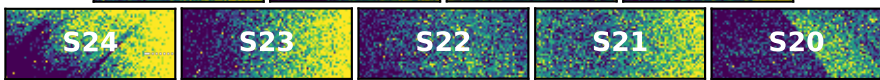
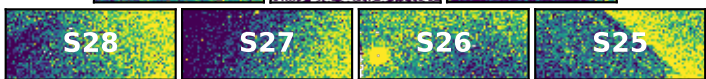




c4d_131211_042601_ooi_z_v2.fits.gz
expnum=262583
filter=z
ra,dec=40.35,-1.41



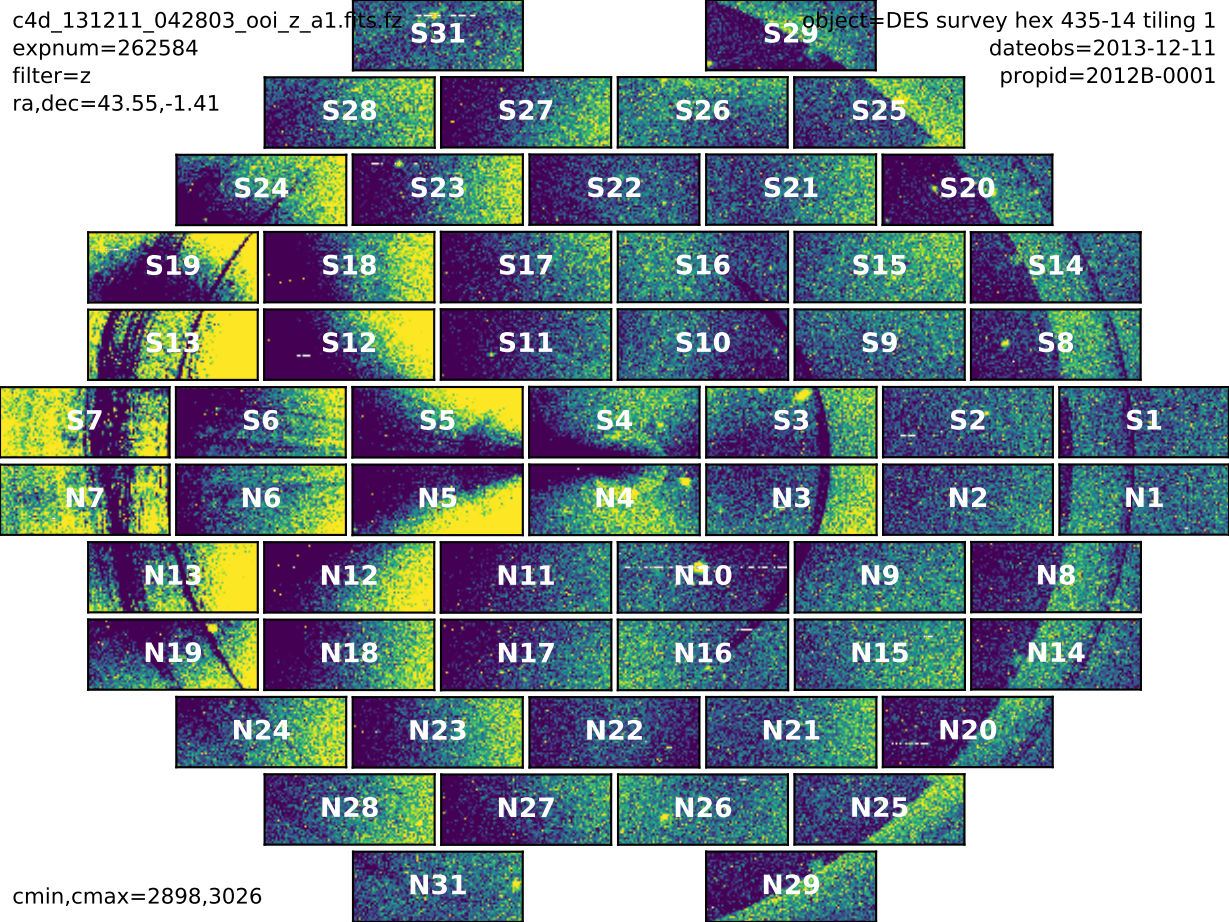
object=DES survey hex 404-14 tiling 1
dateobs=2013-12-11
propid=2012B-0001



cmin,cmax=3087,3200

c4d_131211_042803_ooi_z_a1.fits.gz
expnum=262584
filter=z
ra,dec=43.55,-1.41

object=DES survey hex 435-14 tiling 1
dateobs=2013-12-11
propid=2012B-0001

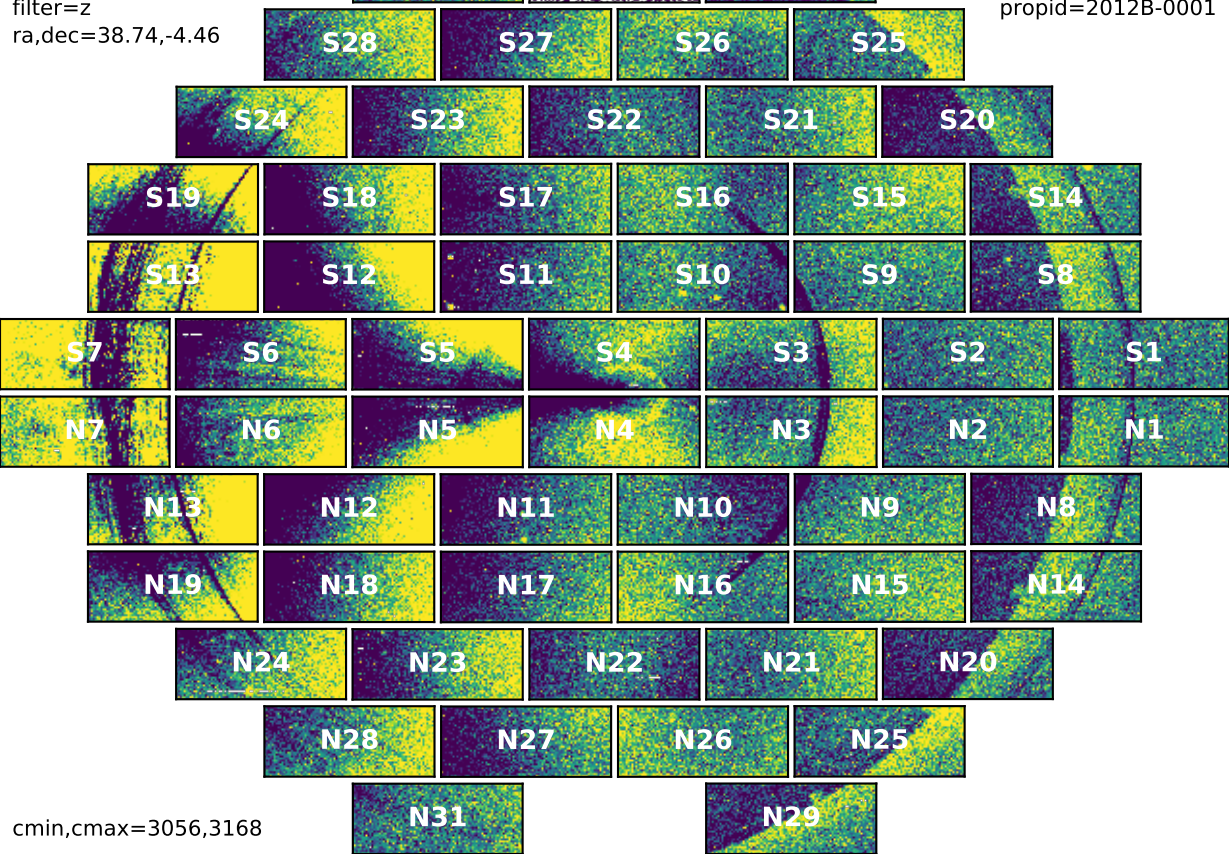


cmin,cmax=2898,3026

c4d_131211_043022_ooi_z_v2.fits.gz
expnum=262585
filter=z
ra,dec=38.74,-4.46



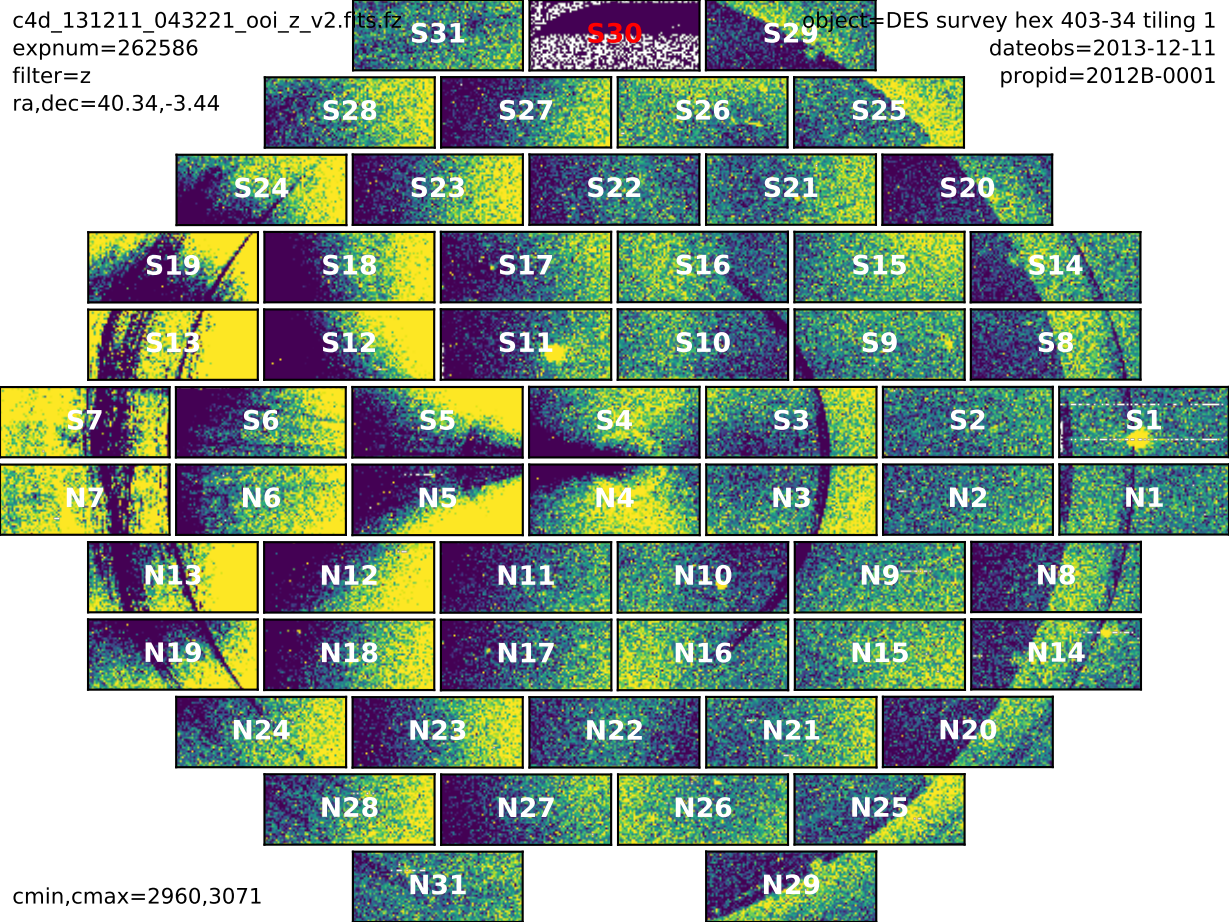
object=DES survey hex 387-45 tiling 1
dateobs=2013-12-11
propid=2012B-0001



cmin,cmax=3056,3168

c4d_131211_043221_ooi_z_v2.fits.gz
expnum=262586
filter=z
ra,dec=40.34,-3.44

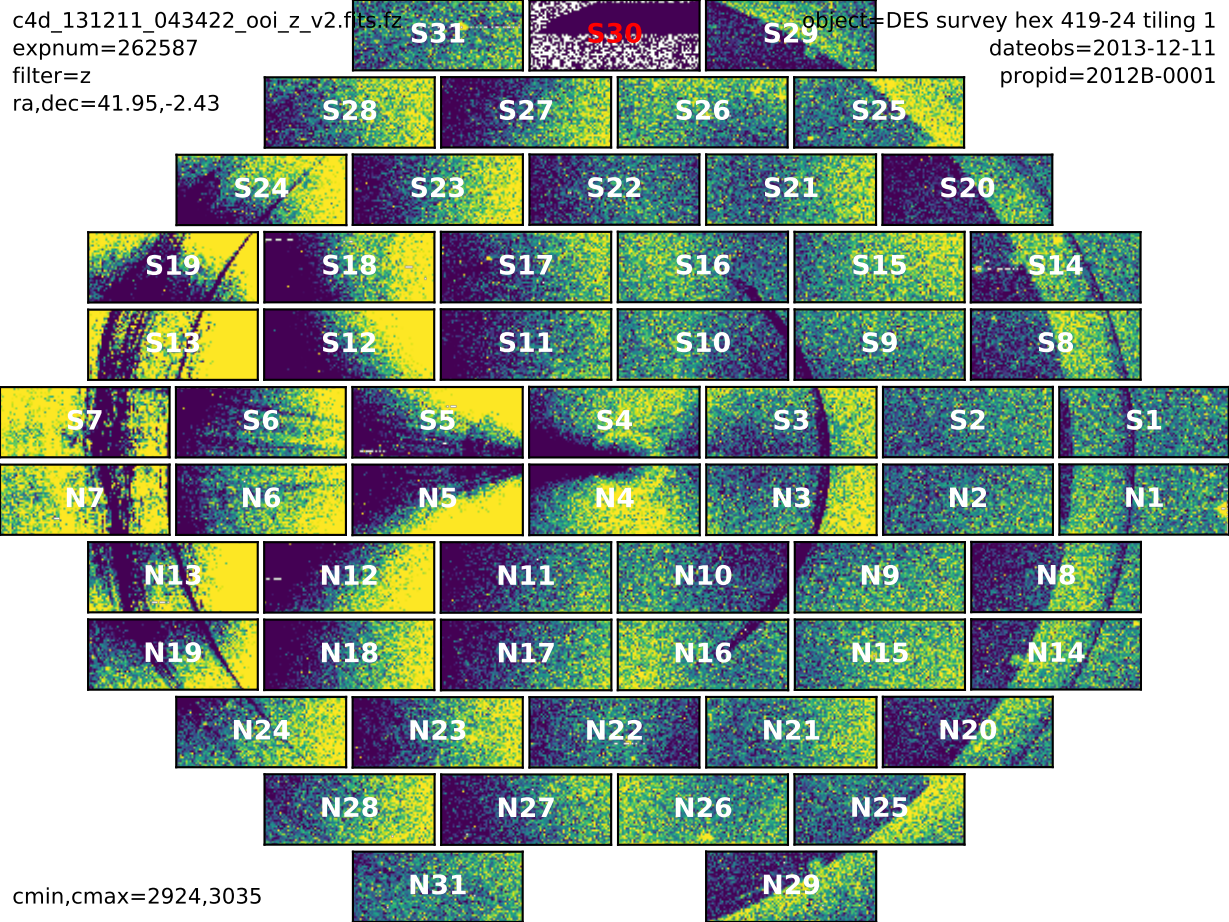
object=DES survey hex 403-34 tiling 1
dateobs=2013-12-11
propid=2012B-0001



cmin,cmax=2960,3071

c4d_131211_043422_ooi_z_v2.fits.gz
expnum=262587
filter=z
ra,dec=41.95,-2.43

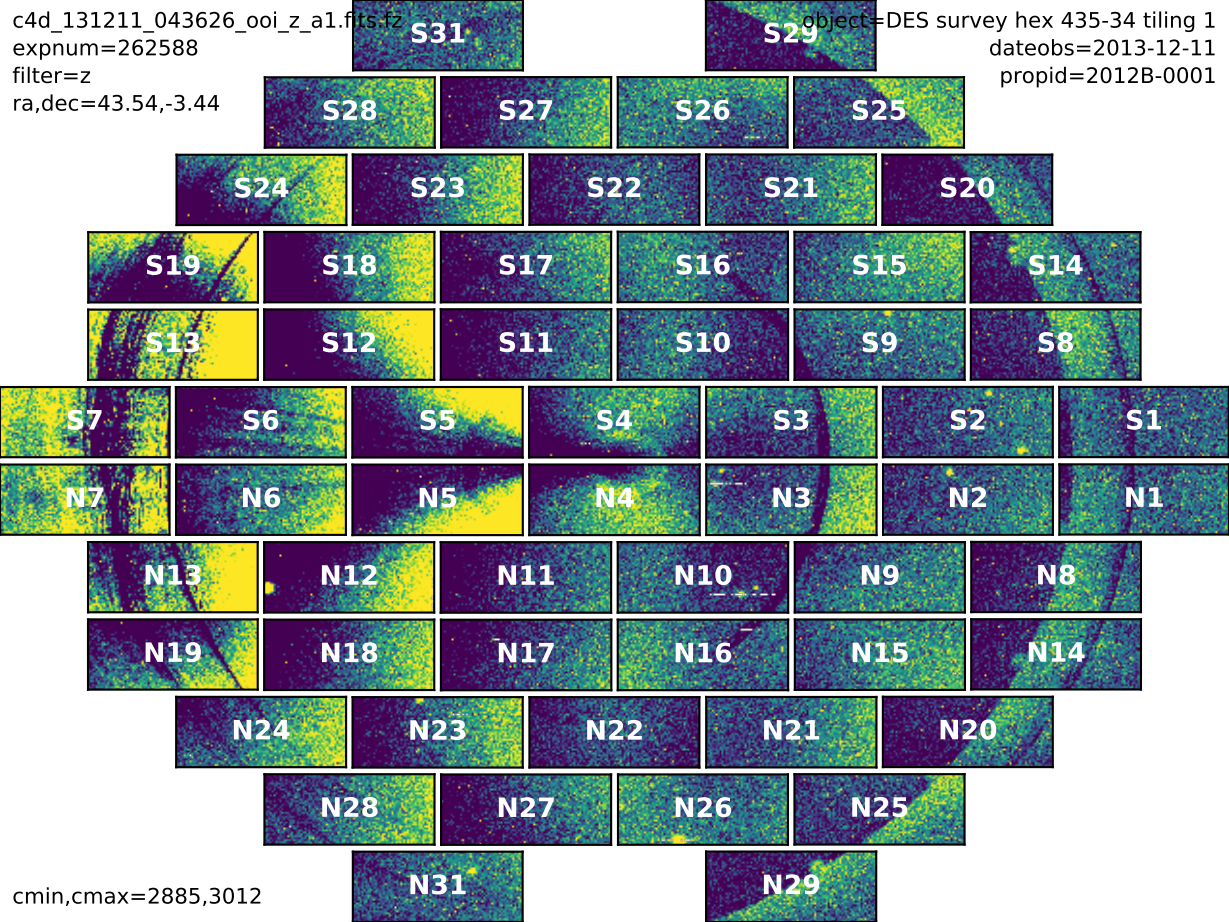
object=DES survey hex 419-24 tiling 1
dateobs=2013-12-11
propid=2012B-0001



cmin,cmax=2924,3035

c4d_131211_043626_ooi_z_a1.fits.gz
expnum=262588
filter=z
ra,dec=43.54,-3.44

object=DES survey hex 435-34 tiling 1
dateobs=2013-12-11
propid=2012B-0001

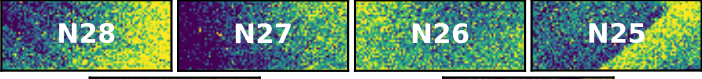
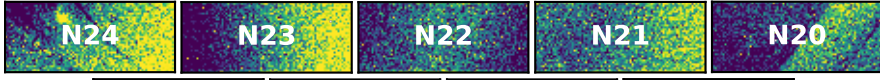
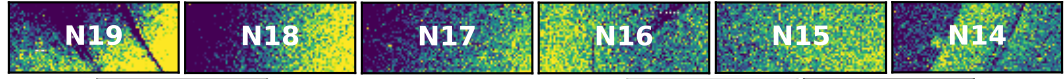
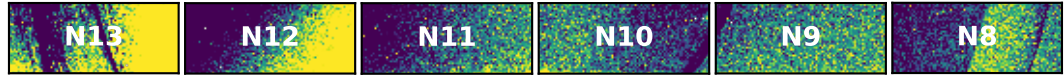
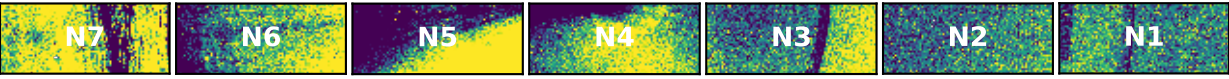
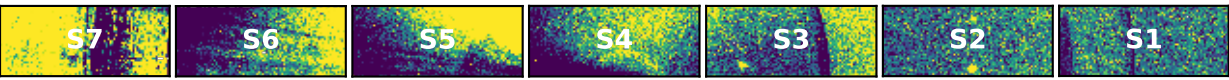
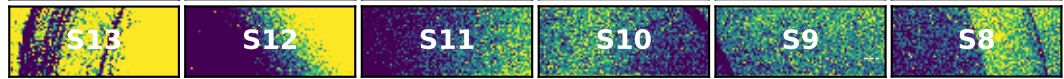
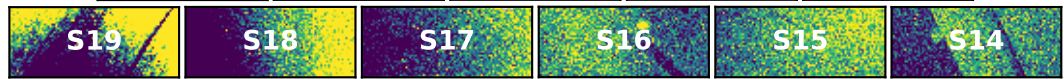
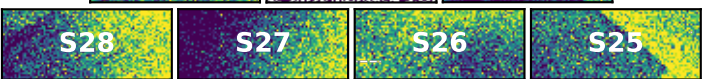


cmin,cmax=2885,3012

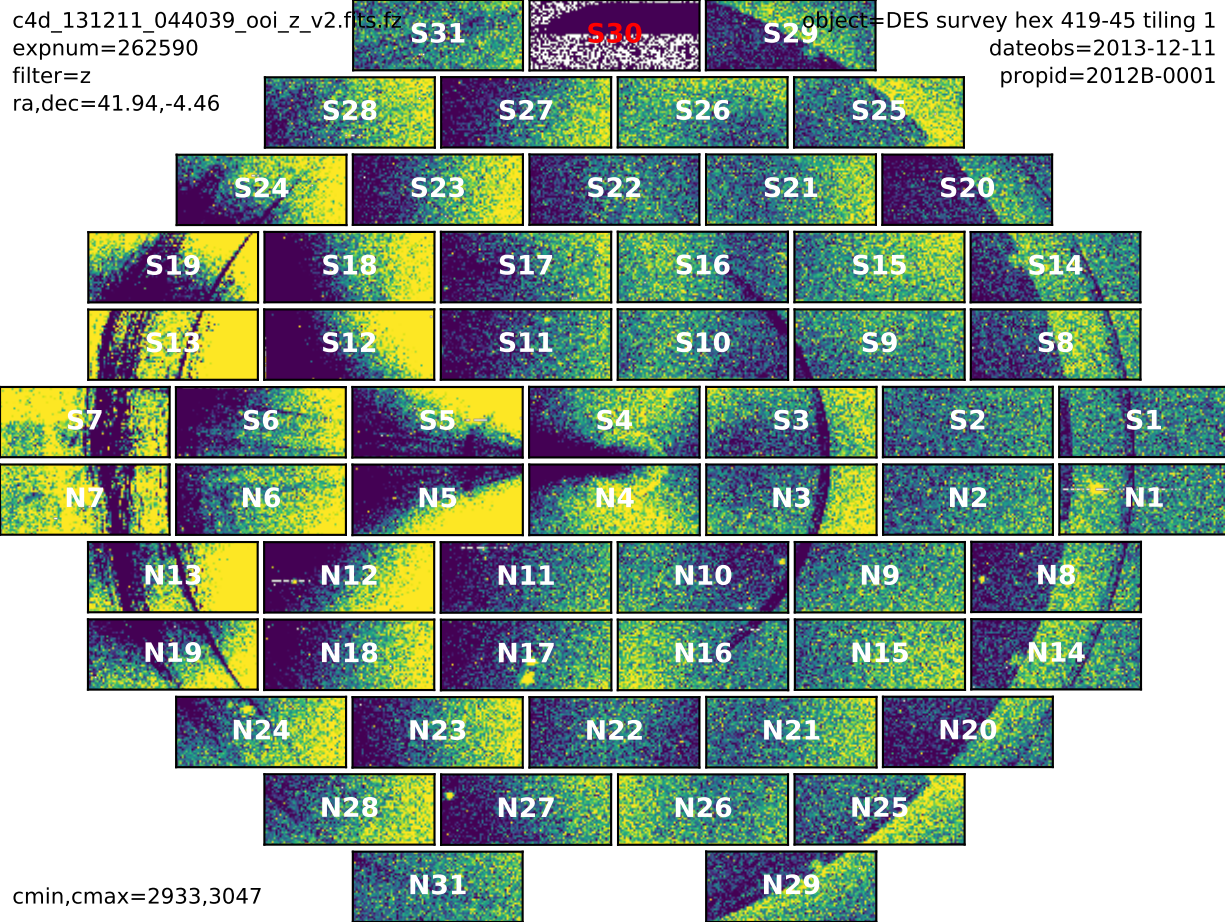
c4d_131211_043838_ooi_z_v2.fits.gz
expnum=262589
filter=z
ra,dec=40.33,-5.47

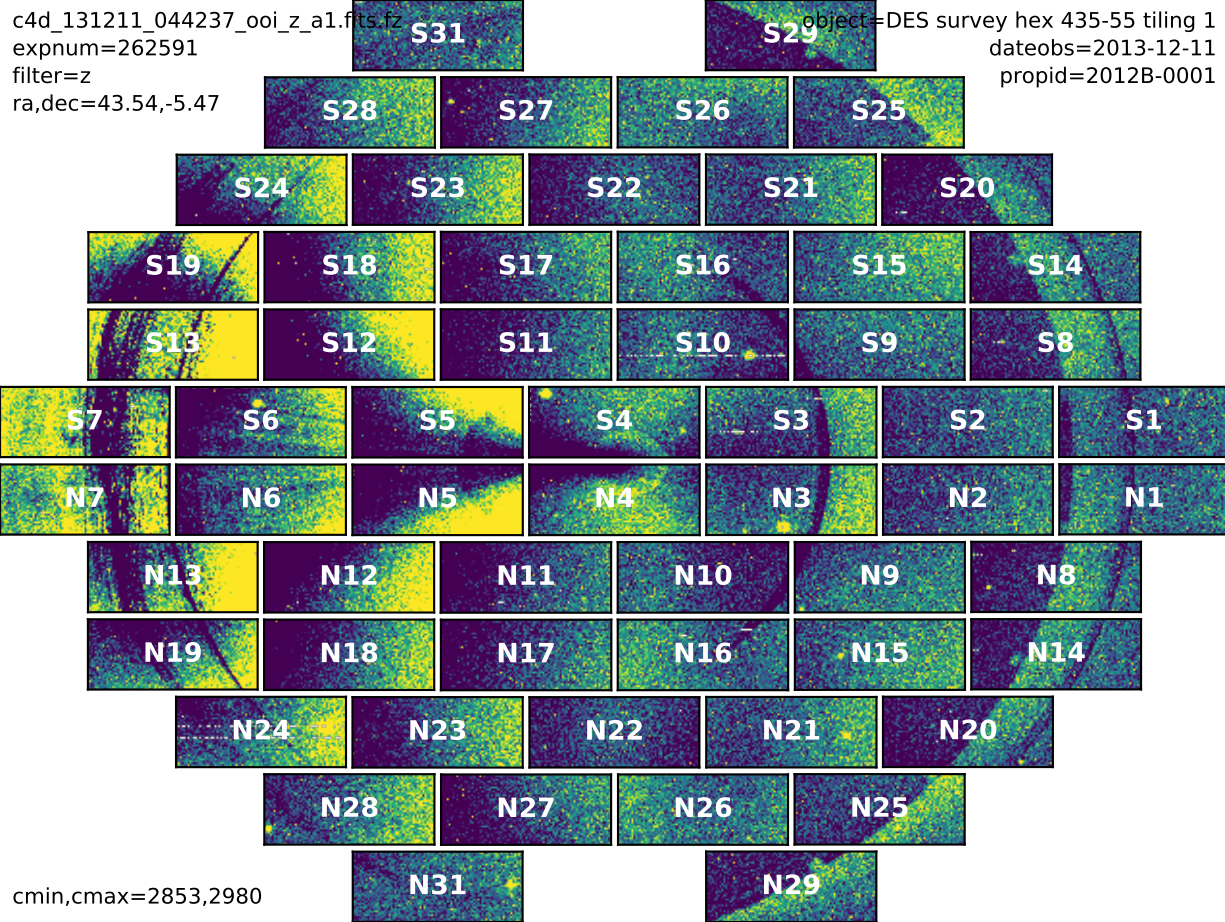


object=DES survey hex 403-55 tiling 1
dateobs=2013-12-11
propid=2012B-0001



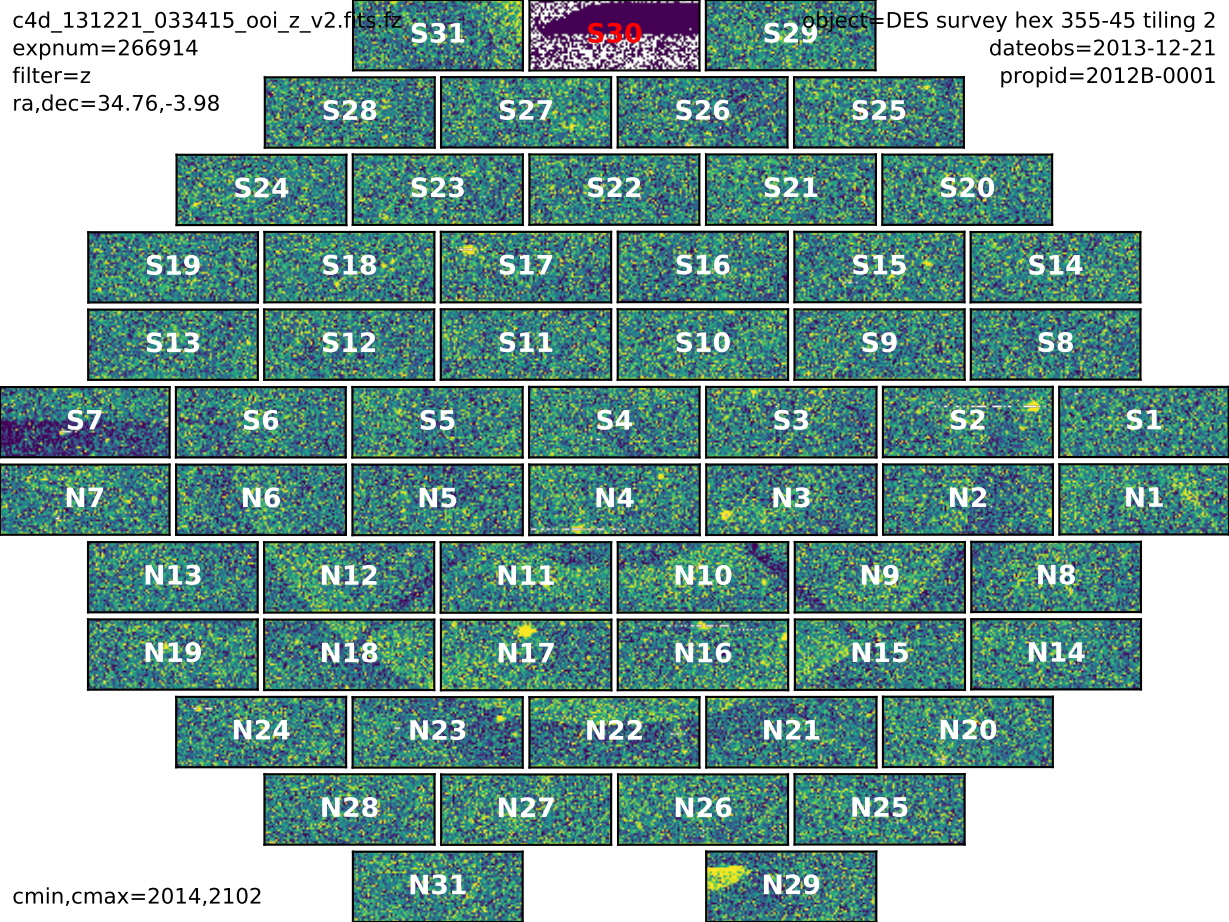
cmin,cmax=3221,3337



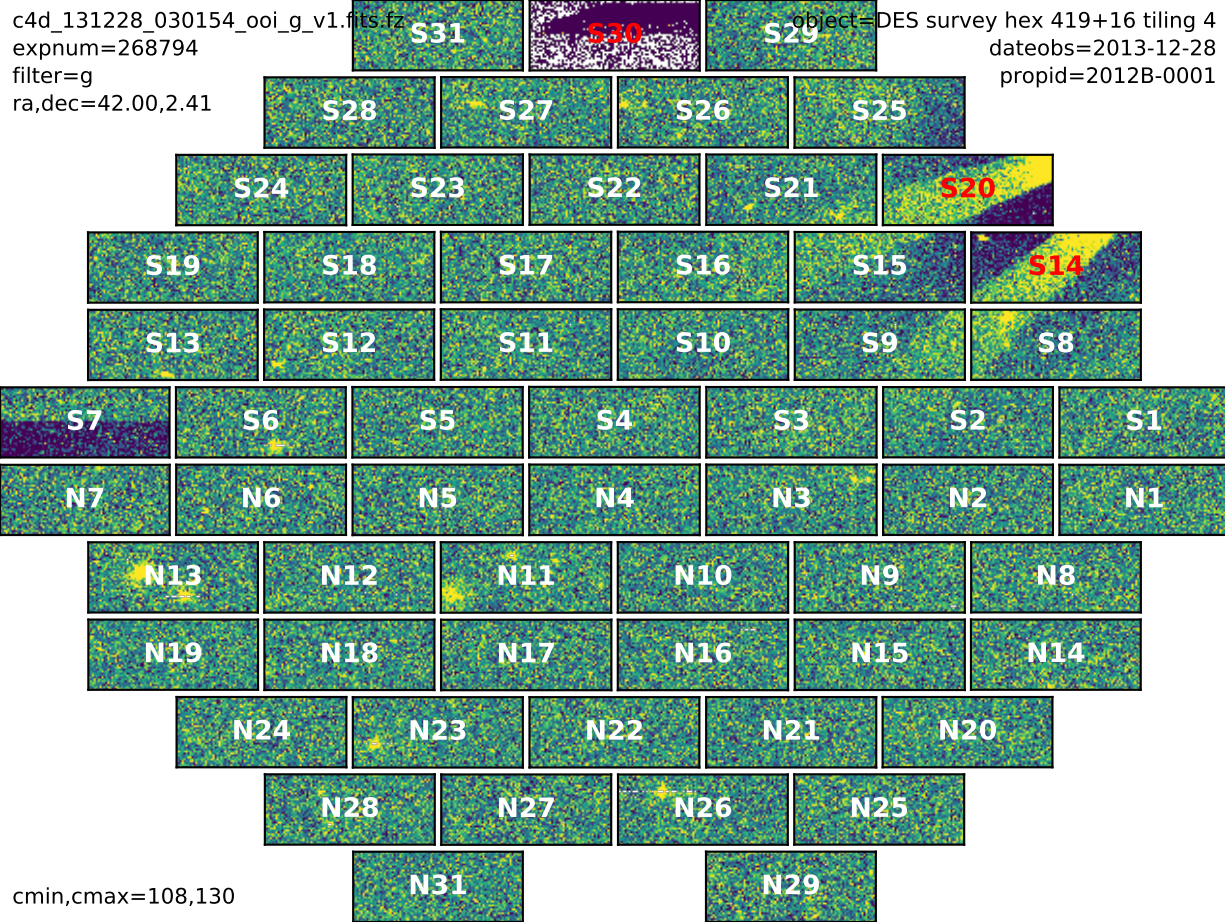


c4d_131221_033415_ooi_z_v2.fits
expnum=266914
filter=z
ra,dec=34.76,-3.98

object=DES survey hex 355-45 tiling 2
dateobs=2013-12-21
propid=2012B-0001

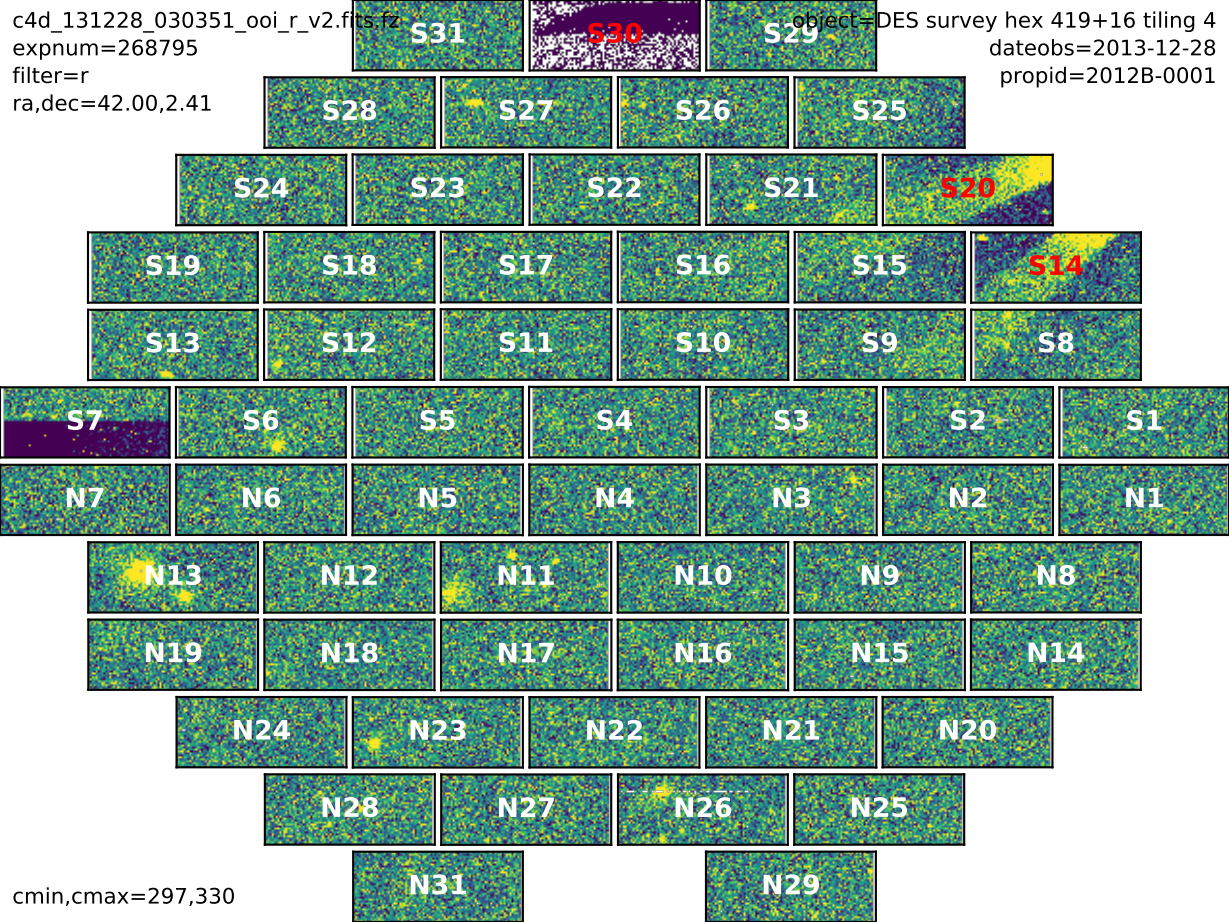


cmin,cmax=2014,2102



c4d_131228_030351_ooi_r_v2.fits.gz
expnum=268795
filter=r
ra,dec=42.00,2.41

object=DES survey hex 419+16 tiling 4
dateobs=2013-12-28
propid=2012B-0001



cmin,cmax=297,330

