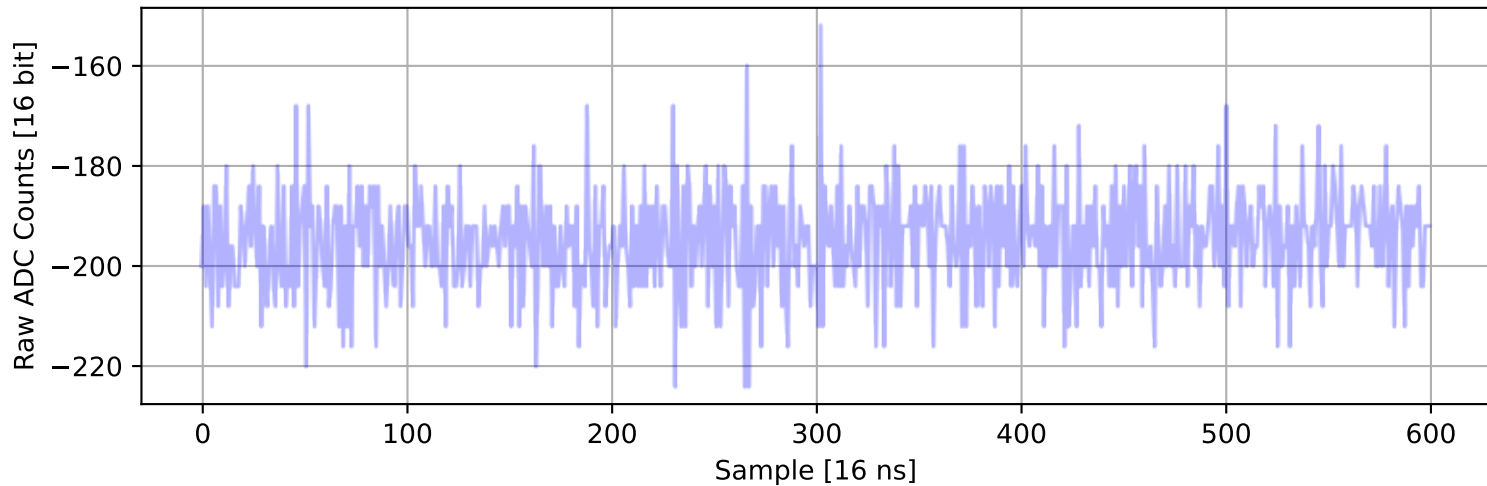
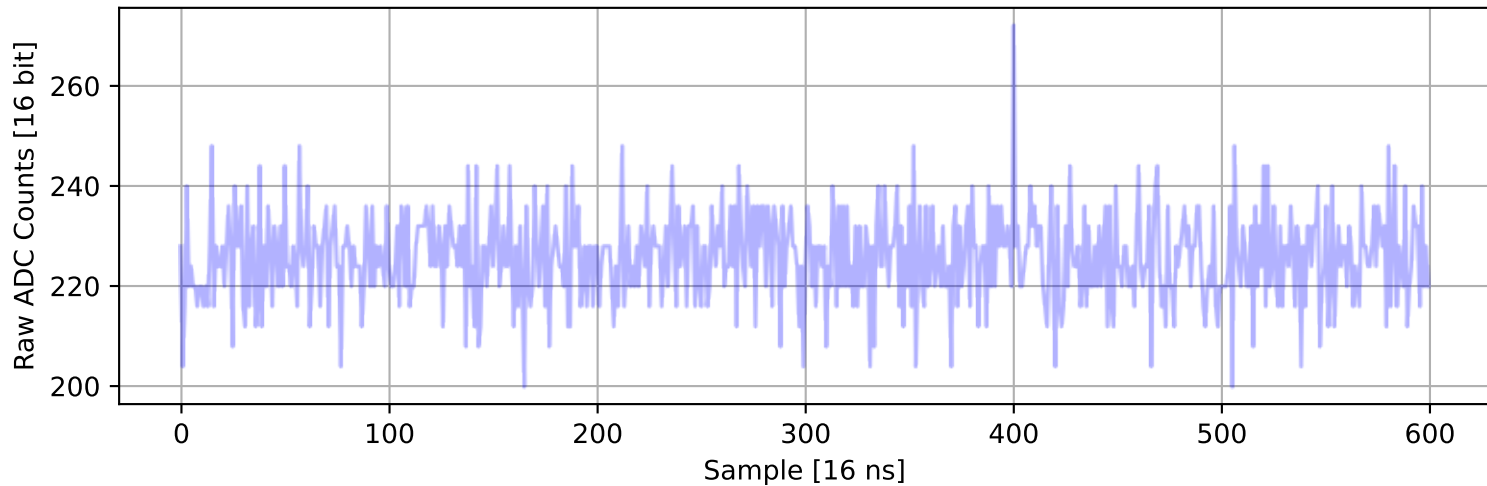


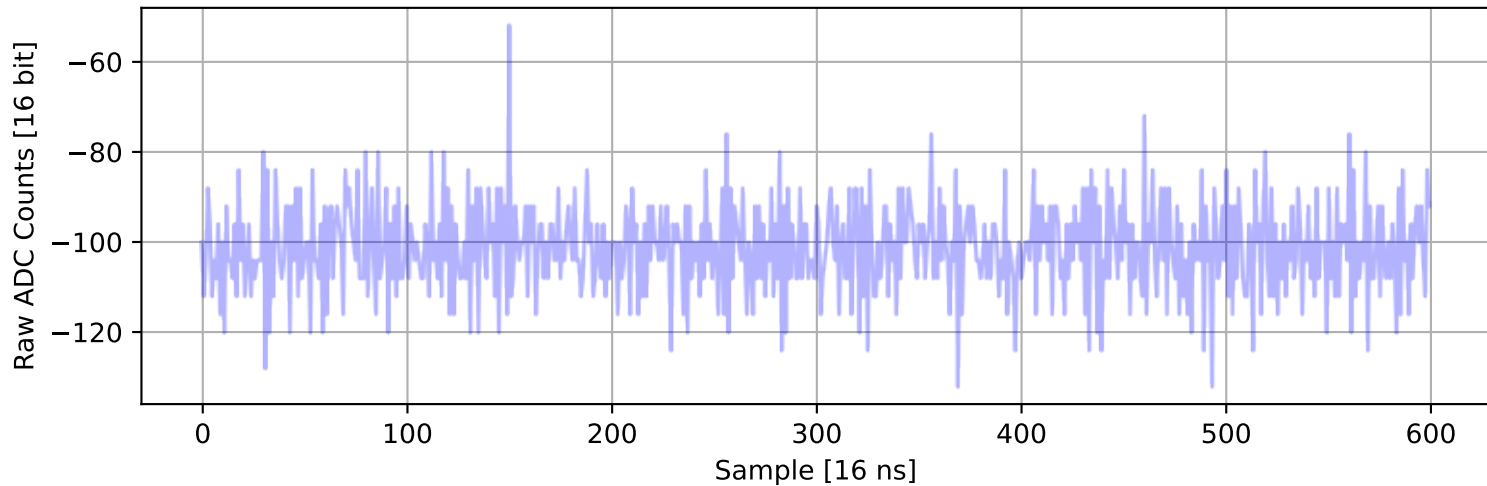
ADC 2, Channel 0, Event 183: Max Signal Waveform



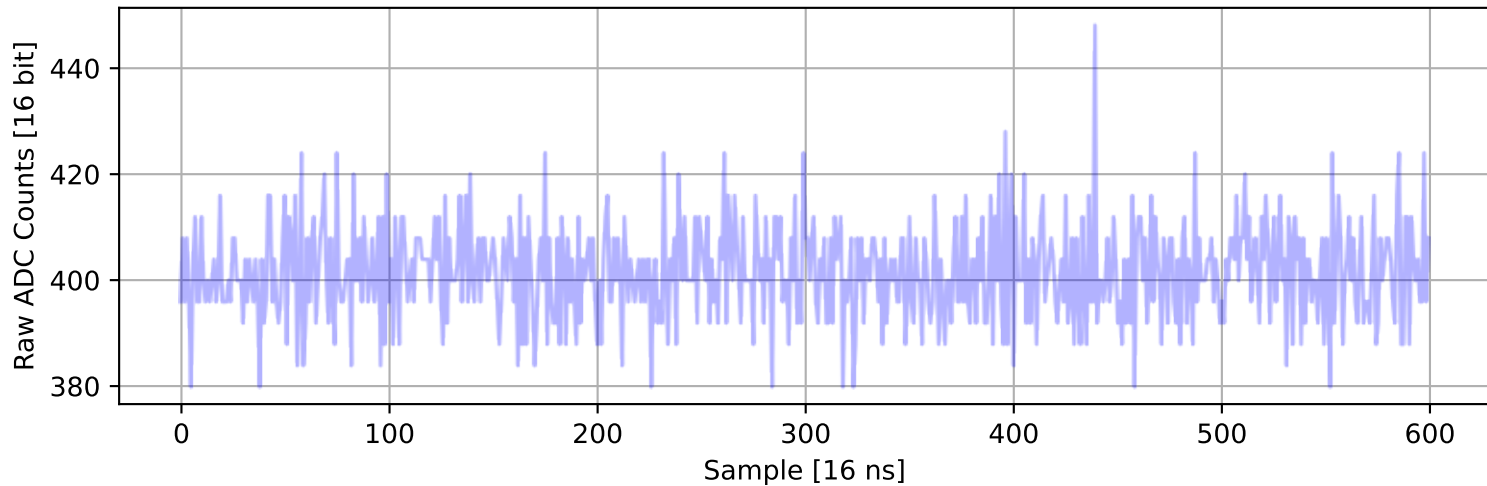
ADC 2, Channel 1, Event 1379: Max Signal Waveform



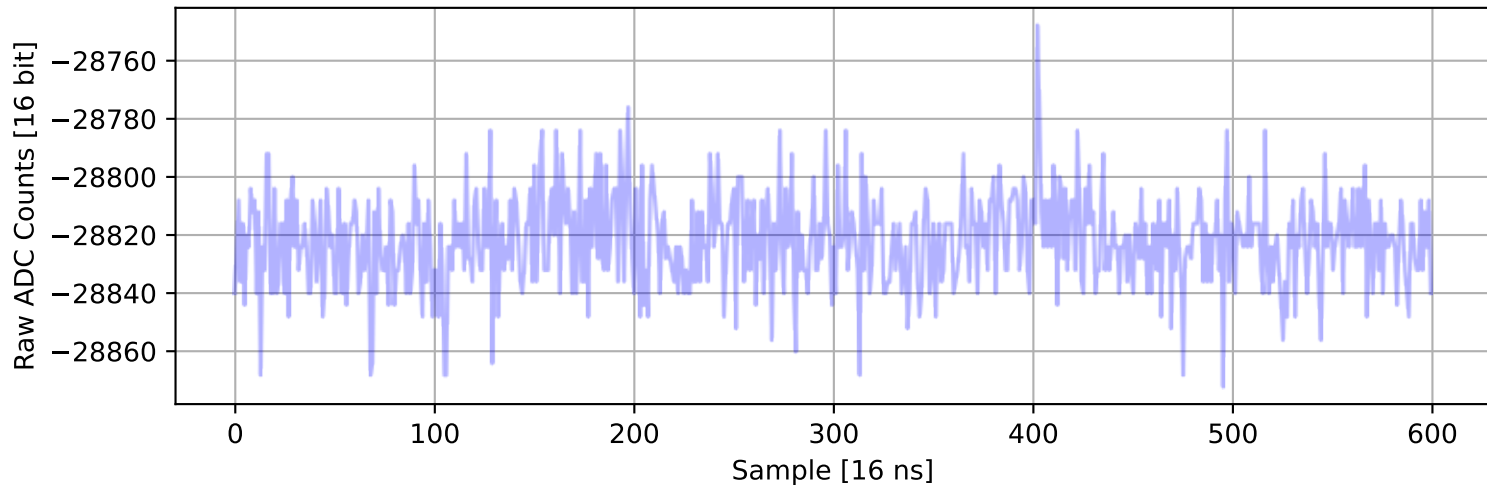
ADC 2, Channel 2, Event 328: Max Signal Waveform



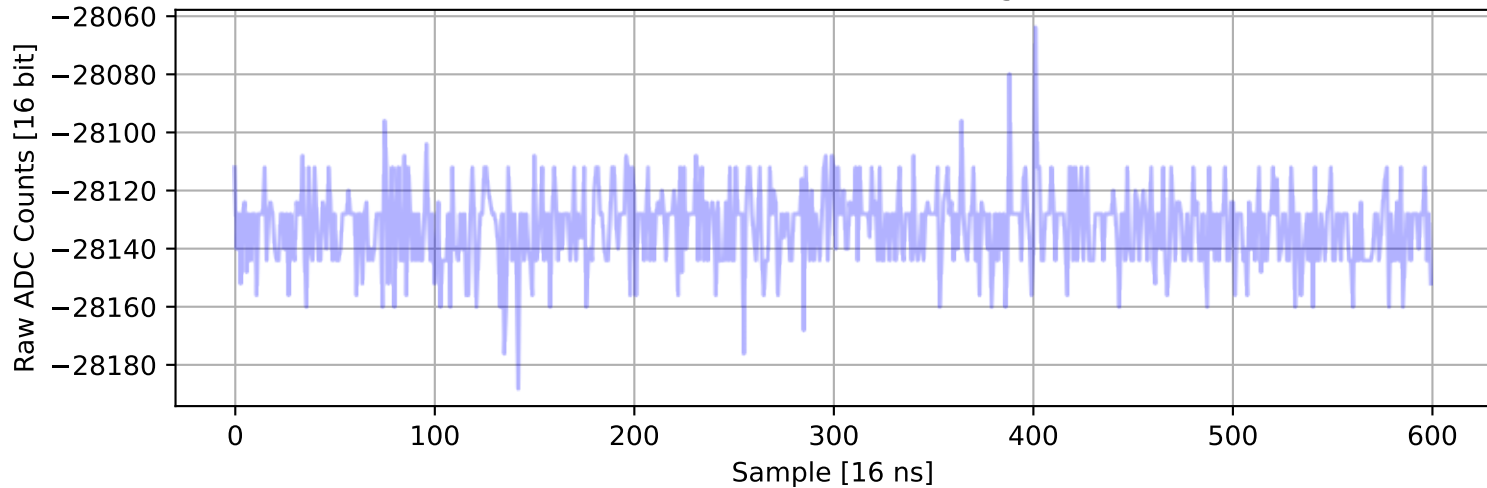
ADC 2, Channel 3, Event 1158: Max Signal Waveform



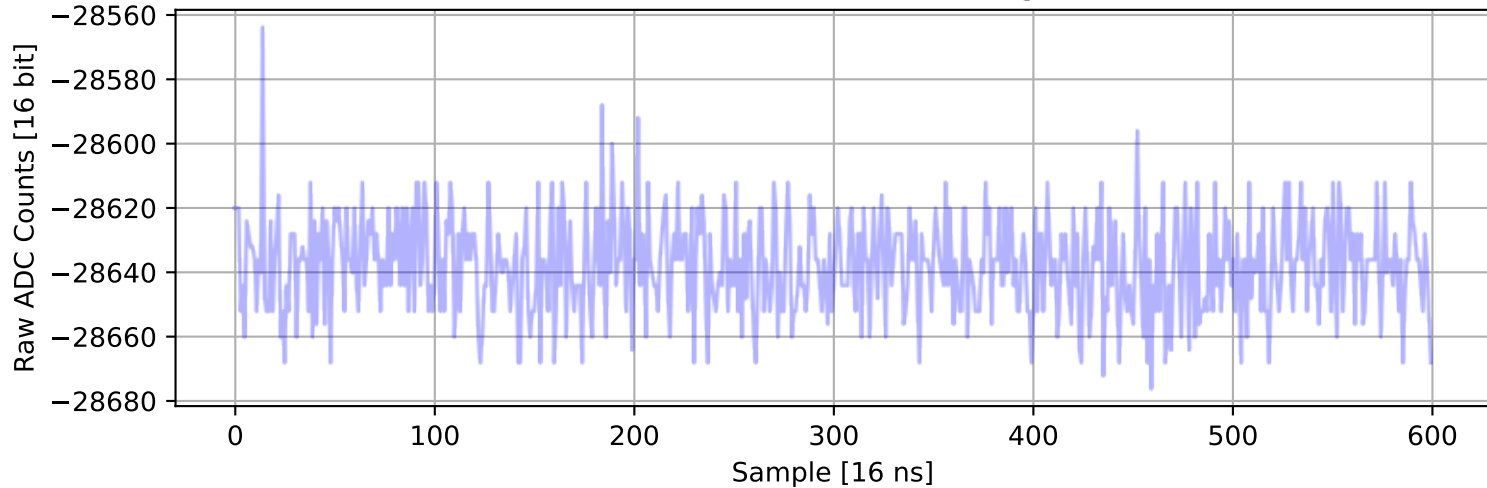
ADC 2, Channel 4, Event 384: Max Signal Waveform



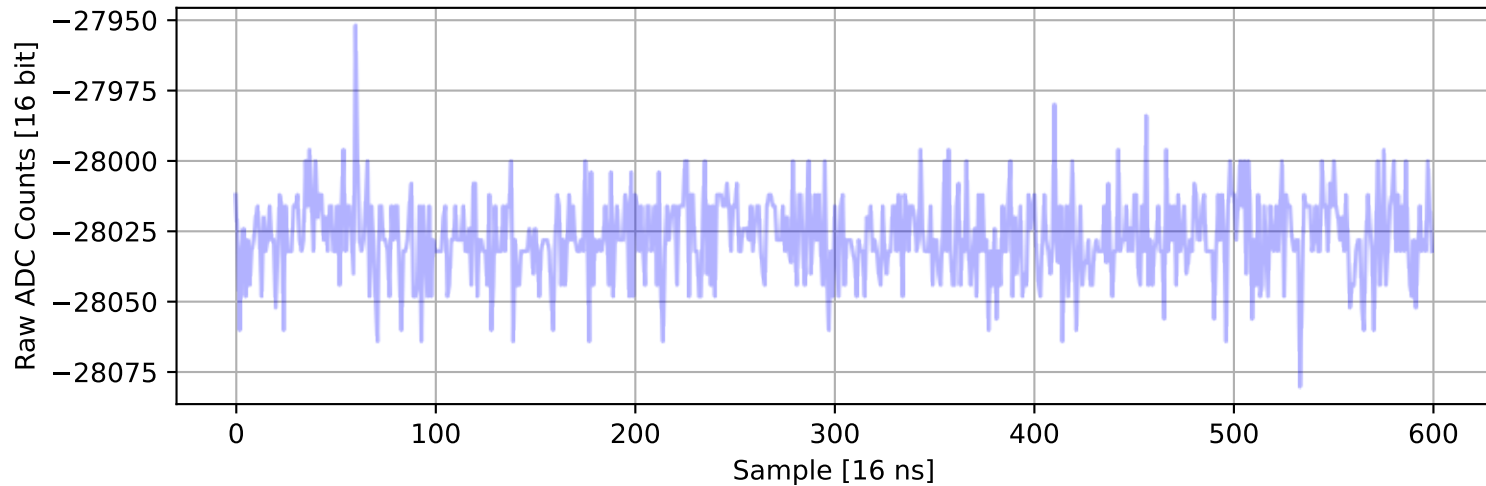
ADC 2, Channel 5, Event 16: Max Signal Waveform



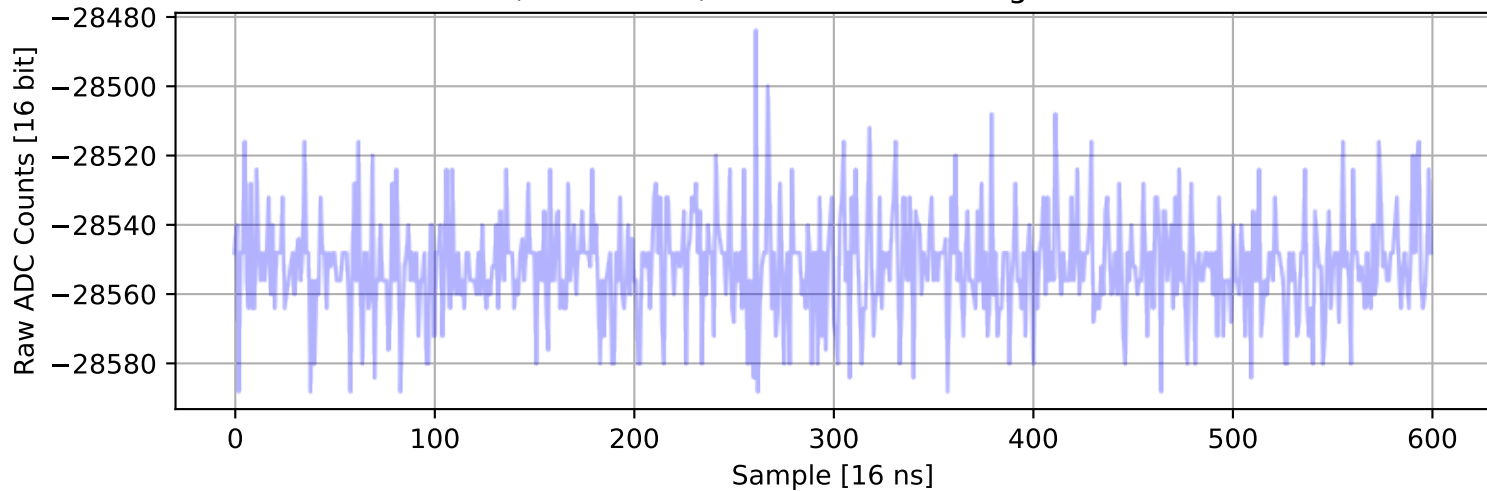
ADC 2, Channel 6, Event 1293: Max Signal Waveform



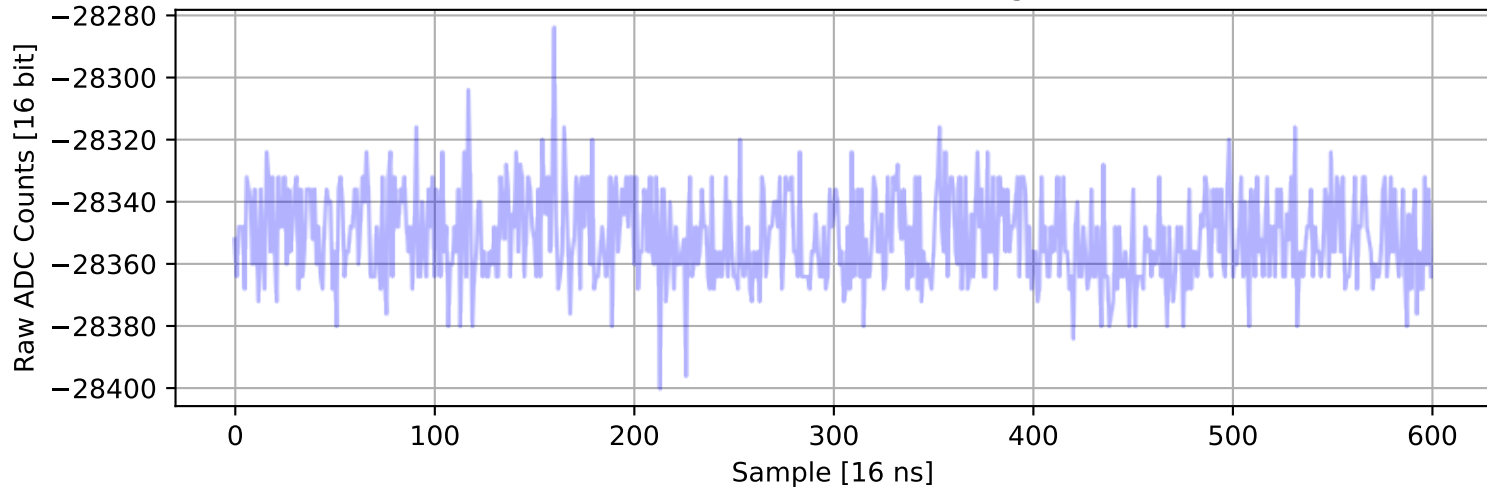
ADC 2, Channel 7, Event 737: Max Signal Waveform



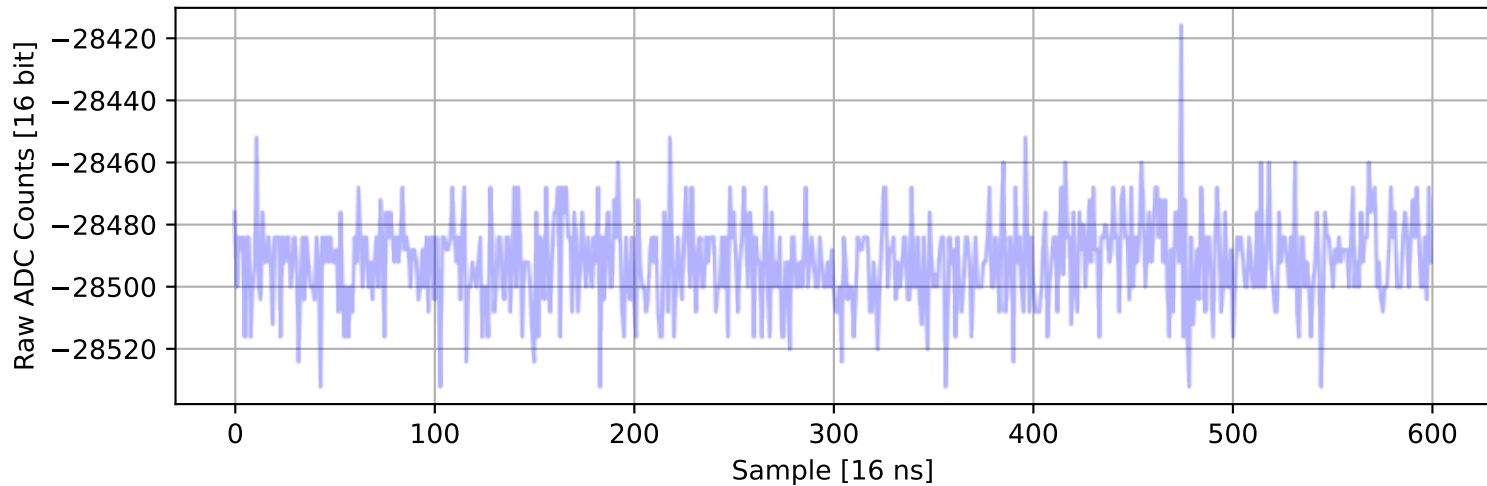
ADC 2, Channel 8, Event 362: Max Signal Waveform



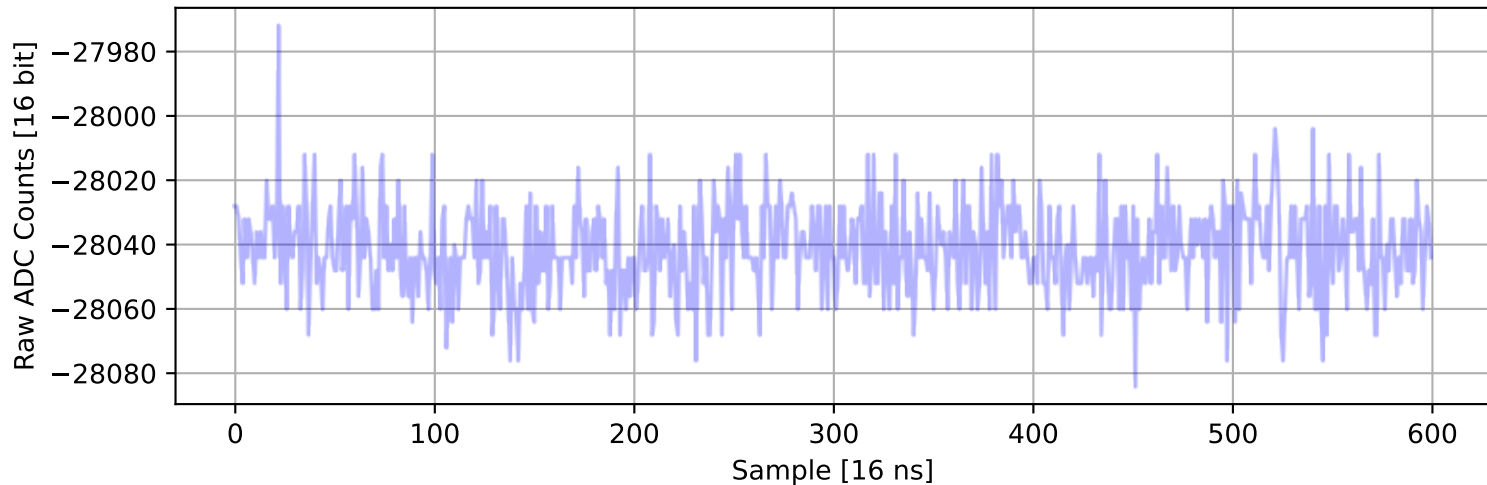
ADC 2, Channel 9, Event 336: Max Signal Waveform



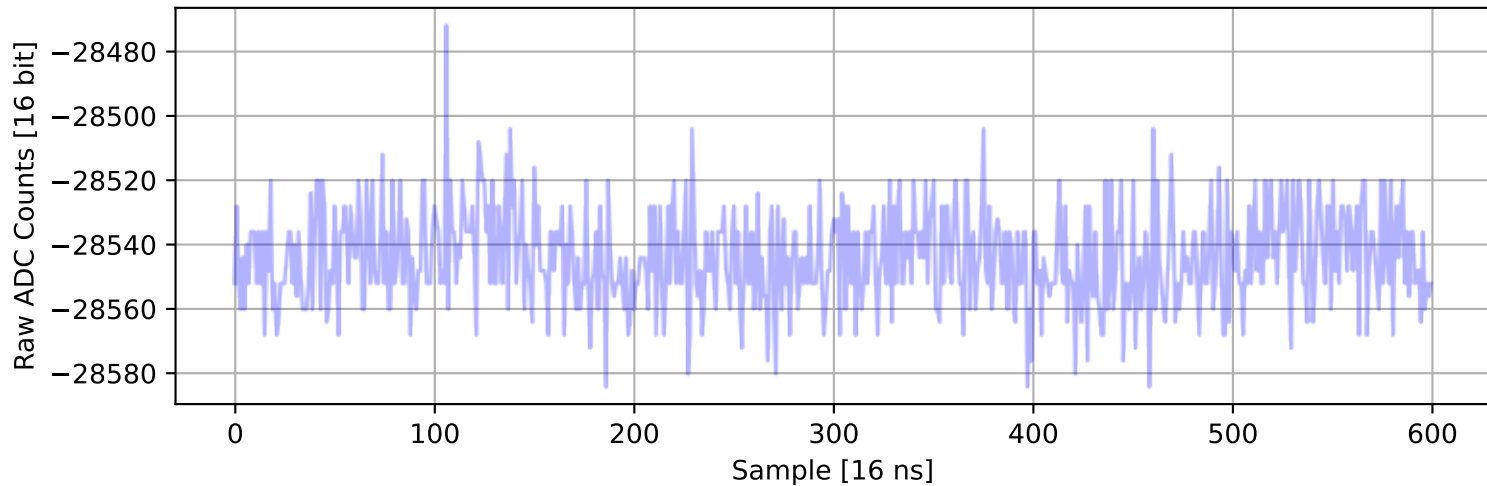
ADC 2, Channel 10, Event 157: Max Signal Waveform



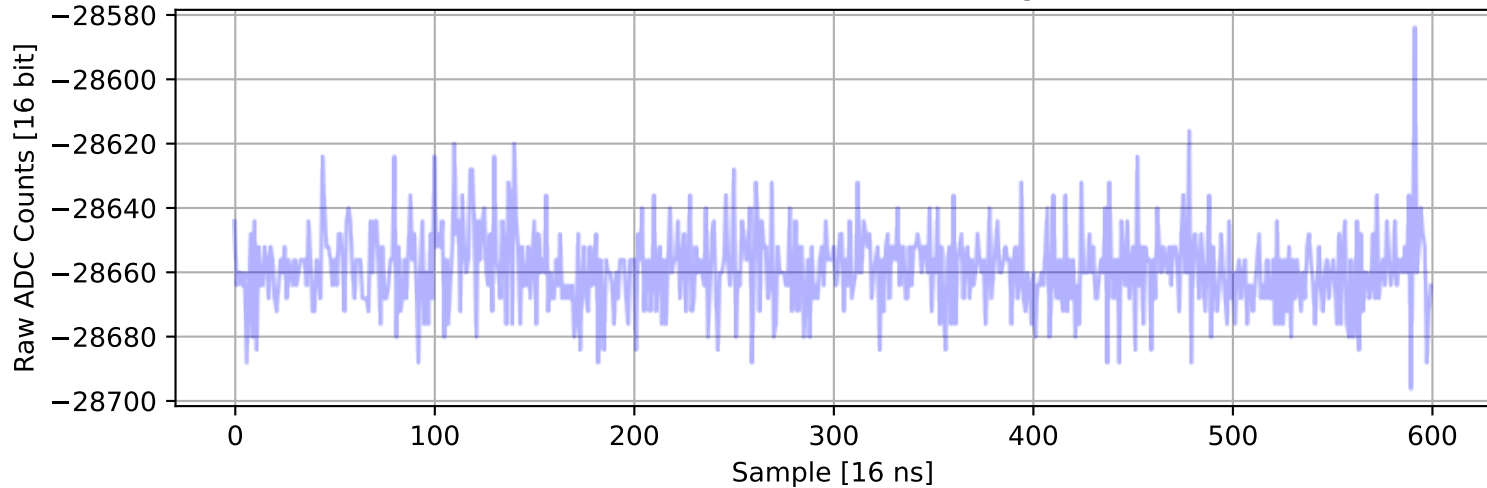
ADC 2, Channel 11, Event 1523: Max Signal Waveform



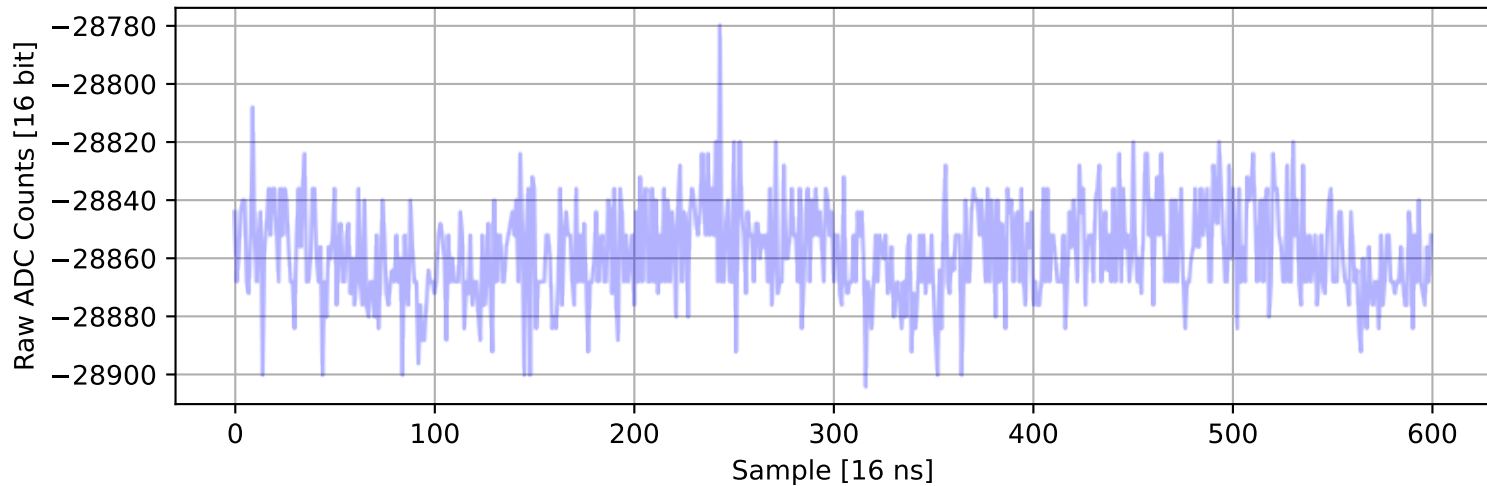
ADC 2, Channel 12, Event 429: Max Signal Waveform



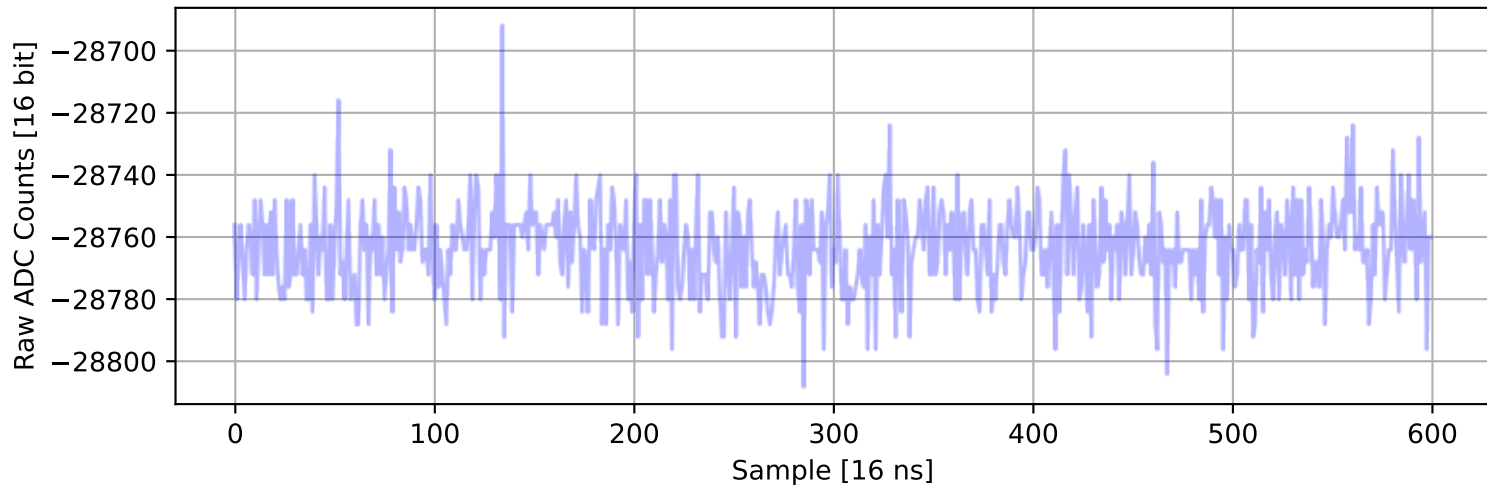
ADC 2, Channel 13, Event 423: Max Signal Waveform



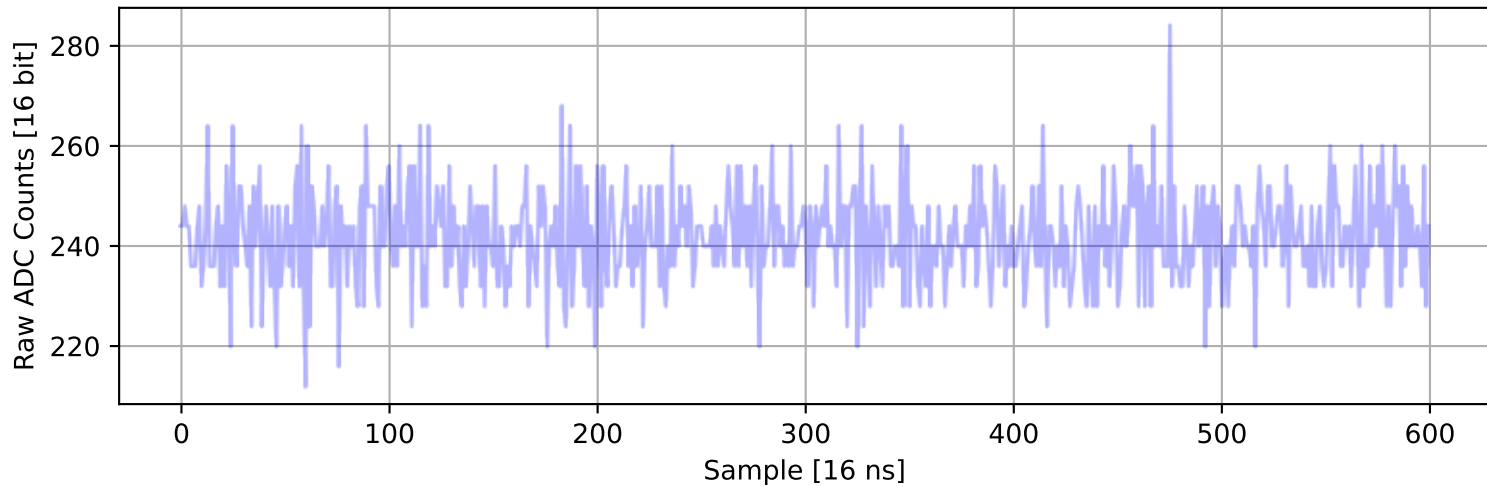
ADC 2, Channel 14, Event 286: Max Signal Waveform



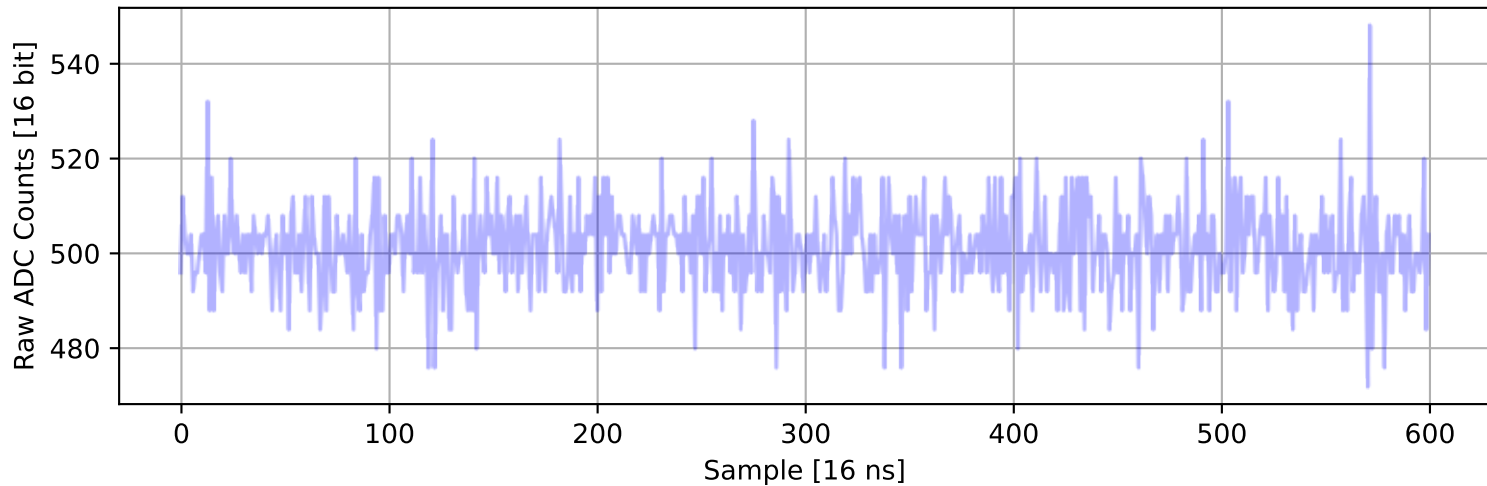
ADC 2, Channel 15, Event 2052: Max Signal Waveform



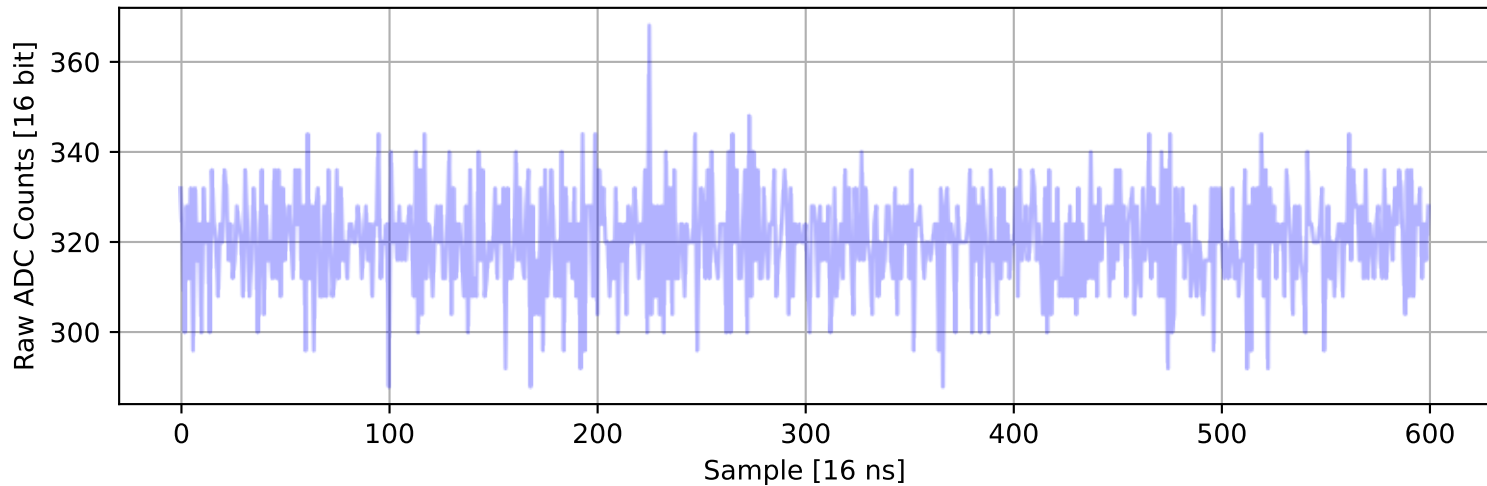
ADC 2, Channel 16, Event 467: Max Signal Waveform



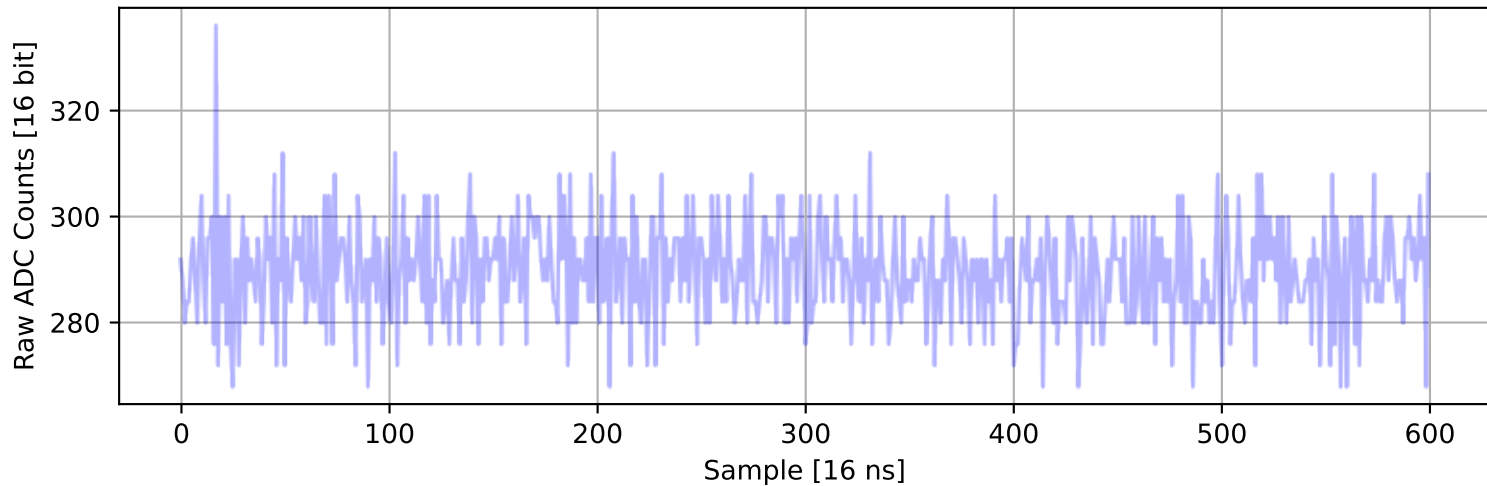
ADC 2, Channel 17, Event 894: Max Signal Waveform



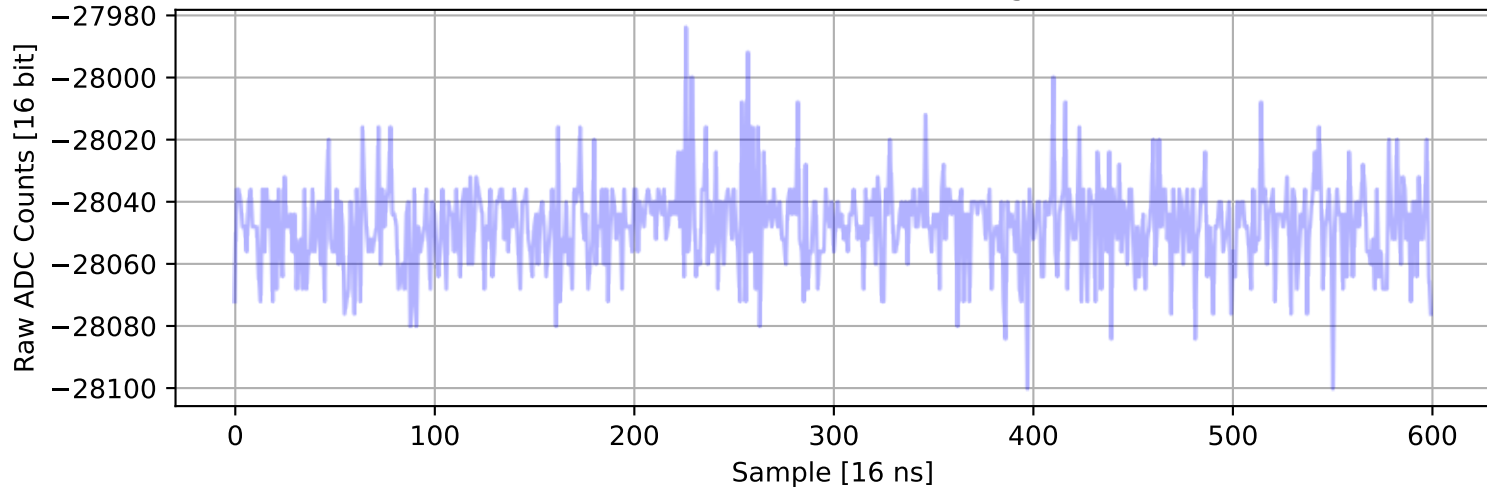
ADC 2, Channel 18, Event 83: Max Signal Waveform



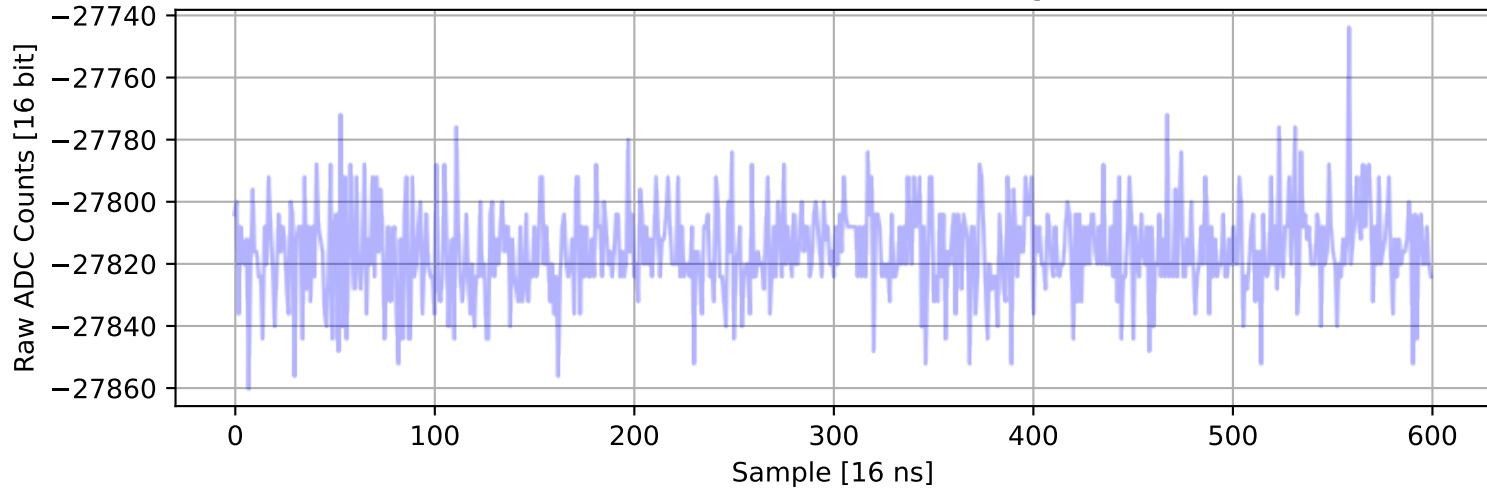
ADC 2, Channel 19, Event 348: Max Signal Waveform



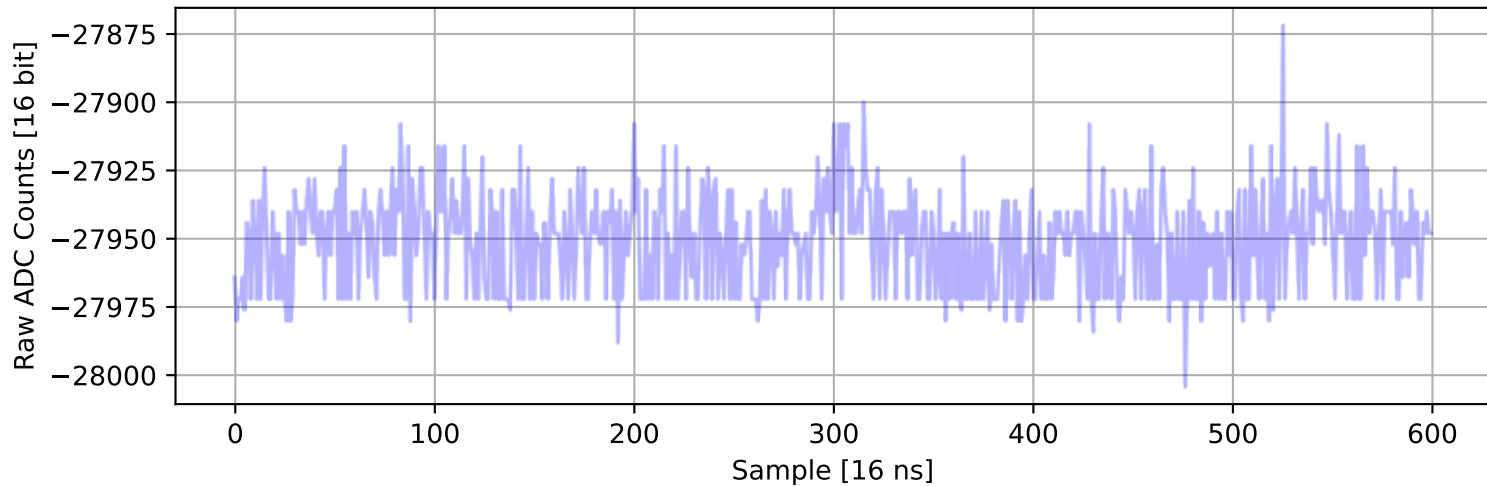
ADC 2, Channel 20, Event 16: Max Signal Waveform



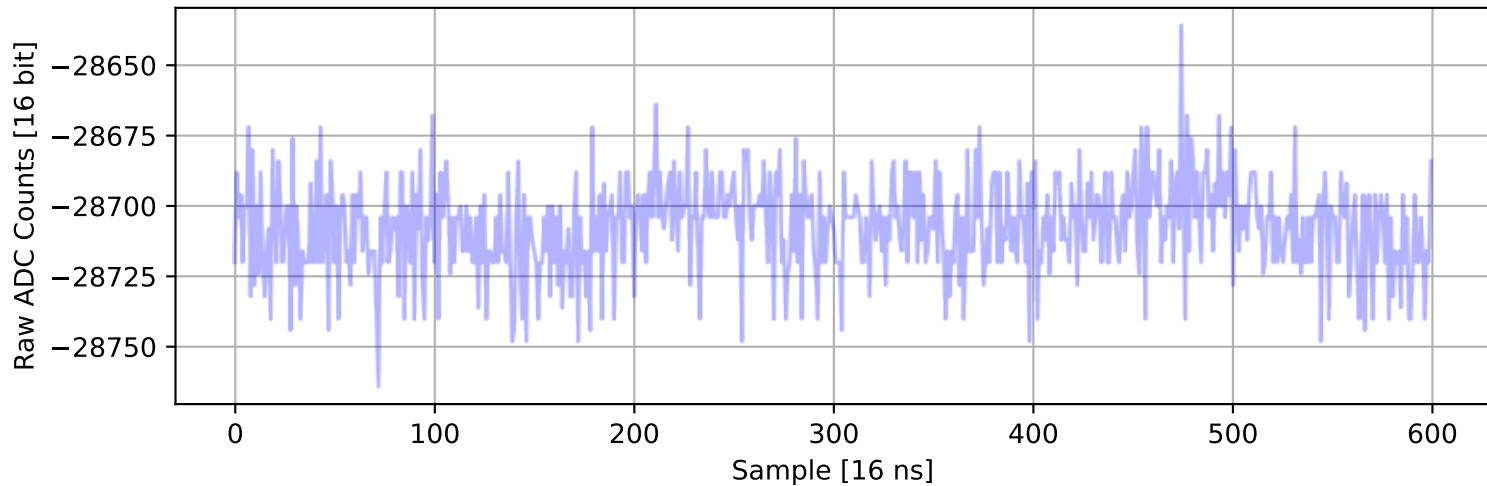
ADC 2, Channel 21, Event 2590: Max Signal Waveform



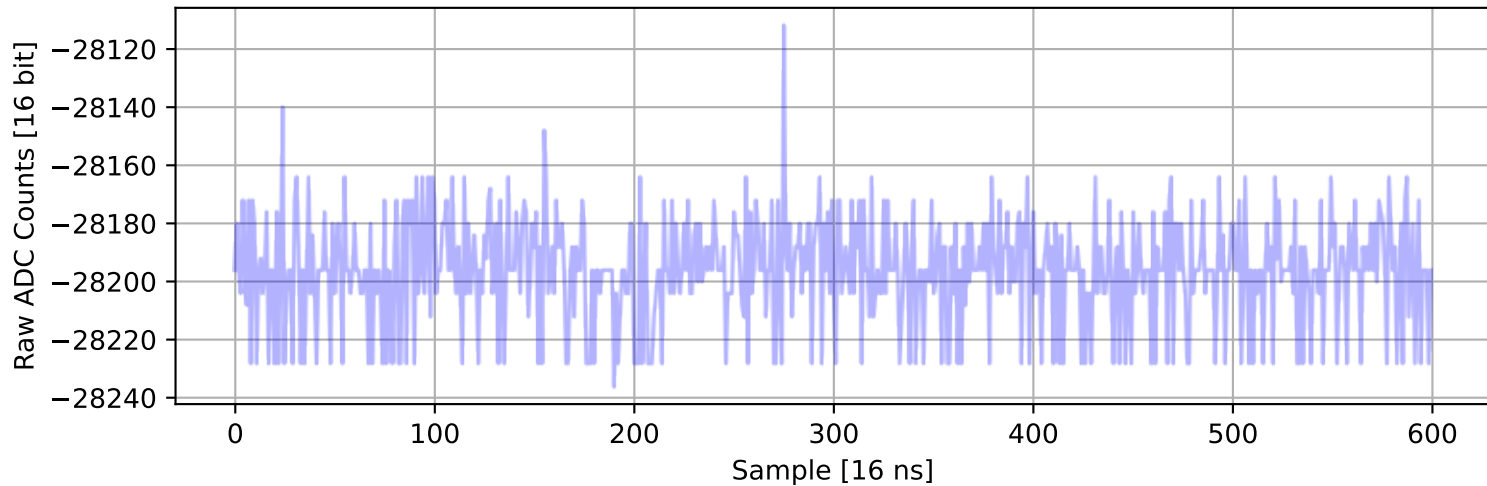
ADC 2, Channel 22, Event 23: Max Signal Waveform



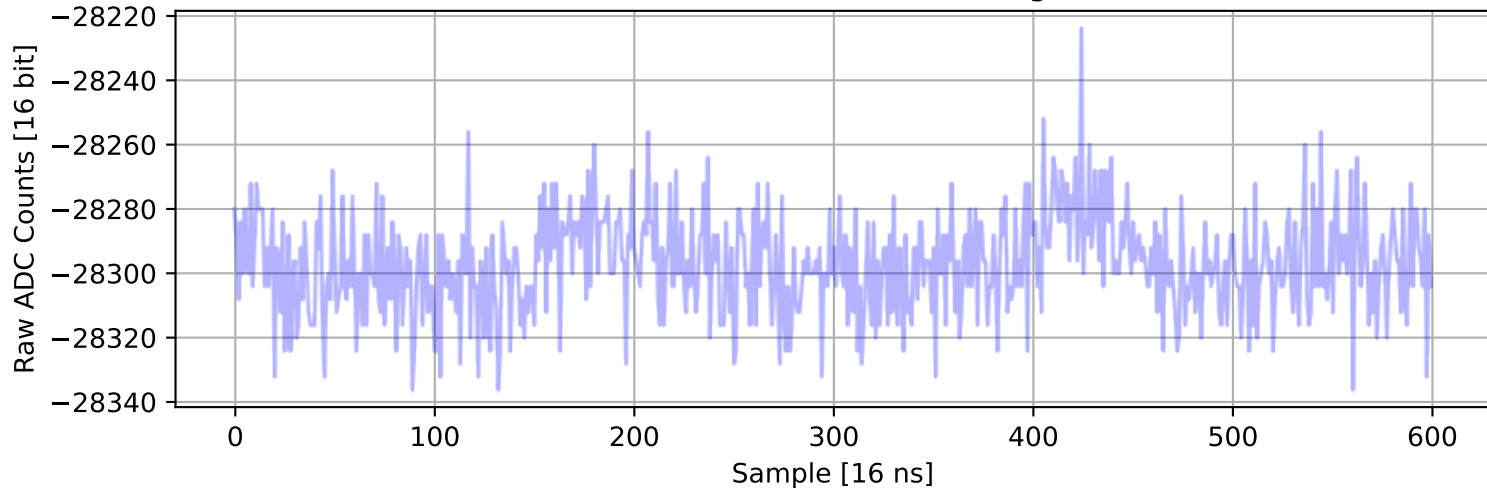
ADC 2, Channel 23, Event 656: Max Signal Waveform



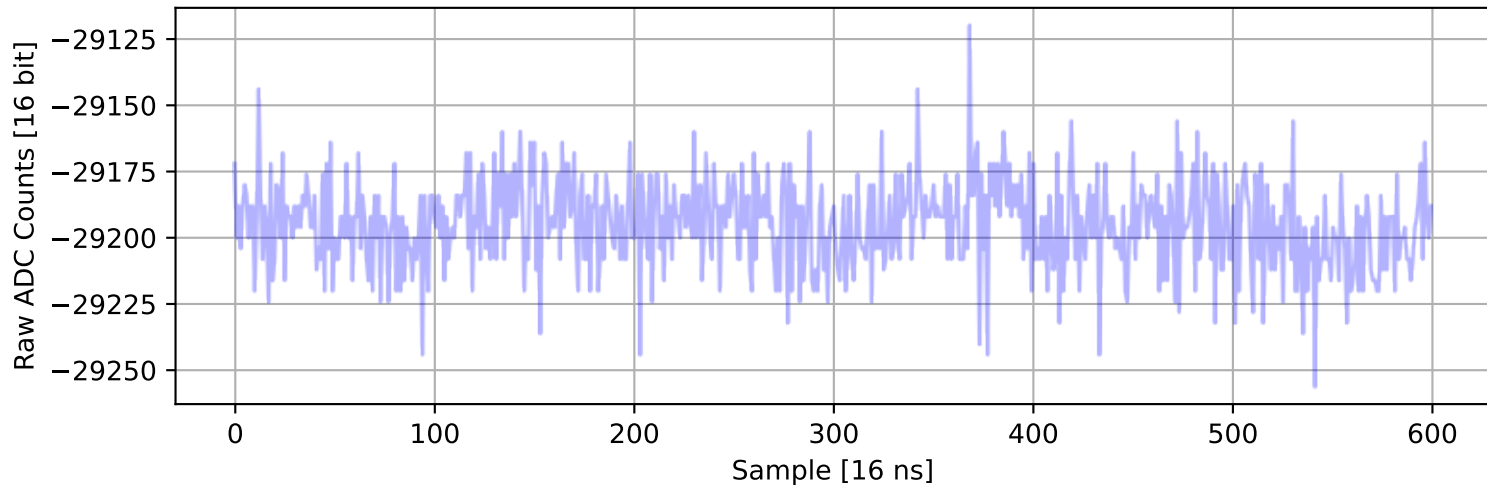
ADC 2, Channel 24, Event 1639: Max Signal Waveform



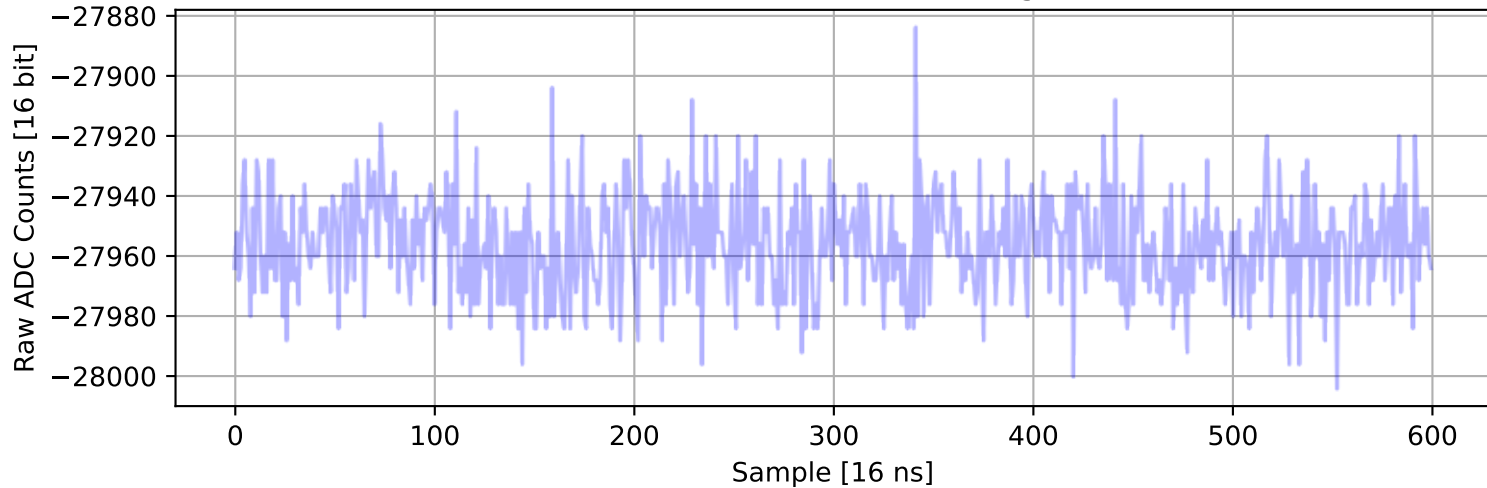
ADC 2, Channel 25, Event 1988: Max Signal Waveform



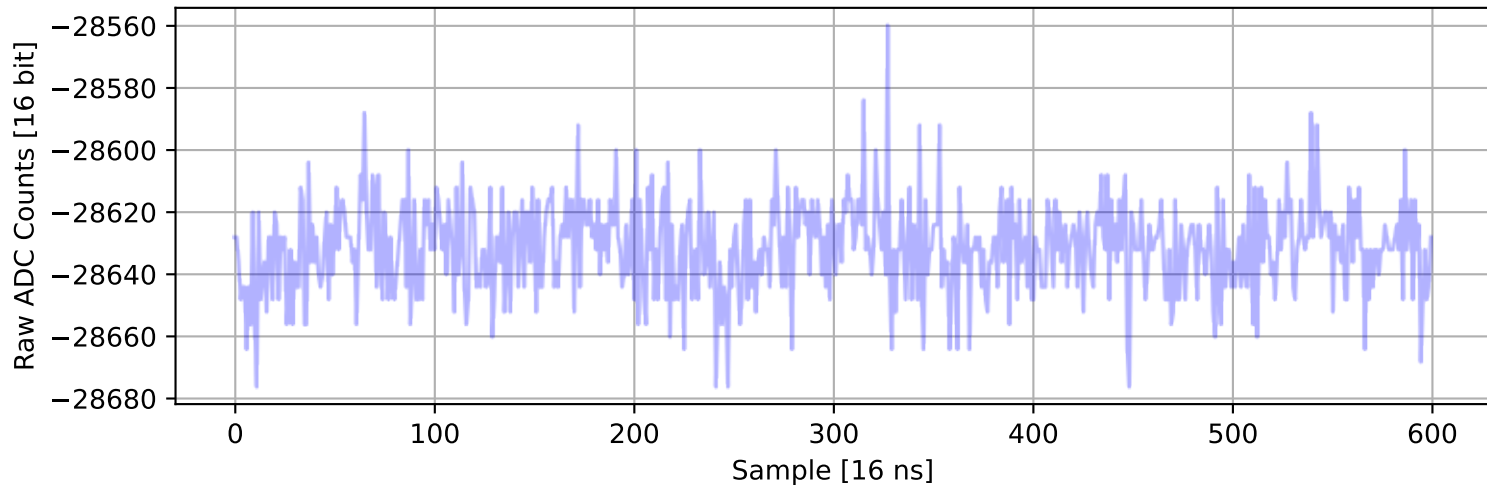
ADC 2, Channel 26, Event 142: Max Signal Waveform



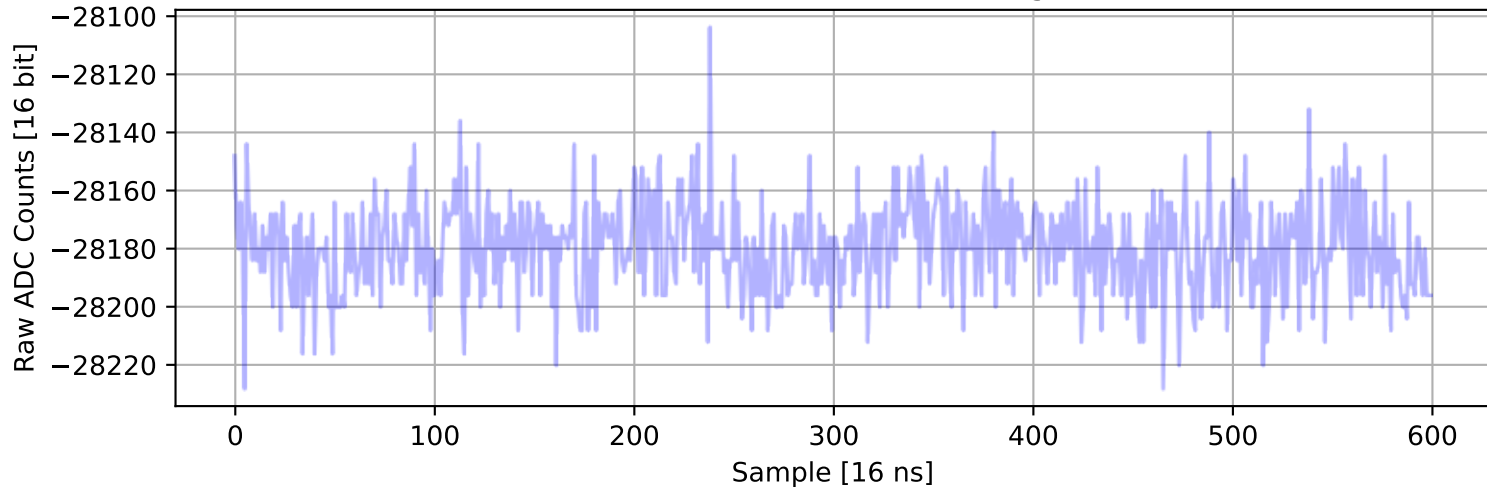
ADC 2, Channel 27, Event 738: Max Signal Waveform



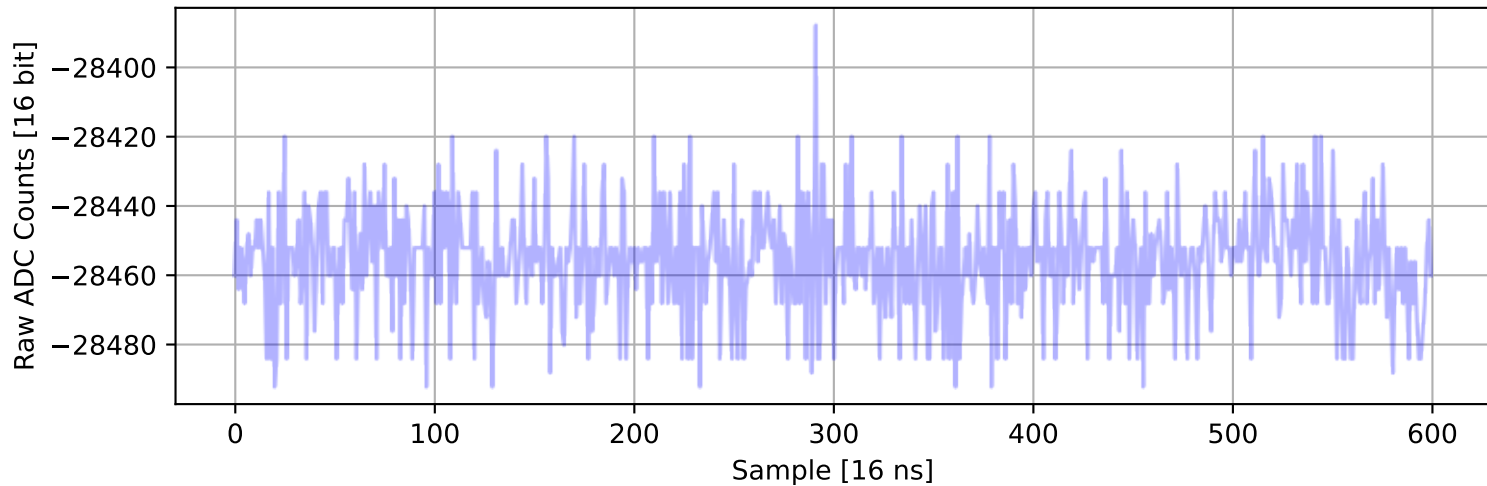
ADC 2, Channel 28, Event 23: Max Signal Waveform



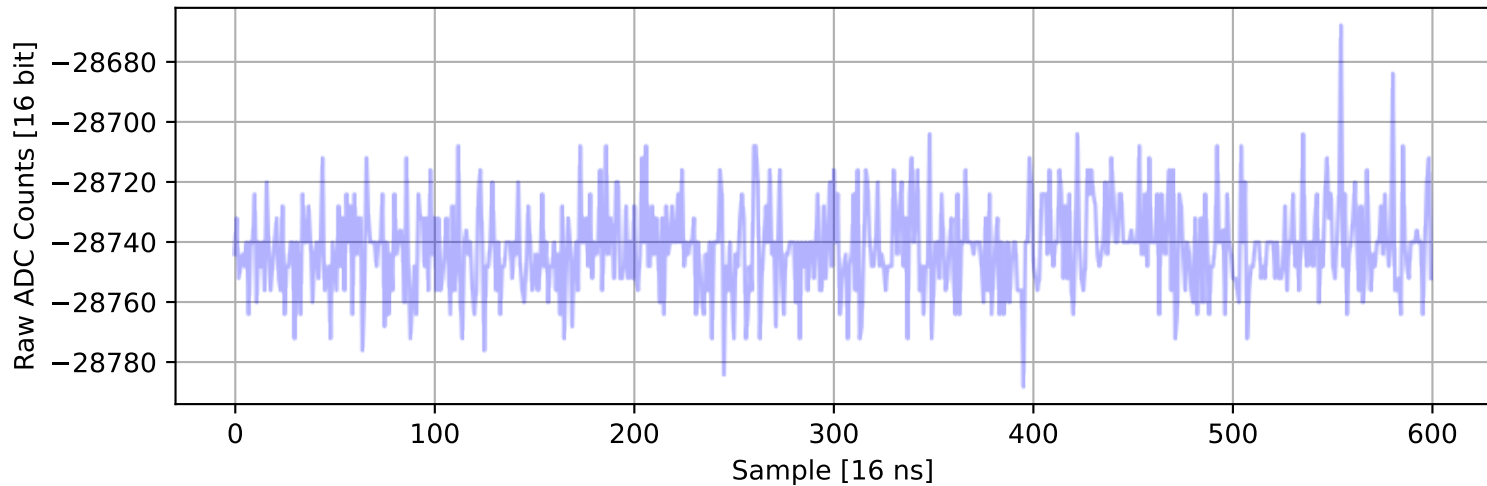
ADC 2, Channel 29, Event 1636: Max Signal Waveform



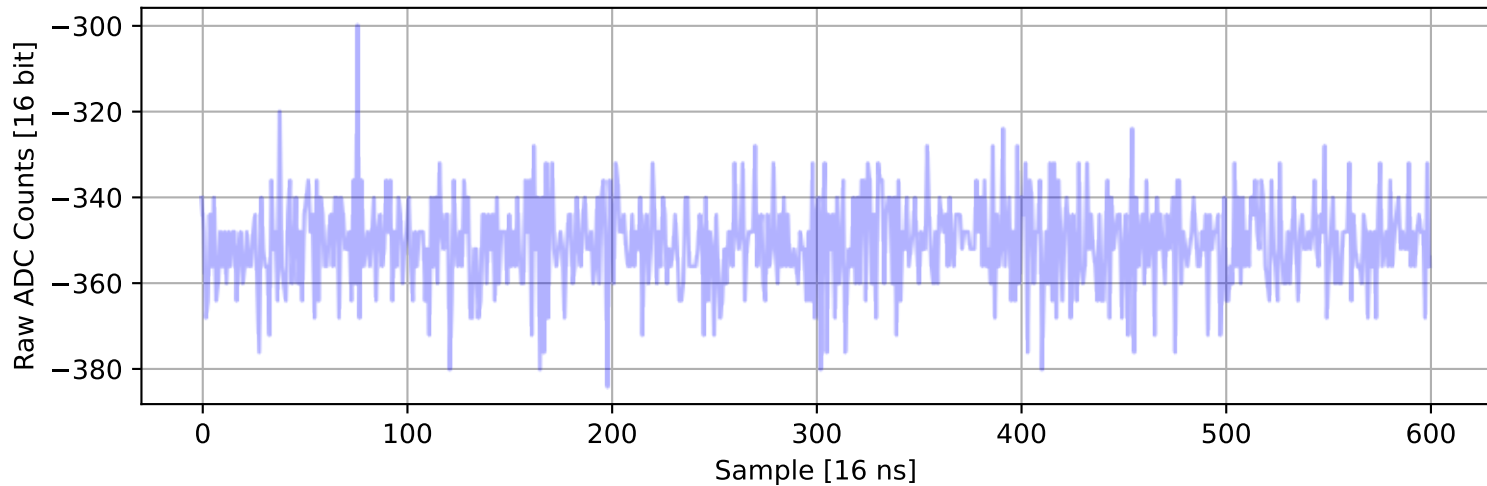
ADC 2, Channel 30, Event 634: Max Signal Waveform



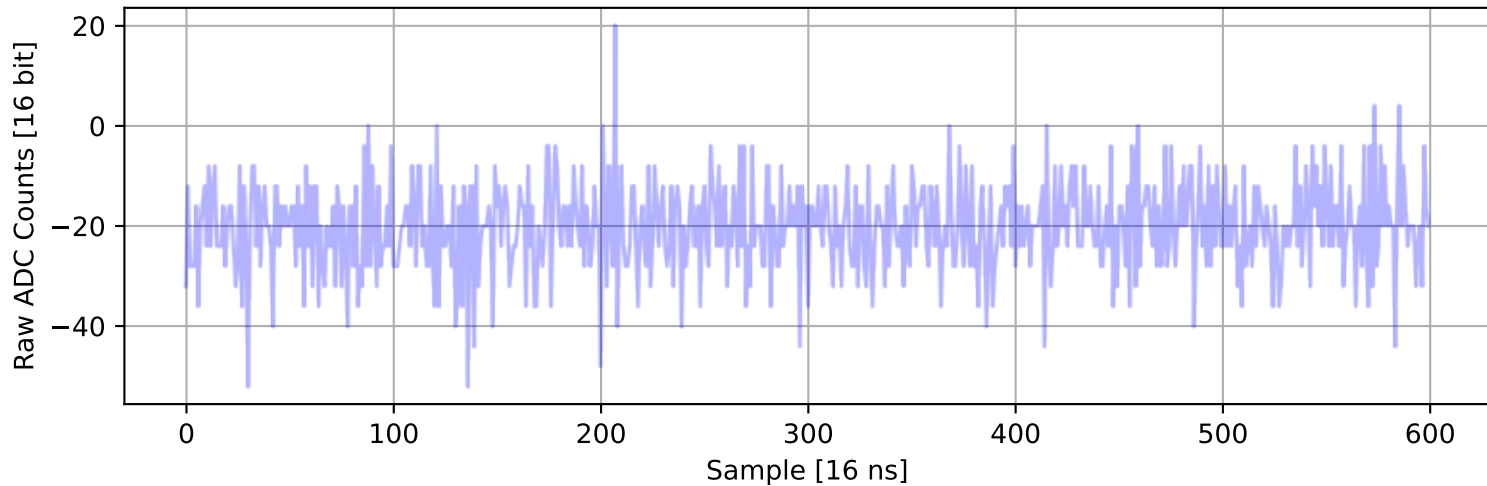
ADC 2, Channel 31, Event 2759: Max Signal Waveform



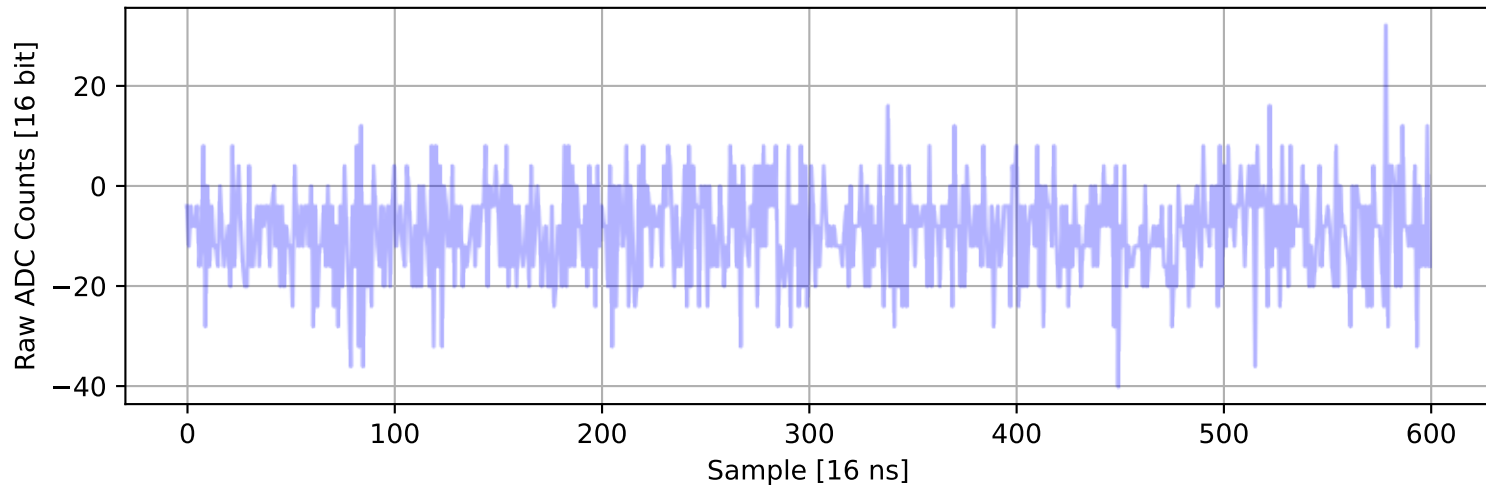
ADC 2, Channel 32, Event 480: Max Signal Waveform



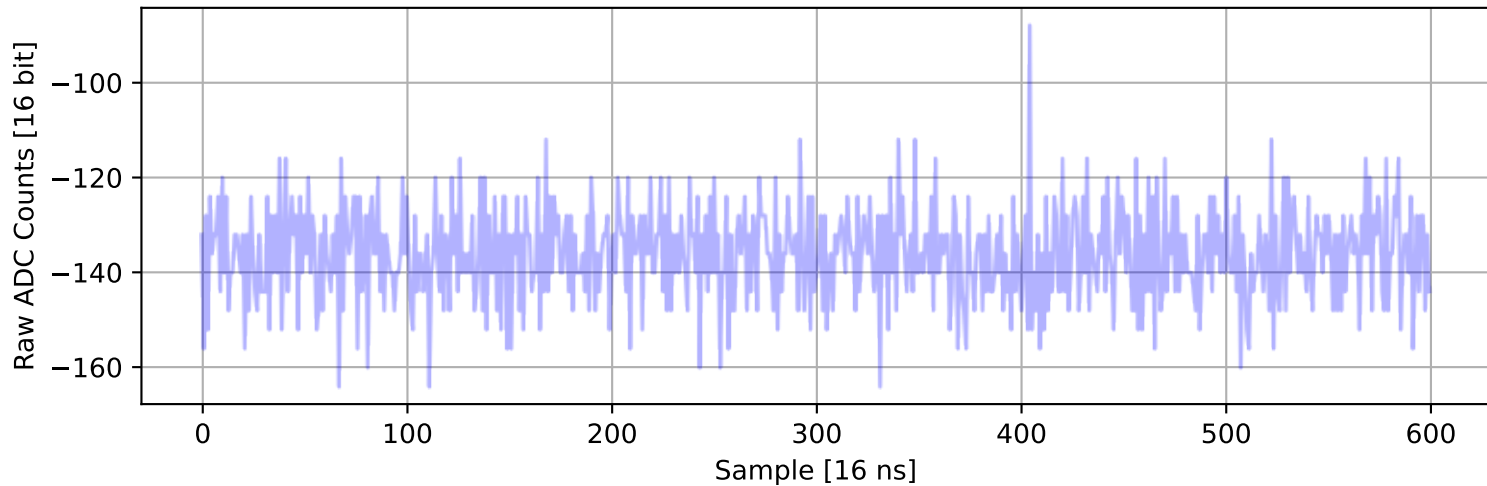
ADC 2, Channel 33, Event 2376: Max Signal Waveform



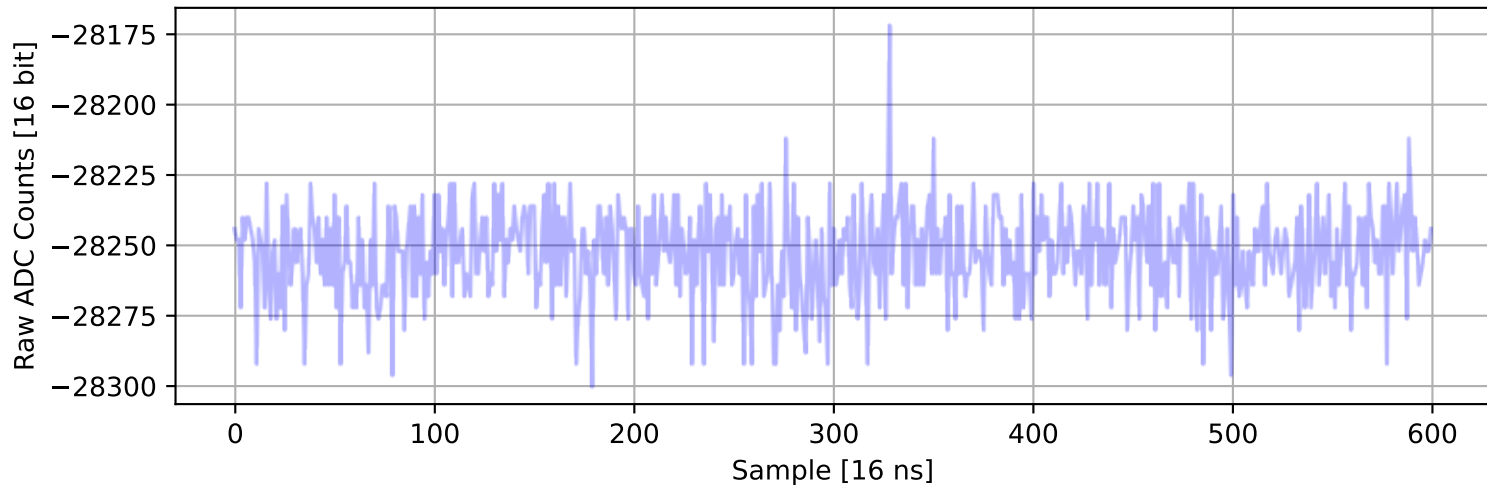
ADC 2, Channel 34, Event 449: Max Signal Waveform



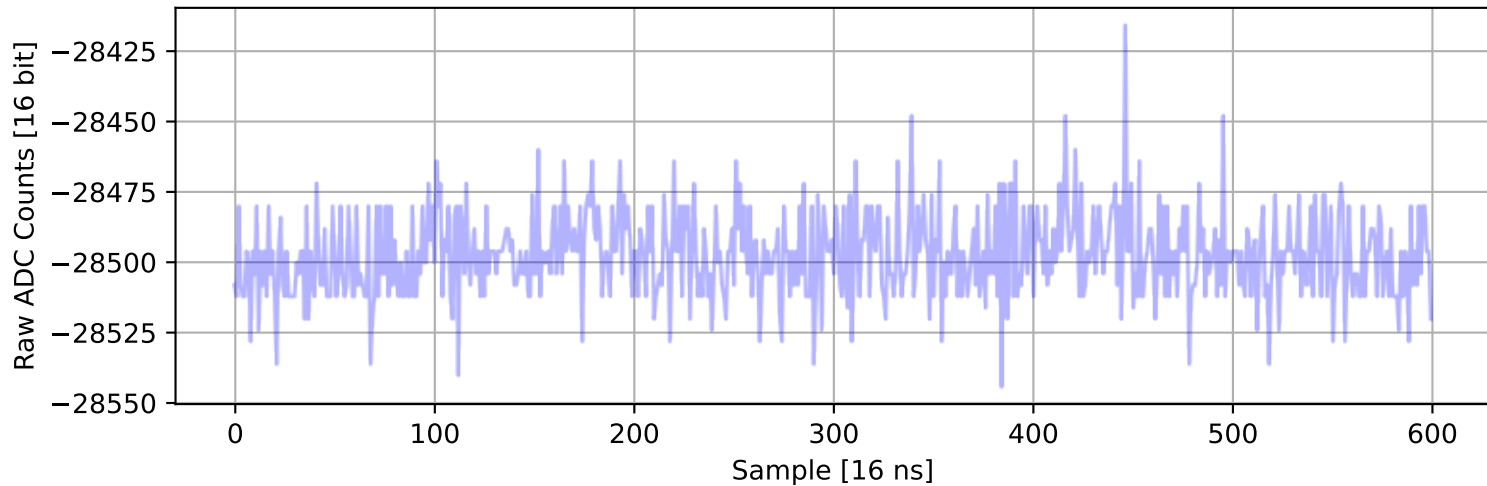
ADC 2, Channel 35, Event 585: Max Signal Waveform



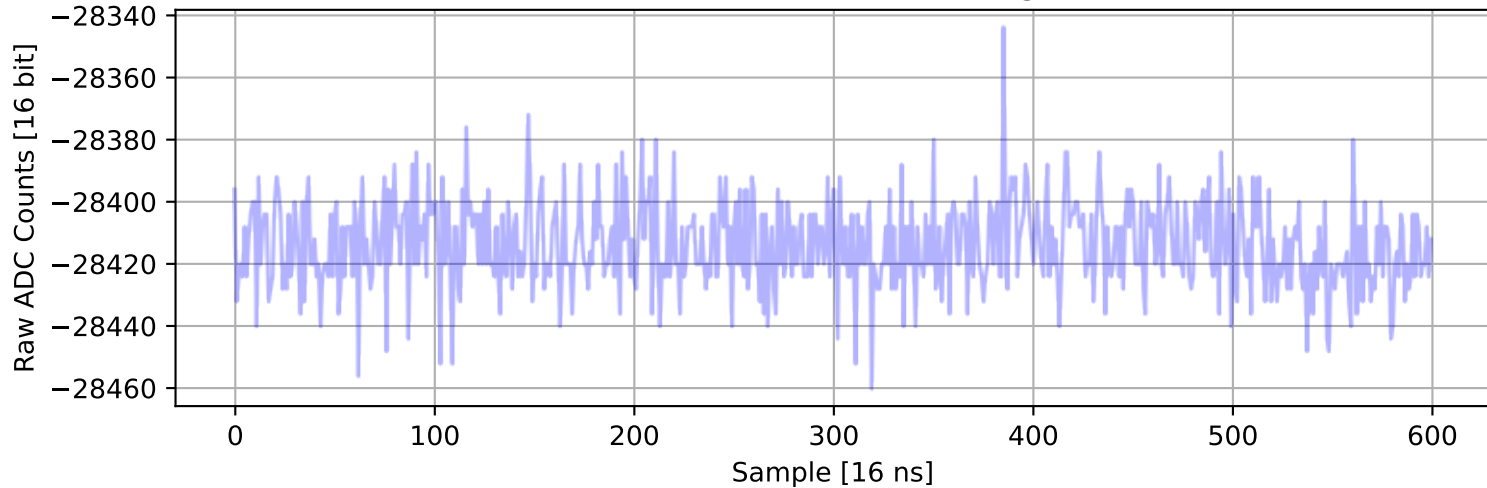
ADC 2, Channel 36, Event 1028: Max Signal Waveform



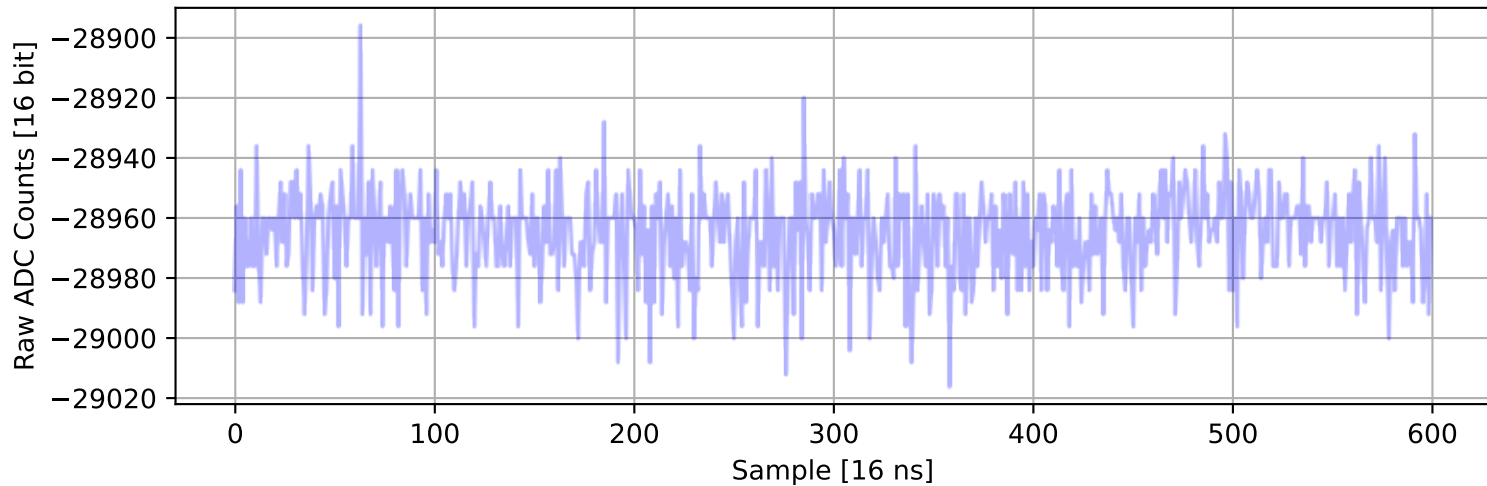
ADC 2, Channel 37, Event 388: Max Signal Waveform



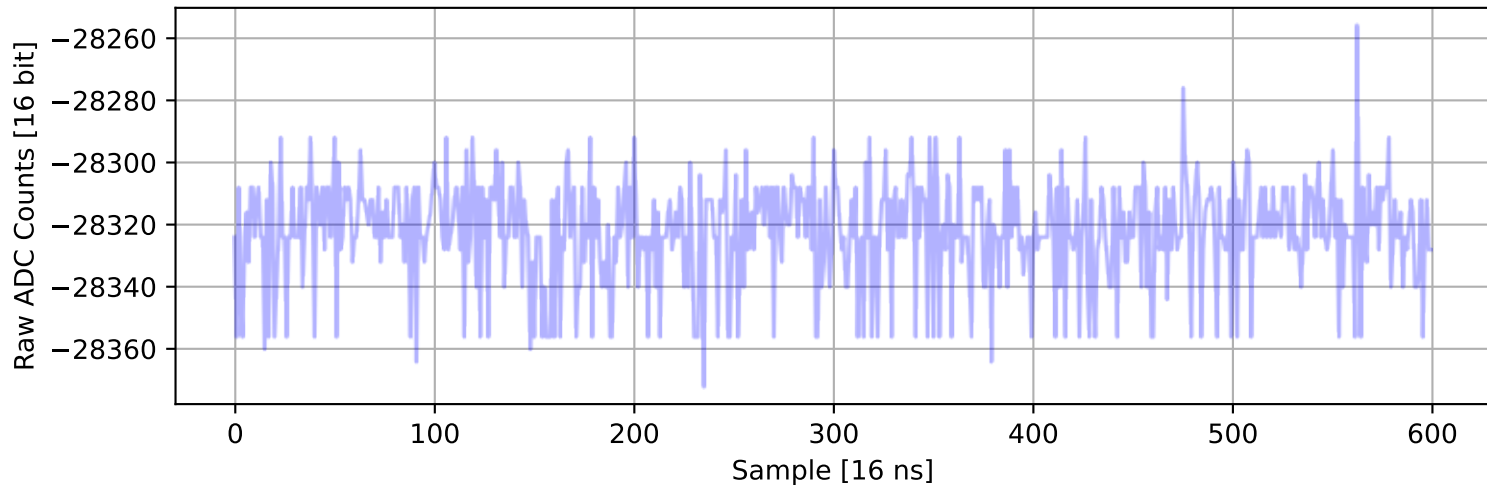
ADC 2, Channel 38, Event 739: Max Signal Waveform



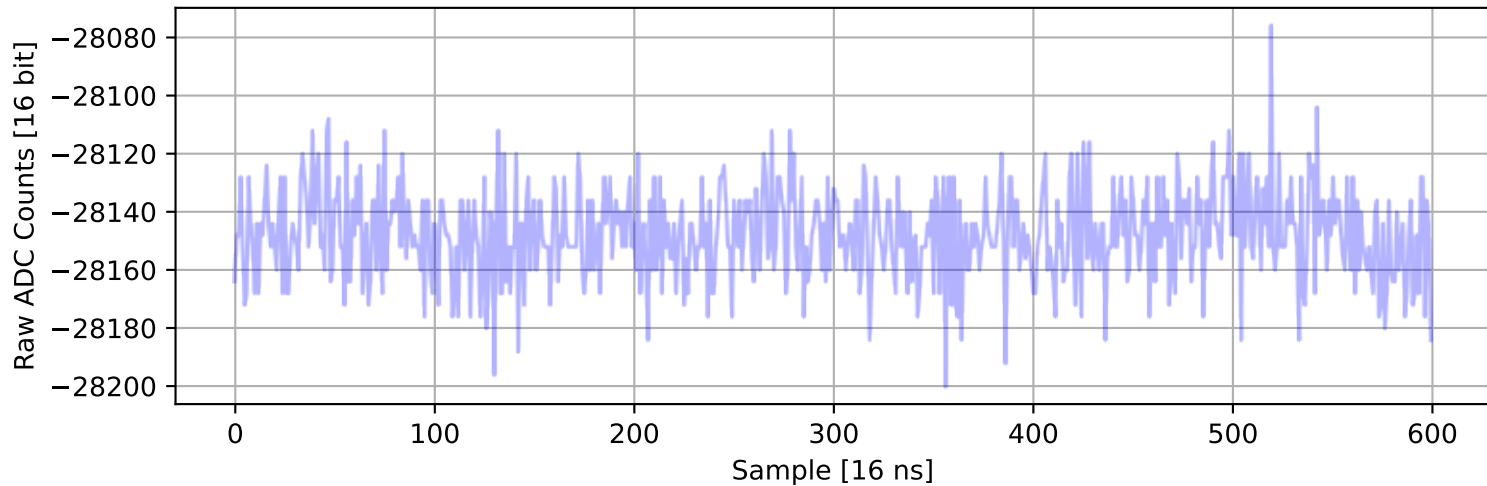
ADC 2, Channel 39, Event 243: Max Signal Waveform



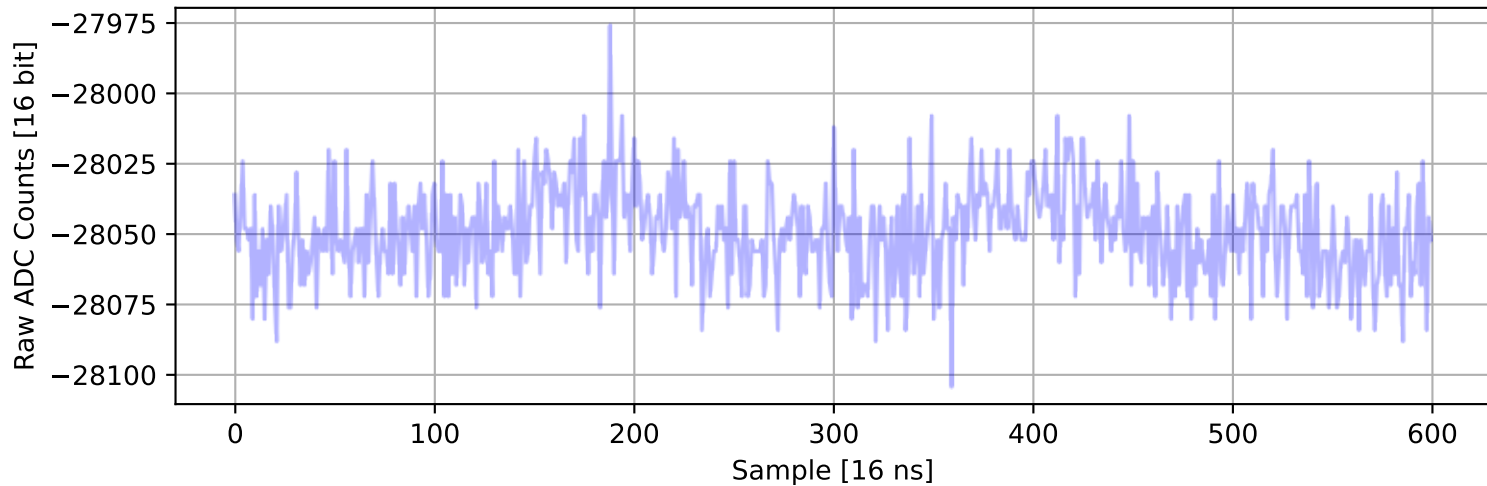
ADC 2, Channel 40, Event 2574: Max Signal Waveform



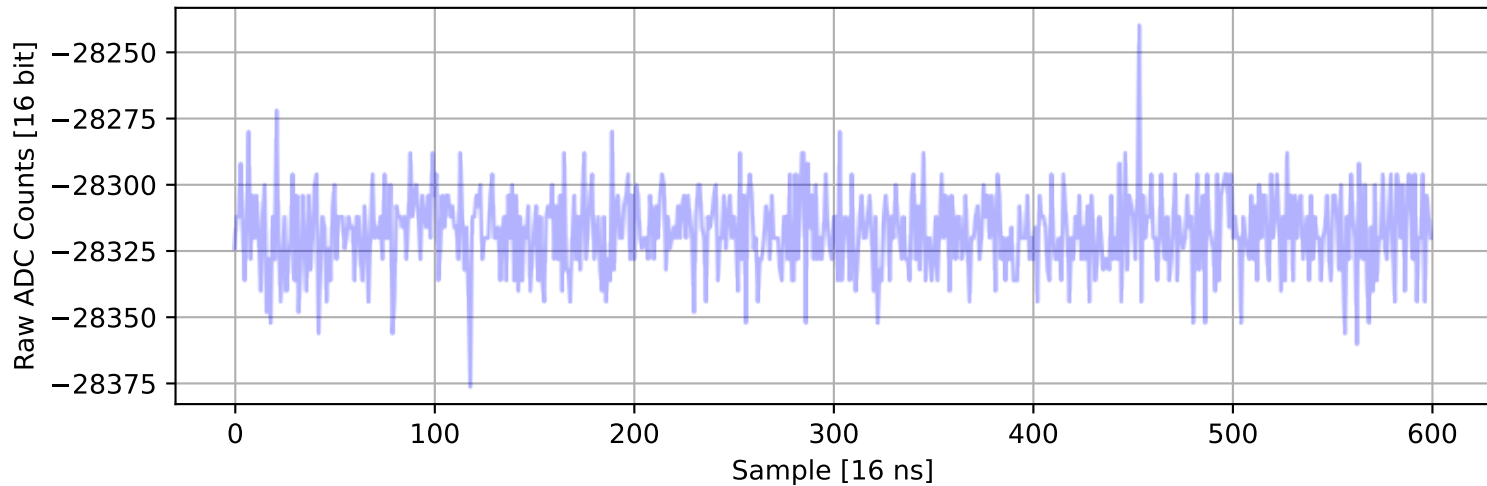
ADC 2, Channel 41, Event 2749: Max Signal Waveform



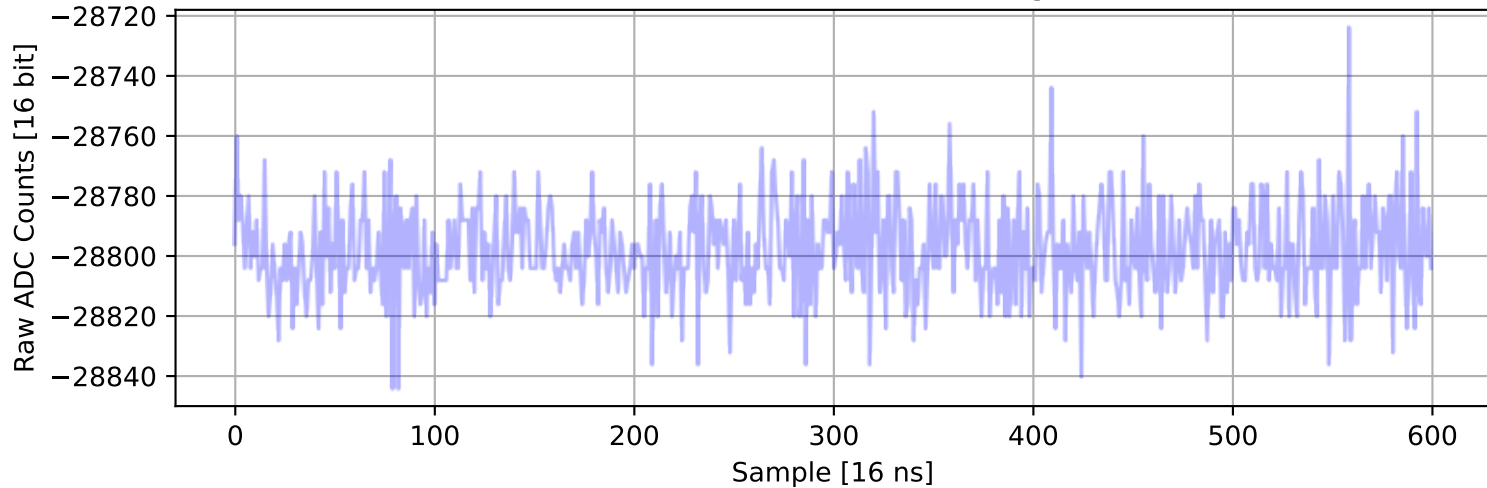
ADC 2, Channel 42, Event 197: Max Signal Waveform



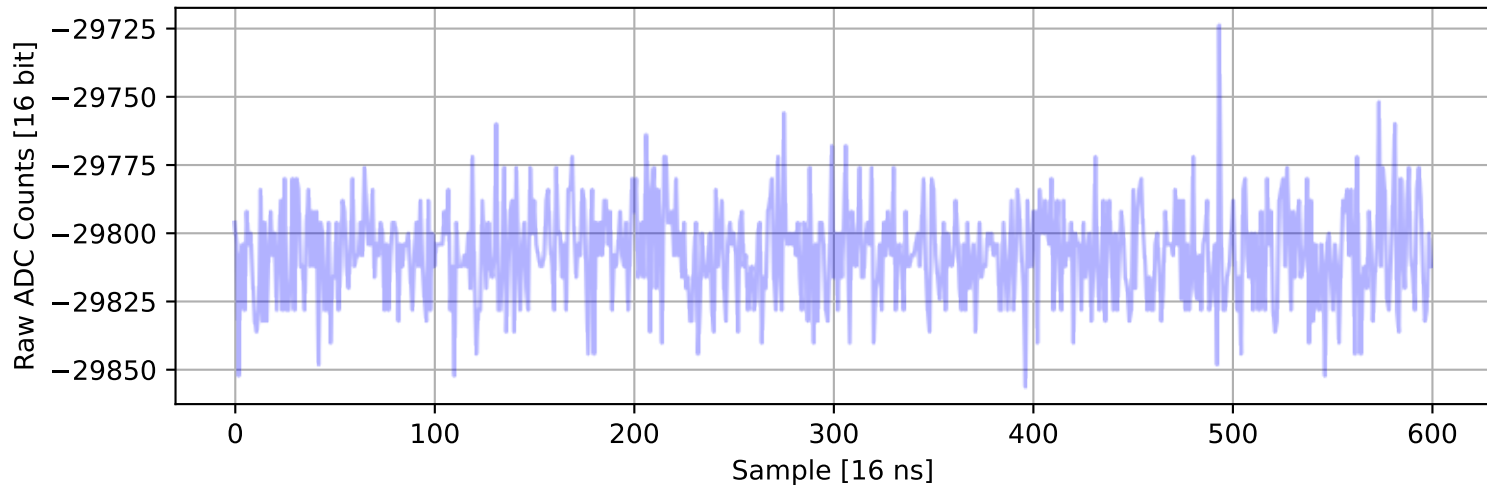
ADC 2, Channel 43, Event 657: Max Signal Waveform



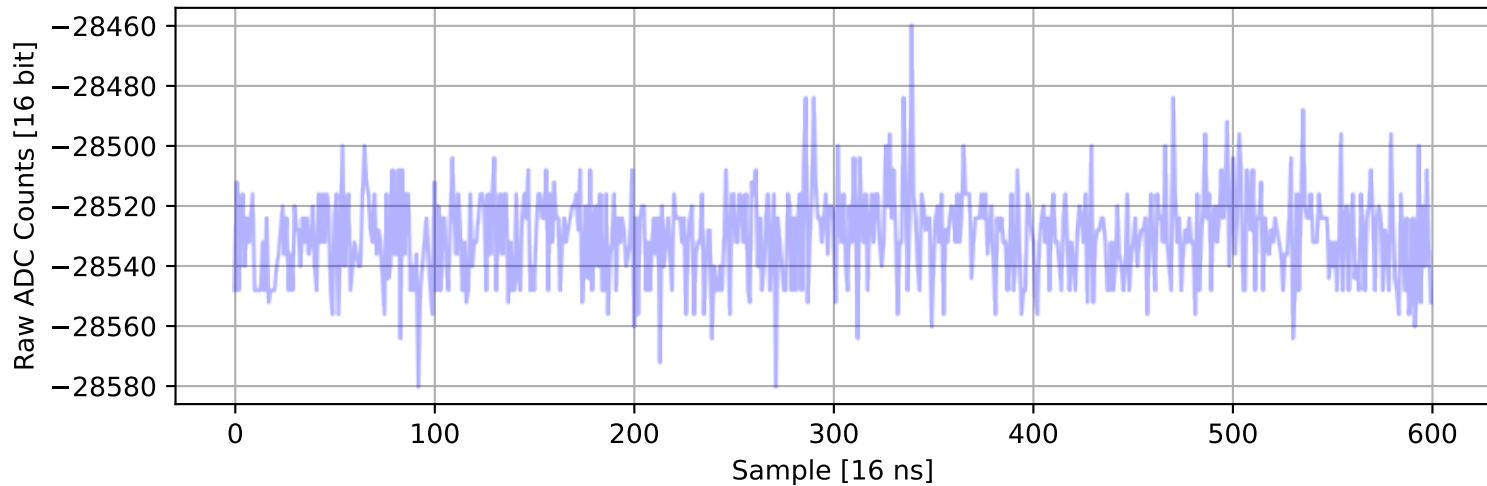
ADC 2, Channel 44, Event 2114: Max Signal Waveform



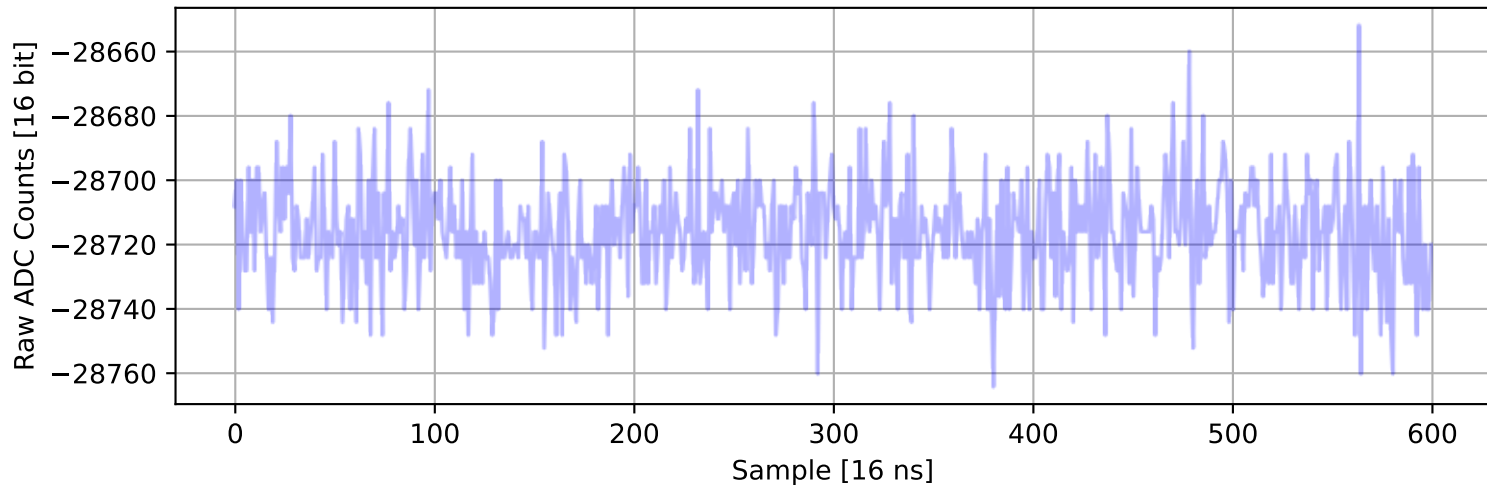
ADC 2, Channel 45, Event 2461: Max Signal Waveform



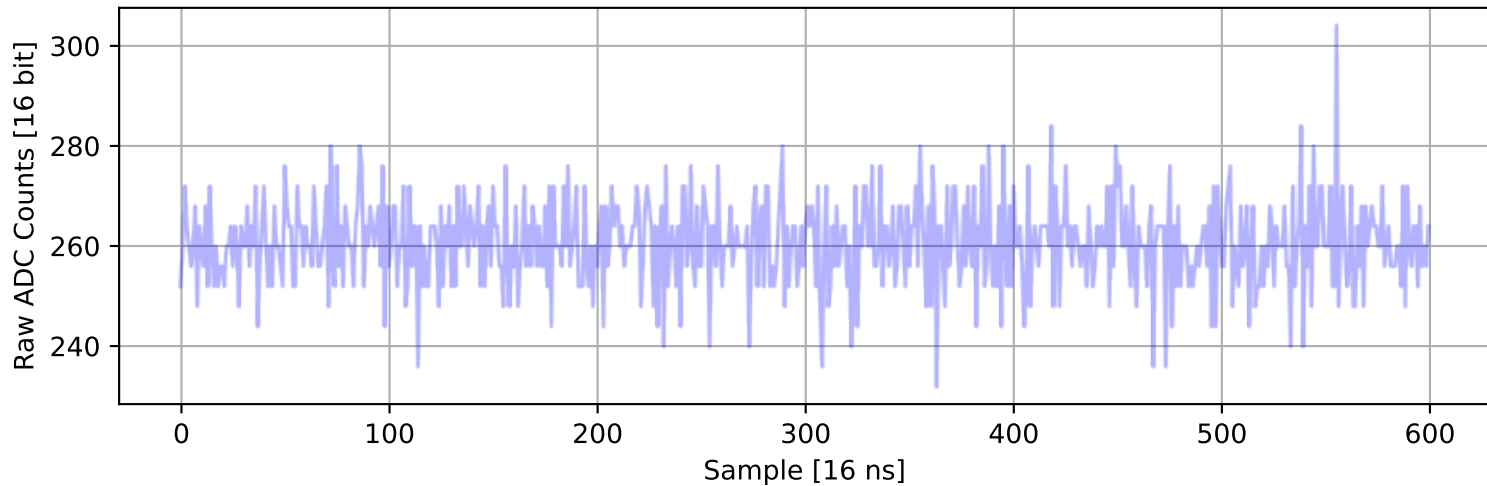
ADC 2, Channel 46, Event 2574: Max Signal Waveform



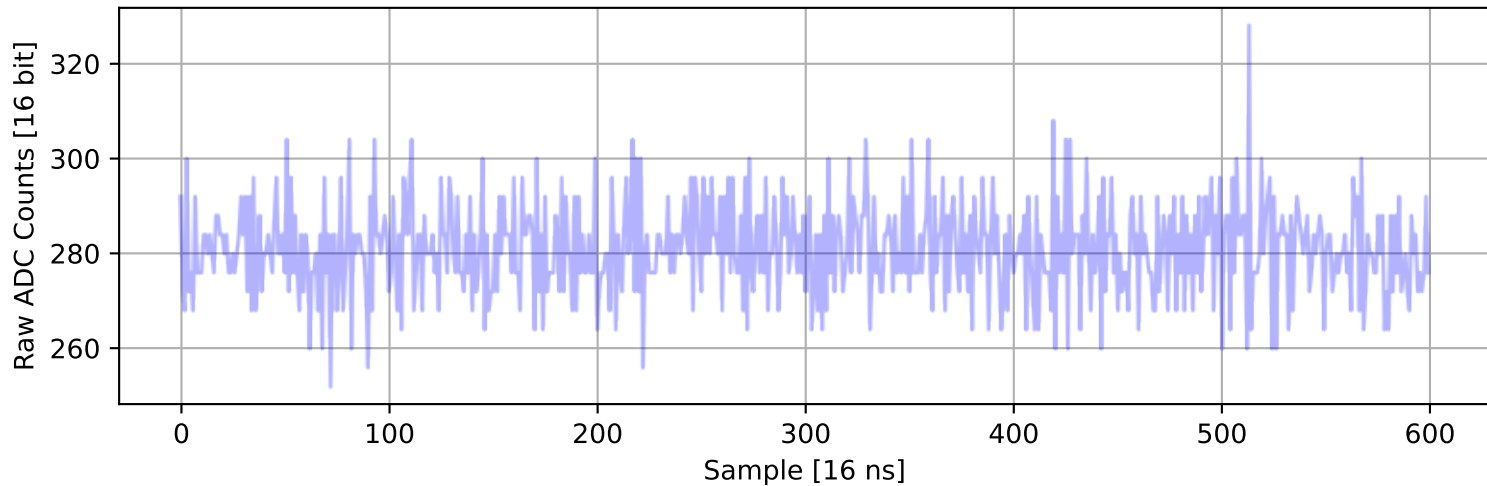
ADC 2, Channel 47, Event 403: Max Signal Waveform



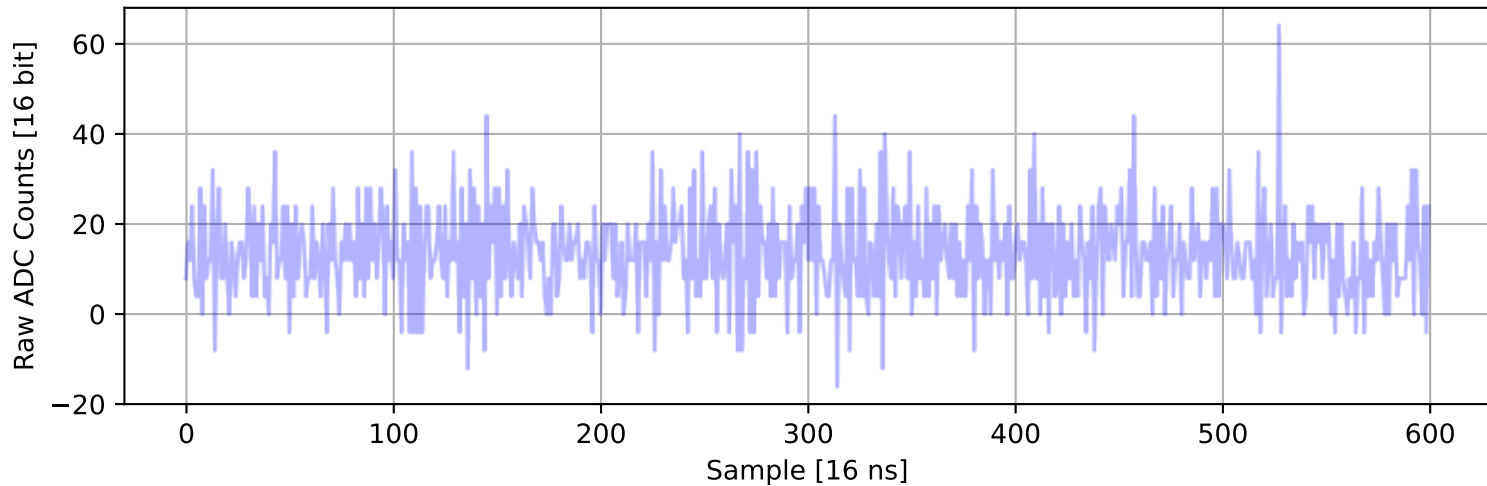
ADC 2, Channel 48, Event 1040: Max Signal Waveform



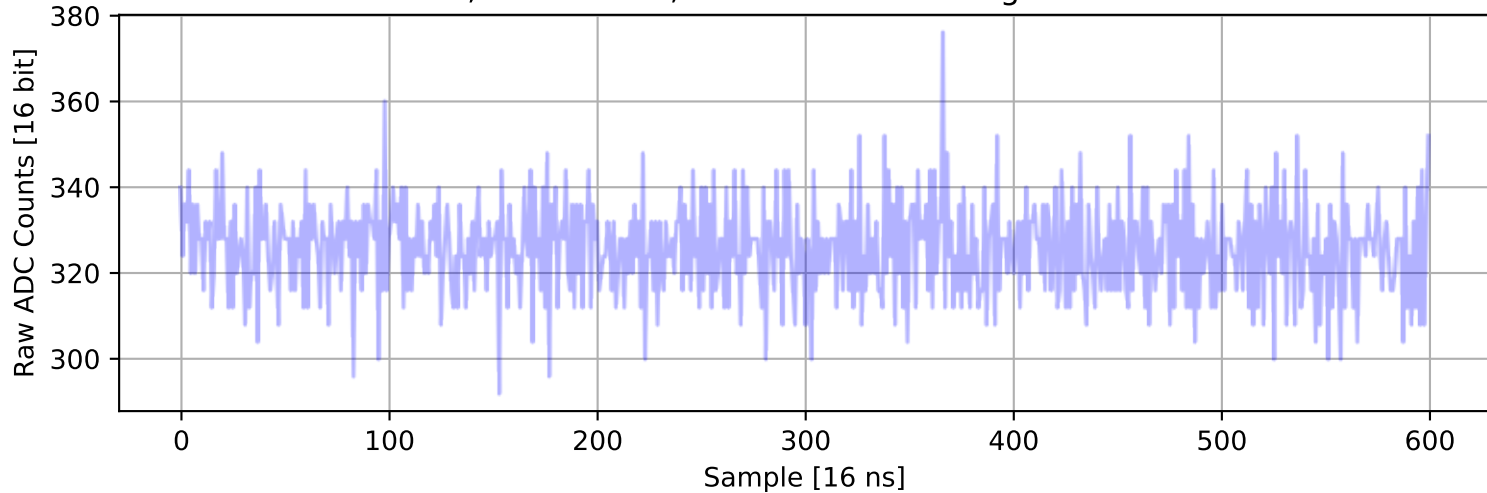
ADC 2, Channel 49, Event 501: Max Signal Waveform



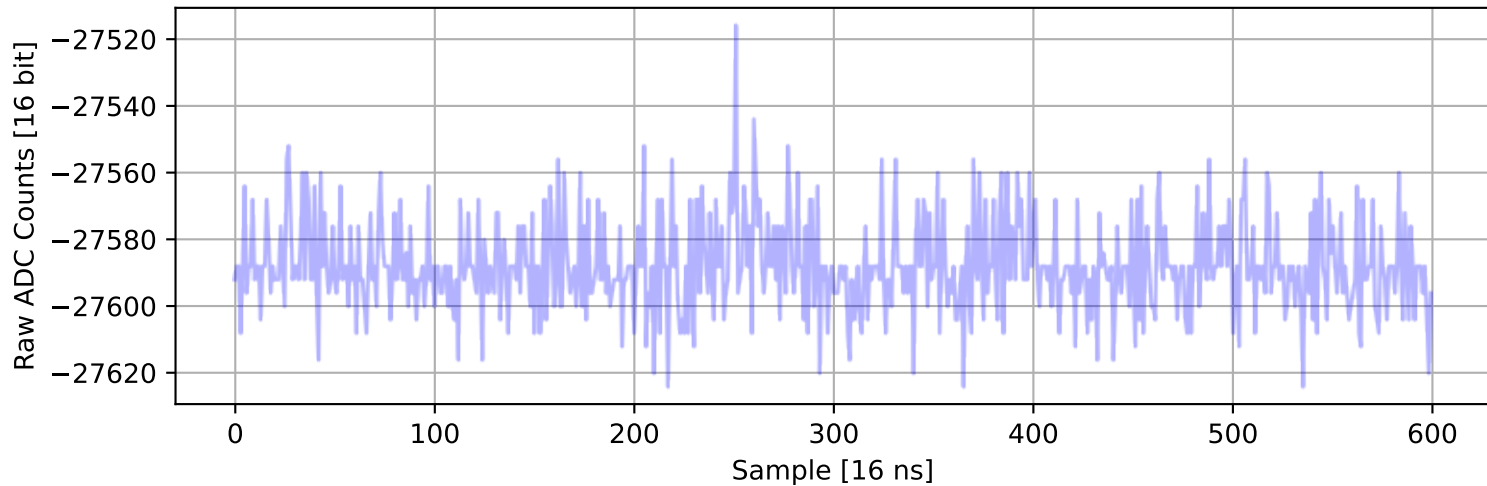
ADC 2, Channel 50, Event 2123: Max Signal Waveform



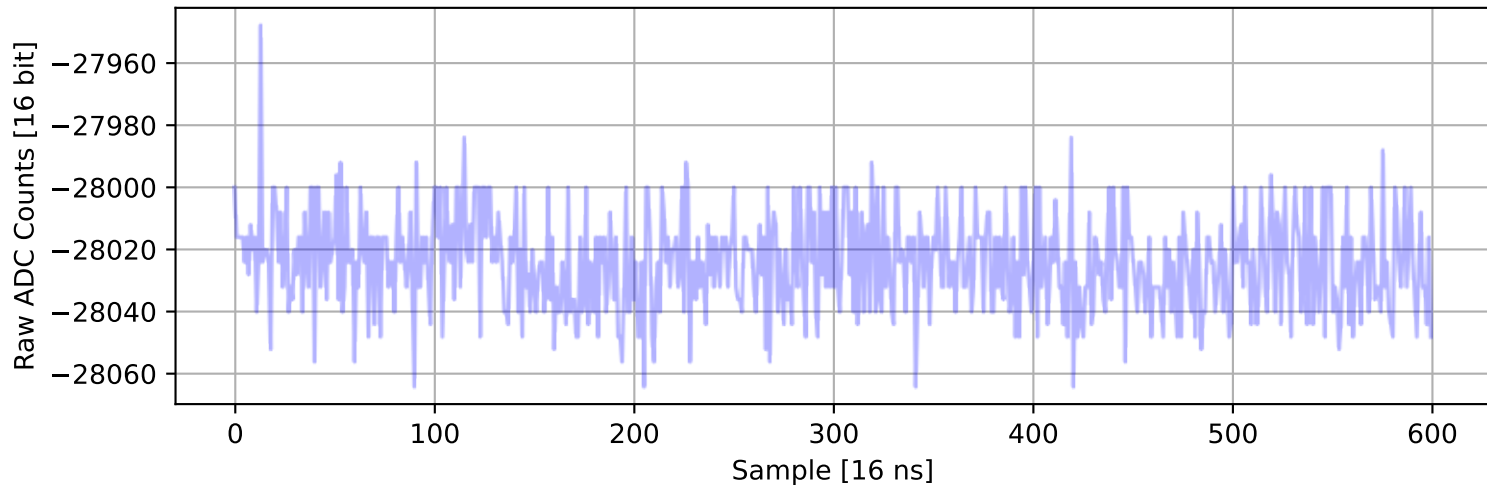
ADC 2, Channel 51, Event 1033: Max Signal Waveform



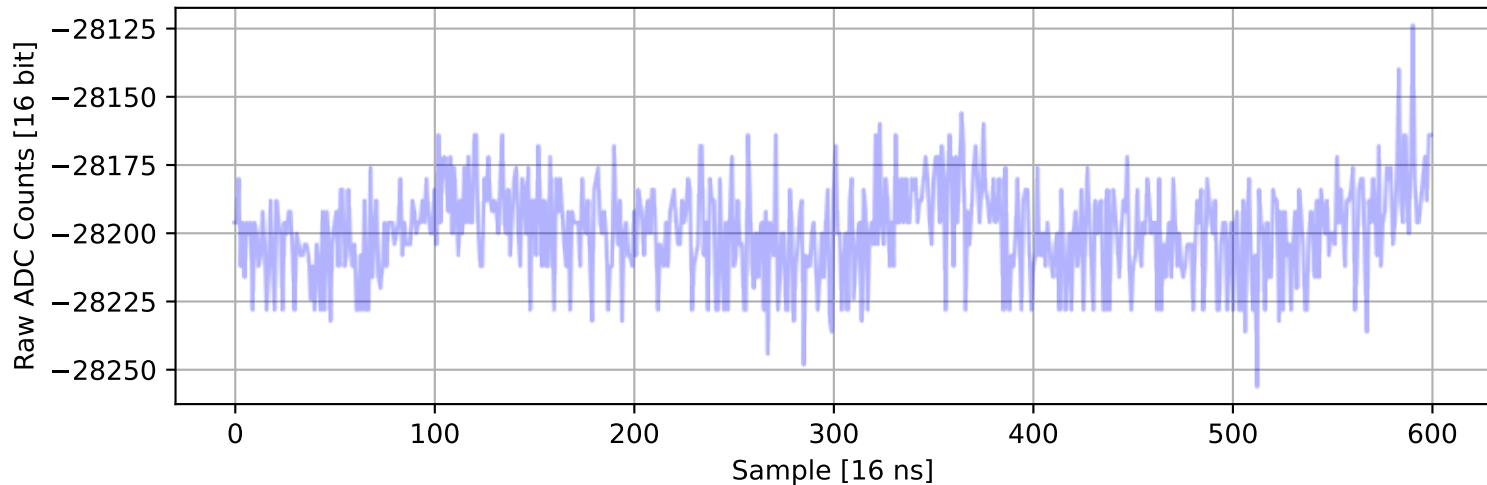
ADC 2, Channel 52, Event 1554: Max Signal Waveform



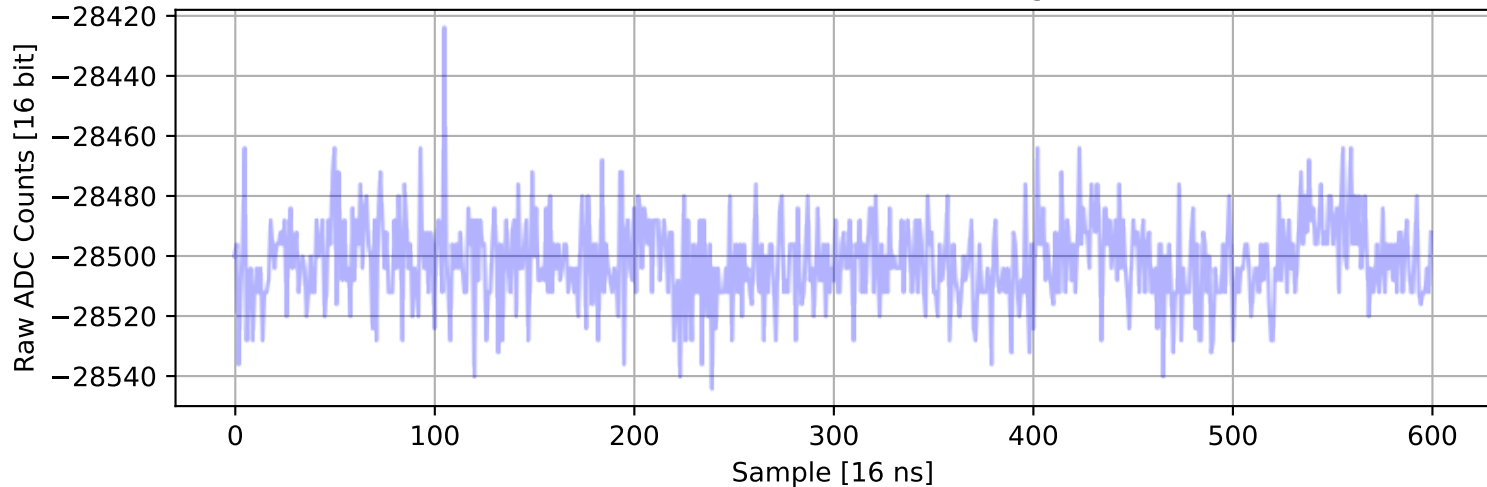
ADC 2, Channel 53, Event 1377: Max Signal Waveform



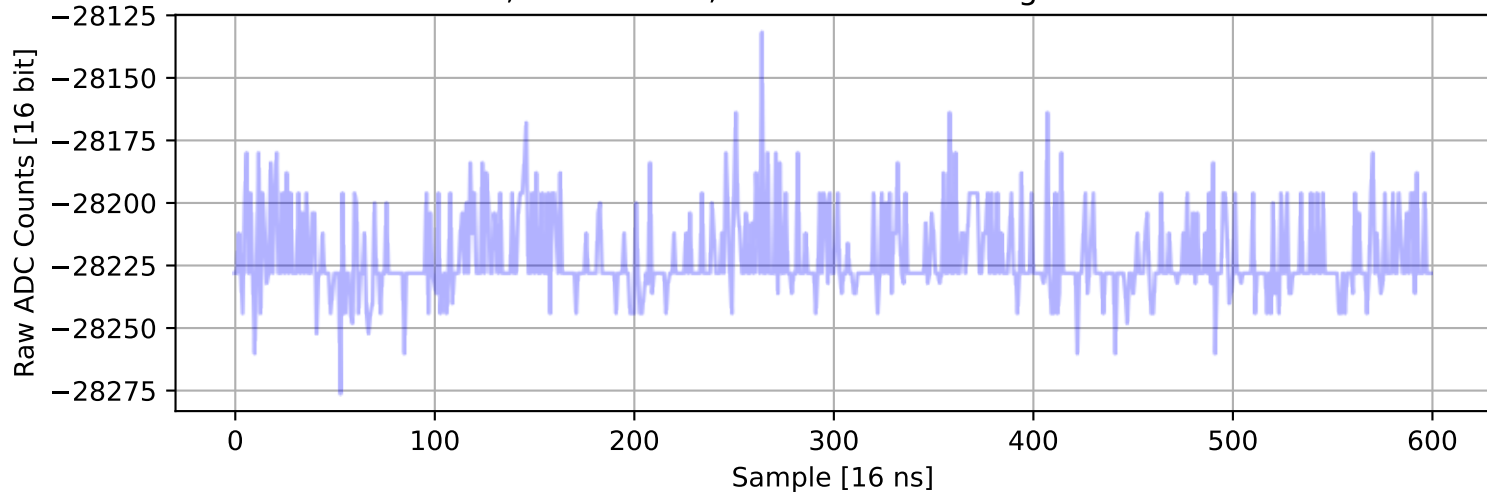
ADC 2, Channel 54, Event 1493: Max Signal Waveform



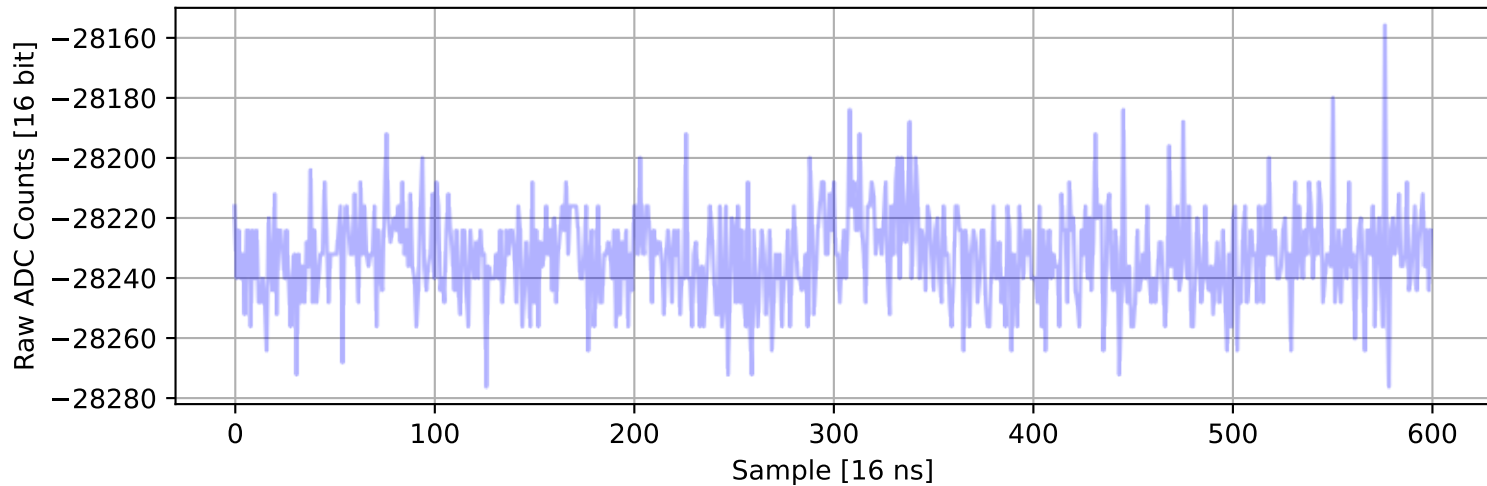
ADC 2, Channel 55, Event 2250: Max Signal Waveform



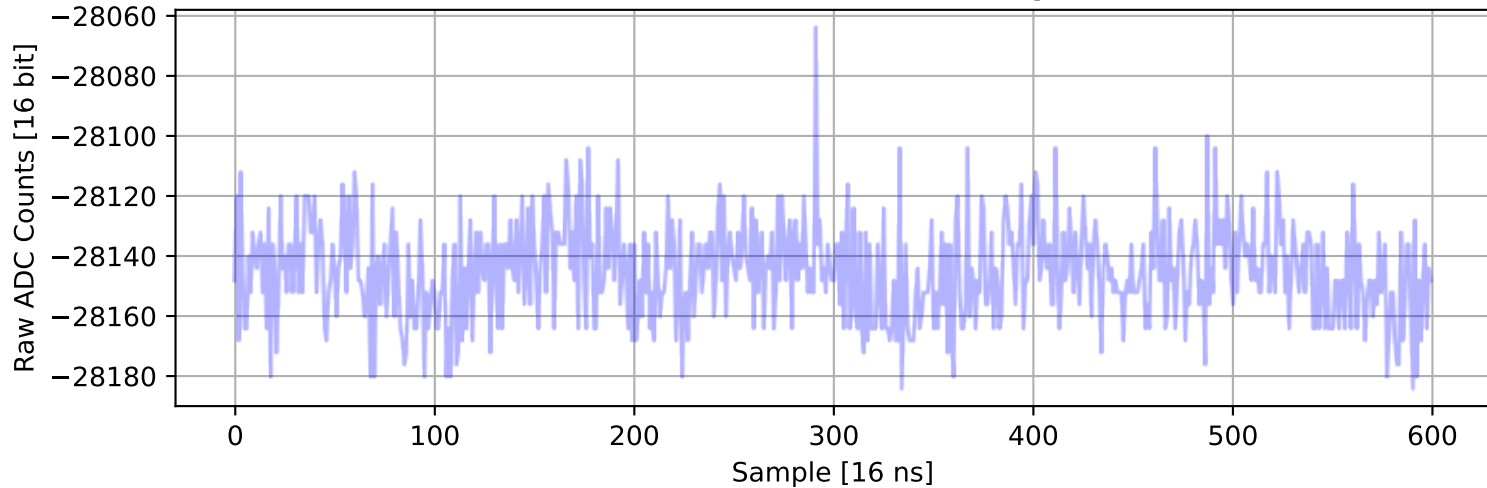
ADC 2, Channel 56, Event 675: Max Signal Waveform



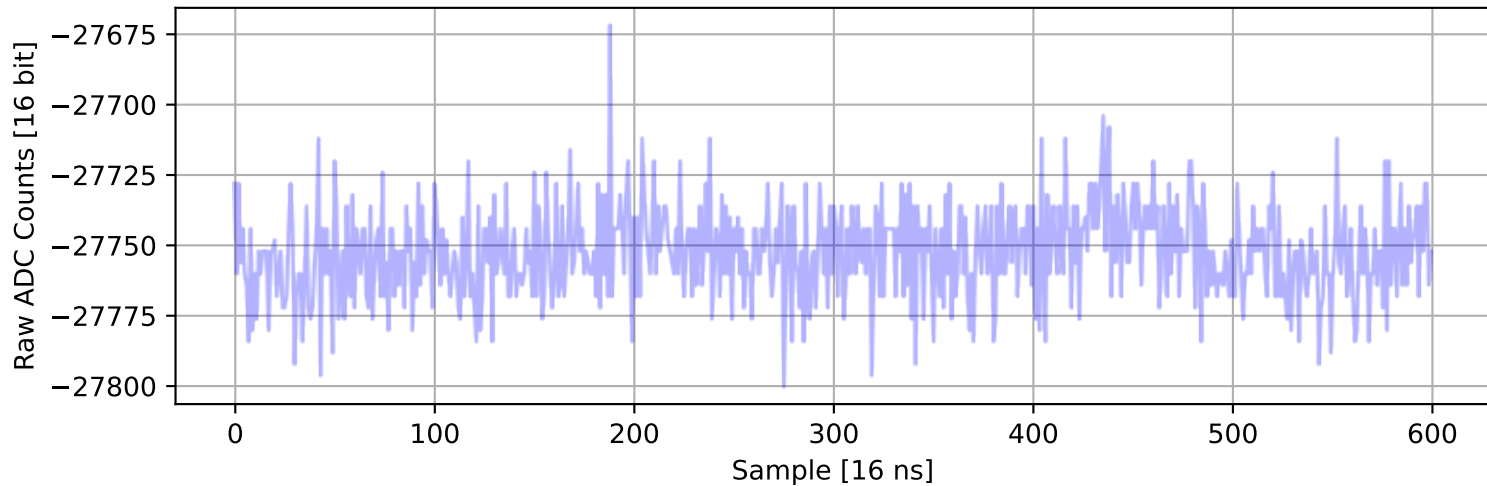
ADC 2, Channel 57, Event 867: Max Signal Waveform



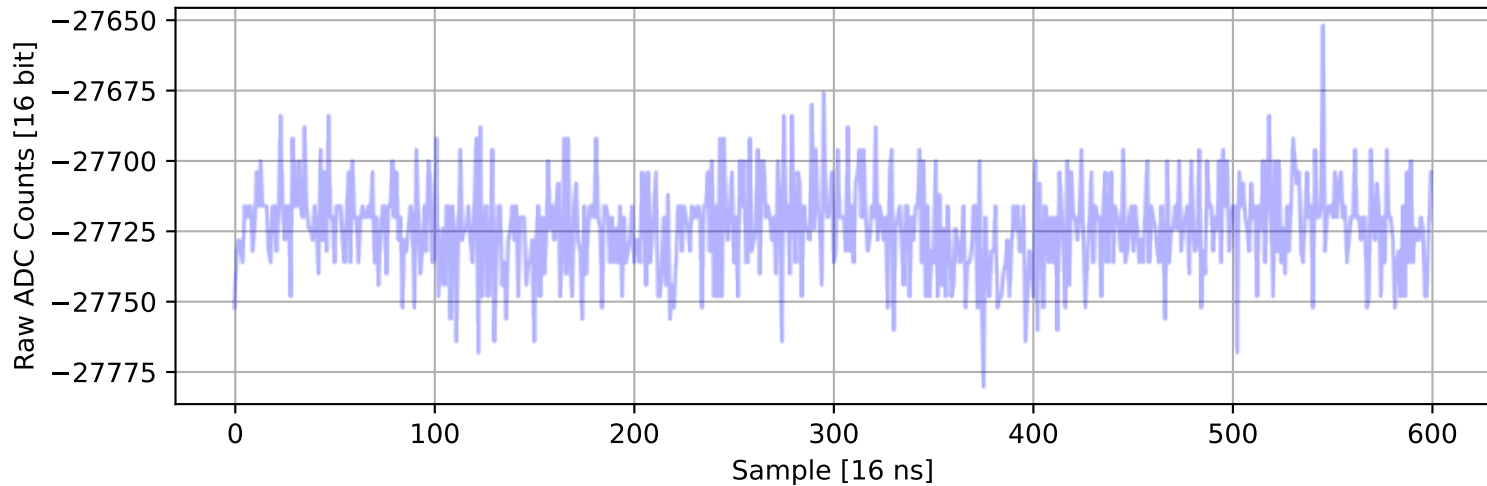
ADC 2, Channel 58, Event 2909: Max Signal Waveform



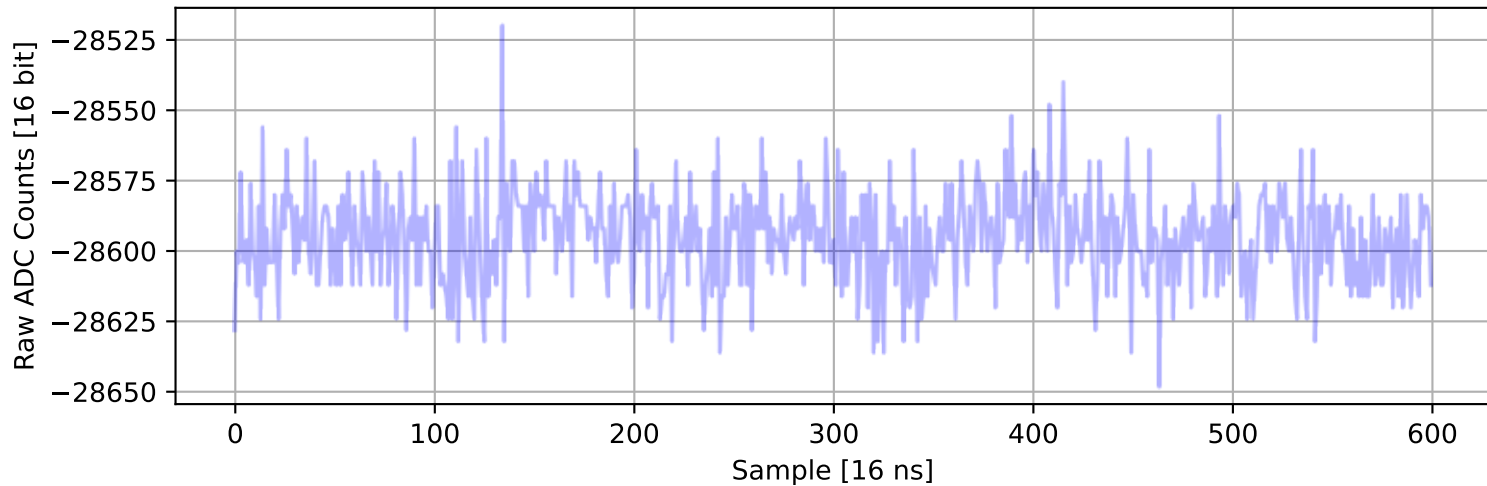
ADC 2, Channel 59, Event 1589: Max Signal Waveform



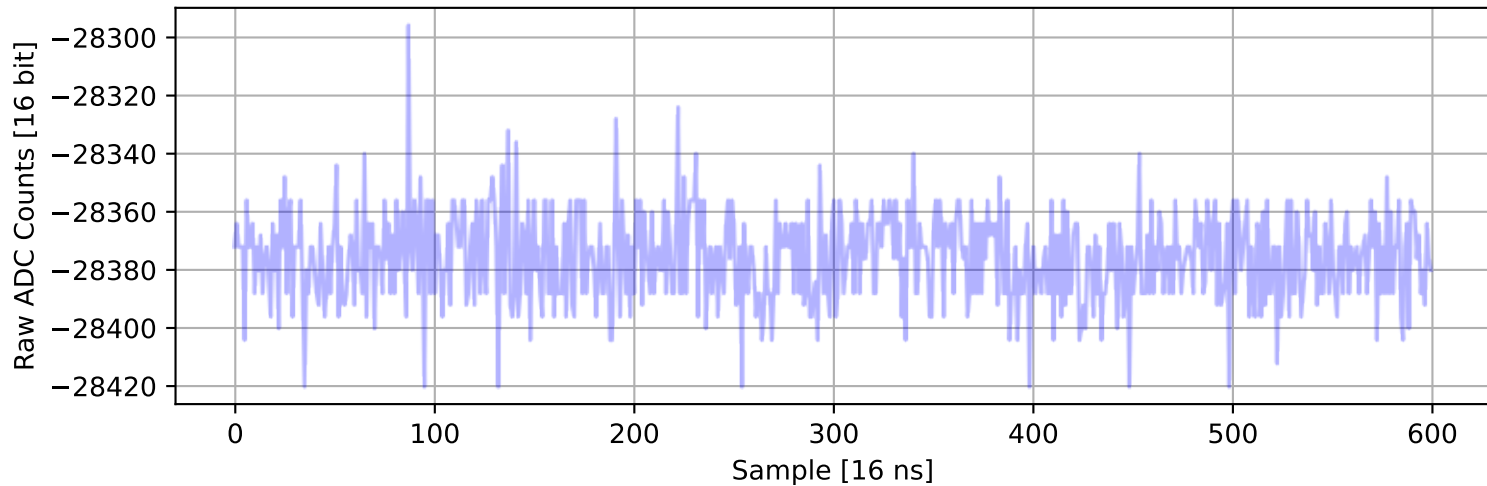
ADC 2, Channel 60, Event 1143: Max Signal Waveform



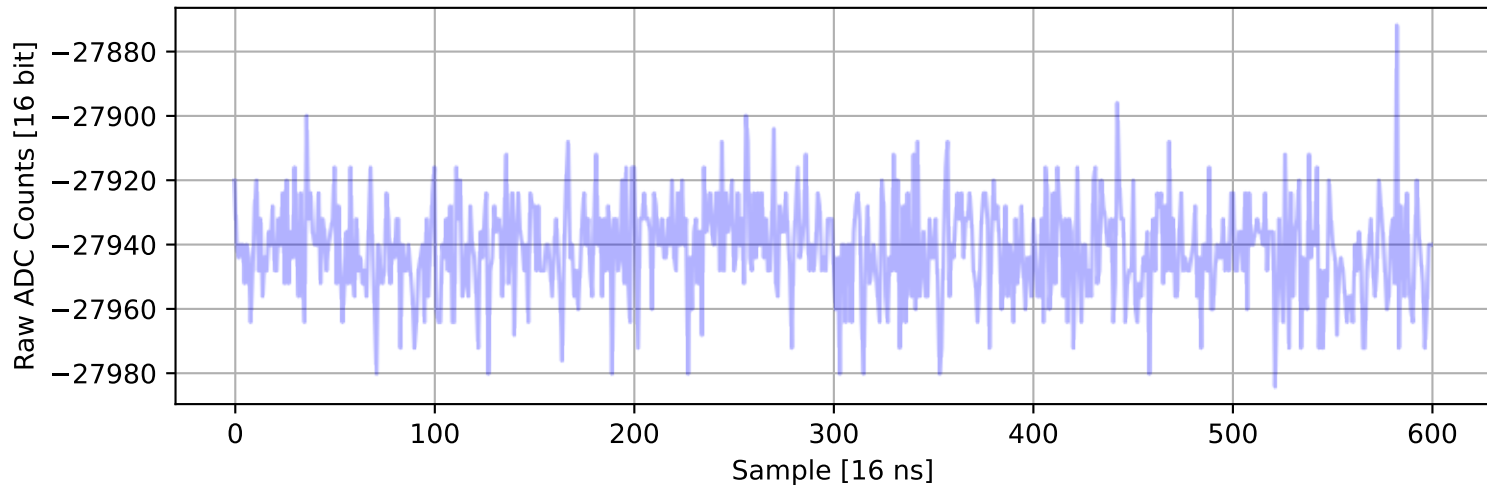
ADC 2, Channel 61, Event 1671: Max Signal Waveform



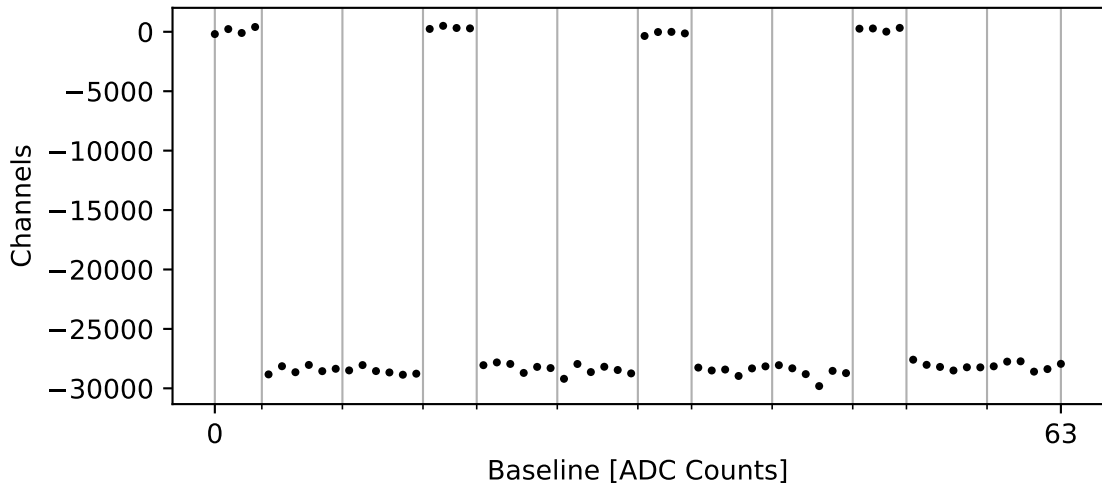
ADC 2, Channel 62, Event 2912: Max Signal Waveform



ADC 2, Channel 63, Event 157: Max Signal Waveform



ADC 2: Baseline Distribution



ADC 2: Max Signal Distribution

