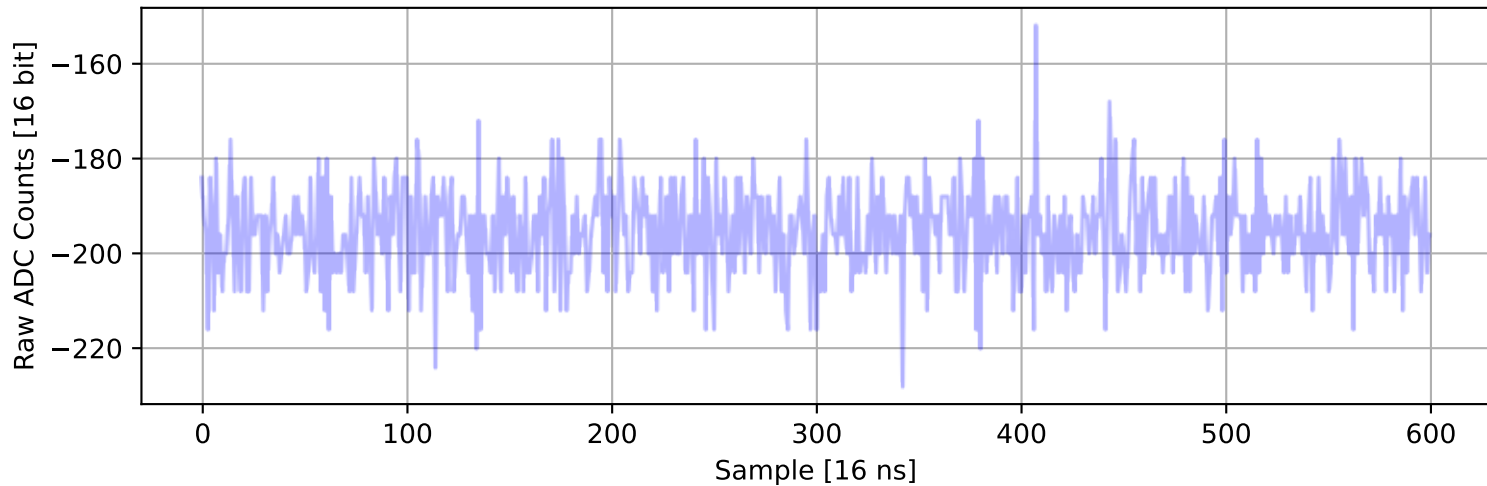
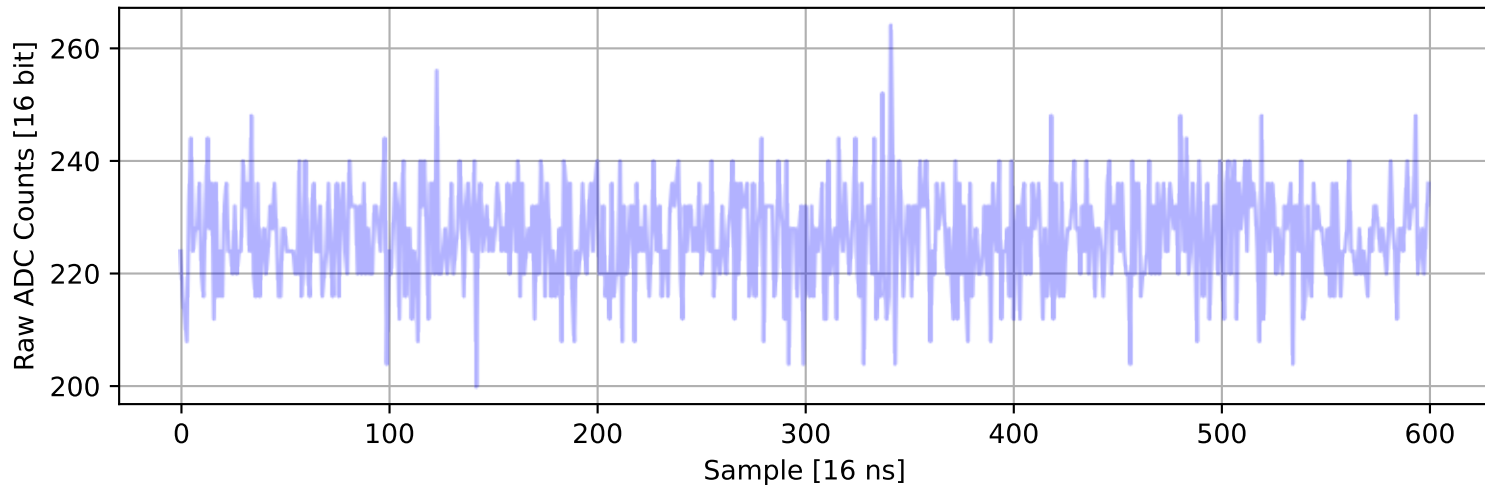


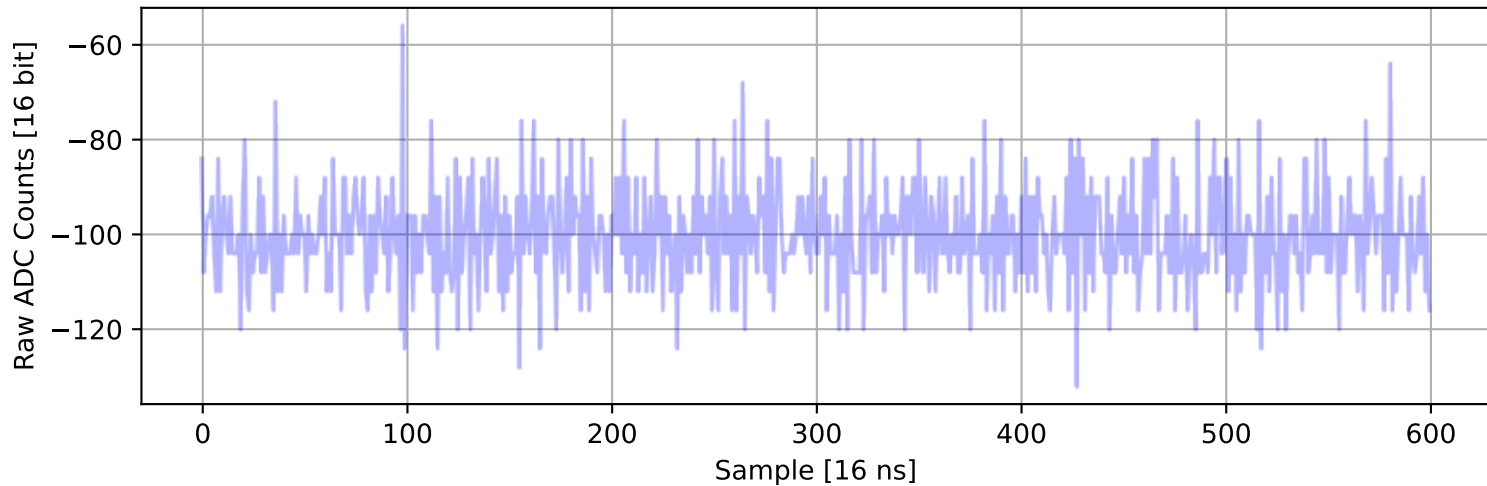
ADC 2, Channel 0, Event 741: Max Signal Waveform



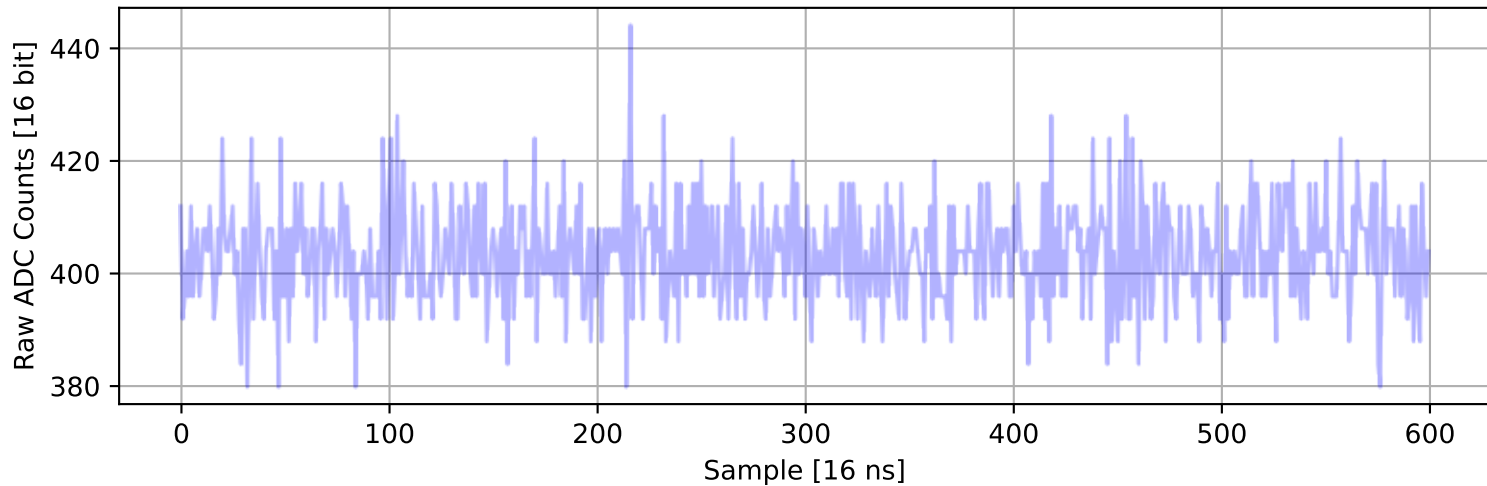
ADC 2, Channel 1, Event 184: Max Signal Waveform



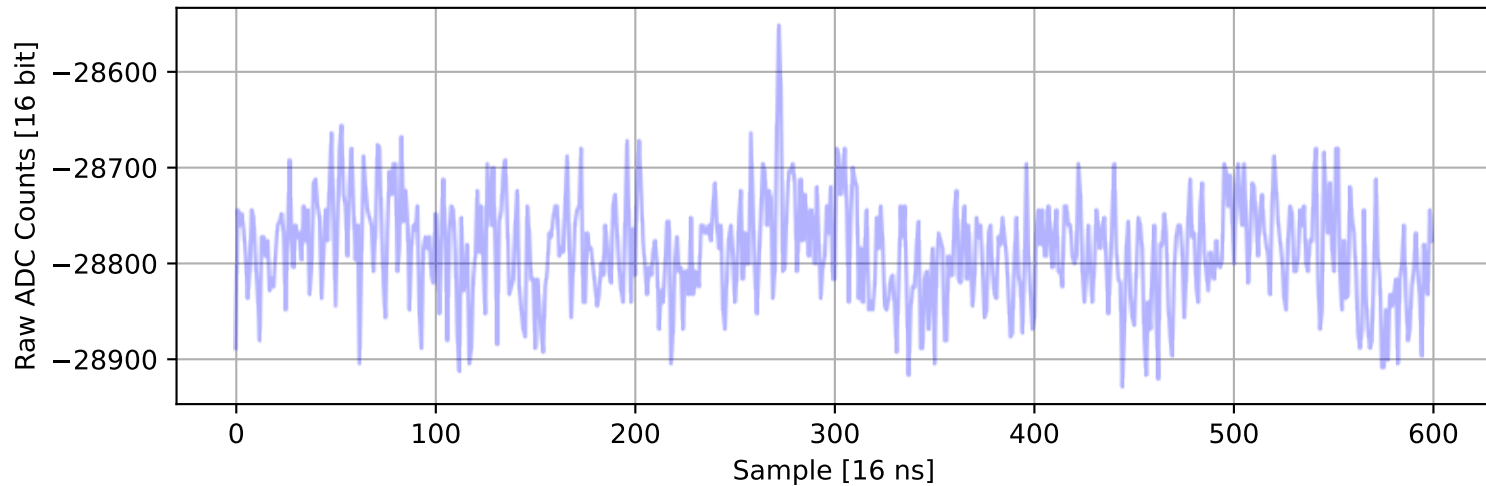
ADC 2, Channel 2, Event 110: Max Signal Waveform



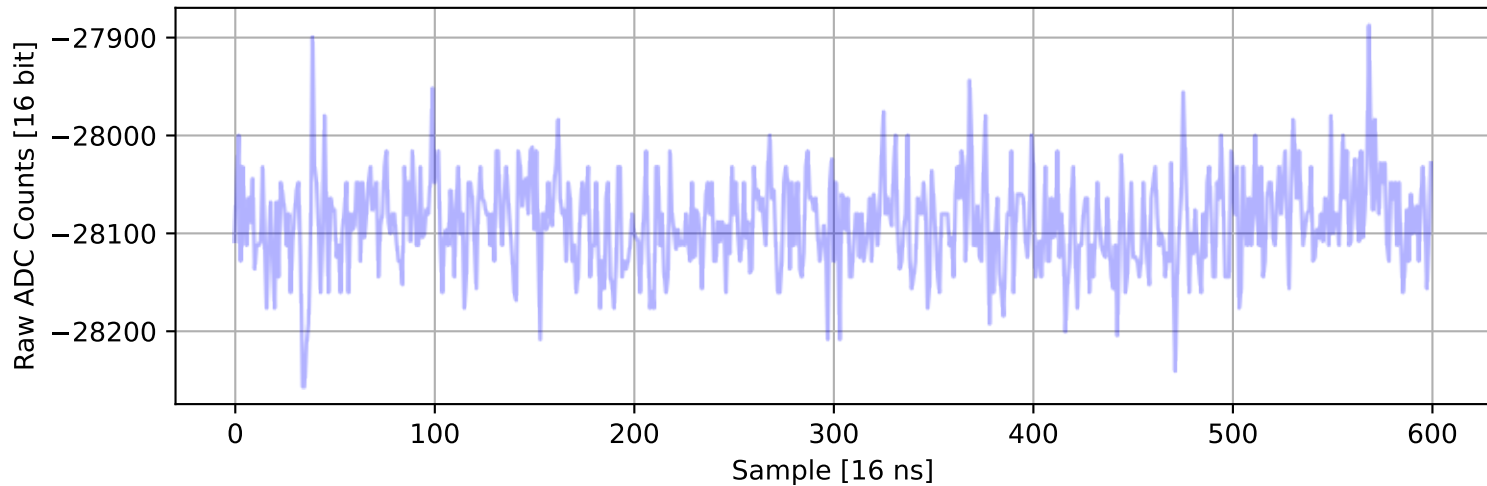
ADC 2, Channel 3, Event 145: Max Signal Waveform



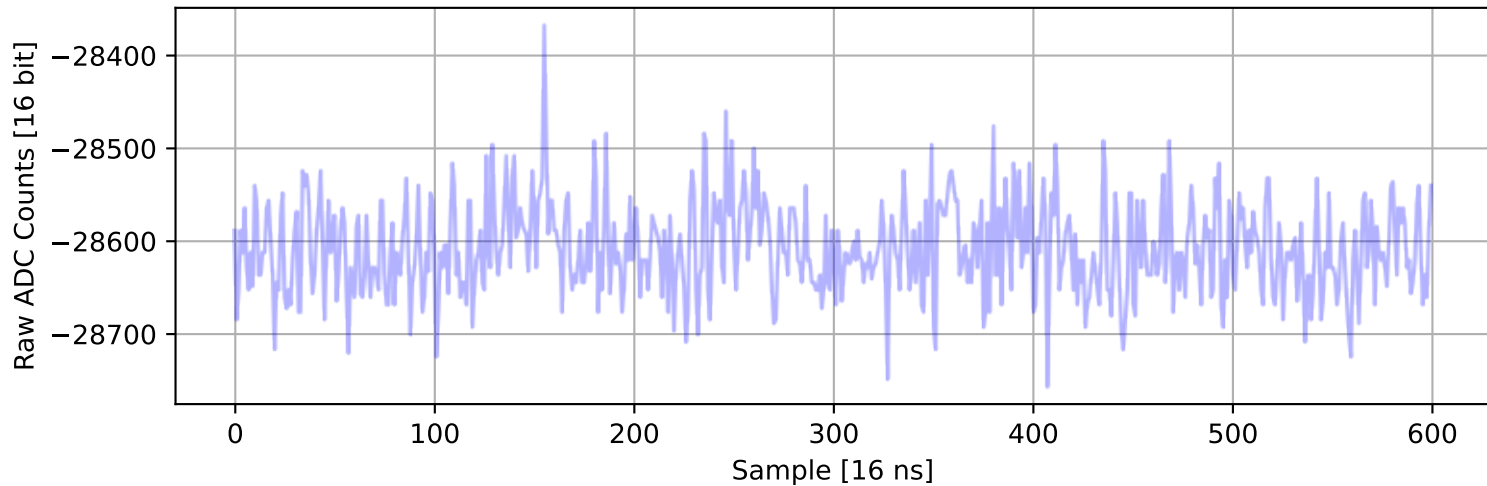
ADC 2, Channel 4, Event 828: Max Signal Waveform



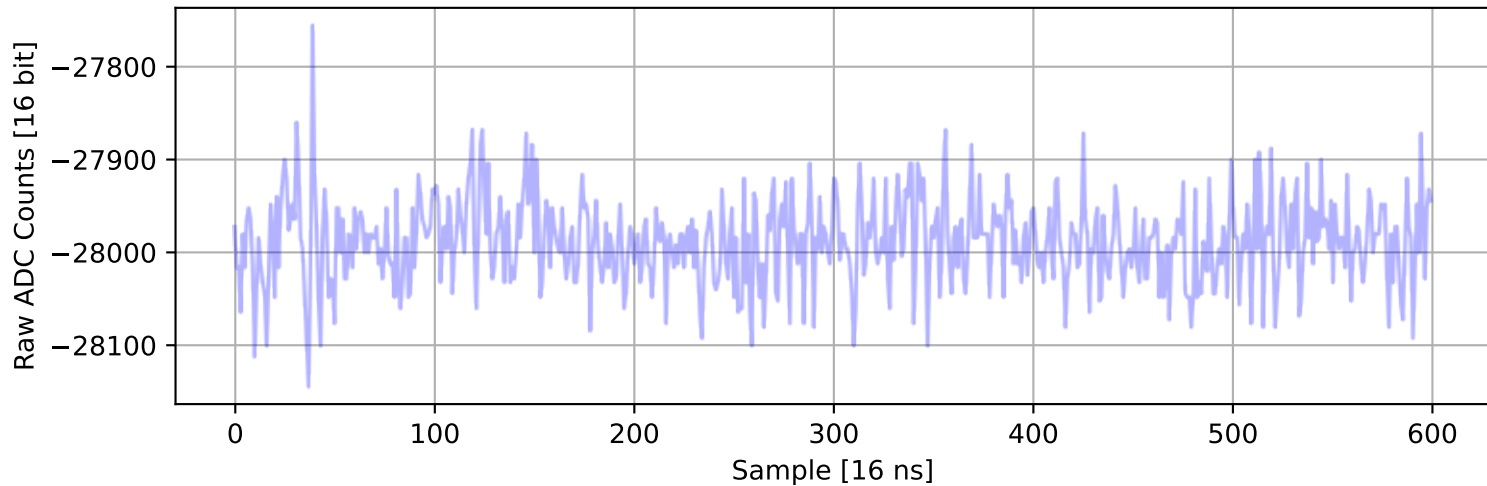
ADC 2, Channel 5, Event 1697: Max Signal Waveform



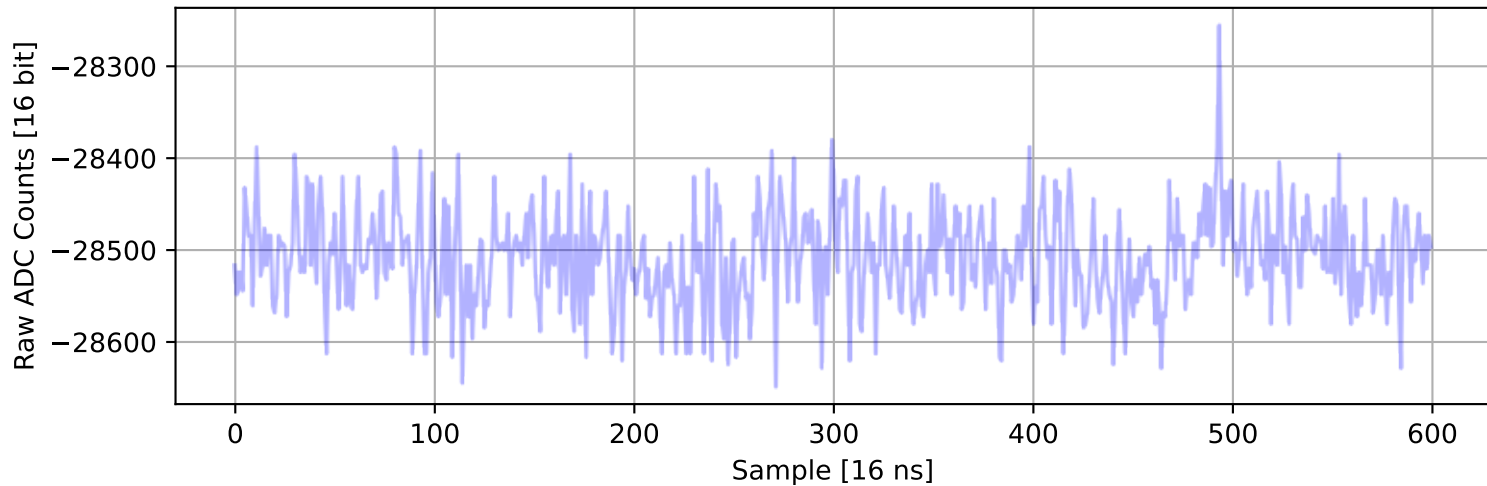
ADC 2, Channel 6, Event 1207: Max Signal Waveform



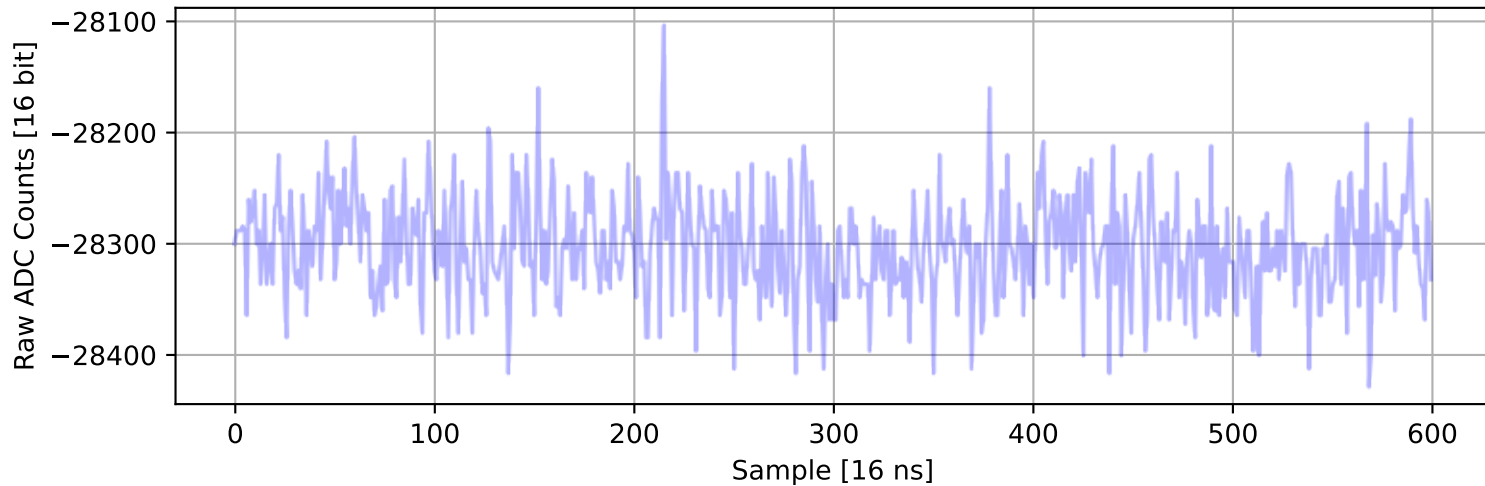
ADC 2, Channel 7, Event 1697: Max Signal Waveform



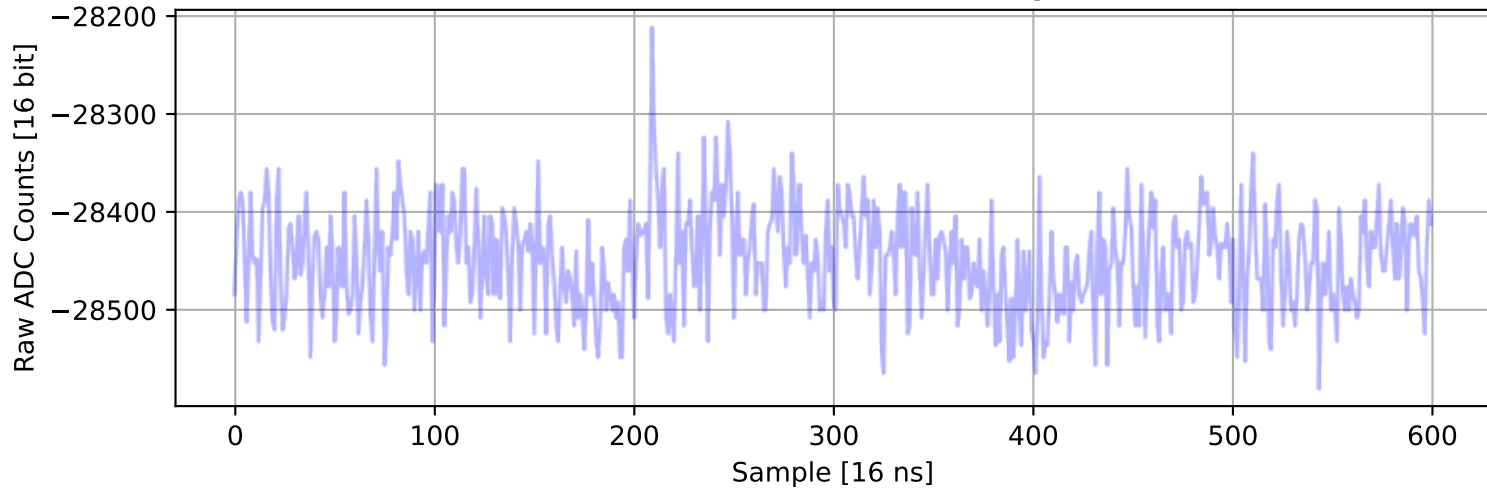
ADC 2, Channel 8, Event 1485: Max Signal Waveform



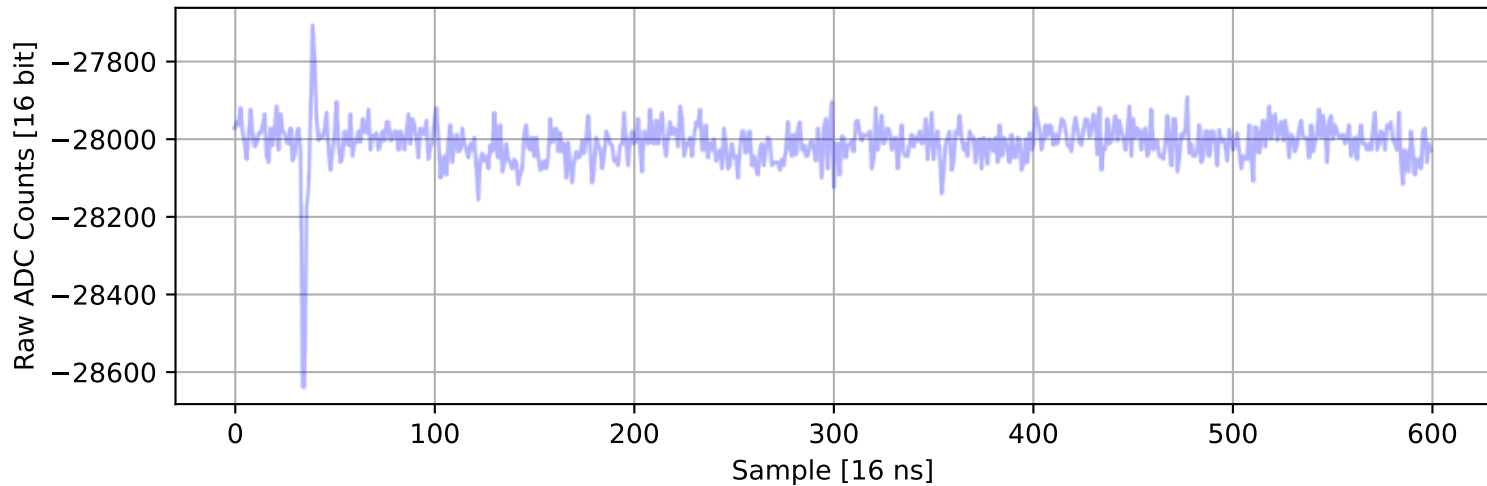
ADC 2, Channel 9, Event 1444: Max Signal Waveform



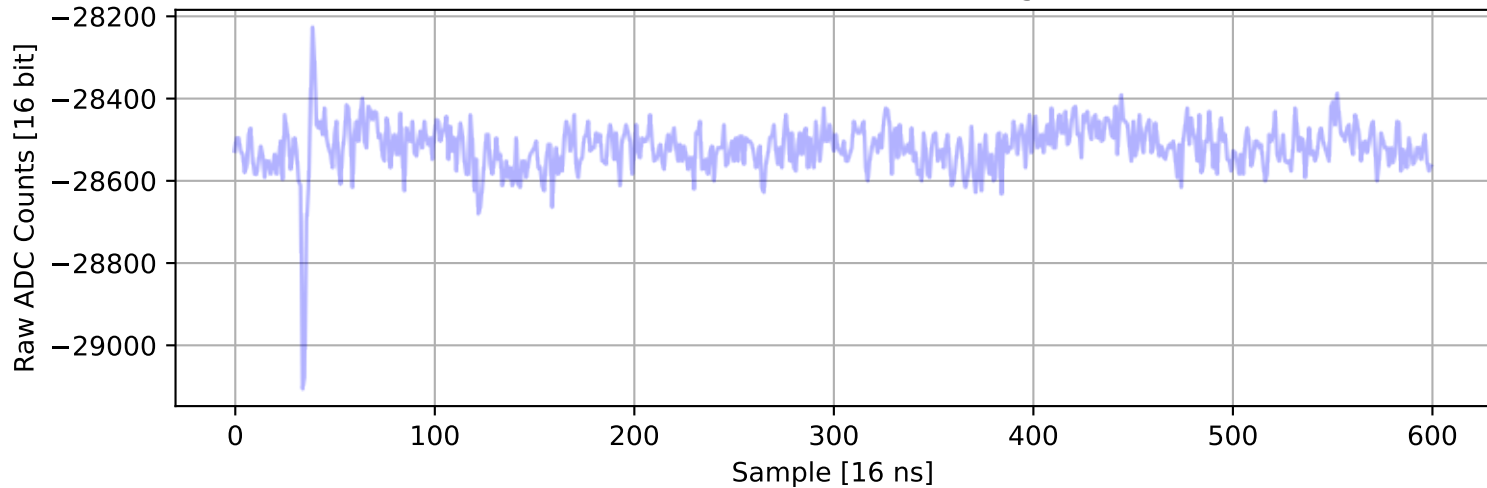
ADC 2, Channel 10, Event 1263: Max Signal Waveform



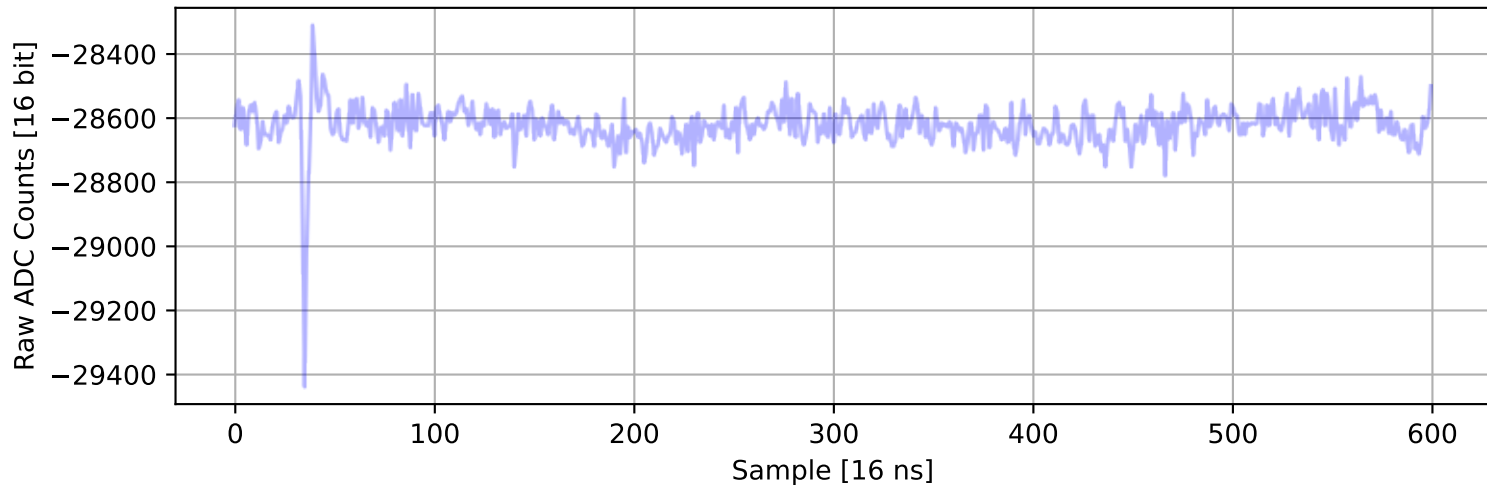
ADC 2, Channel 11, Event 658: Max Signal Waveform



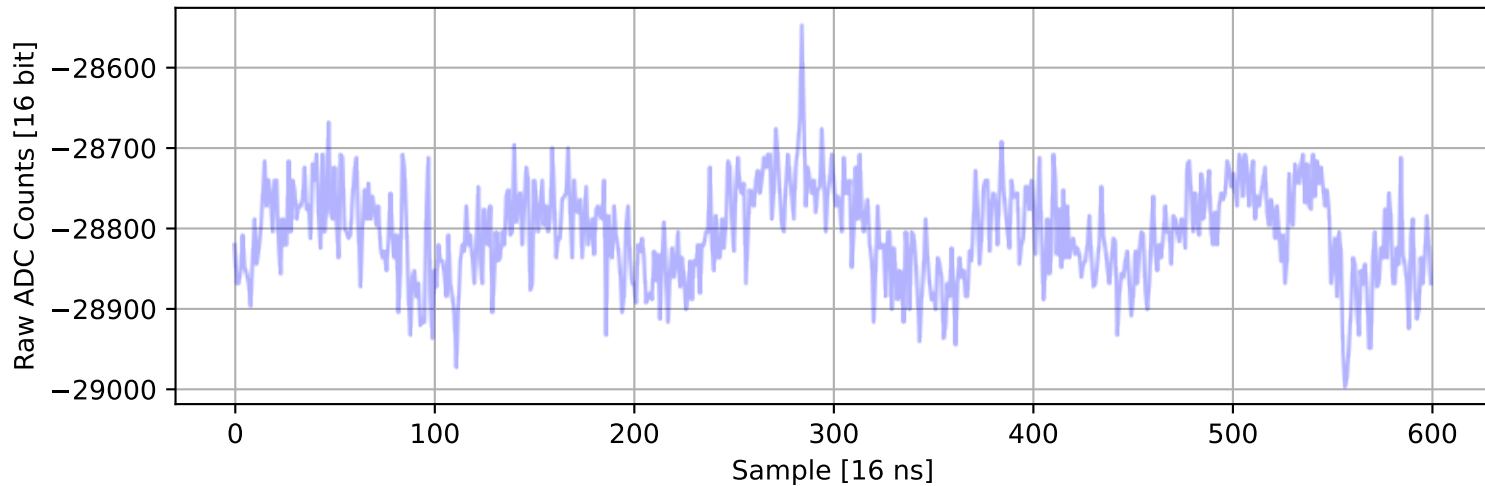
ADC 2, Channel 12, Event 658: Max Signal Waveform



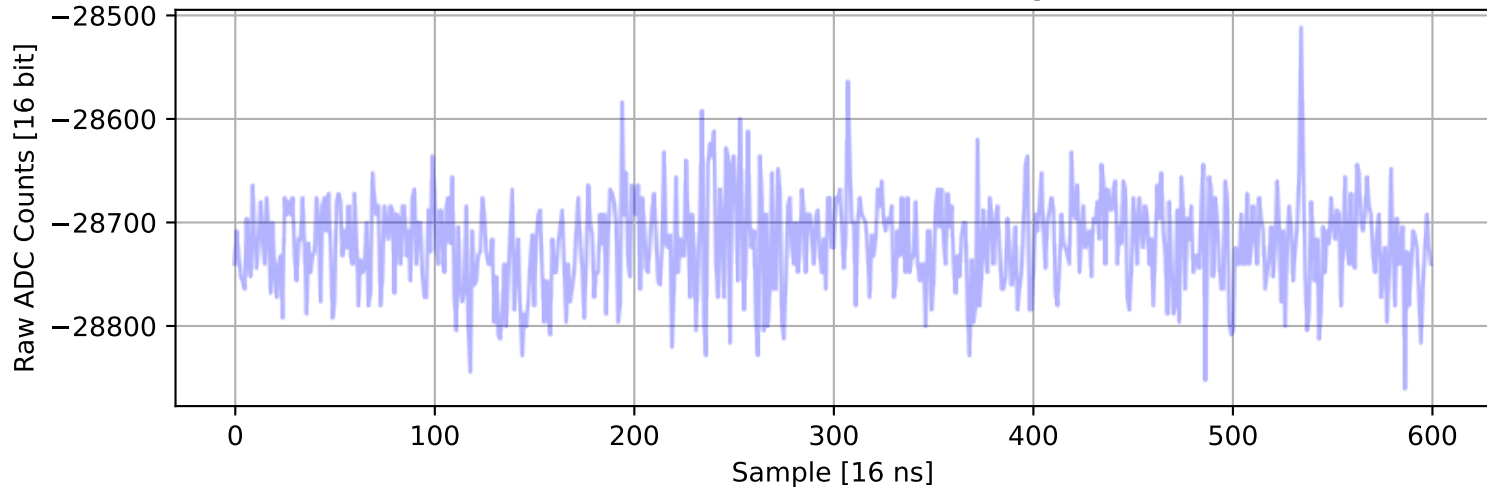
ADC 2, Channel 13, Event 1697: Max Signal Waveform



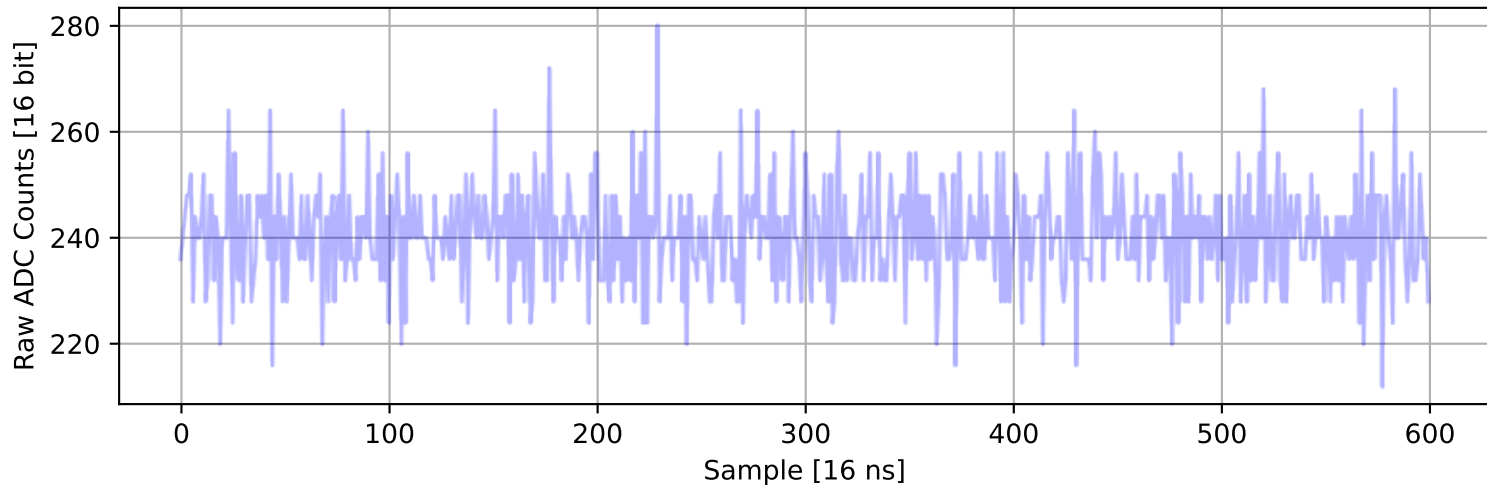
ADC 2, Channel 14, Event 210: Max Signal Waveform



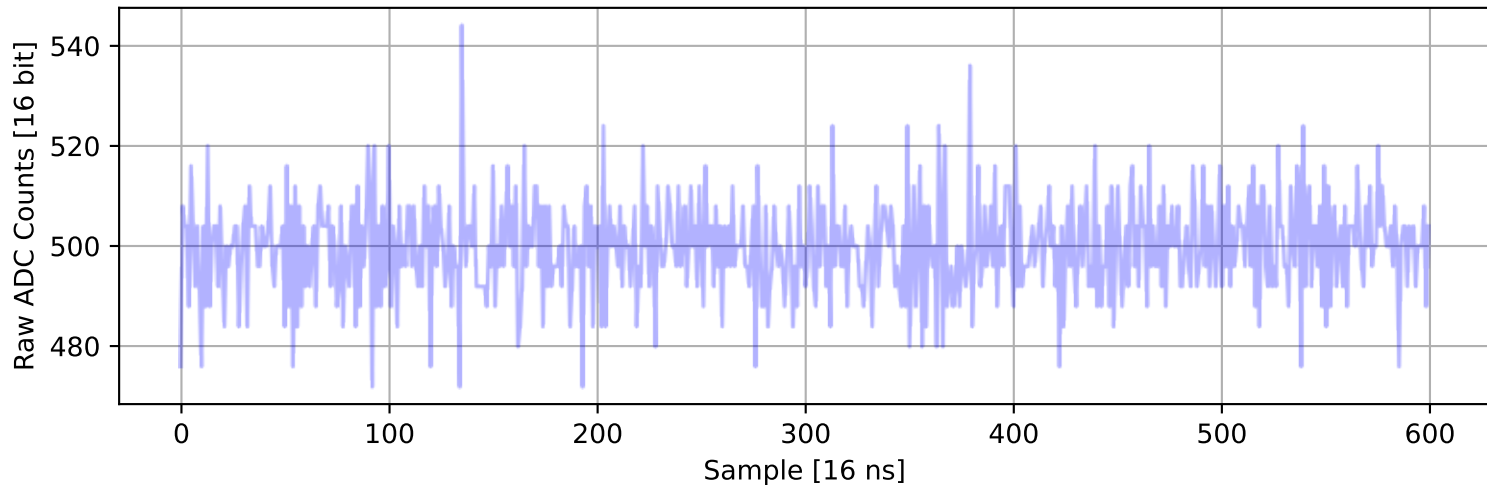
ADC 2, Channel 15, Event 1110: Max Signal Waveform



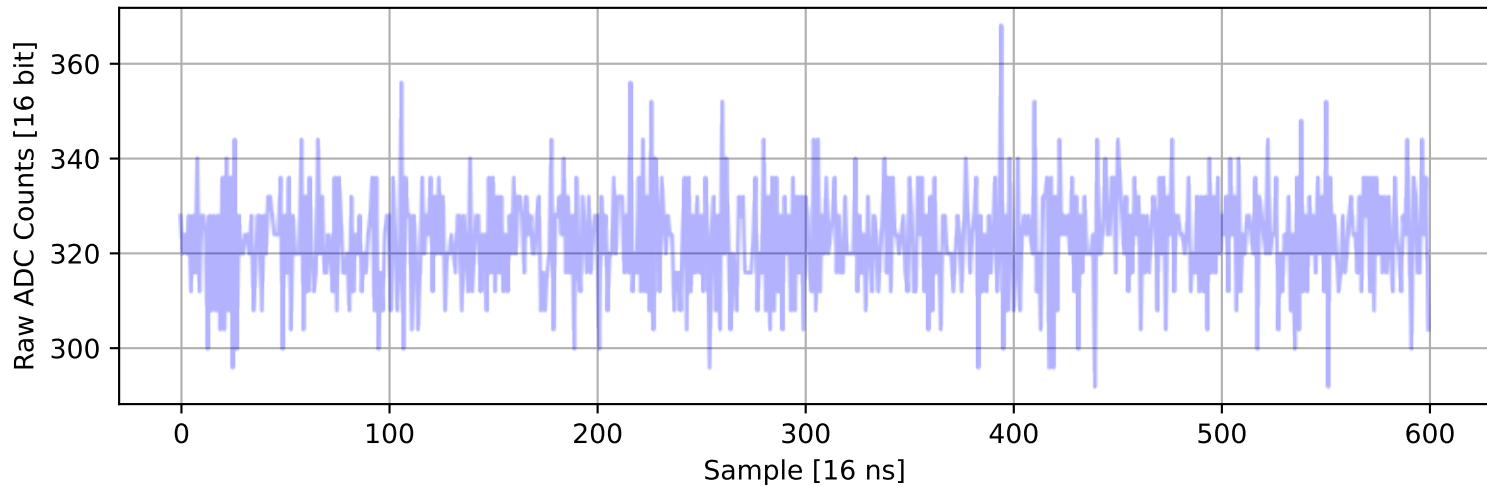
ADC 2, Channel 16, Event 161: Max Signal Waveform



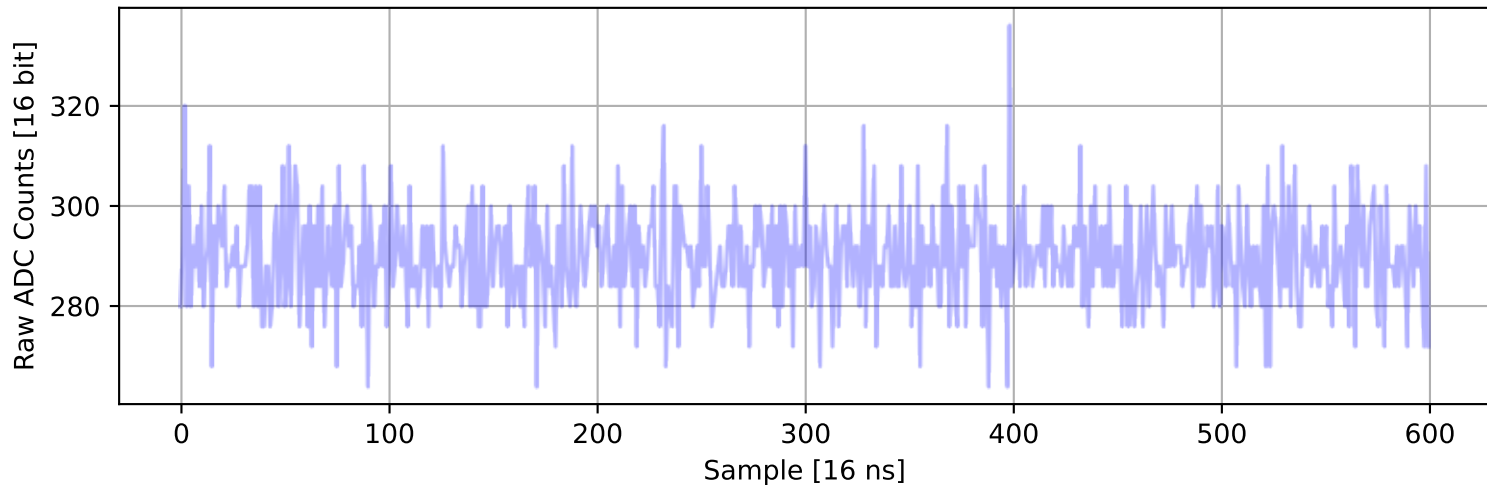
ADC 2, Channel 17, Event 68: Max Signal Waveform



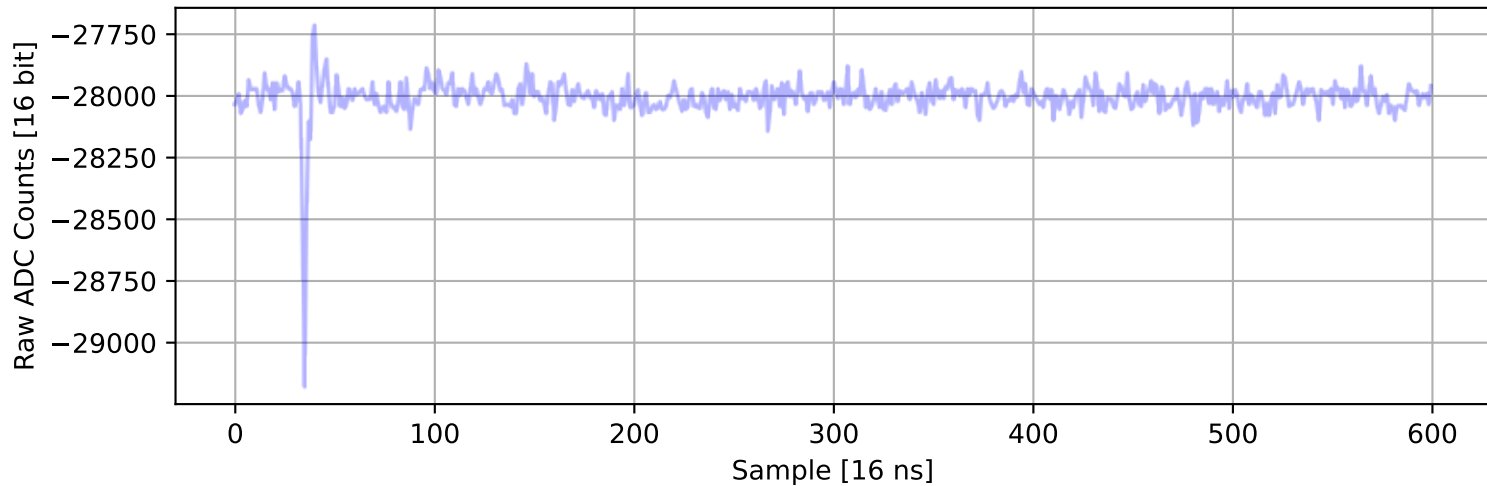
ADC 2, Channel 18, Event 1035: Max Signal Waveform



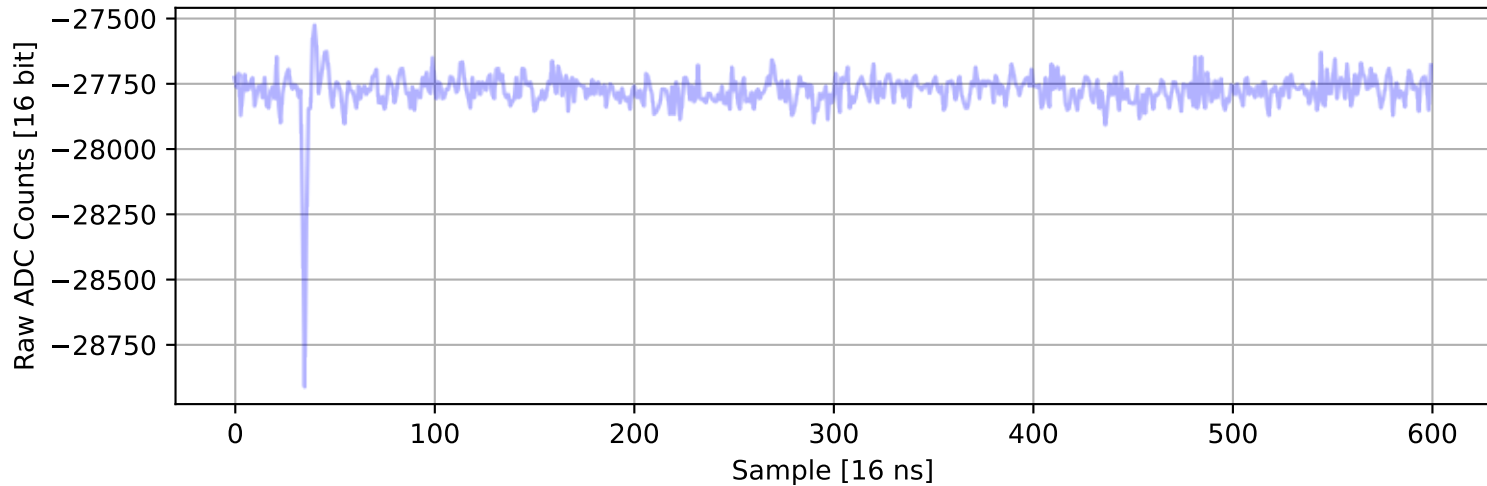
ADC 2, Channel 19, Event 1546: Max Signal Waveform



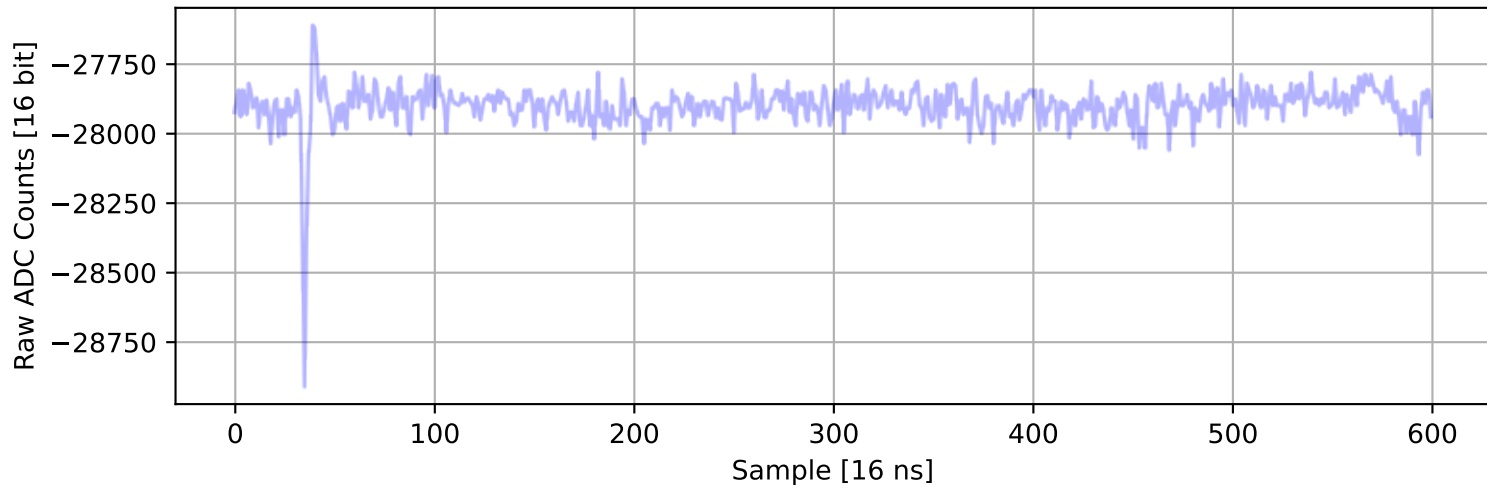
ADC 2, Channel 20, Event 1697: Max Signal Waveform



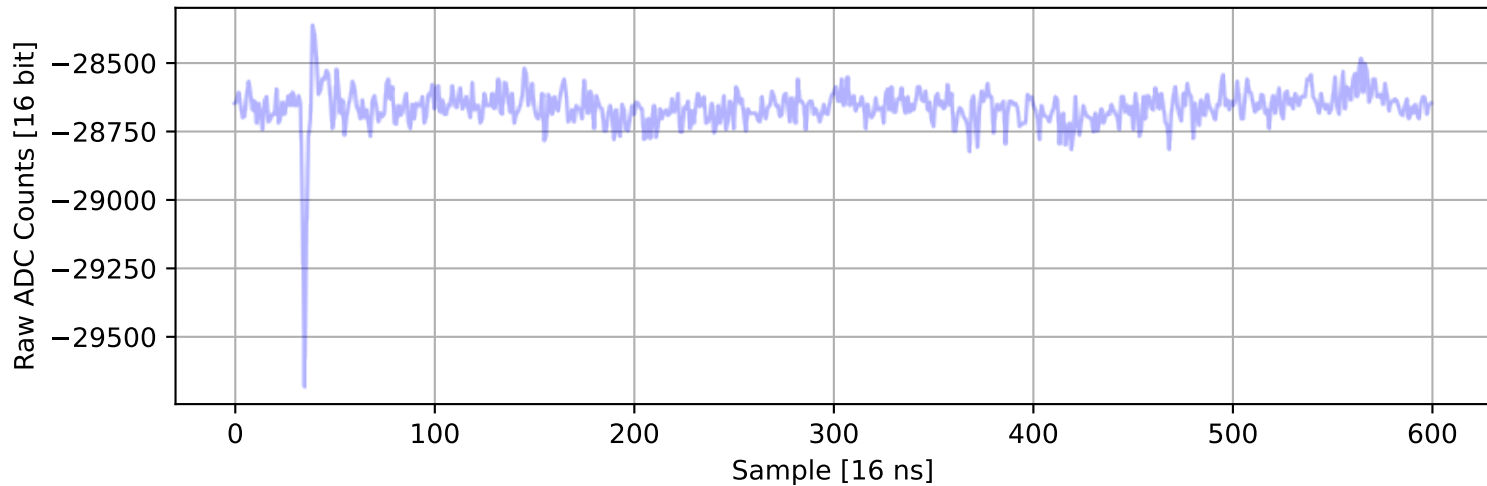
ADC 2, Channel 21, Event 1697: Max Signal Waveform



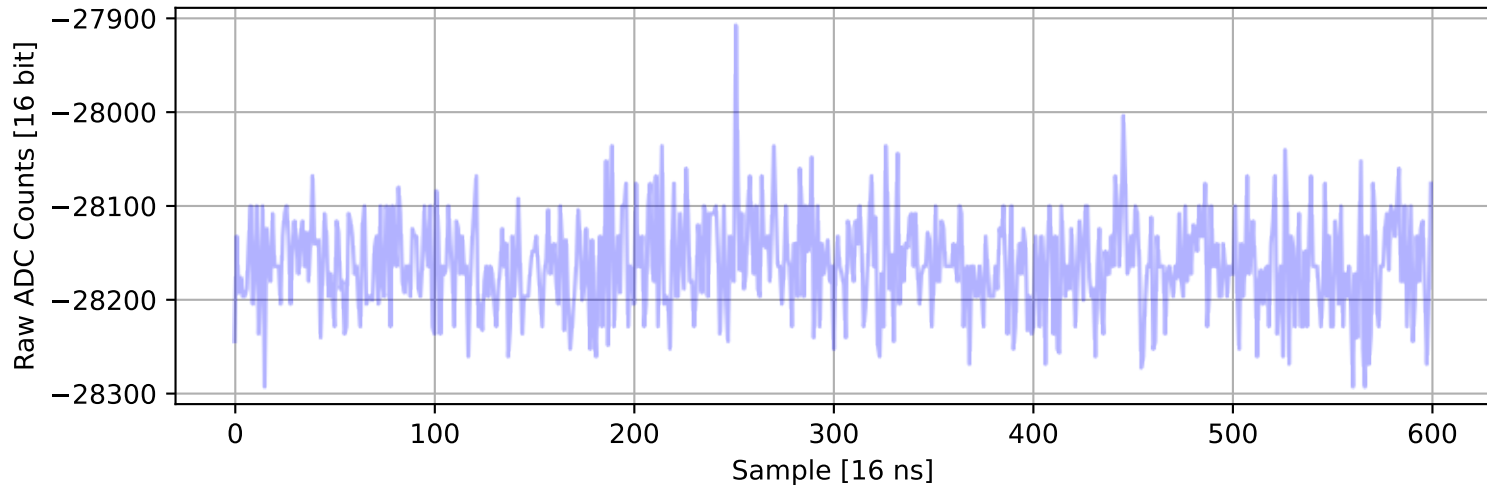
ADC 2, Channel 22, Event 1697: Max Signal Waveform



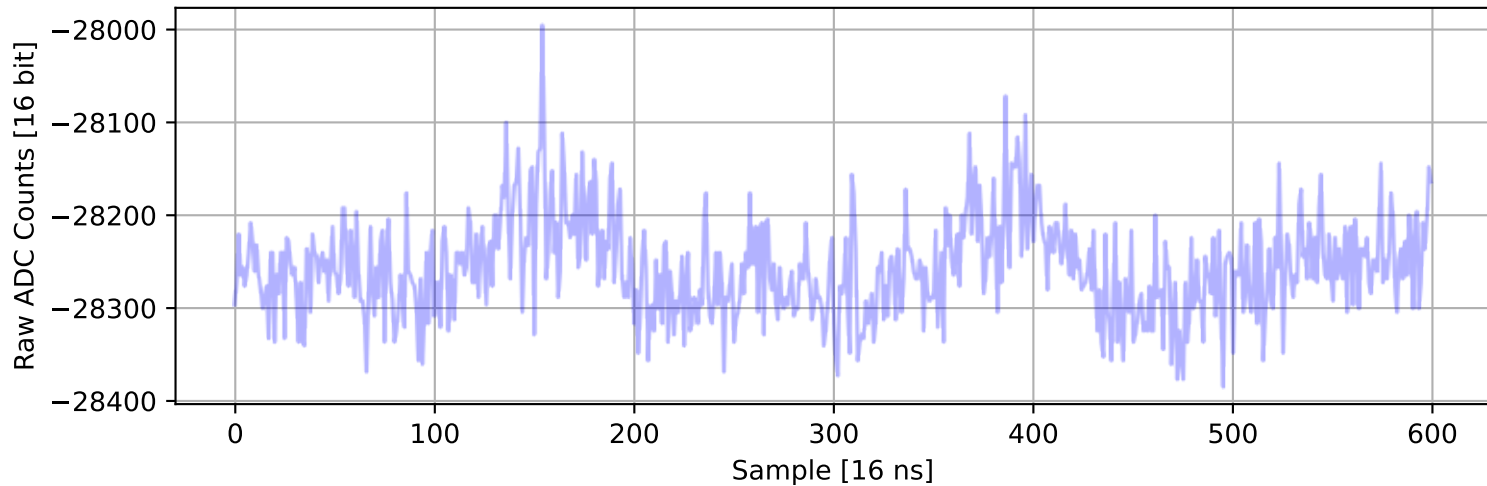
ADC 2, Channel 23, Event 1697: Max Signal Waveform



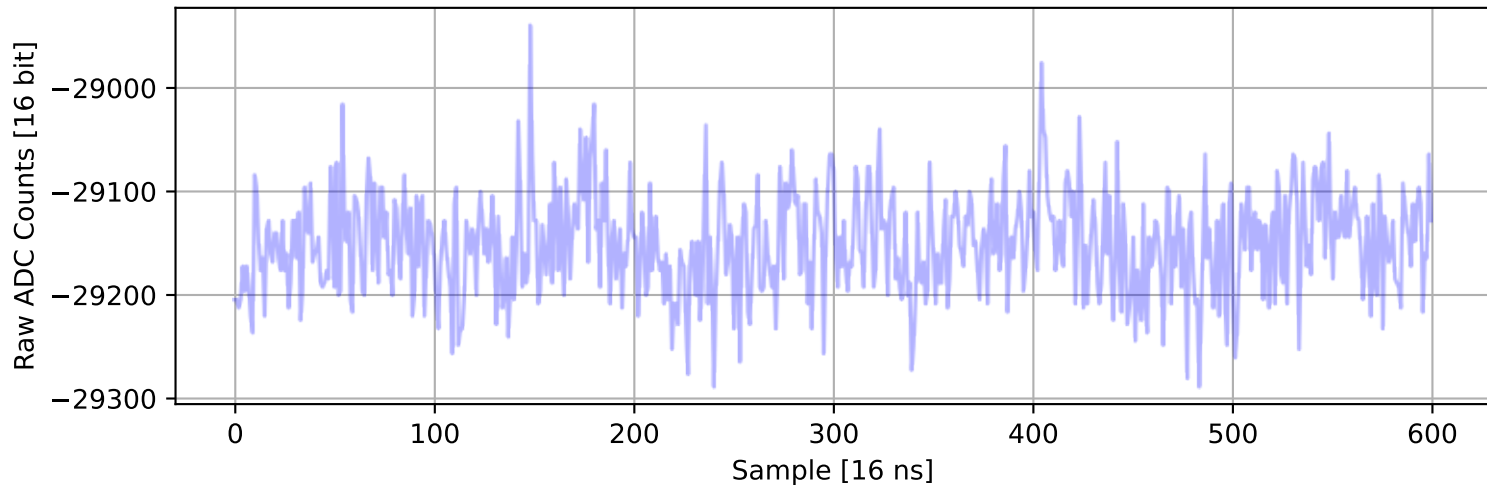
ADC 2, Channel 24, Event 599: Max Signal Waveform



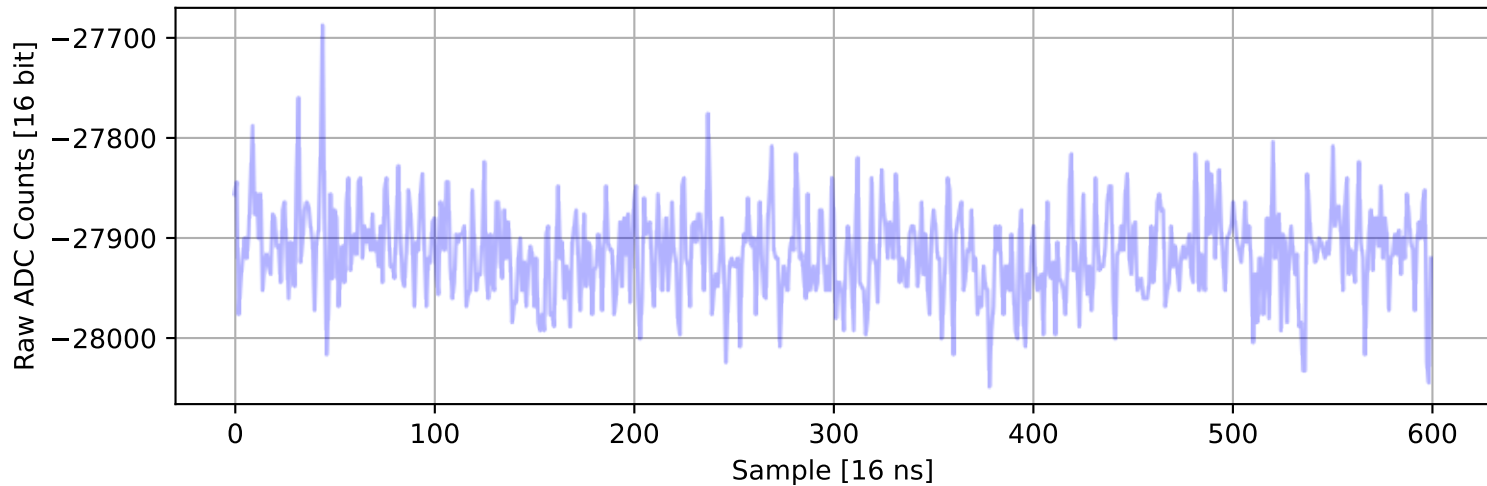
ADC 2, Channel 25, Event 765: Max Signal Waveform



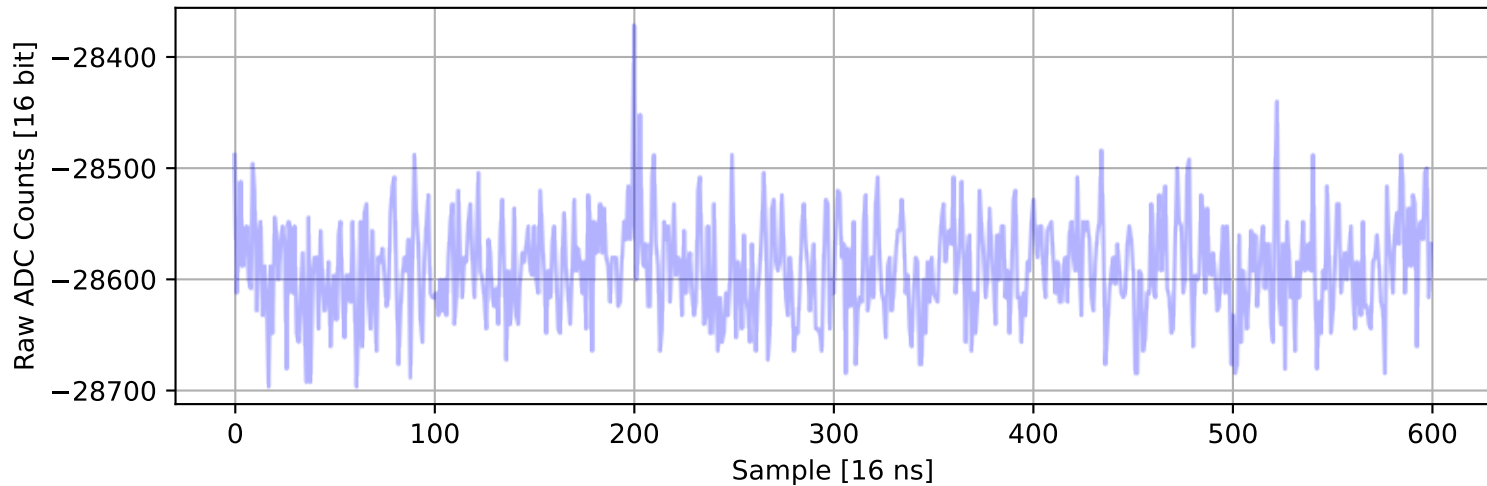
ADC 2, Channel 26, Event 103: Max Signal Waveform



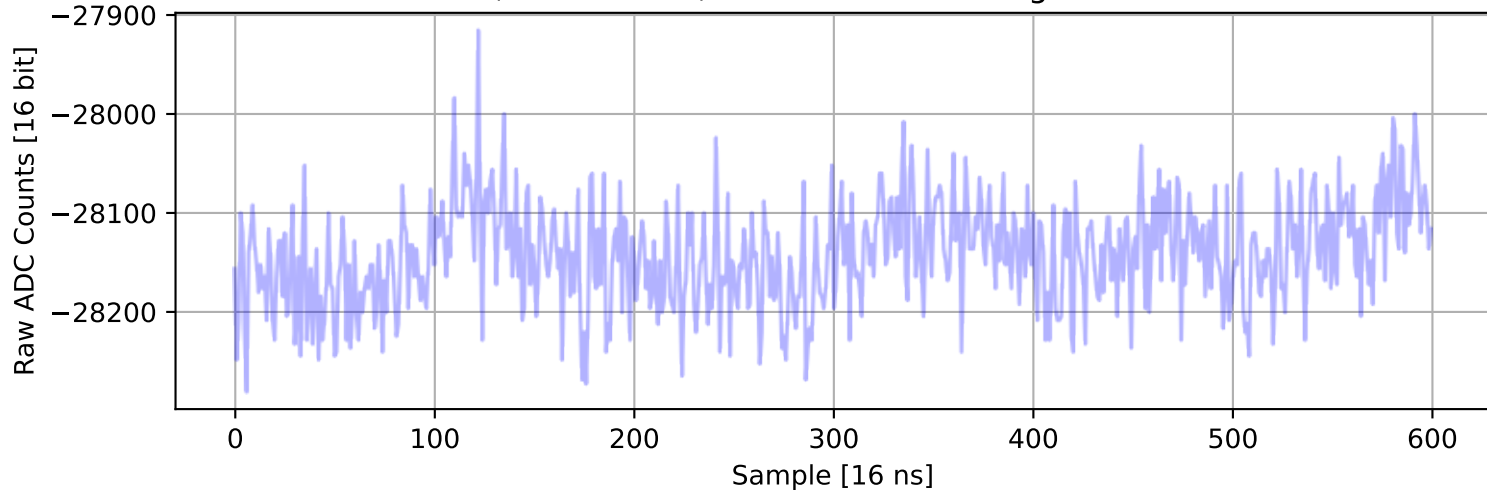
ADC 2, Channel 27, Event 435: Max Signal Waveform



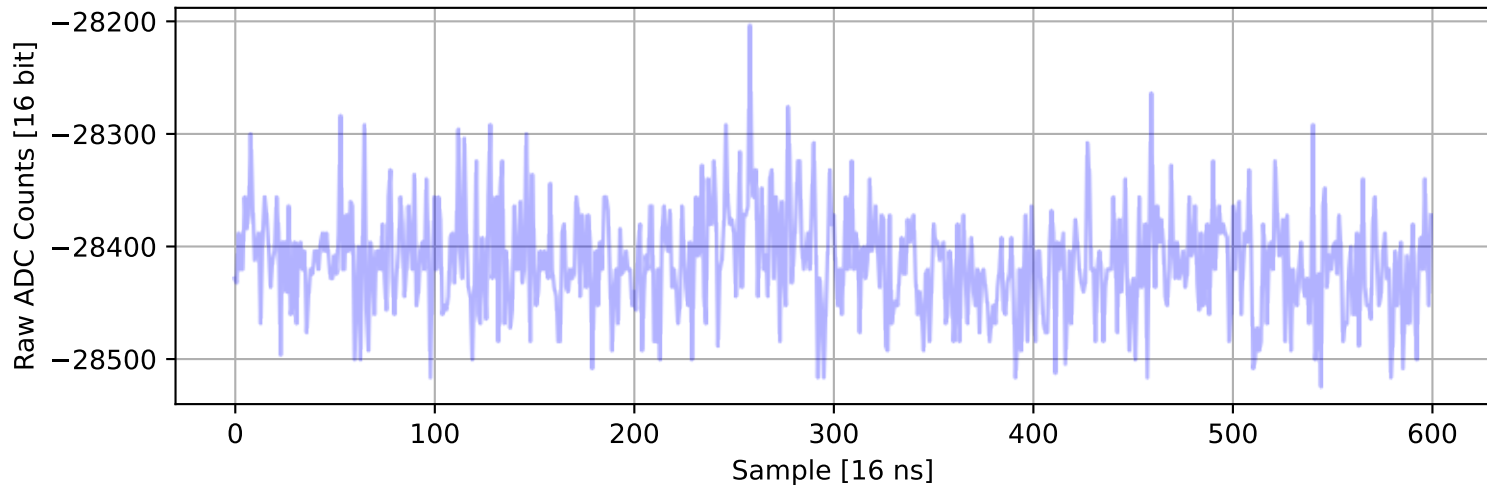
ADC 2, Channel 28, Event 141: Max Signal Waveform



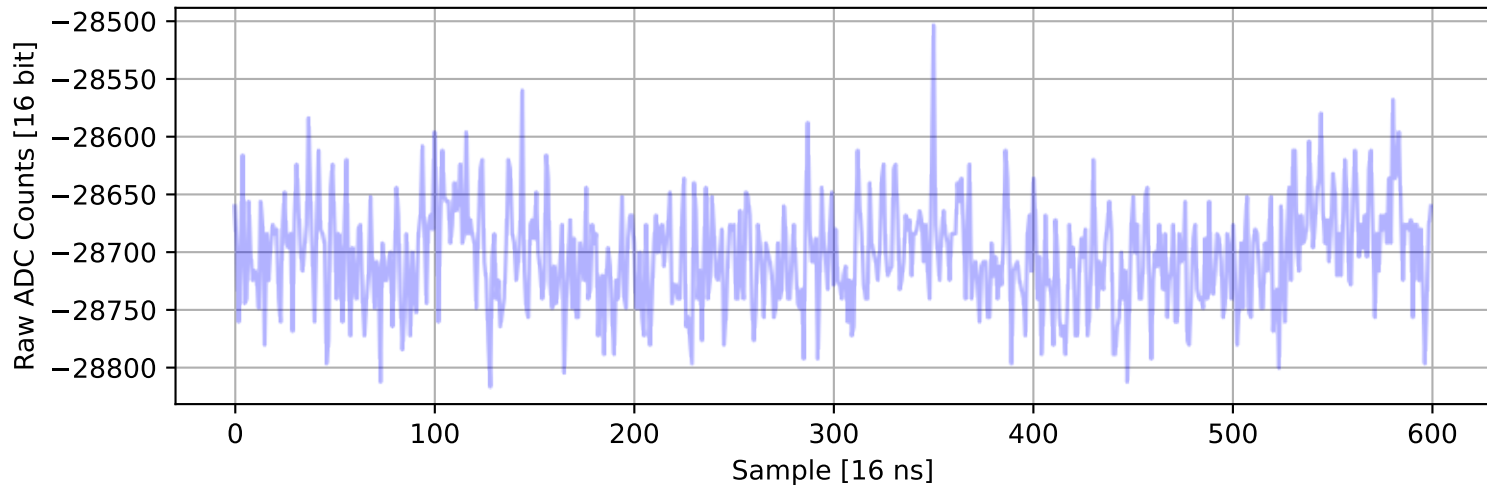
ADC 2, Channel 29, Event 1173: Max Signal Waveform



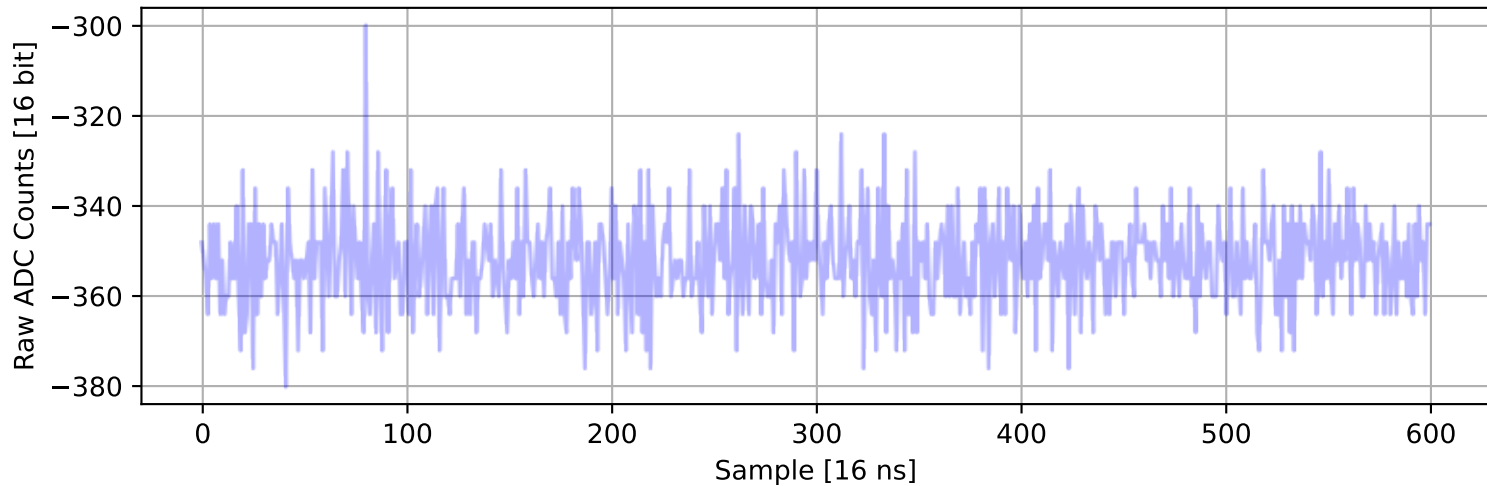
ADC 2, Channel 30, Event 1202: Max Signal Waveform



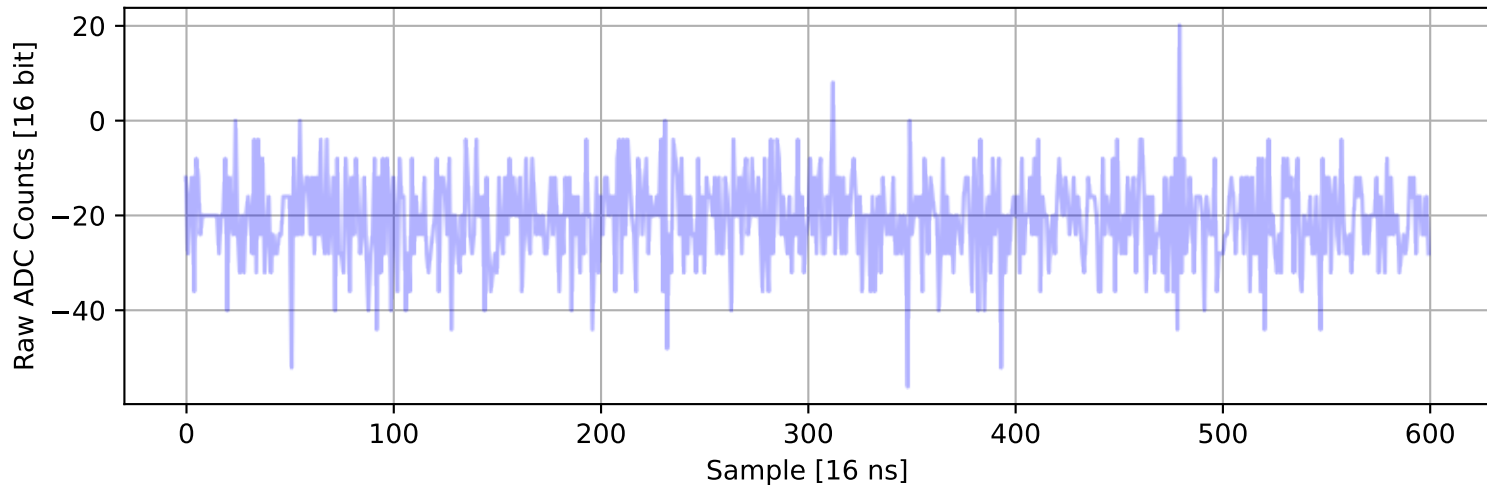
ADC 2, Channel 31, Event 597: Max Signal Waveform



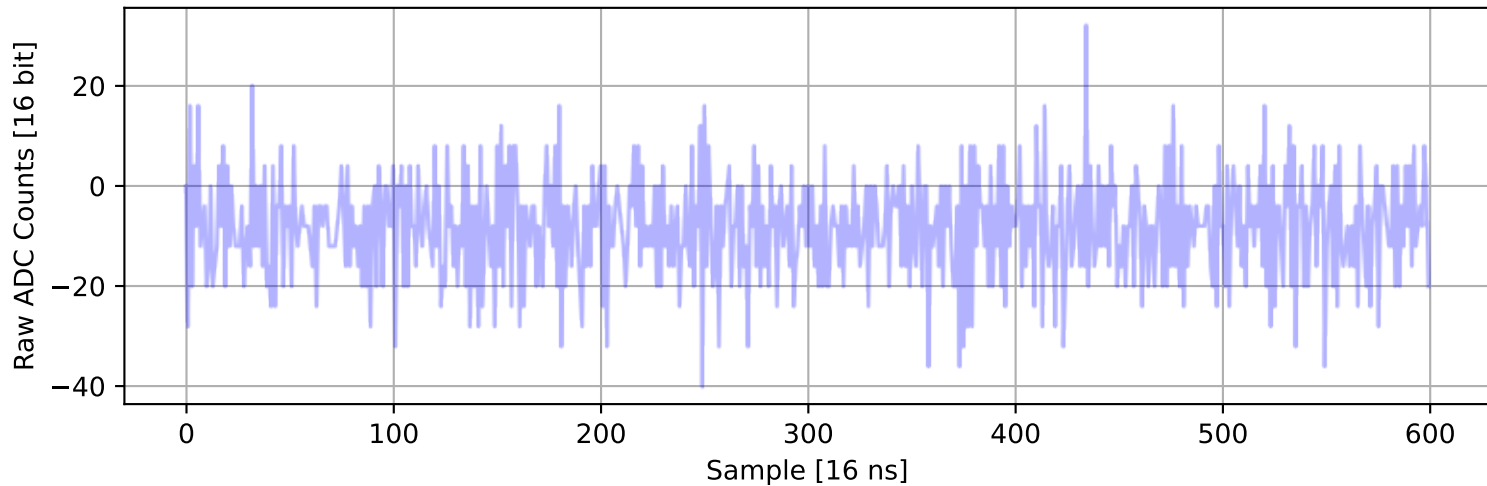
ADC 2, Channel 32, Event 1465: Max Signal Waveform



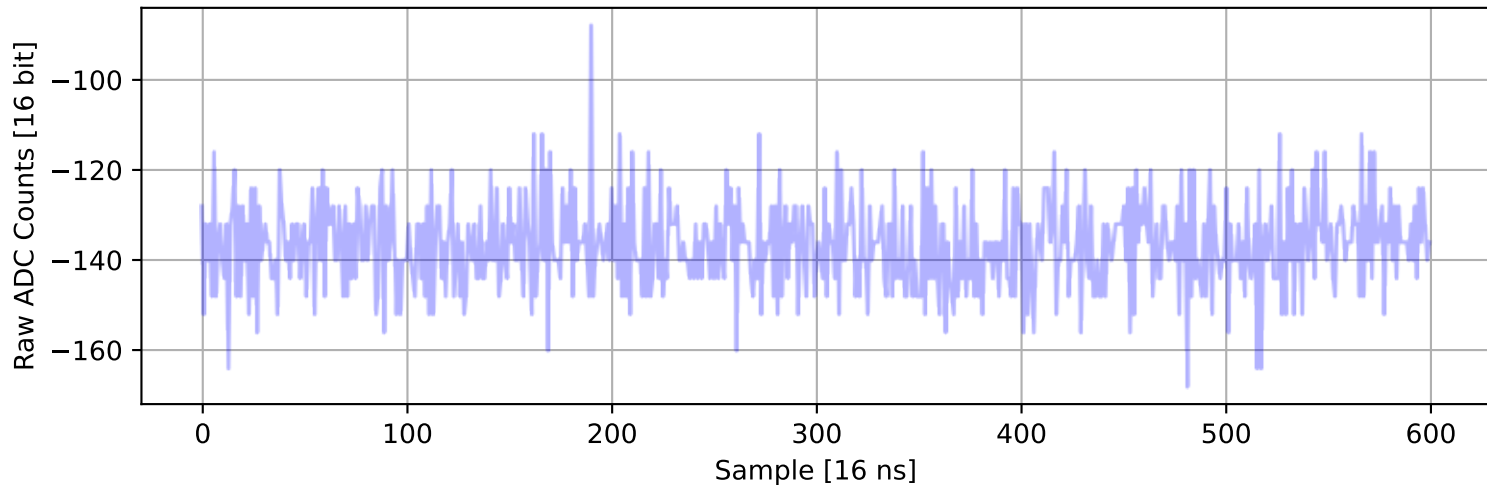
ADC 2, Channel 33, Event 1690: Max Signal Waveform



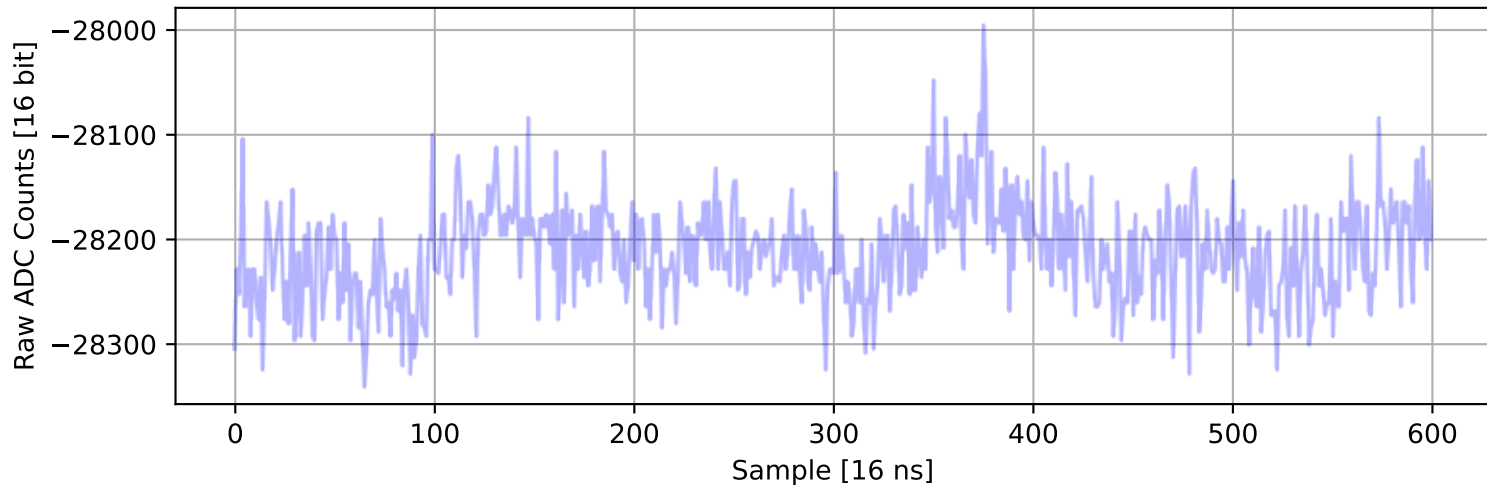
ADC 2, Channel 34, Event 32: Max Signal Waveform



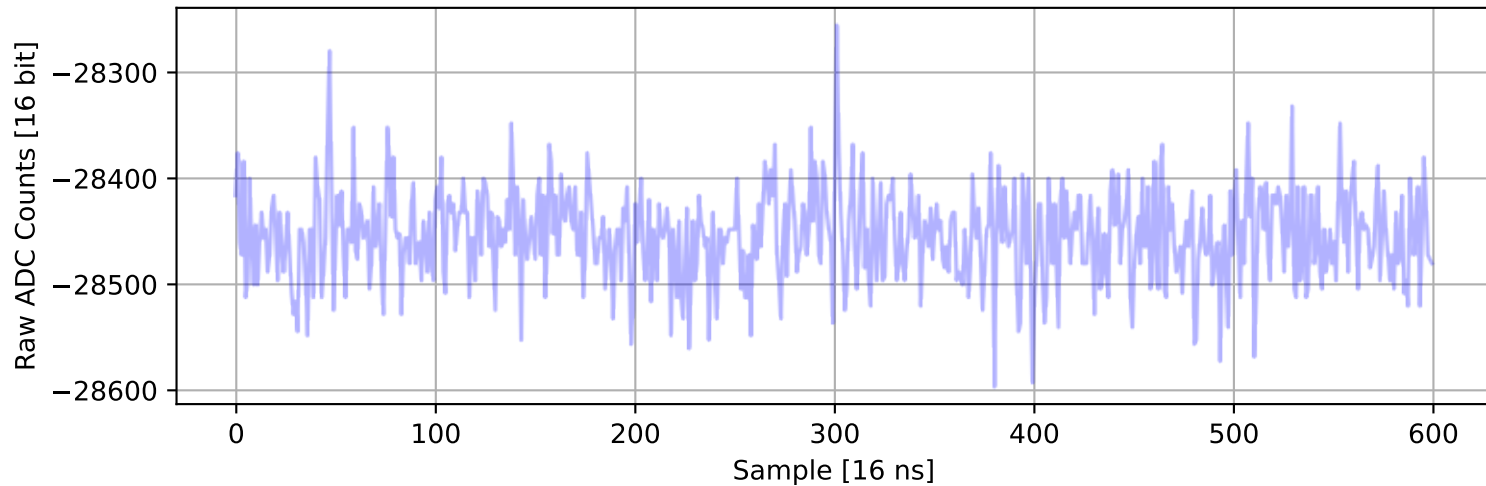
ADC 2, Channel 35, Event 245: Max Signal Waveform



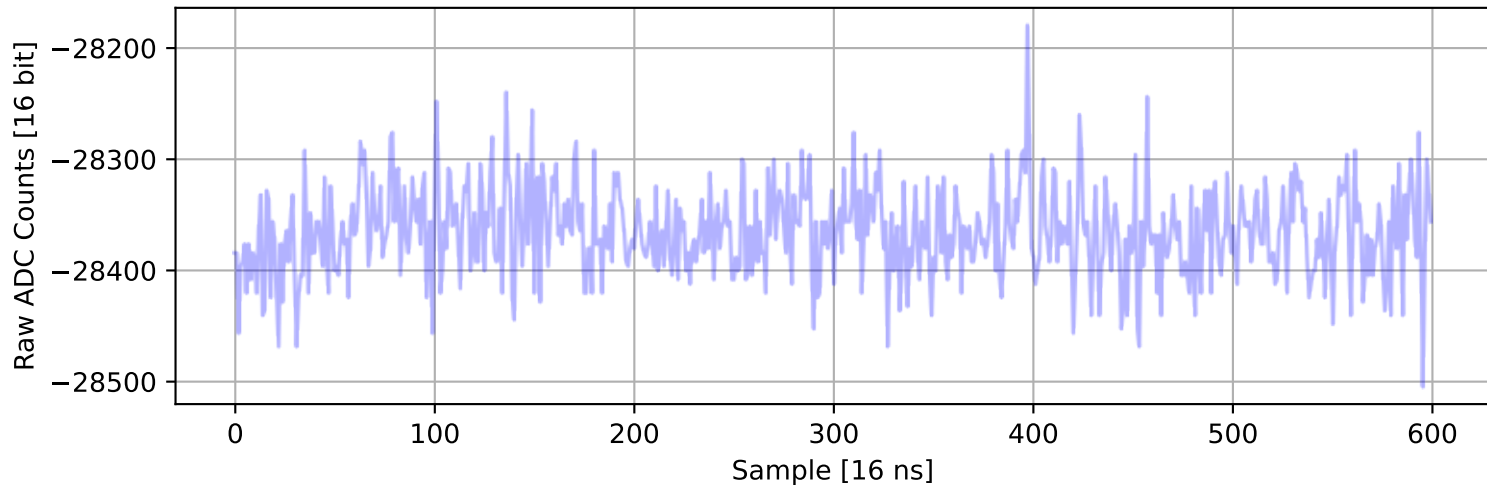
ADC 2, Channel 36, Event 646: Max Signal Waveform



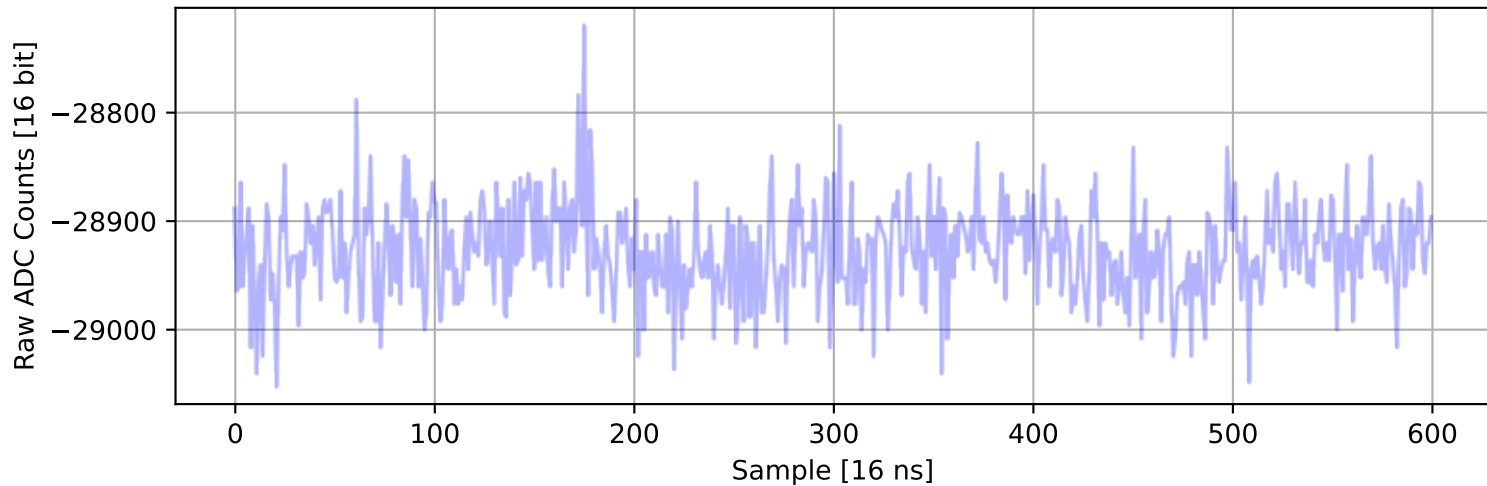
ADC 2, Channel 37, Event 61: Max Signal Waveform



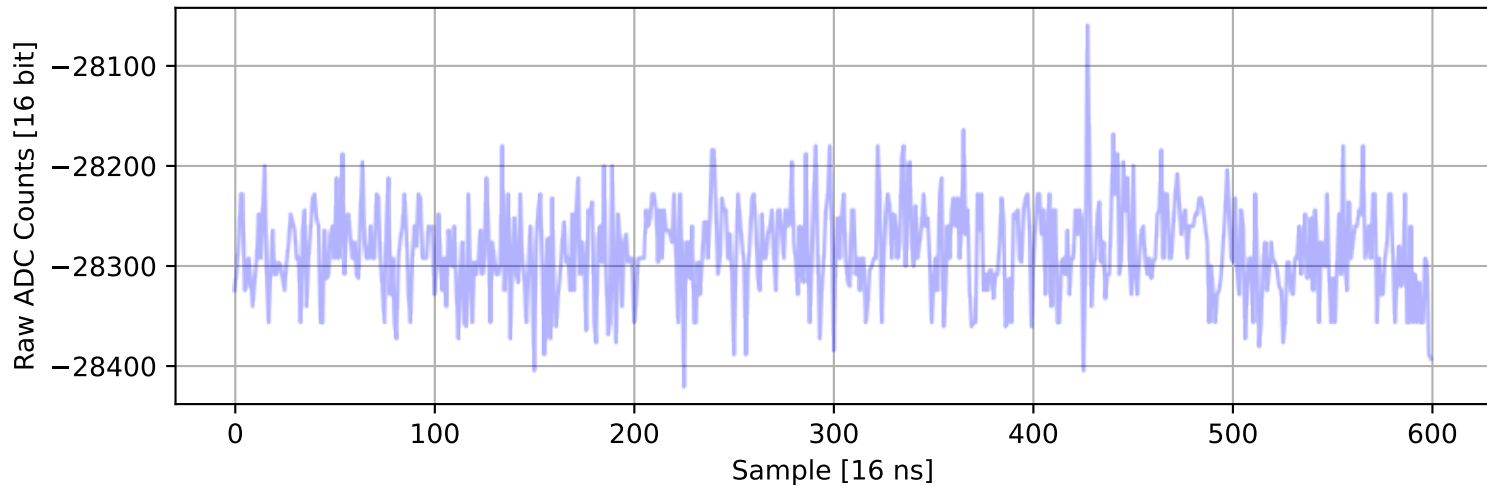
ADC 2, Channel 38, Event 270: Max Signal Waveform



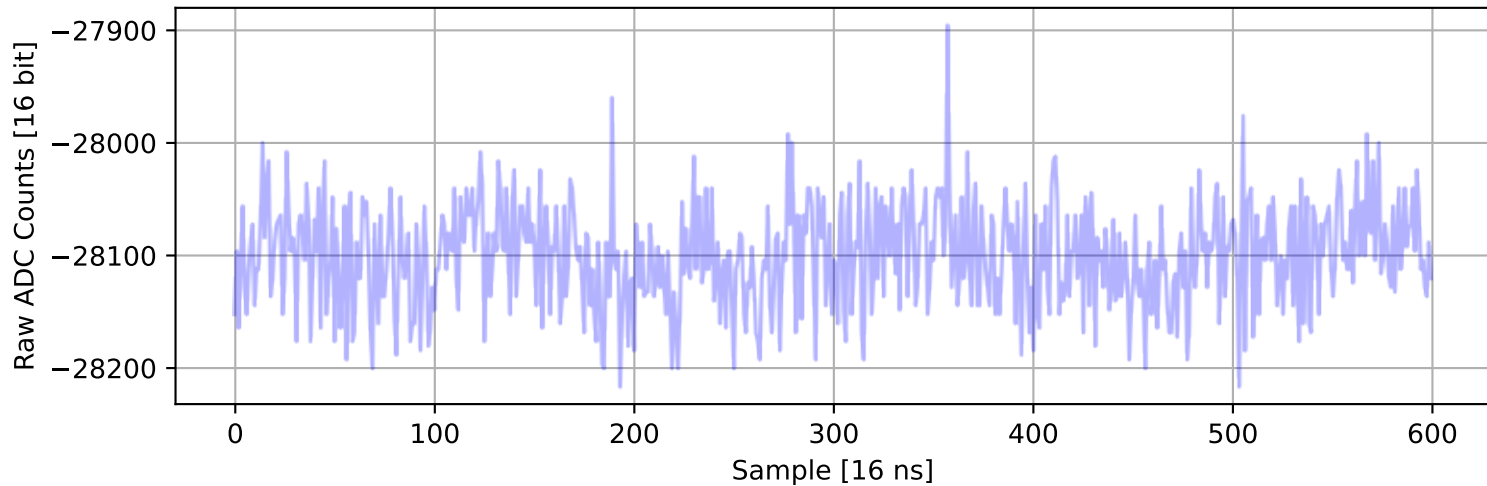
ADC 2, Channel 39, Event 178: Max Signal Waveform



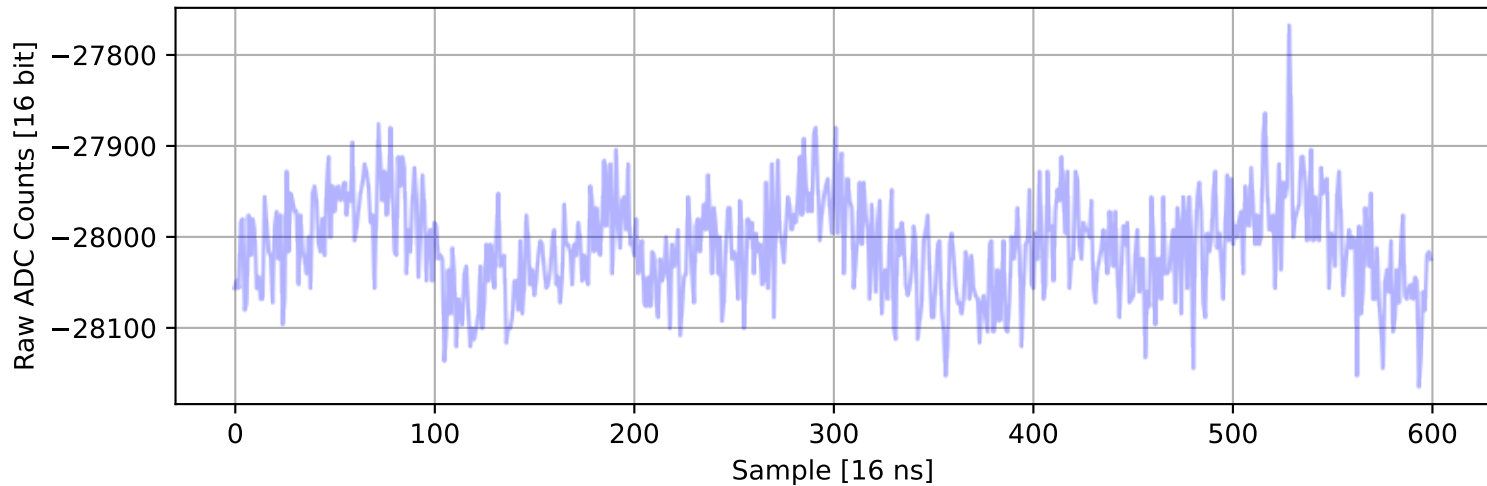
ADC 2, Channel 40, Event 902: Max Signal Waveform



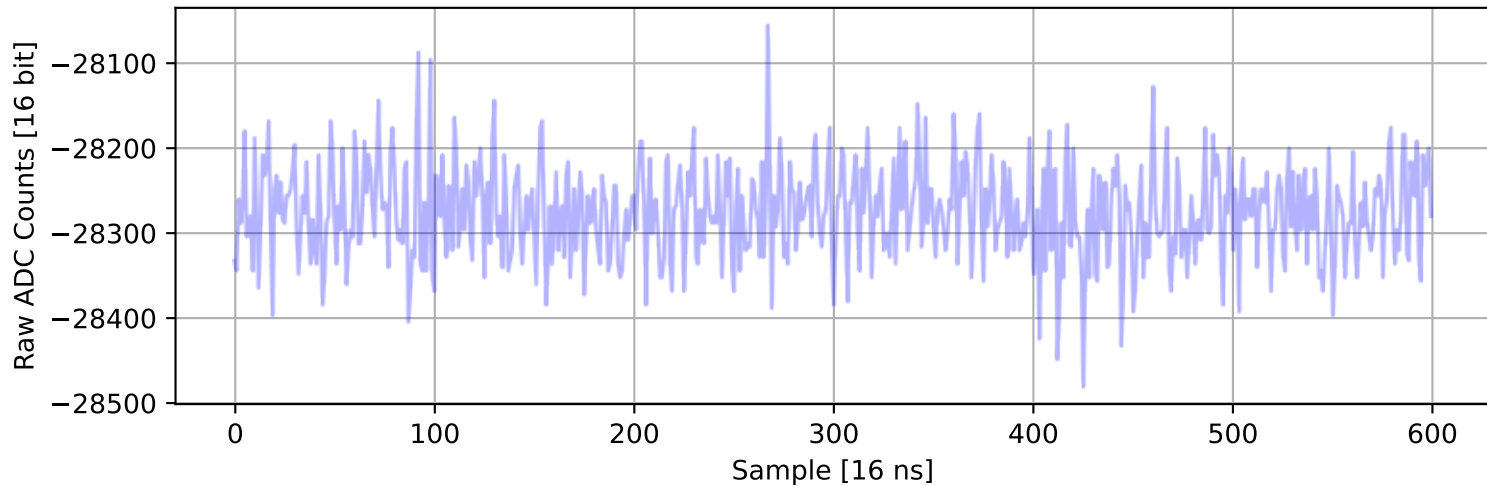
ADC 2, Channel 41, Event 121: Max Signal Waveform



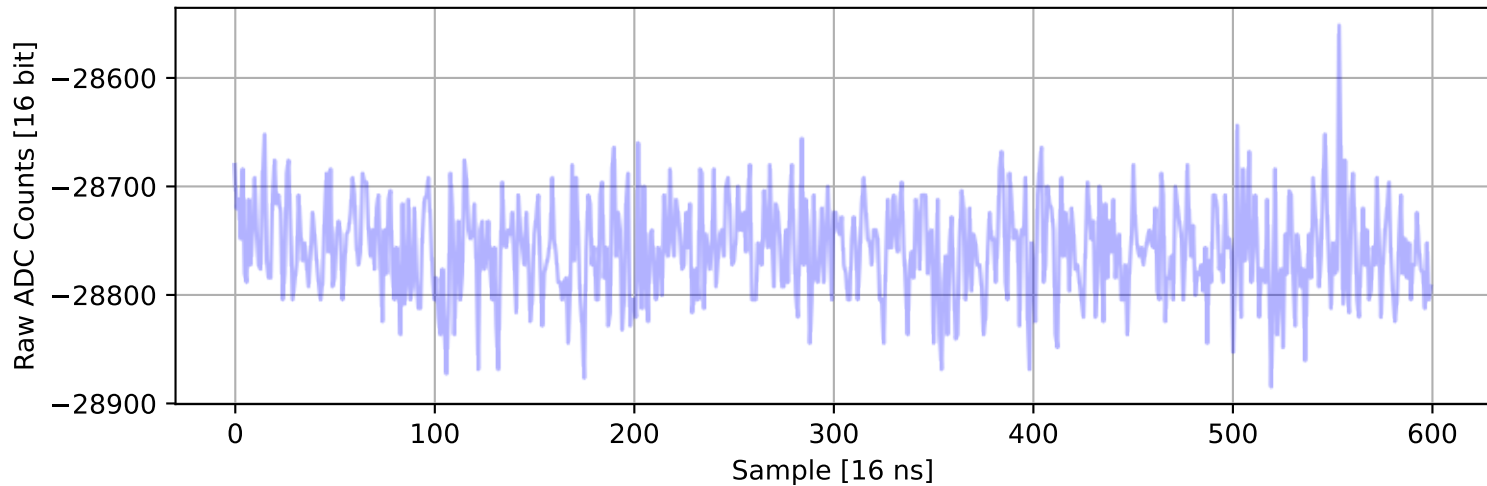
ADC 2, Channel 42, Event 1305: Max Signal Waveform



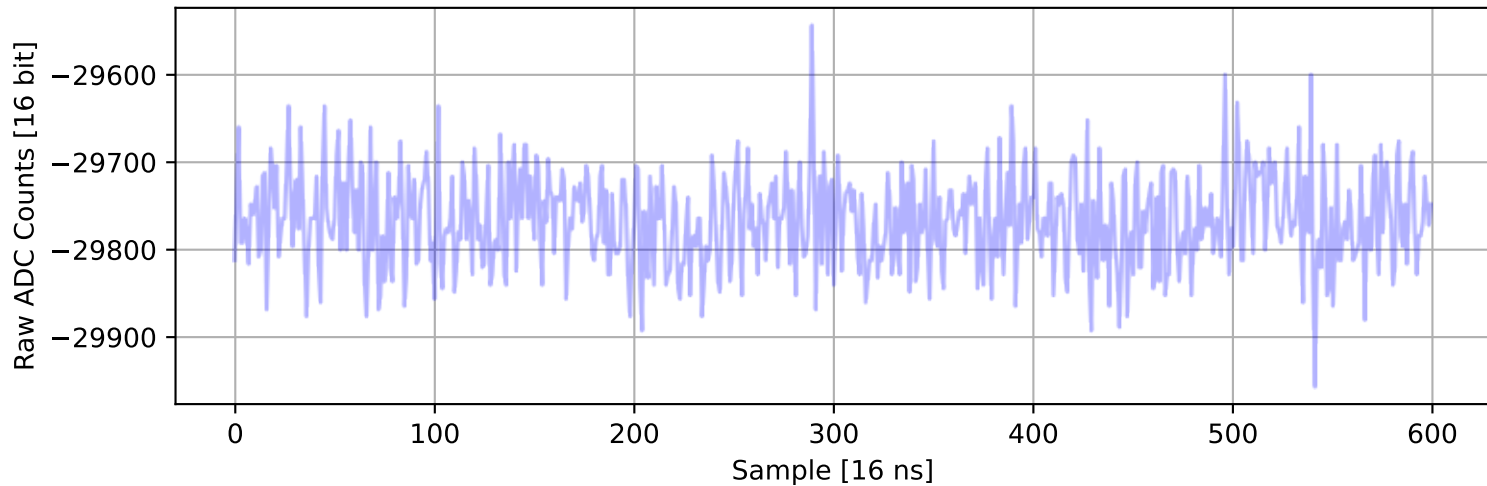
ADC 2, Channel 43, Event 5: Max Signal Waveform



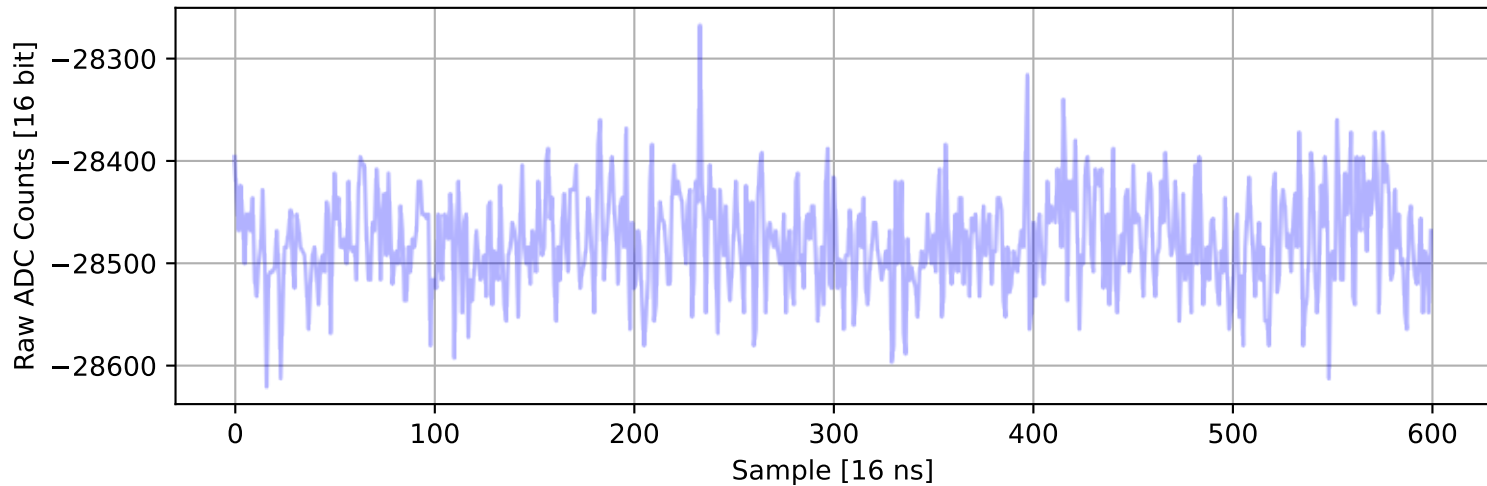
ADC 2, Channel 44, Event 30: Max Signal Waveform



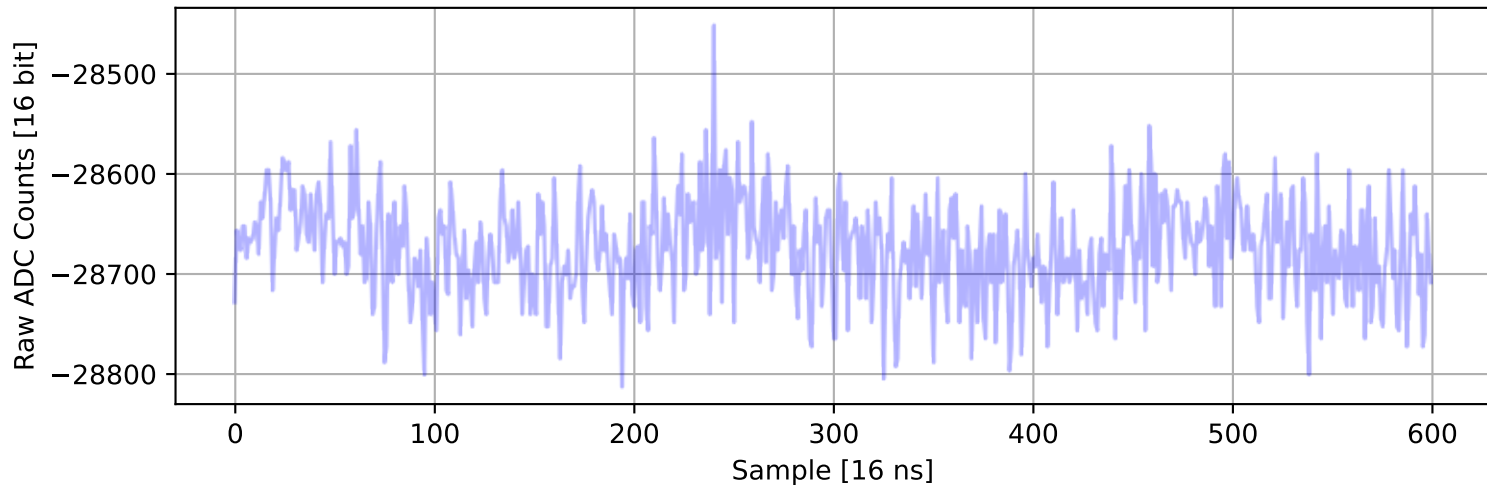
ADC 2, Channel 45, Event 602: Max Signal Waveform



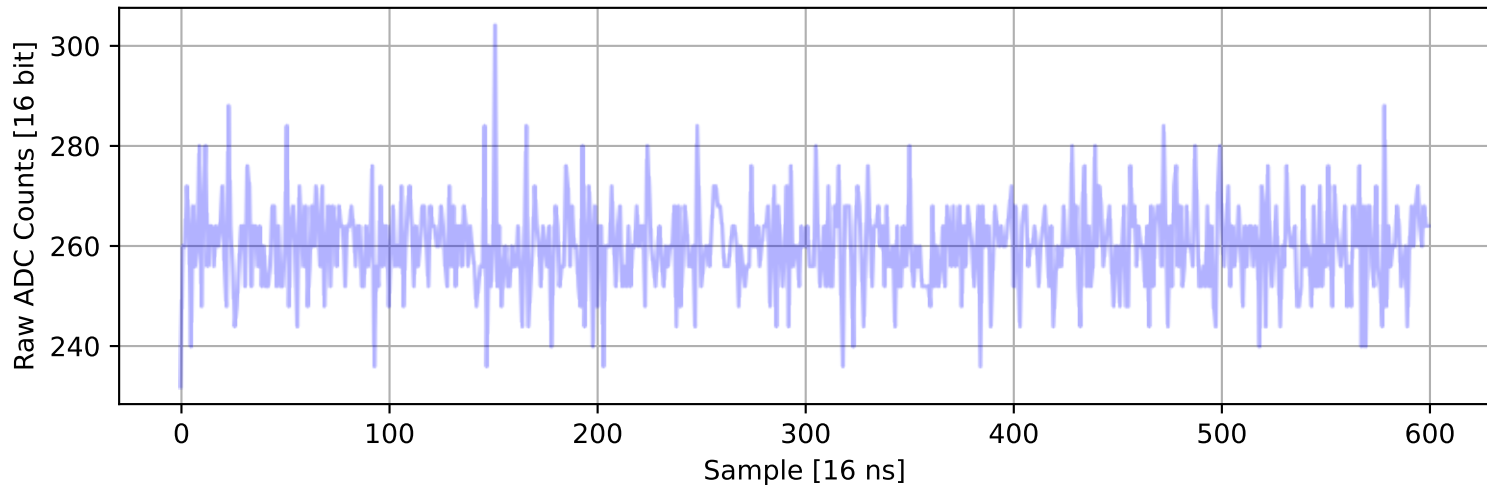
ADC 2, Channel 46, Event 1666: Max Signal Waveform



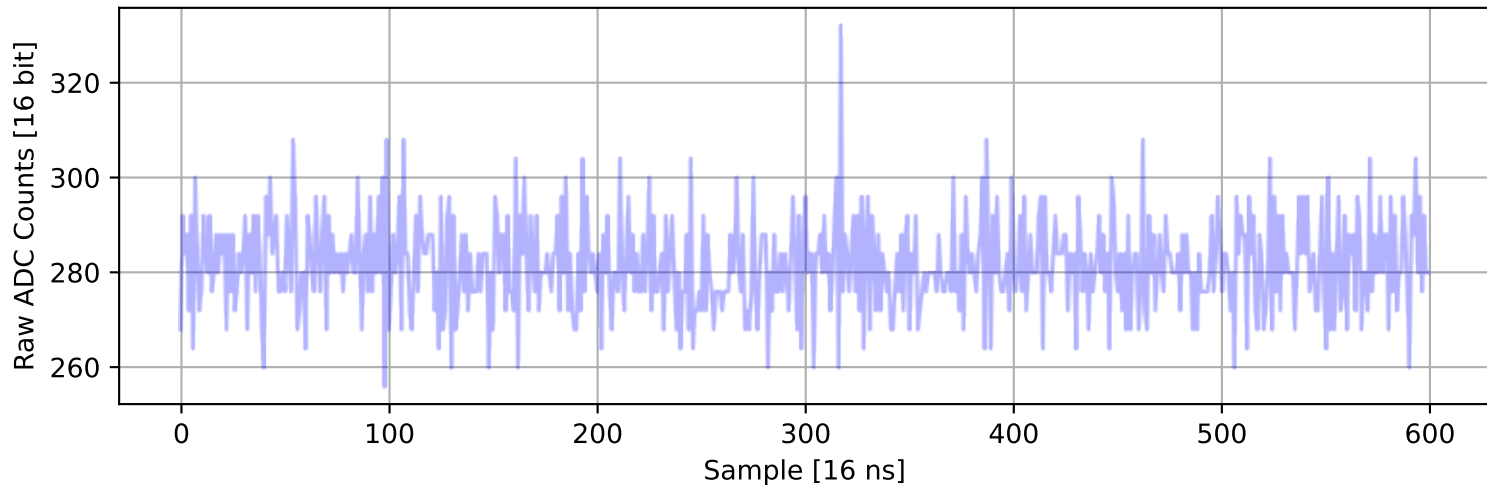
ADC 2, Channel 47, Event 1191: Max Signal Waveform



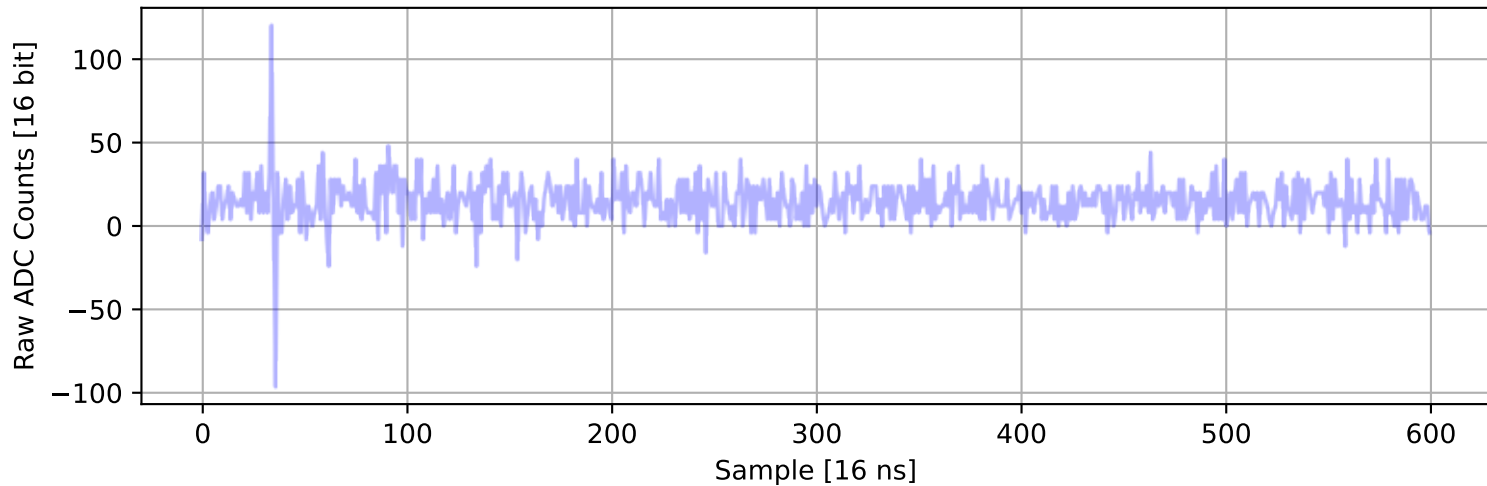
ADC 2, Channel 48, Event 98: Max Signal Waveform



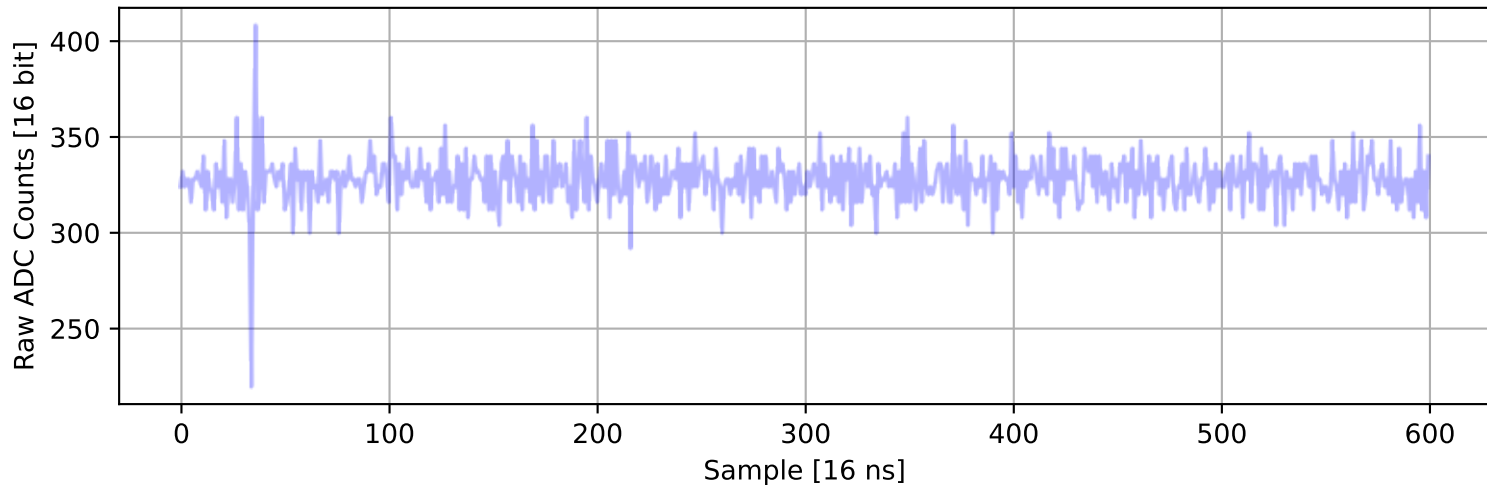
ADC 2, Channel 49, Event 885: Max Signal Waveform



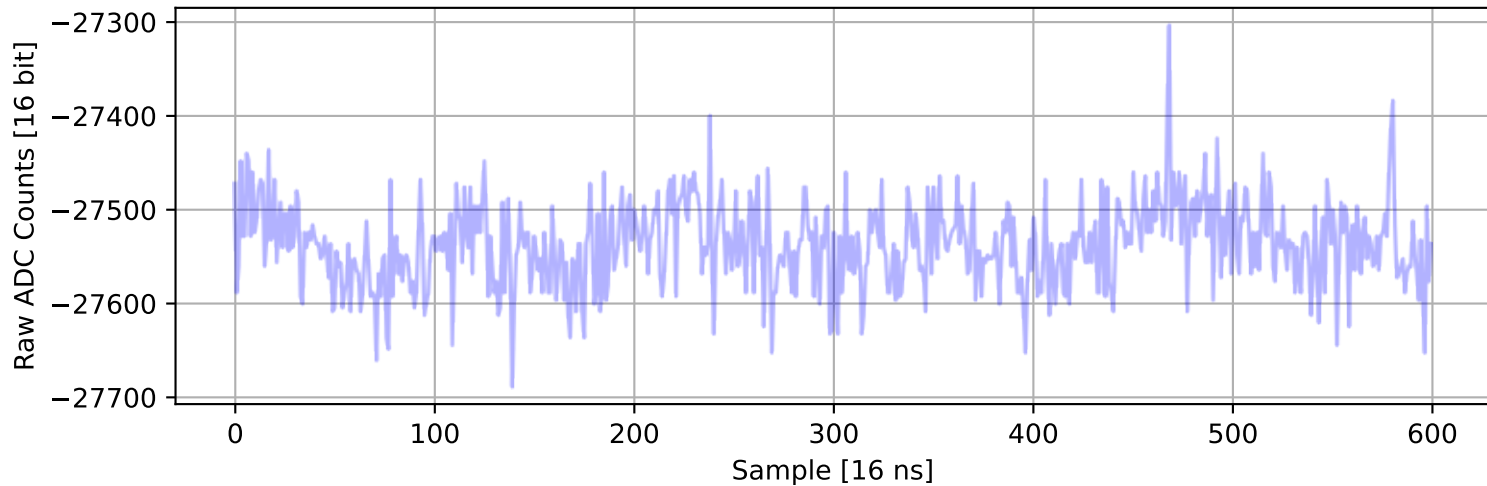
ADC 2, Channel 50, Event 1697: Max Signal Waveform



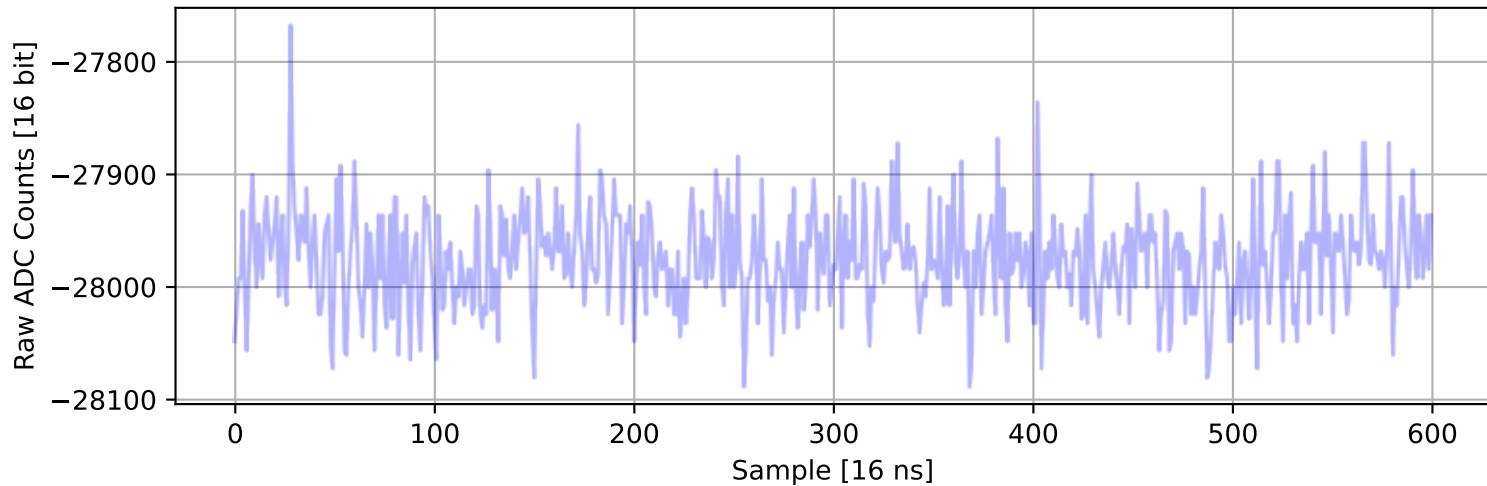
ADC 2, Channel 51, Event 658: Max Signal Waveform



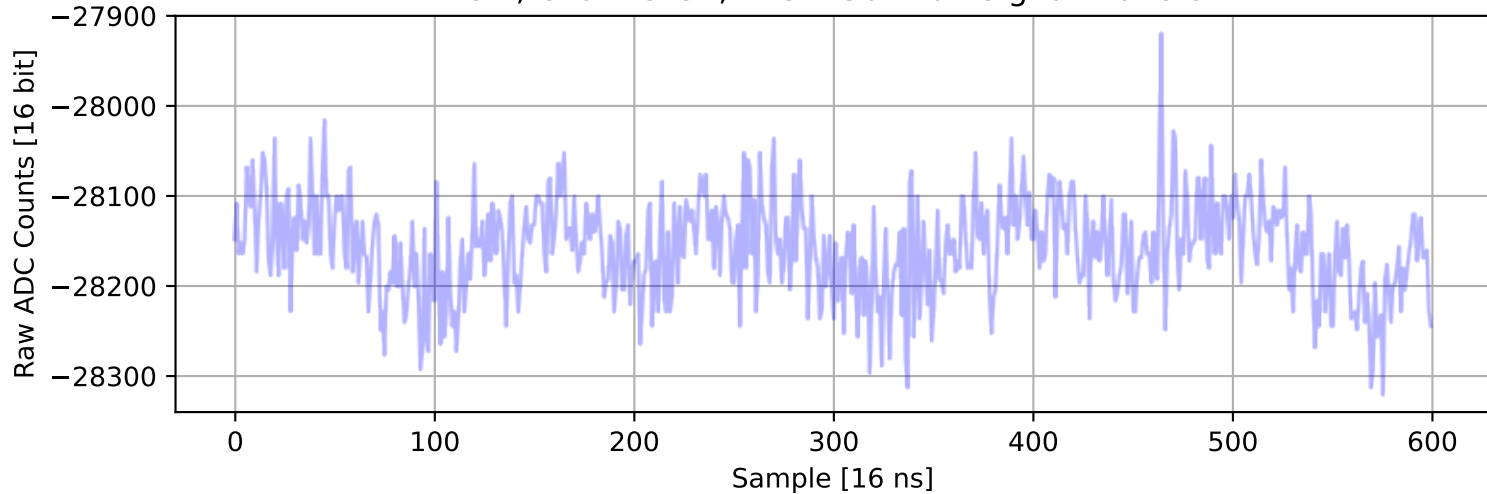
ADC 2, Channel 52, Event 1434: Max Signal Waveform



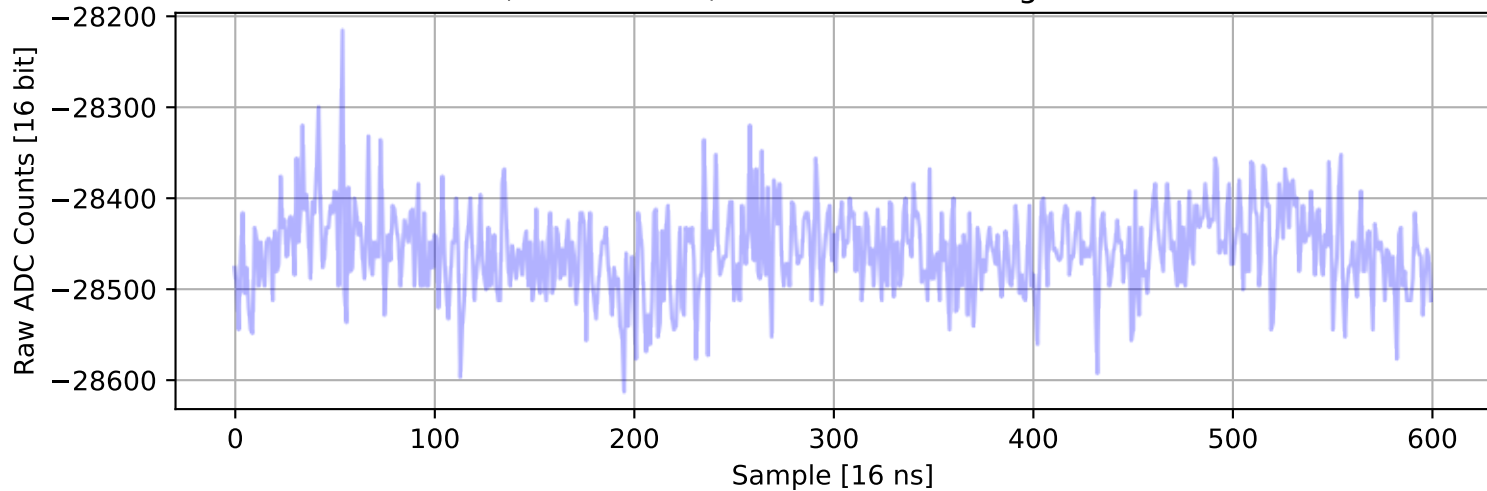
ADC 2, Channel 53, Event 1479: Max Signal Waveform



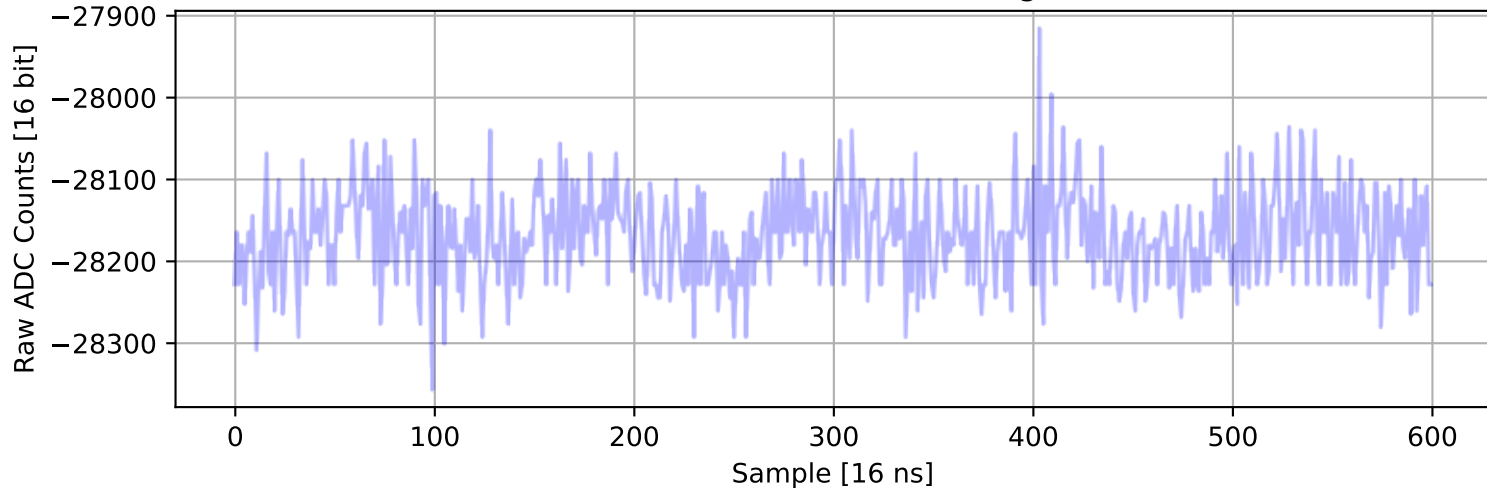
ADC 2, Channel 54, Event 36: Max Signal Waveform



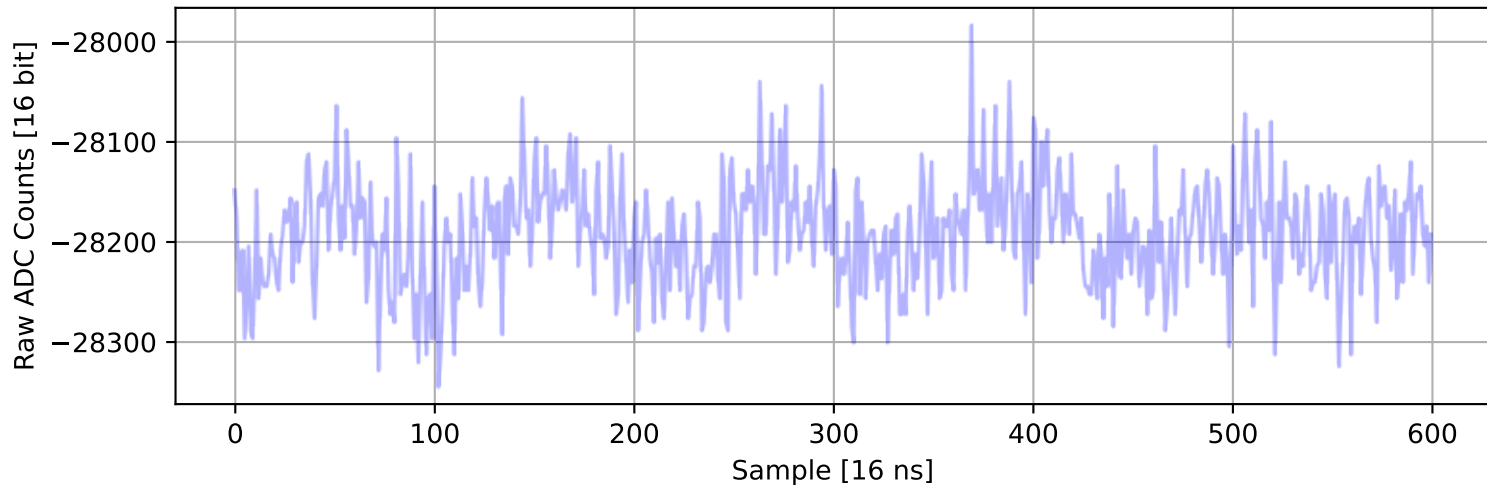
ADC 2, Channel 55, Event 271: Max Signal Waveform



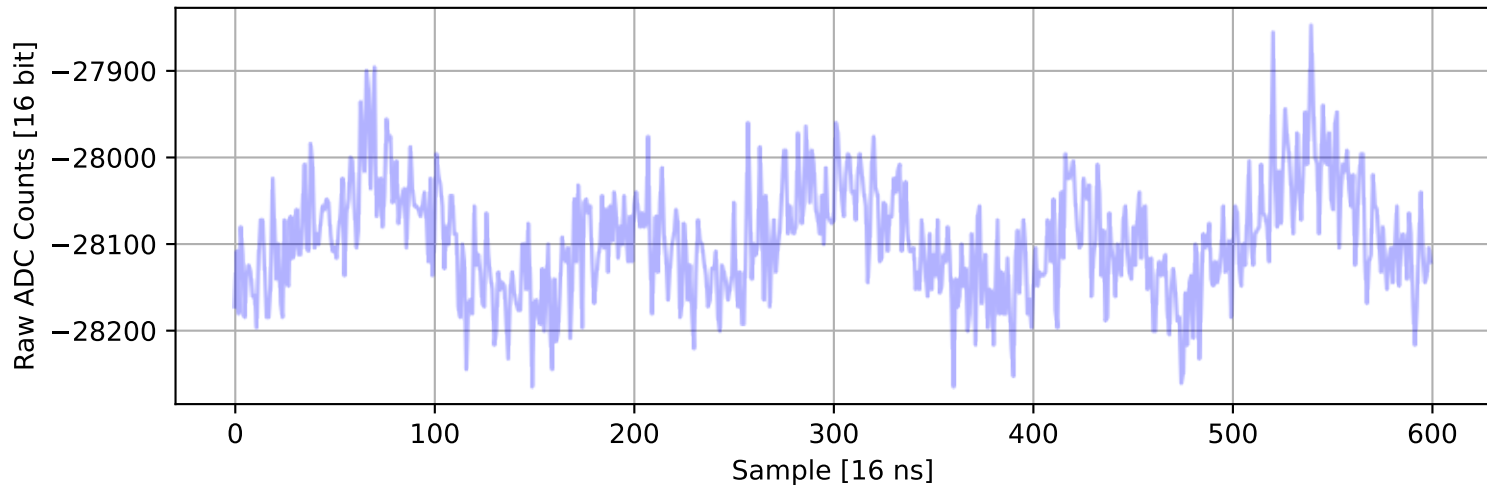
ADC 2, Channel 56, Event 167: Max Signal Waveform



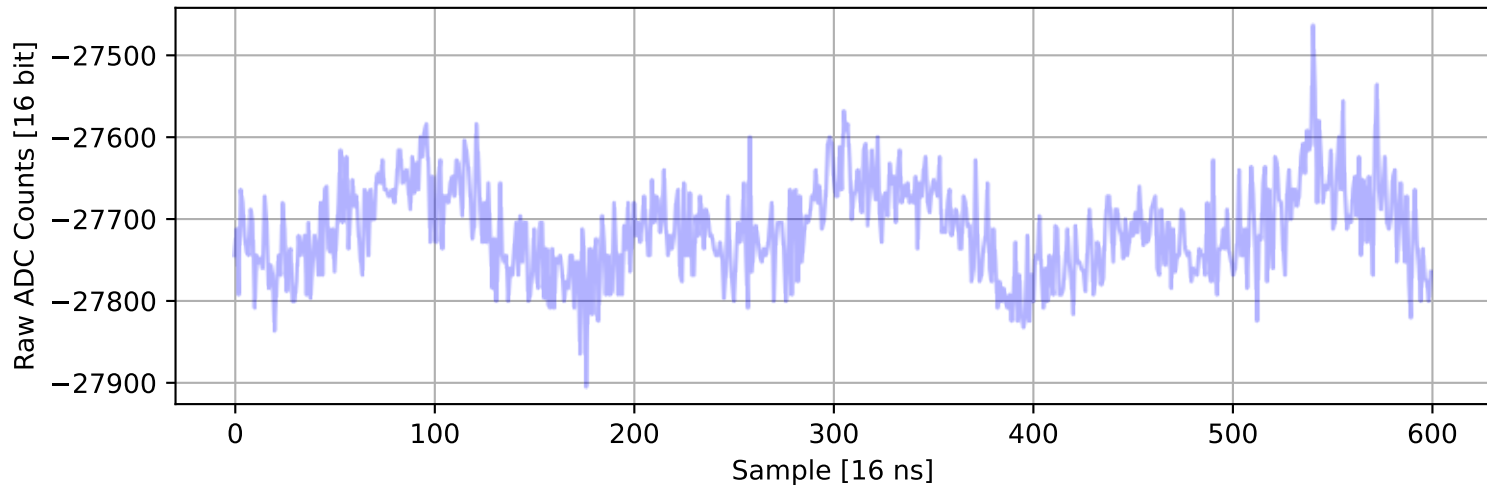
ADC 2, Channel 57, Event 166: Max Signal Waveform



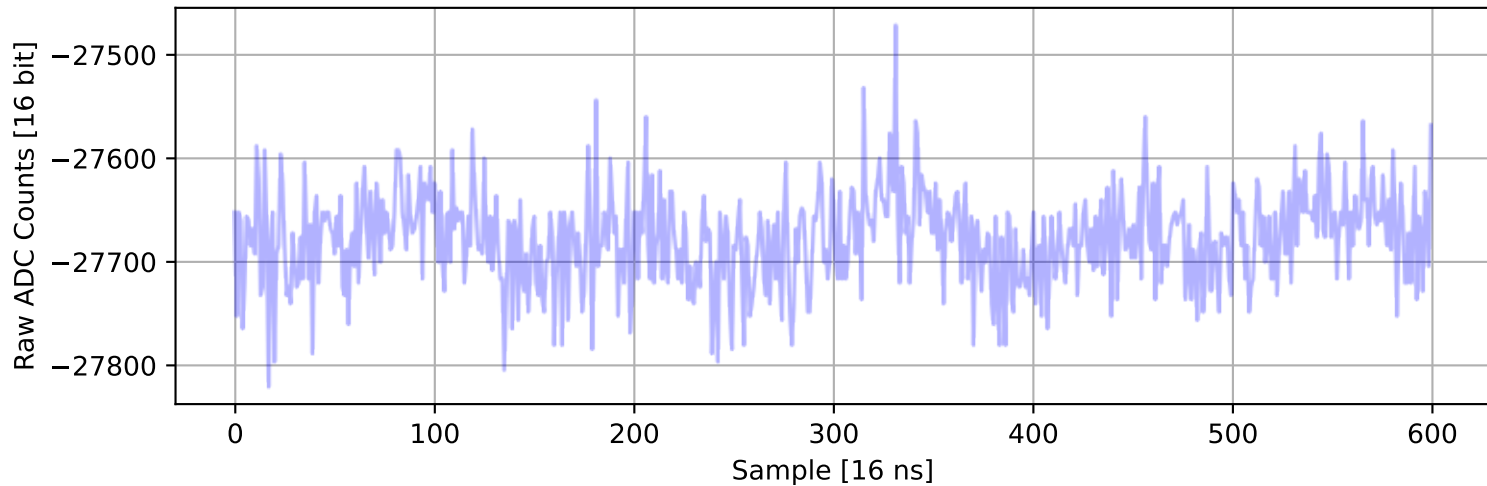
ADC 2, Channel 58, Event 812: Max Signal Waveform



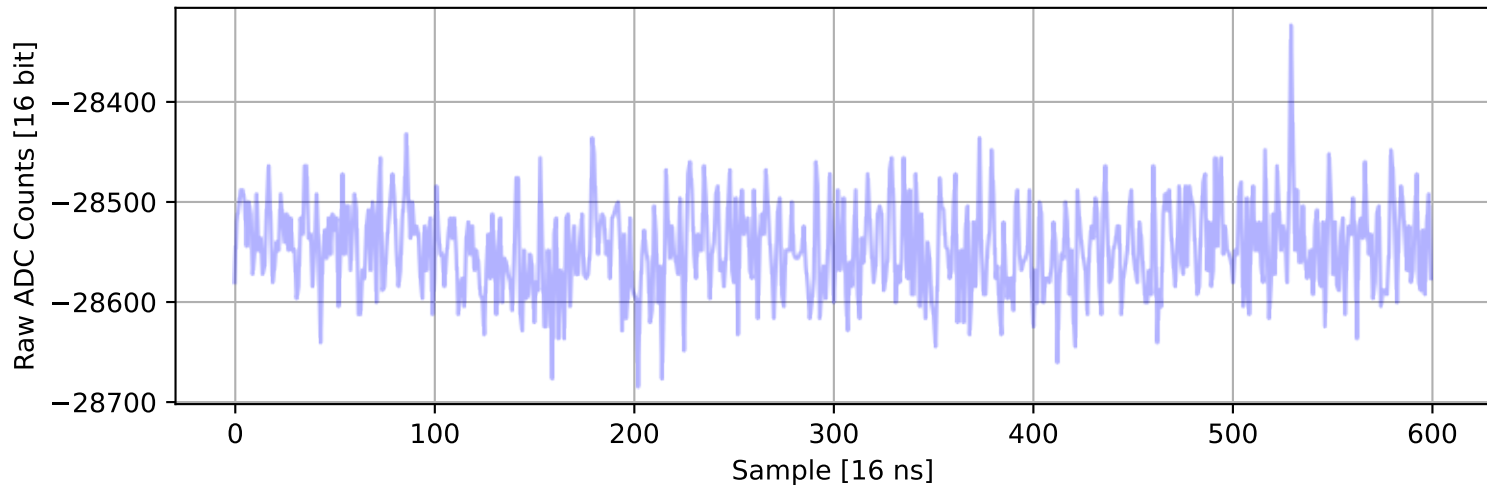
ADC 2, Channel 59, Event 968: Max Signal Waveform



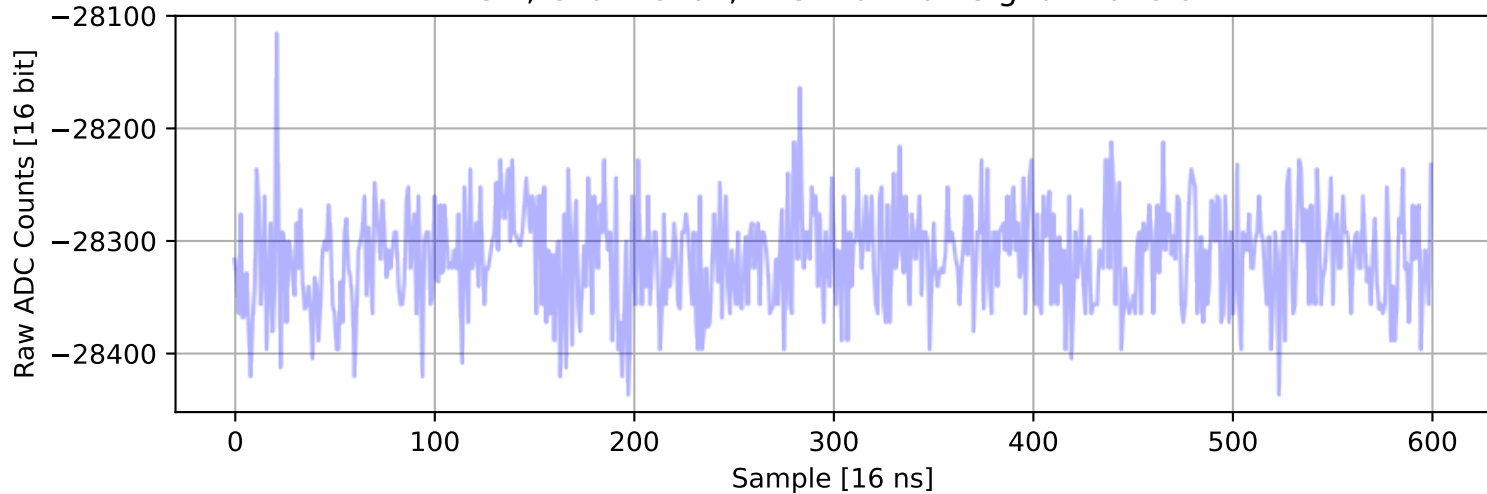
ADC 2, Channel 60, Event 541: Max Signal Waveform



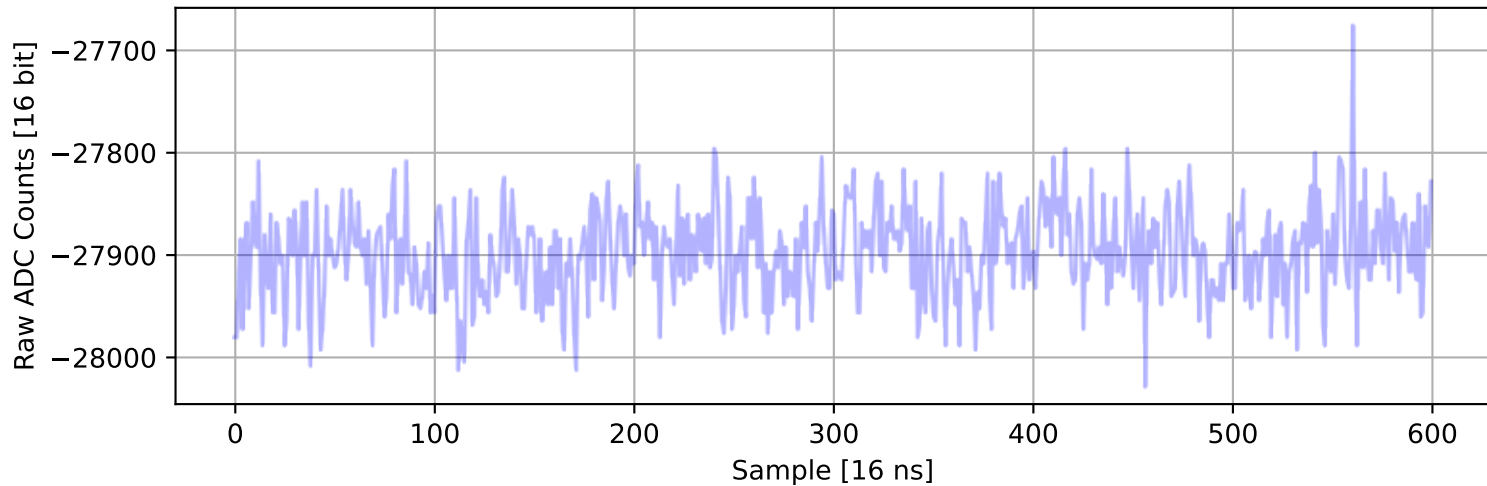
ADC 2, Channel 61, Event 55: Max Signal Waveform



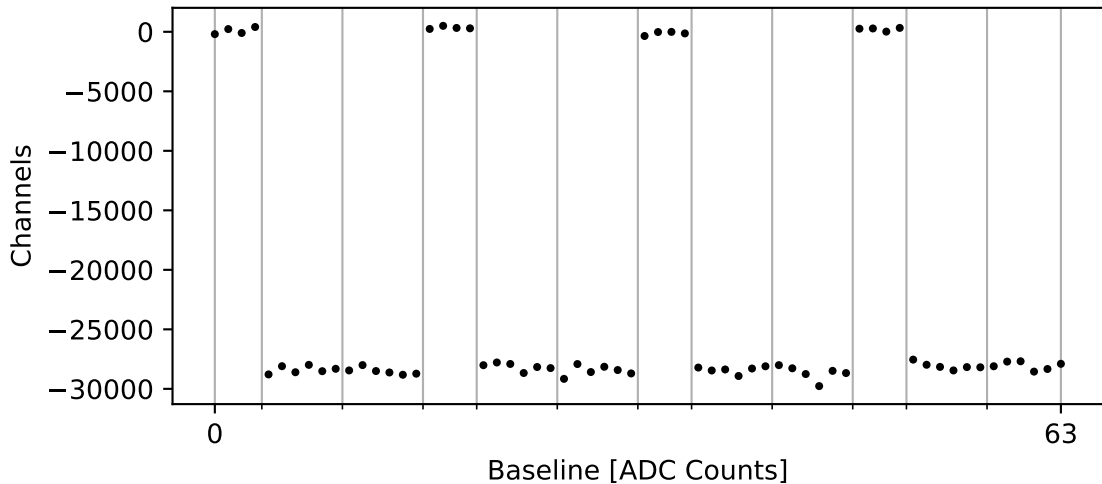
ADC 2, Channel 62, Event 0: Max Signal Waveform



ADC 2, Channel 63, Event 757: Max Signal Waveform



ADC 2: Baseline Distribution



ADC 2: Max Signal Distribution

