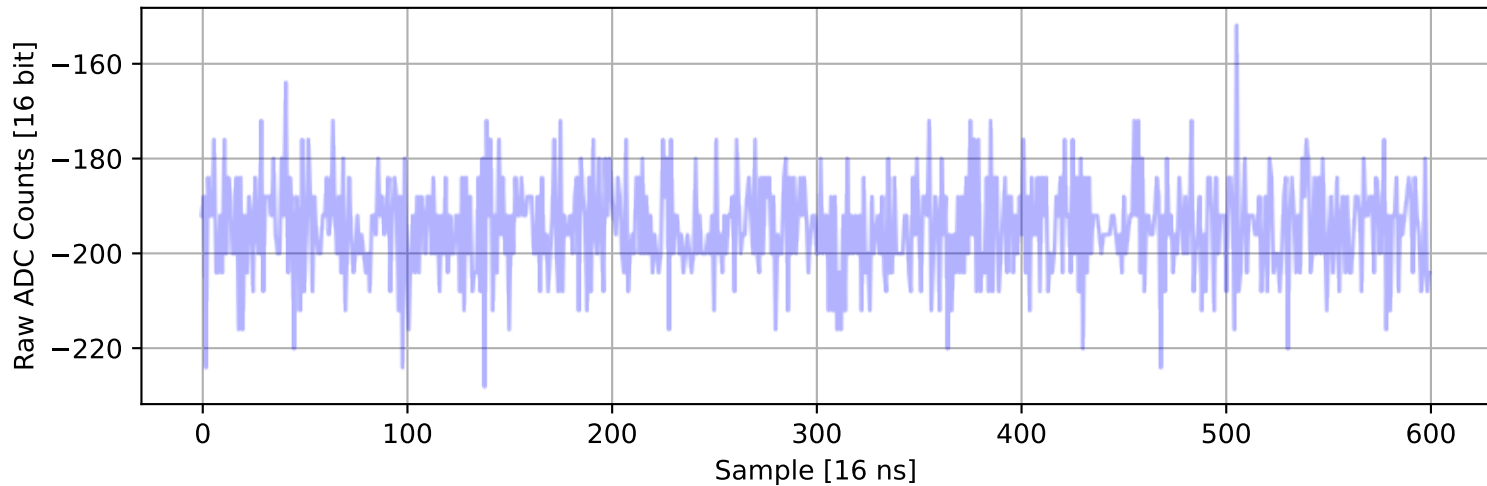
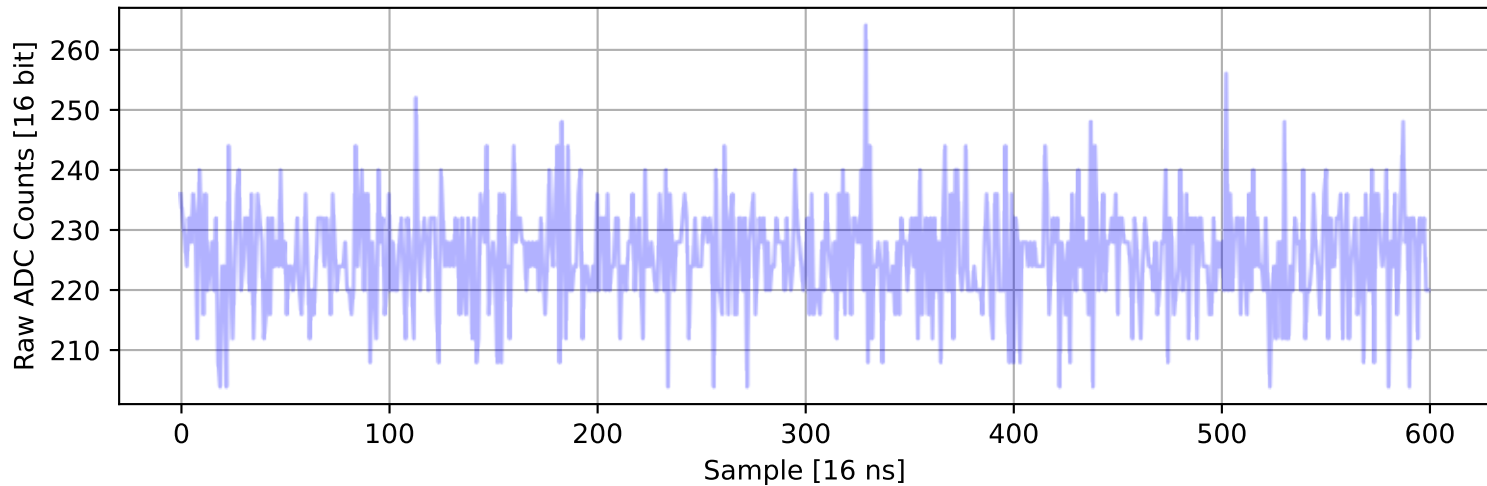


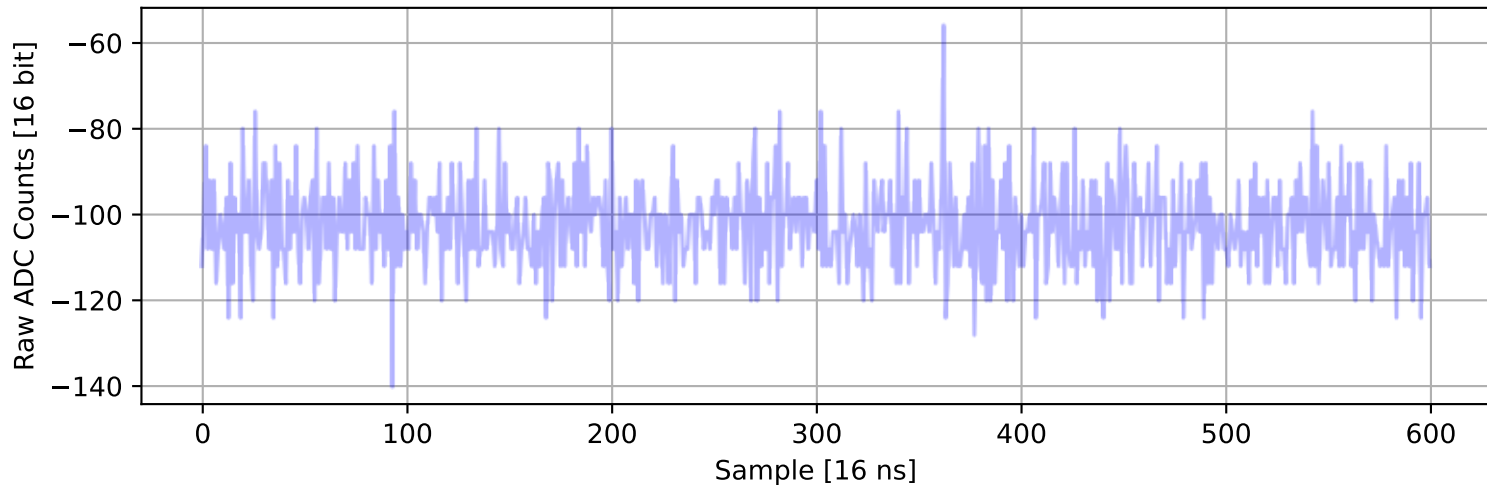
ADC 2, Channel 0, Event 25: Max Signal Waveform



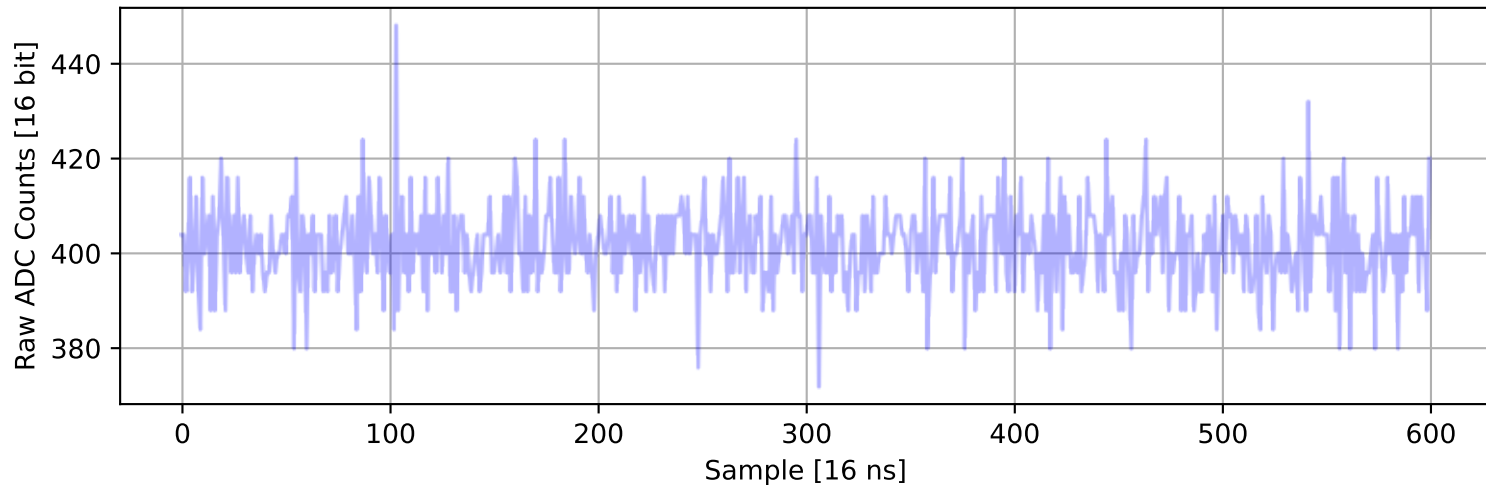
ADC 2, Channel 1, Event 121: Max Signal Waveform



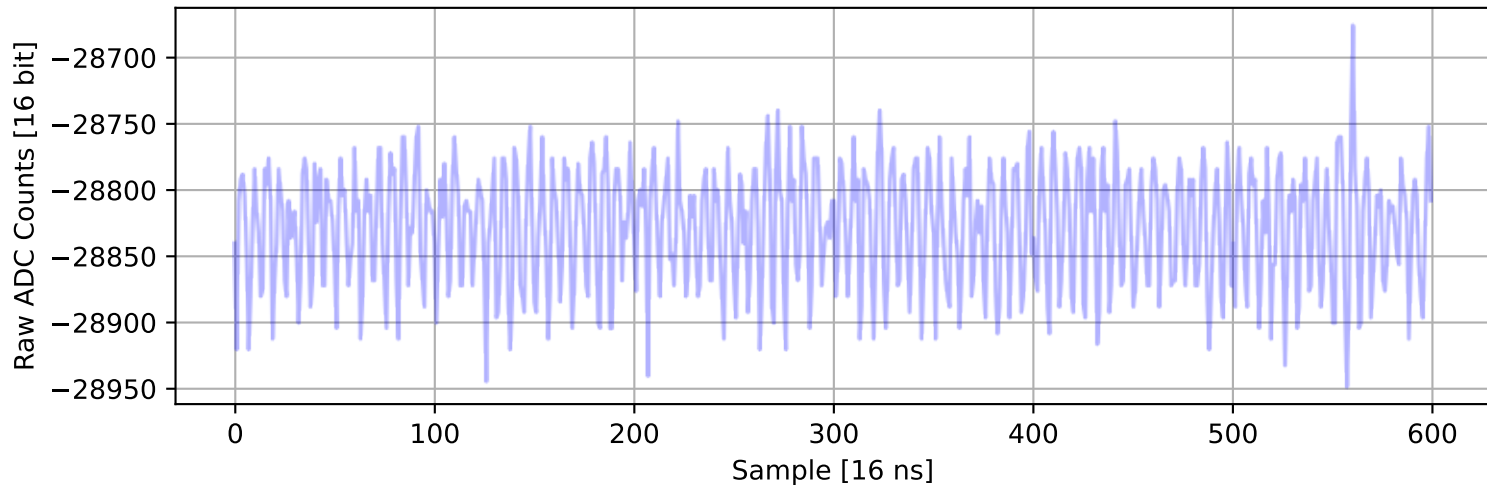
ADC 2, Channel 2, Event 100: Max Signal Waveform



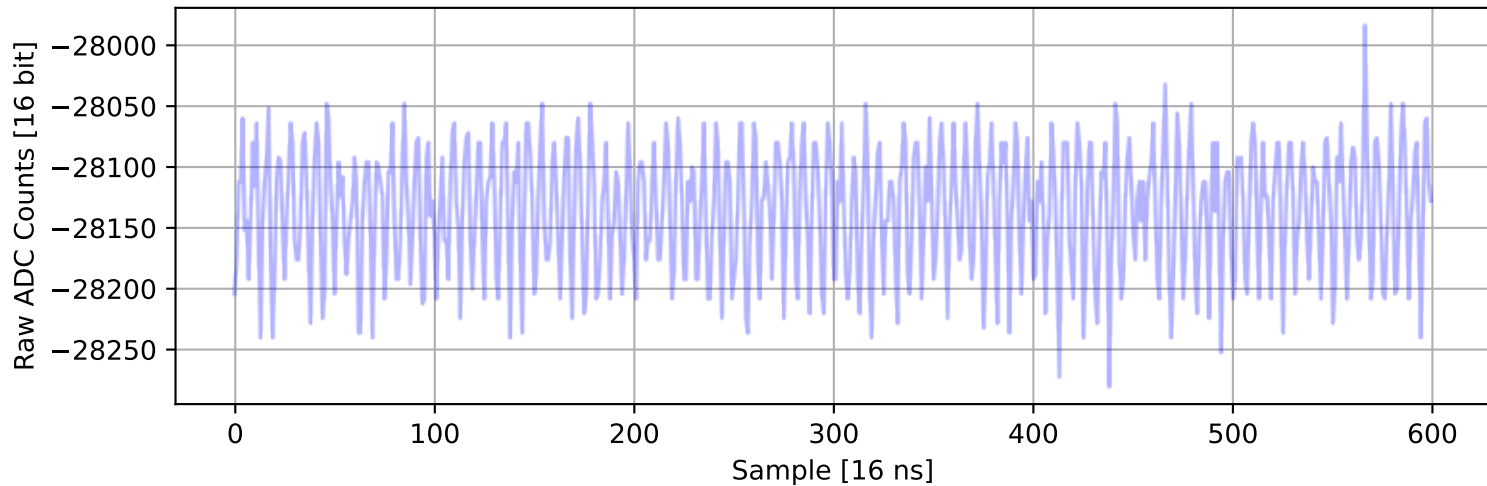
ADC 2, Channel 3, Event 130: Max Signal Waveform



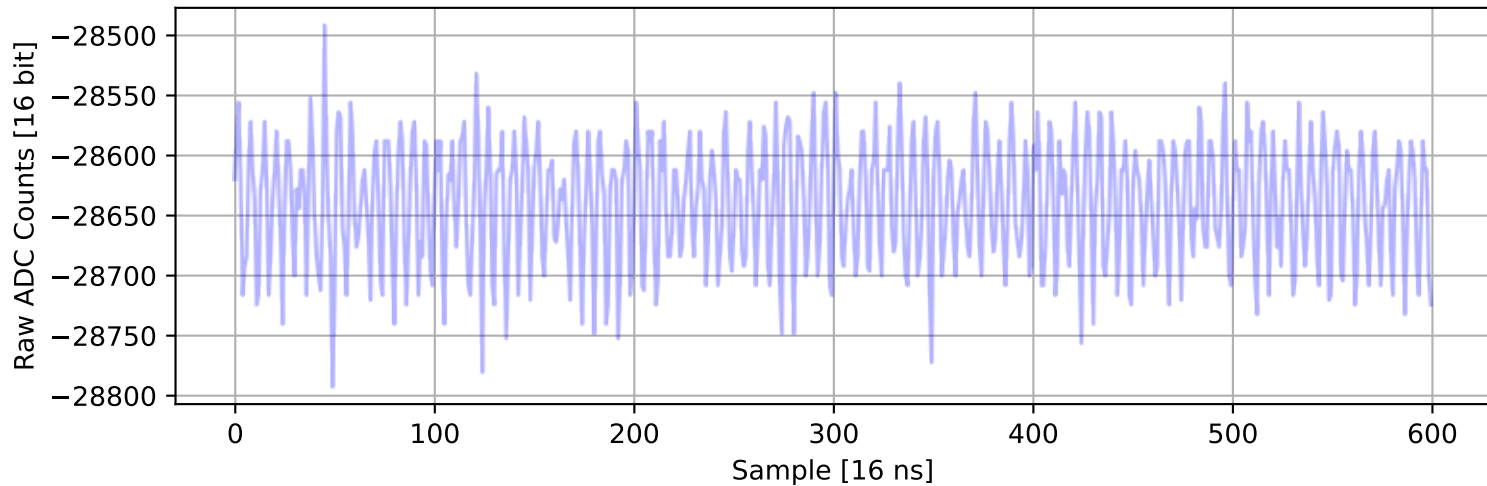
ADC 2, Channel 4, Event 459: Max Signal Waveform



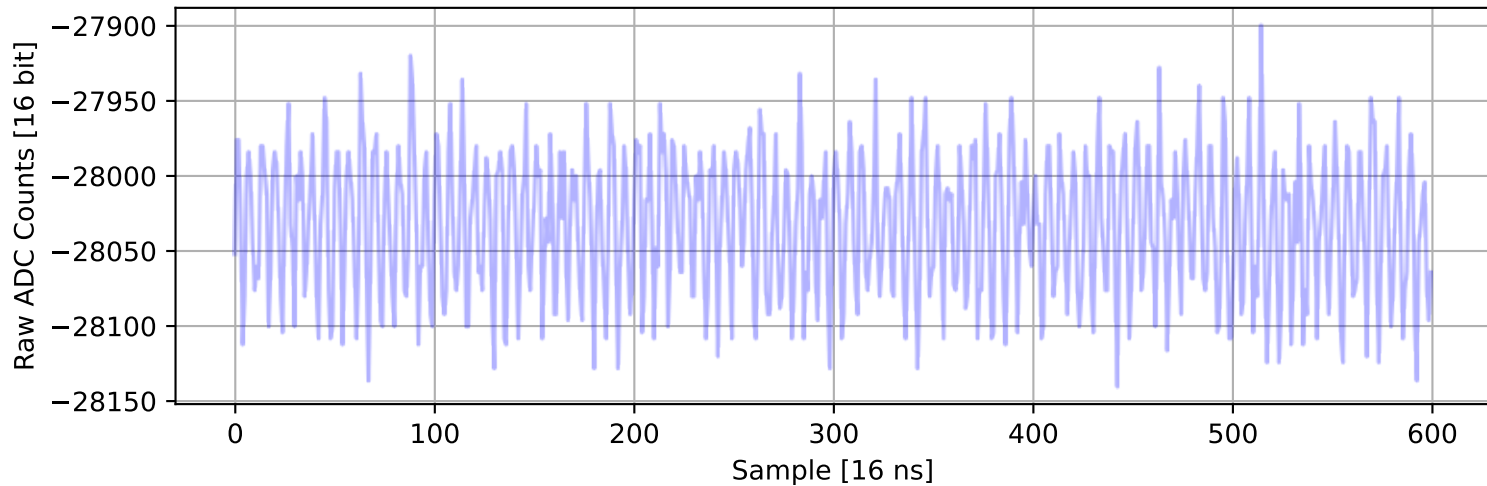
ADC 2, Channel 5, Event 1727: Max Signal Waveform



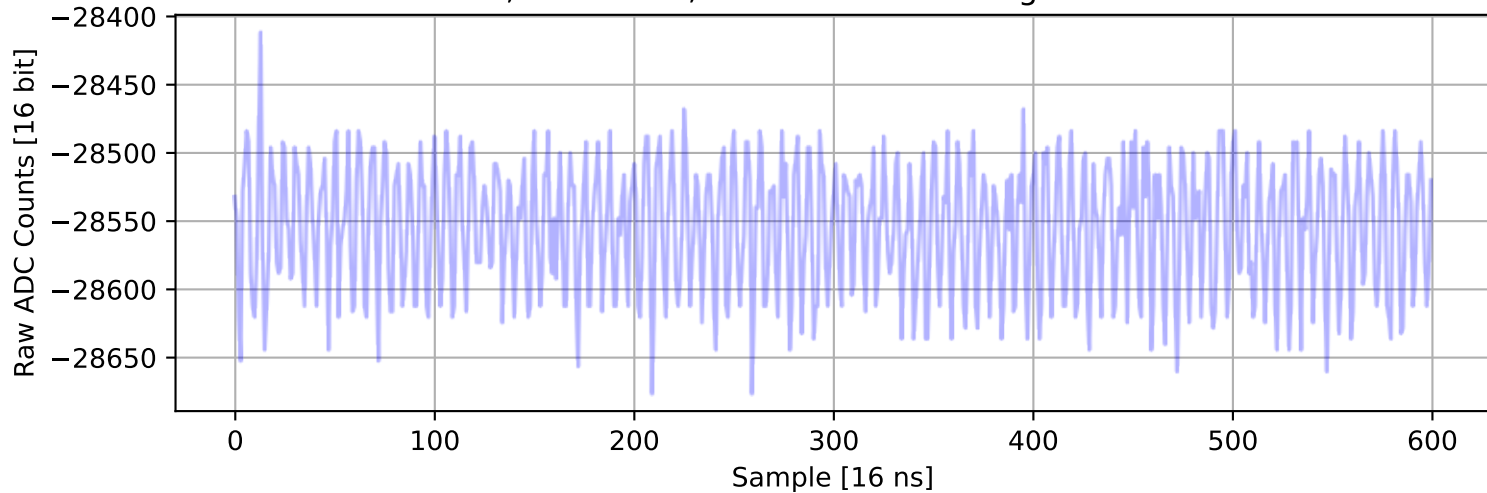
ADC 2, Channel 6, Event 1175: Max Signal Waveform



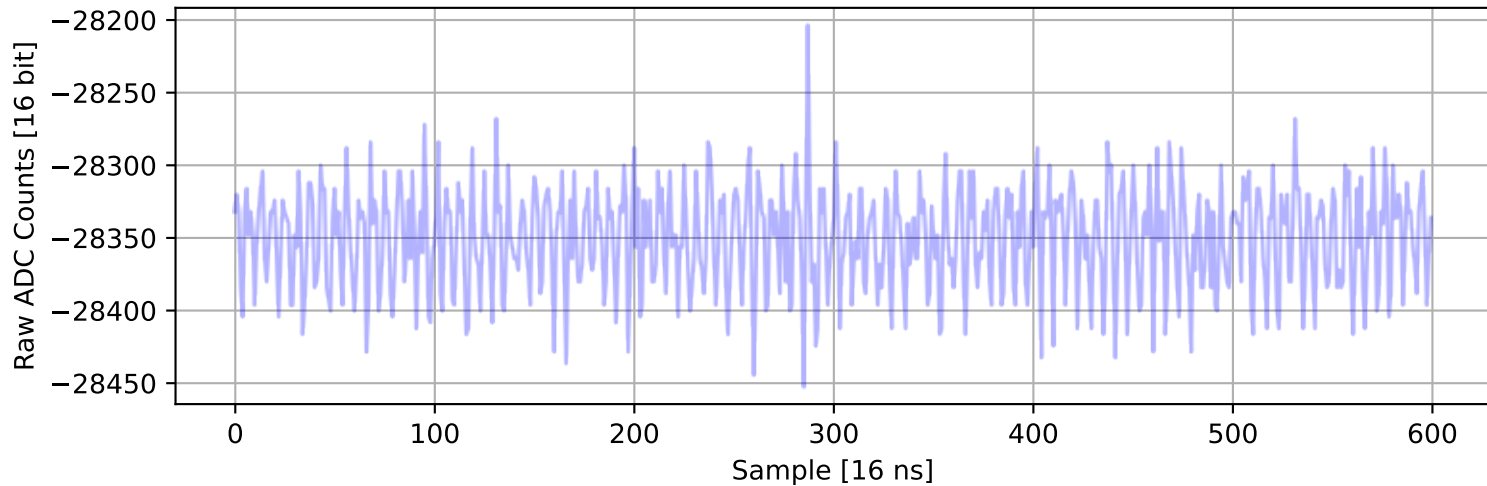
ADC 2, Channel 7, Event 366: Max Signal Waveform



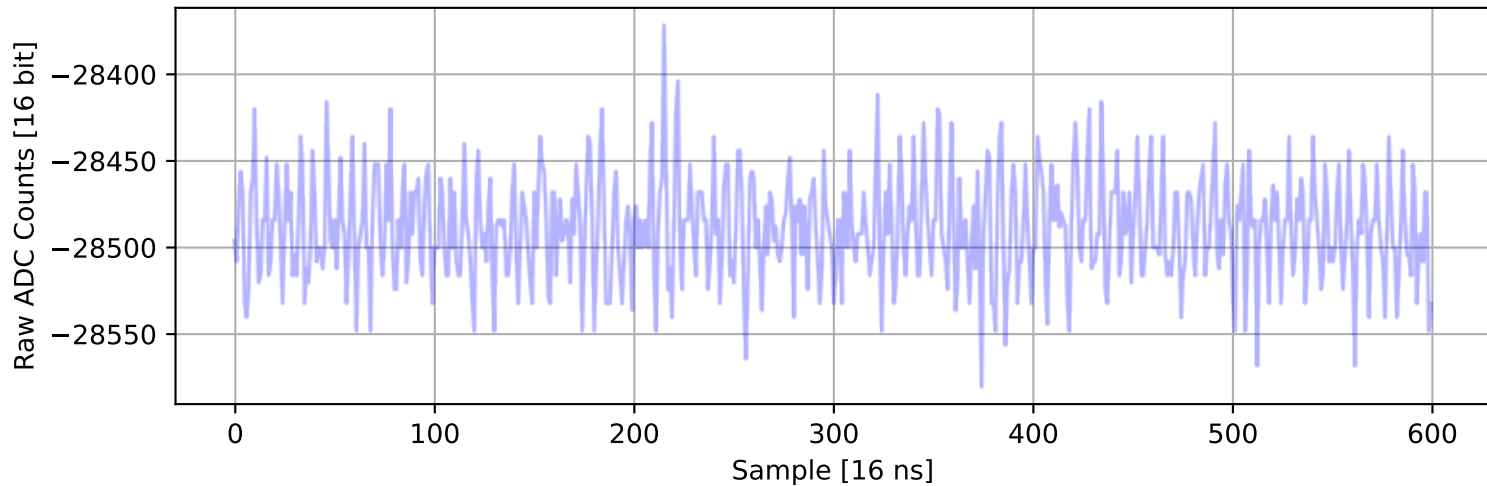
ADC 2, Channel 8, Event 2805: Max Signal Waveform



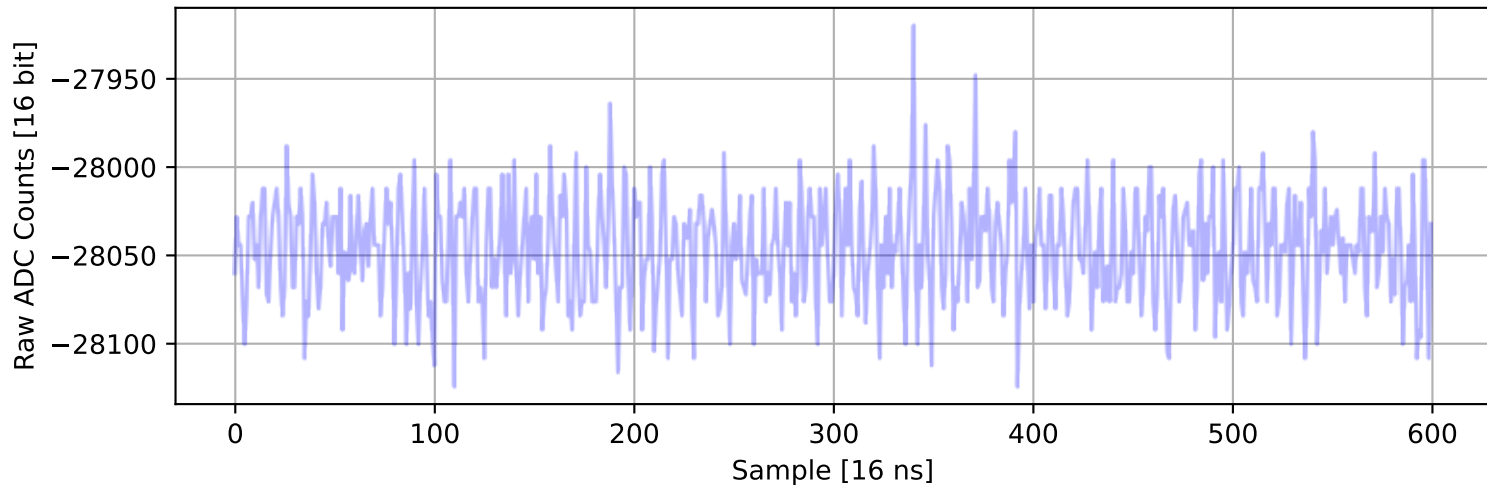
ADC 2, Channel 9, Event 3096: Max Signal Waveform



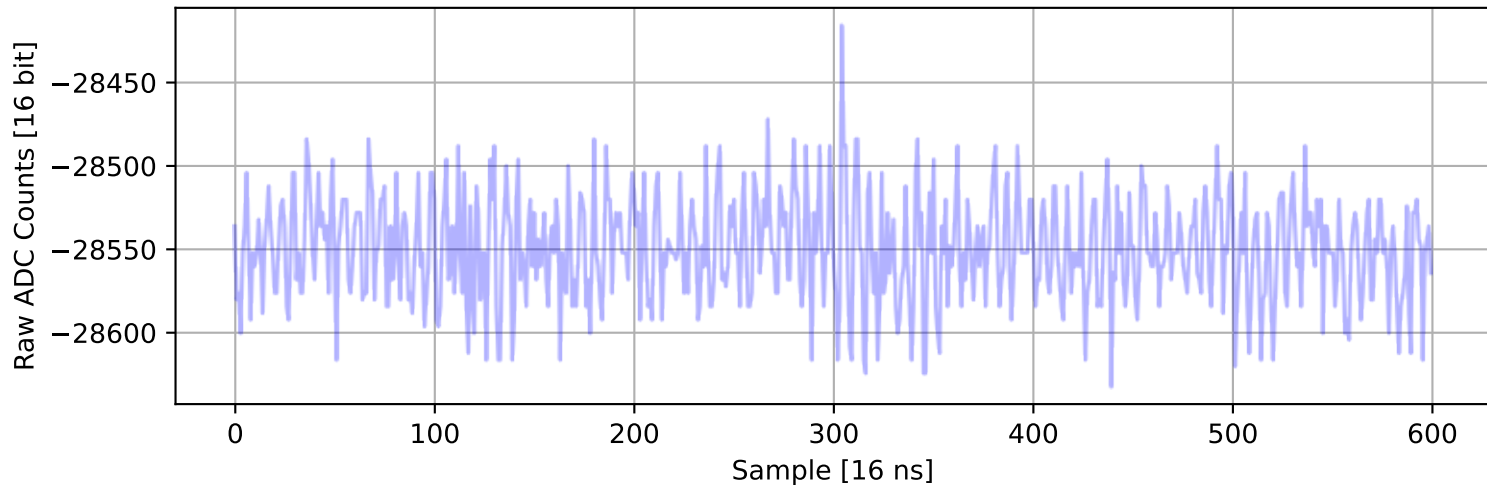
ADC 2, Channel 10, Event 104: Max Signal Waveform



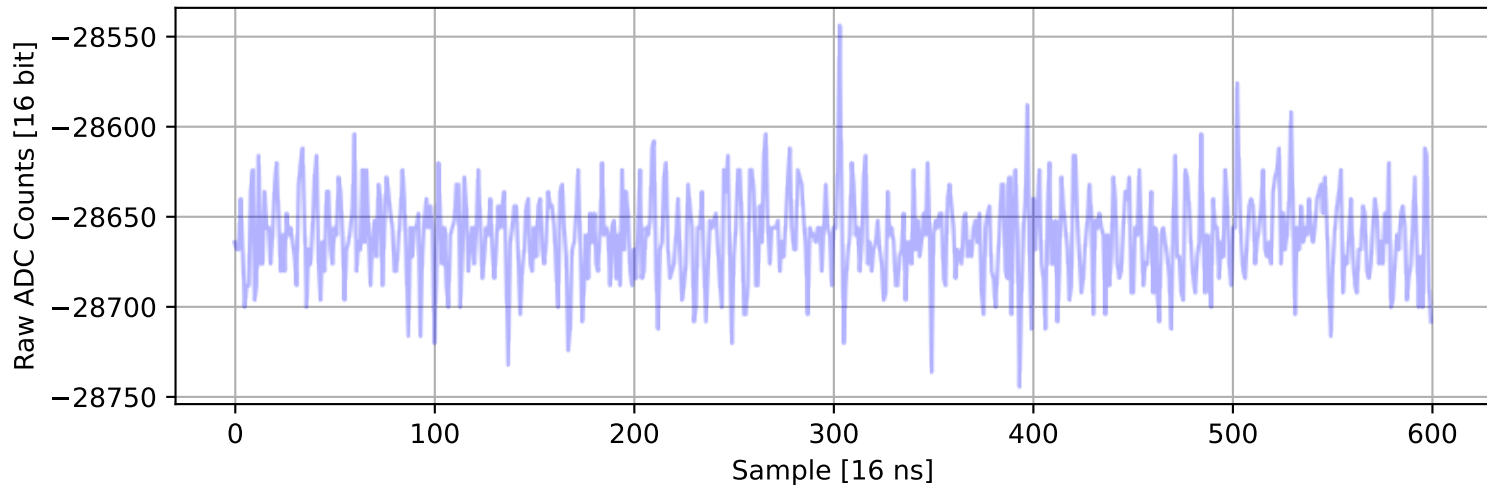
ADC 2, Channel 11, Event 994: Max Signal Waveform



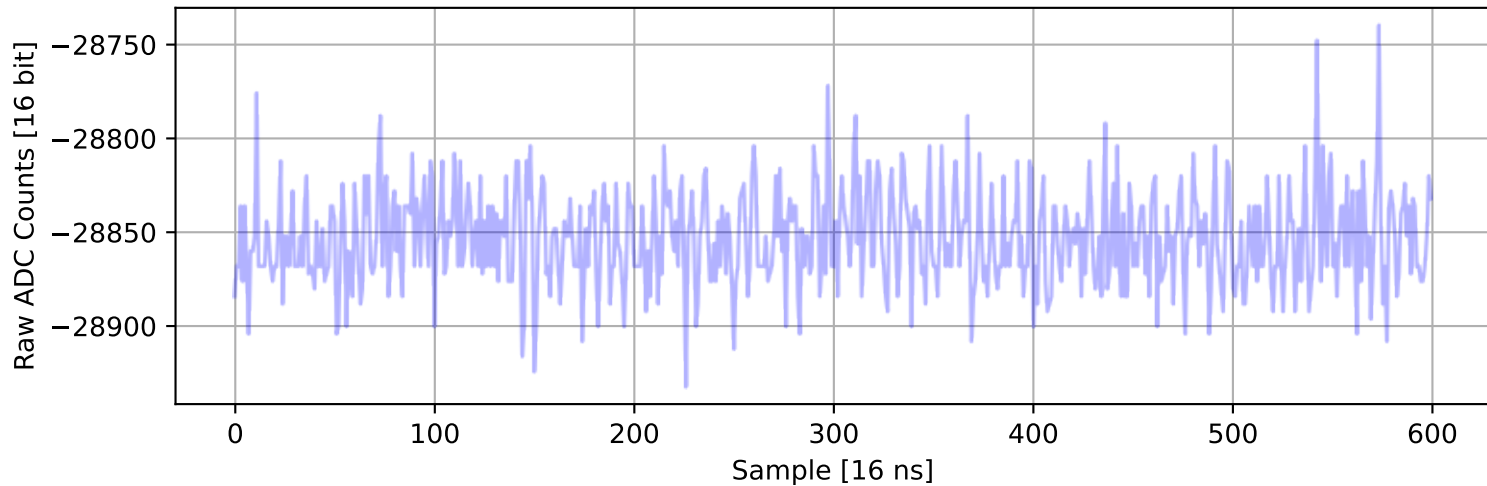
ADC 2, Channel 12, Event 2437: Max Signal Waveform



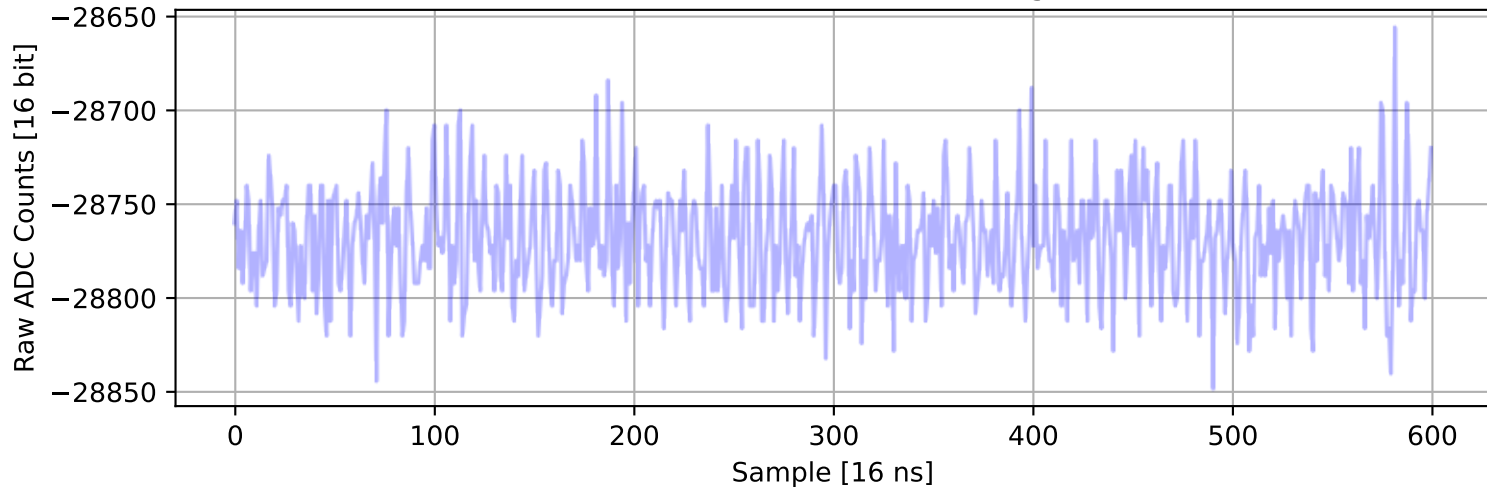
ADC 2, Channel 13, Event 388: Max Signal Waveform



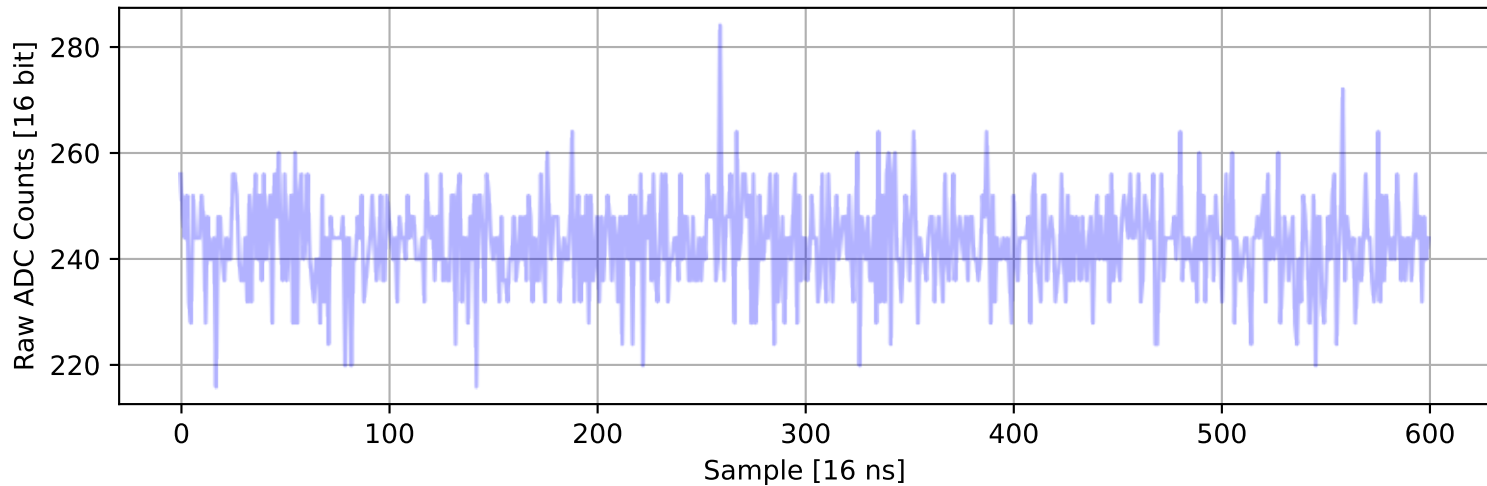
ADC 2, Channel 14, Event 86: Max Signal Waveform



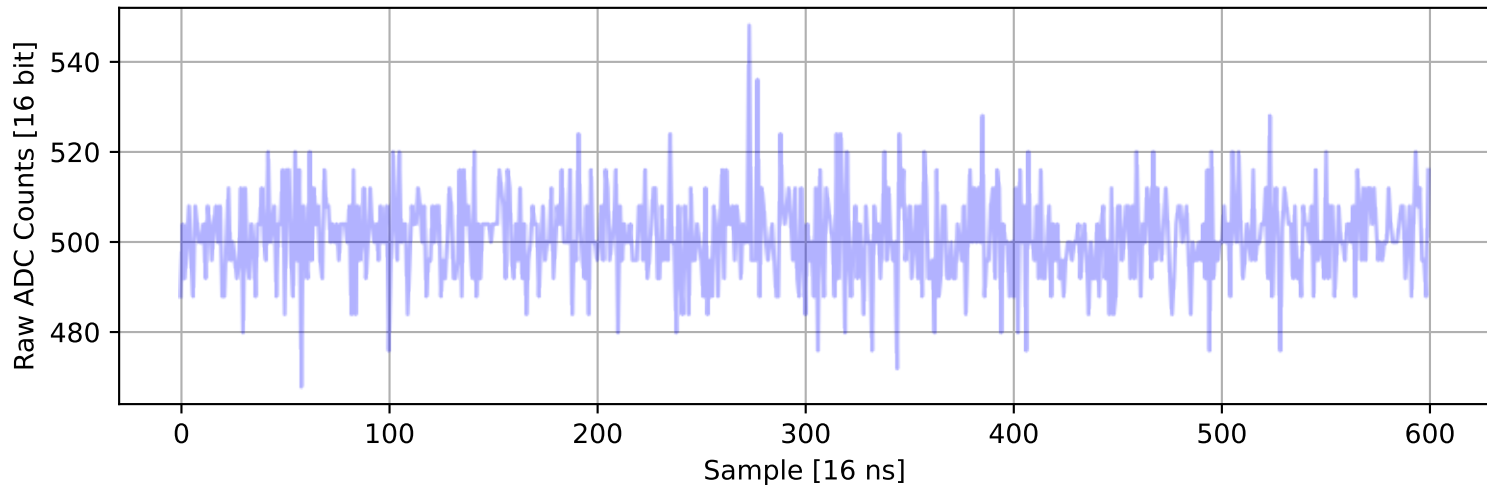
ADC 2, Channel 15, Event 1769: Max Signal Waveform



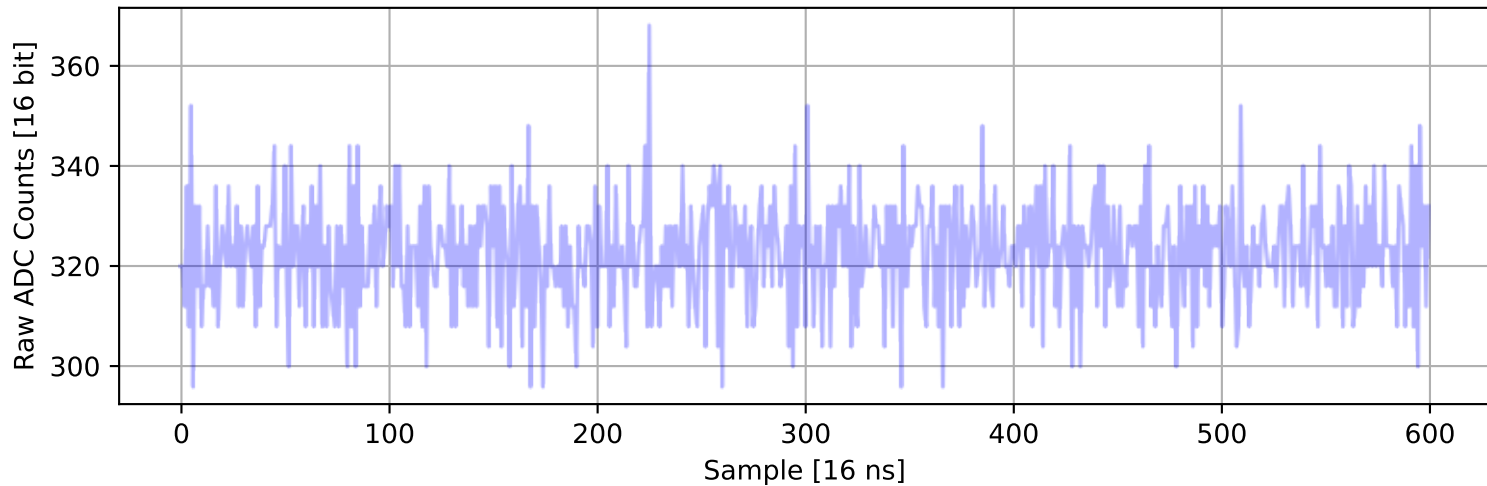
ADC 2, Channel 16, Event 226: Max Signal Waveform



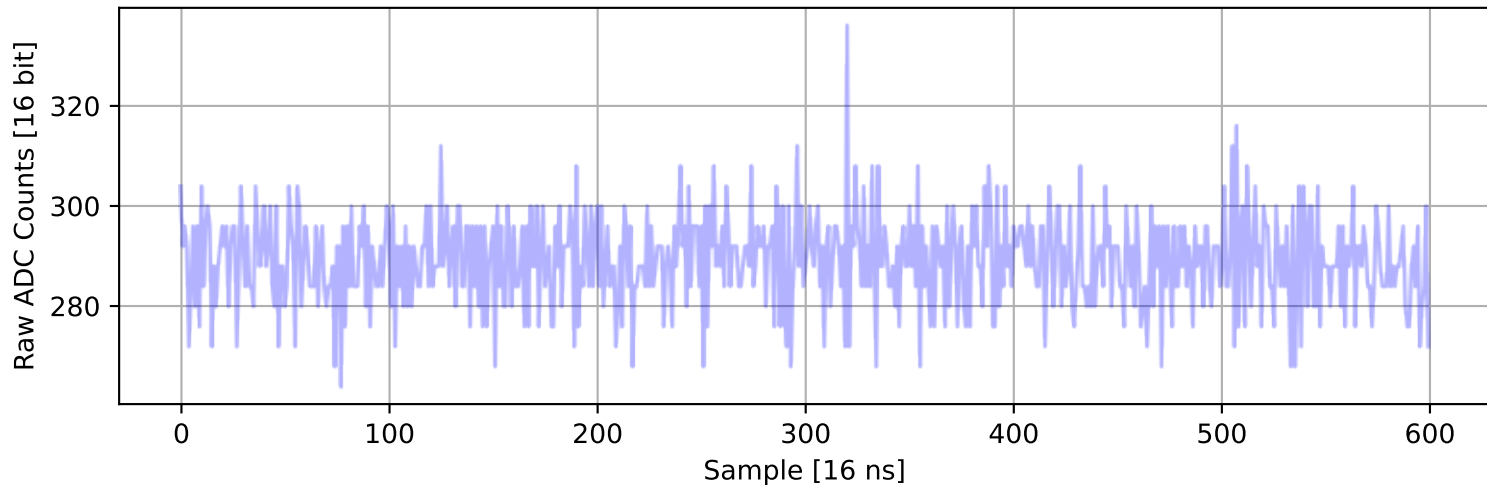
ADC 2, Channel 17, Event 248: Max Signal Waveform



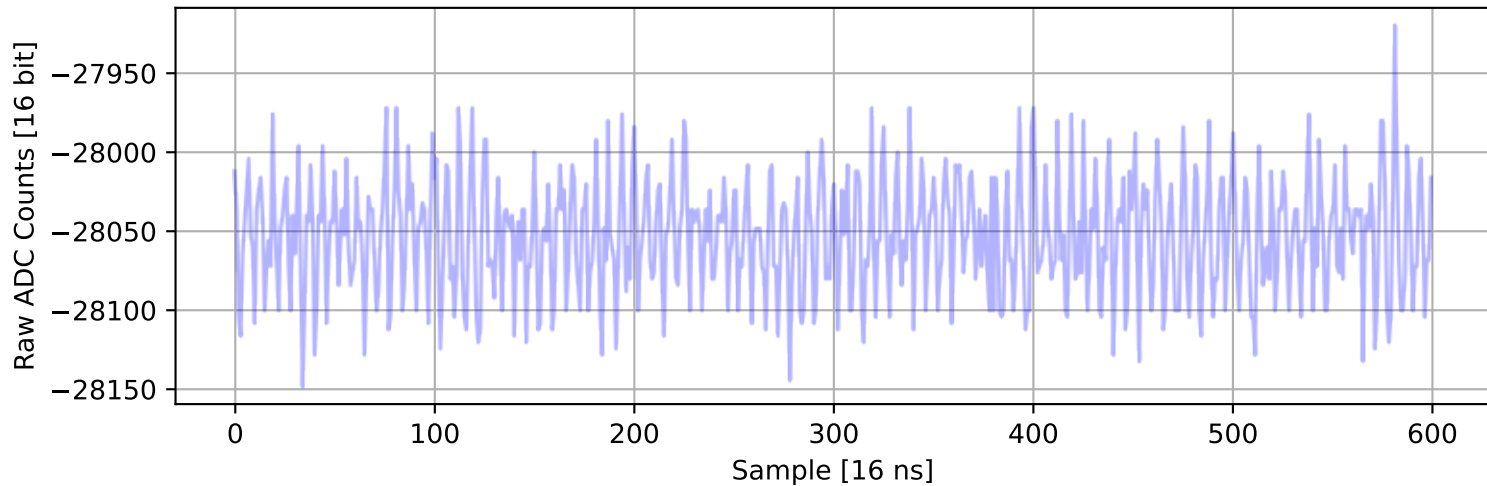
ADC 2, Channel 18, Event 311: Max Signal Waveform



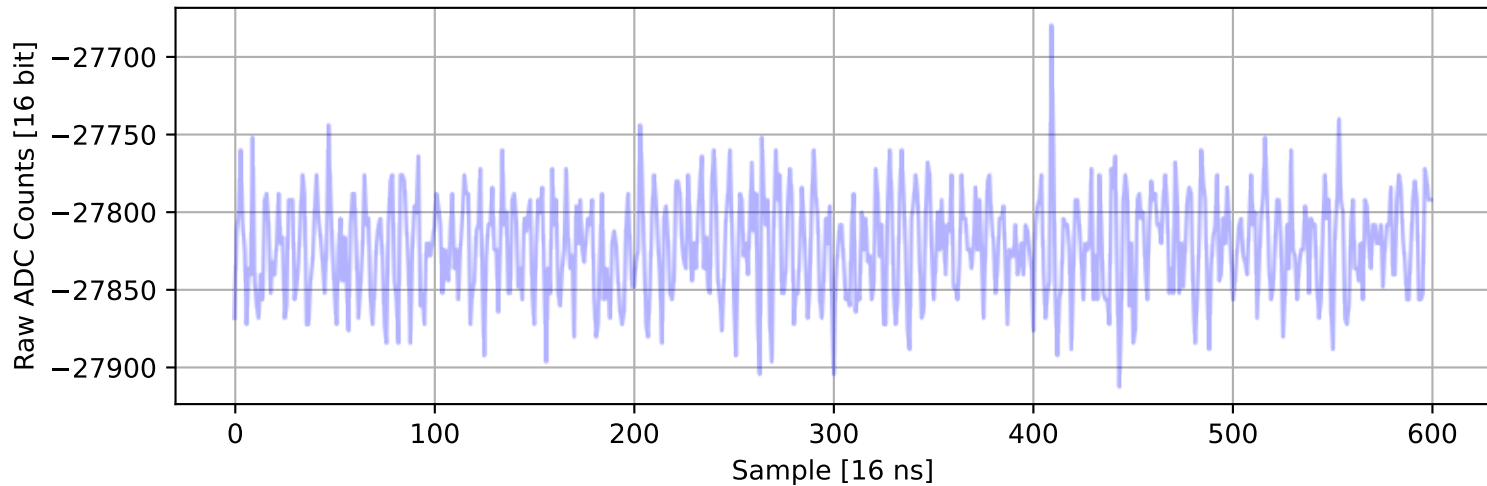
ADC 2, Channel 19, Event 6: Max Signal Waveform



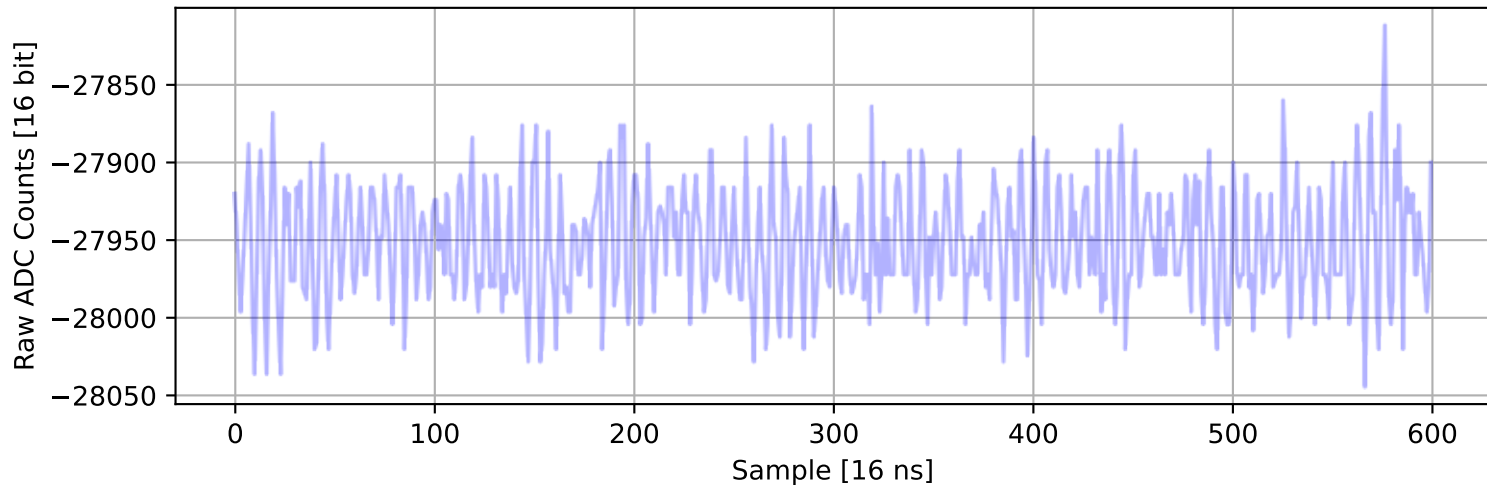
ADC 2, Channel 20, Event 1769: Max Signal Waveform



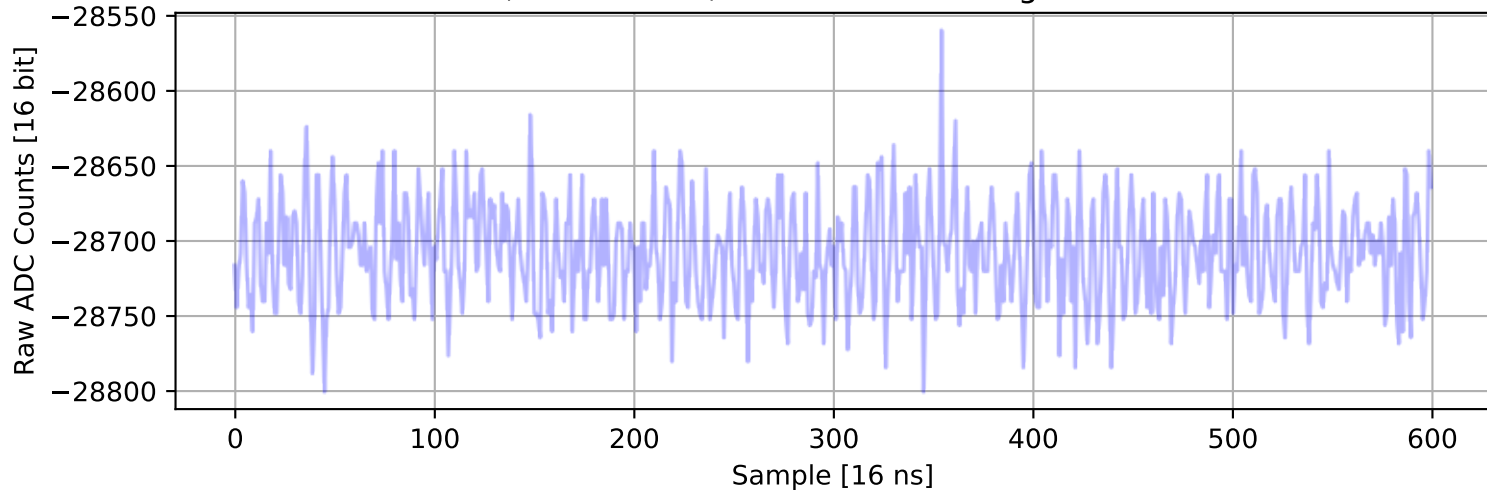
ADC 2, Channel 21, Event 1931: Max Signal Waveform



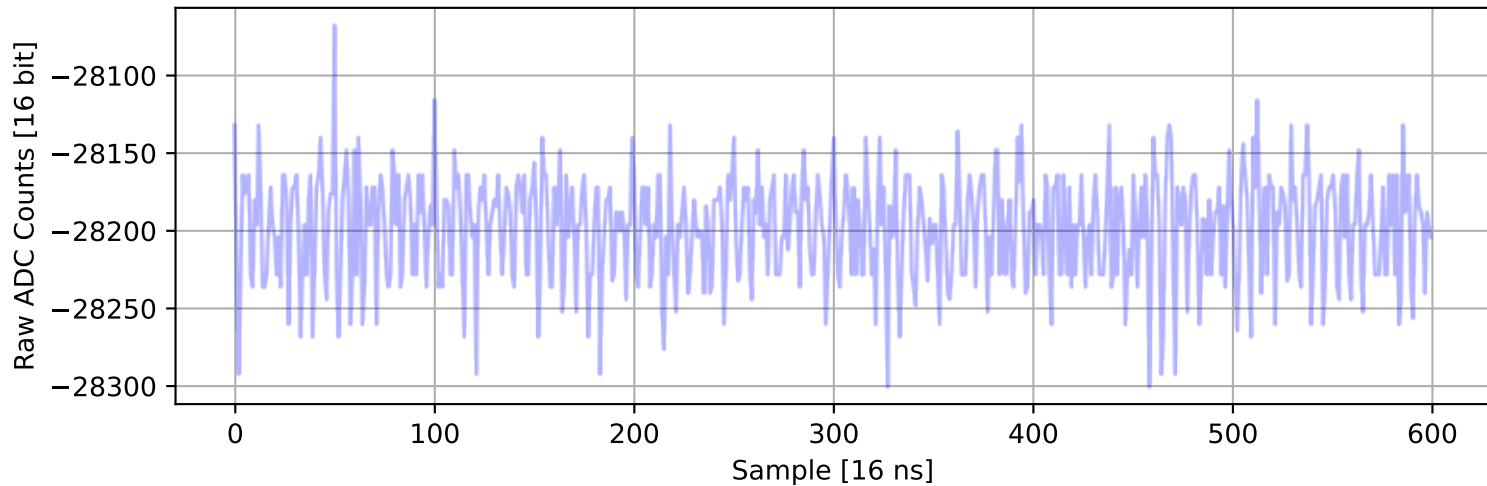
ADC 2, Channel 22, Event 605: Max Signal Waveform



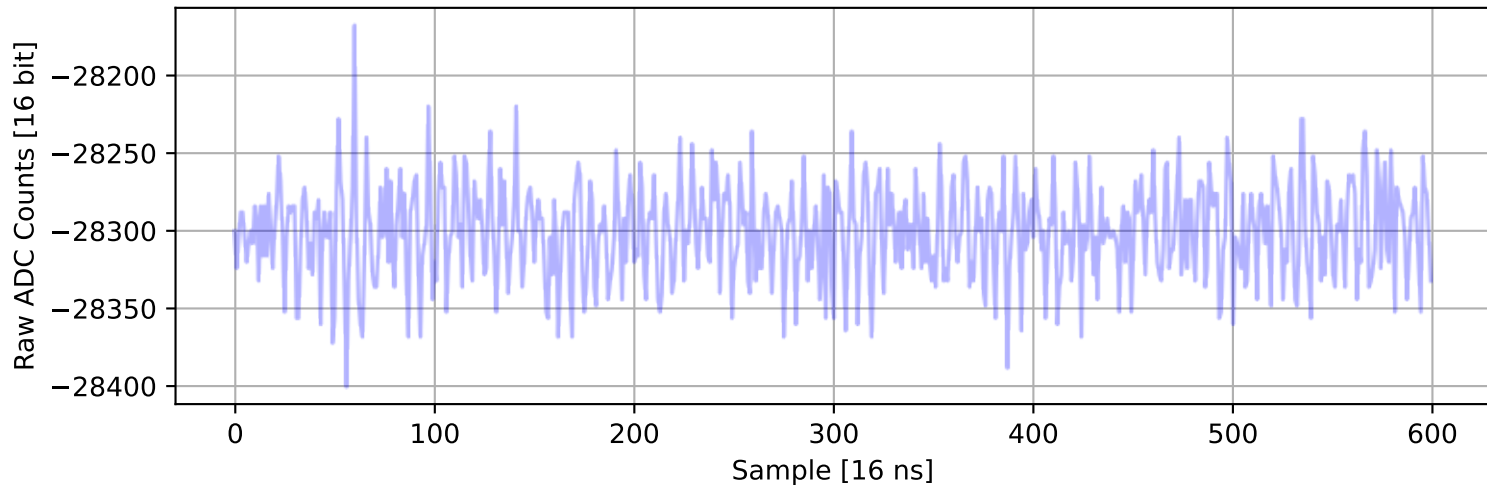
ADC 2, Channel 23, Event 941: Max Signal Waveform



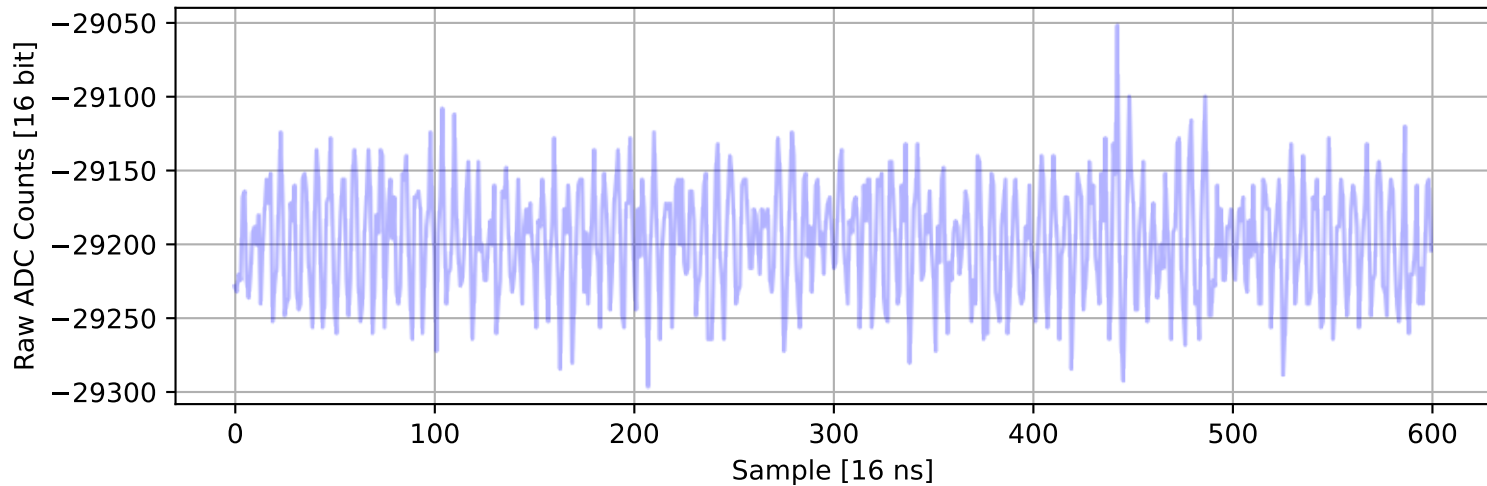
ADC 2, Channel 24, Event 2520: Max Signal Waveform



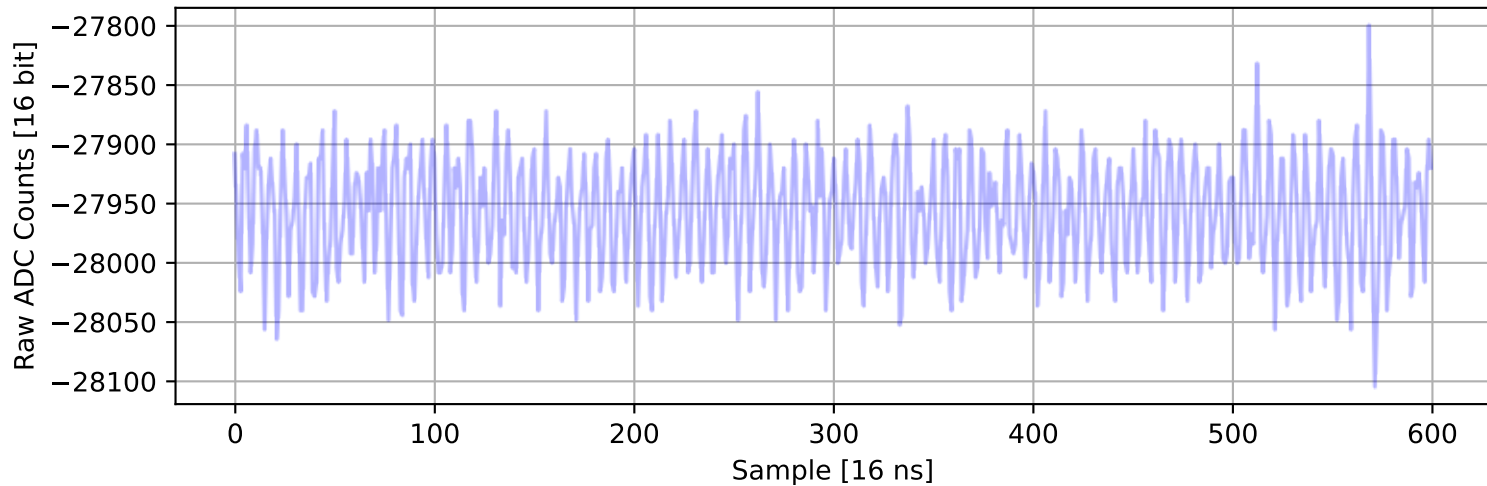
ADC 2, Channel 25, Event 1087: Max Signal Waveform



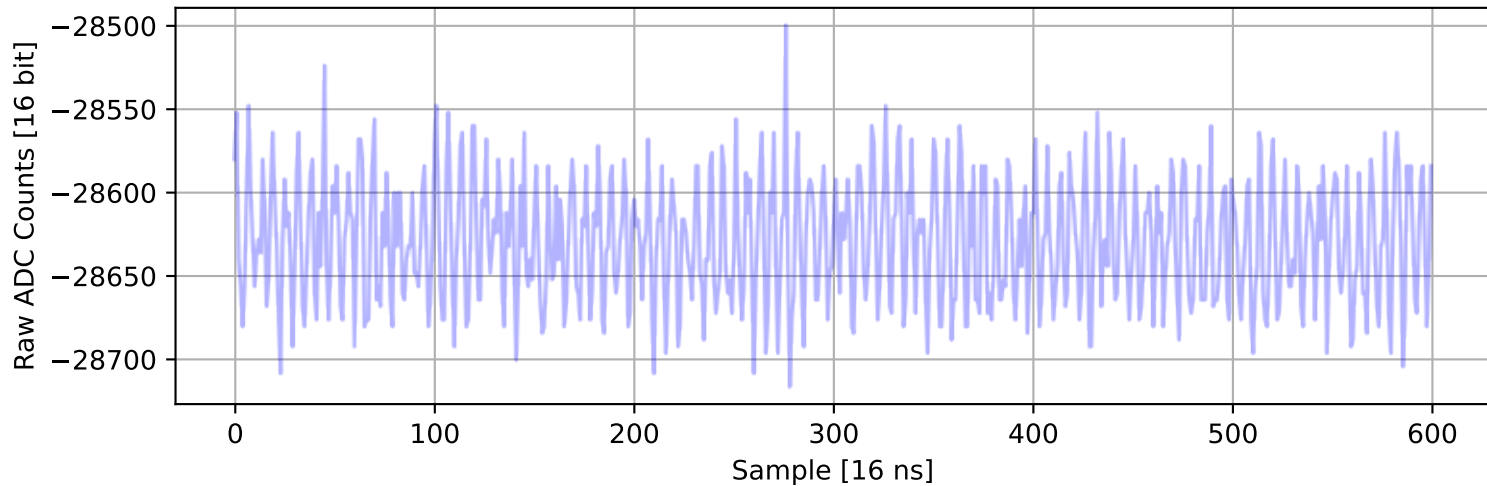
ADC 2, Channel 26, Event 2837: Max Signal Waveform



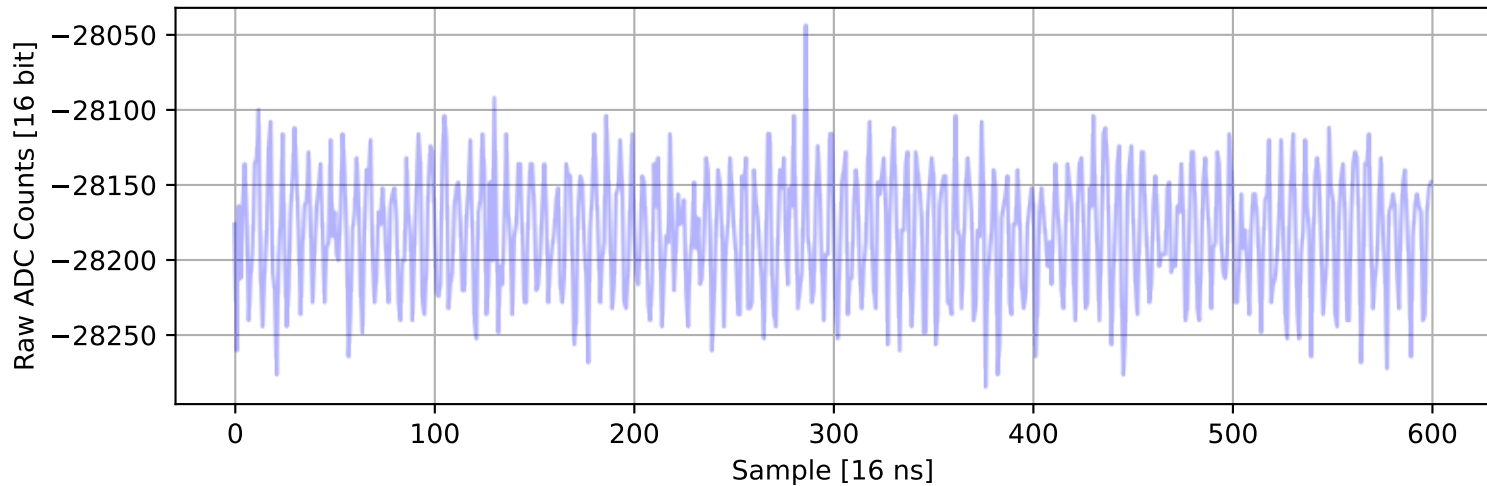
ADC 2, Channel 27, Event 456: Max Signal Waveform



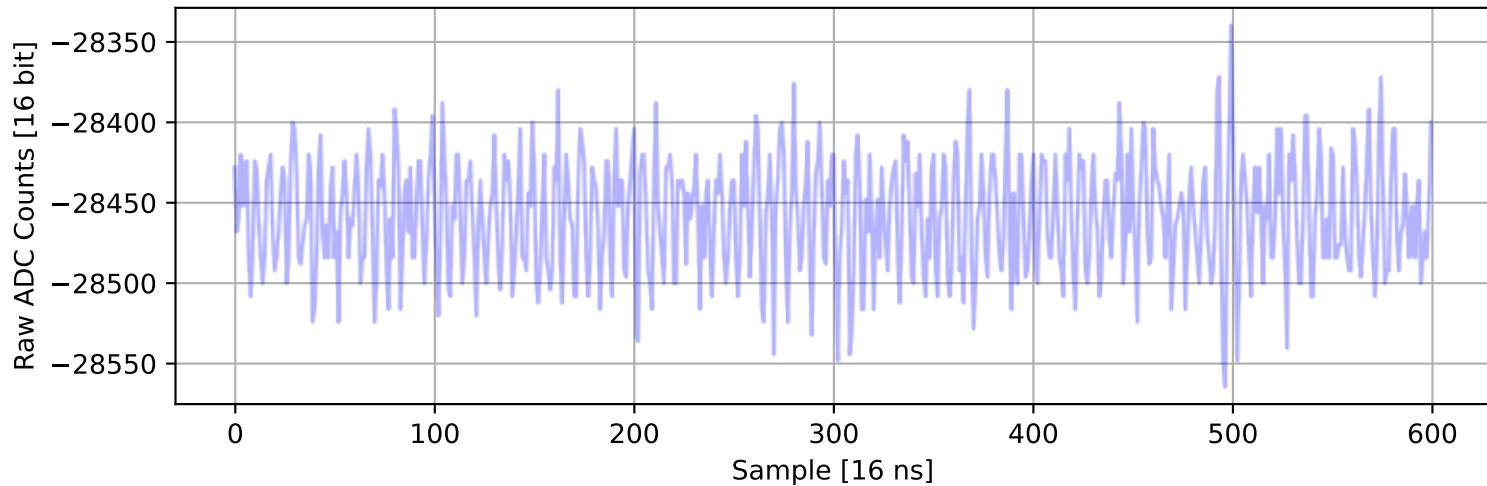
ADC 2, Channel 28, Event 1112: Max Signal Waveform



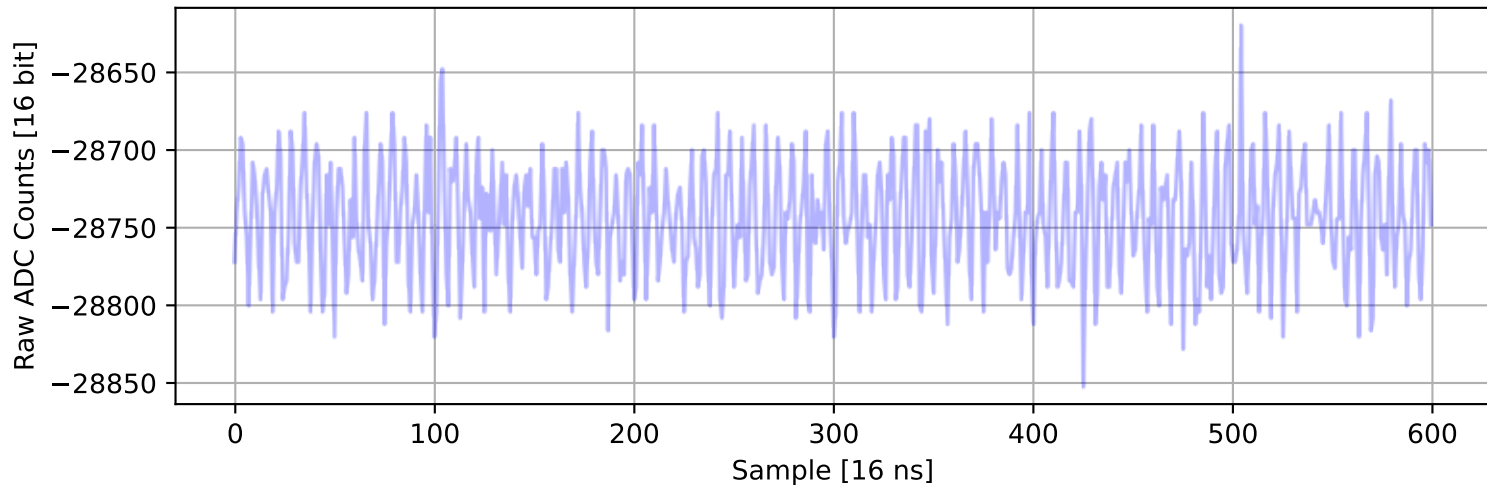
ADC 2, Channel 29, Event 2304: Max Signal Waveform



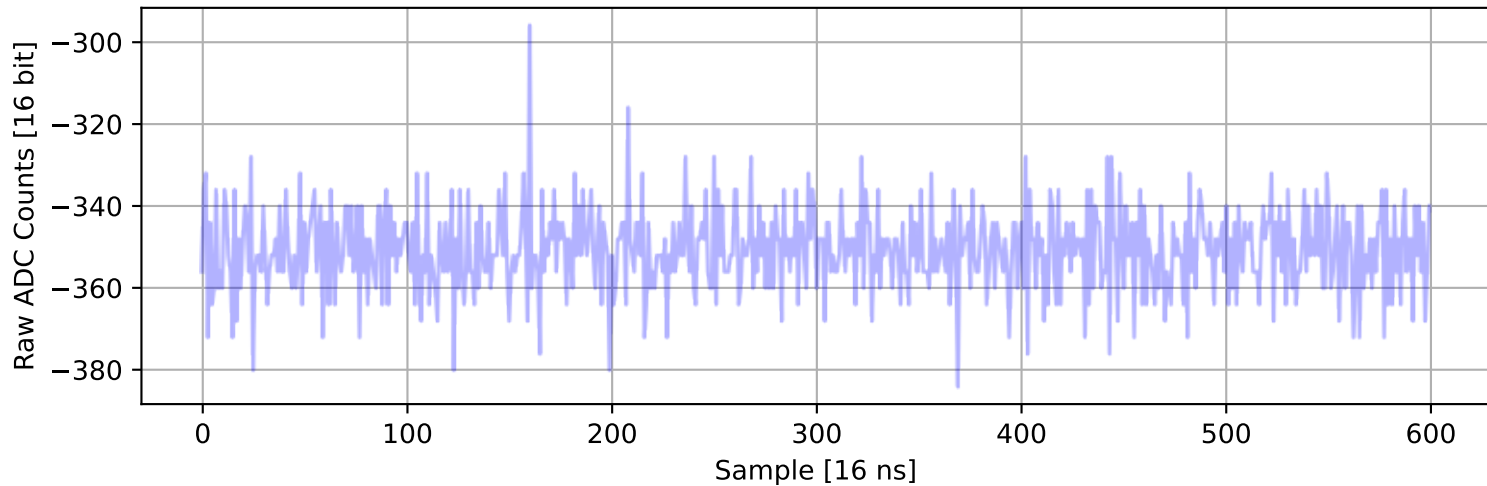
ADC 2, Channel 30, Event 1472: Max Signal Waveform



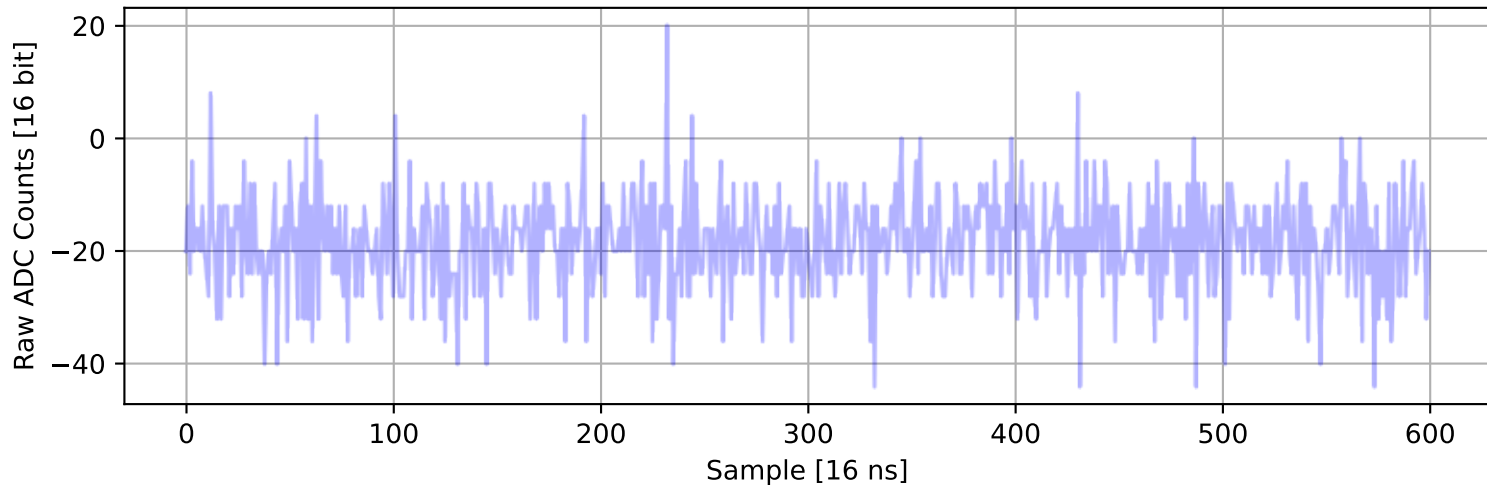
ADC 2, Channel 31, Event 418: Max Signal Waveform



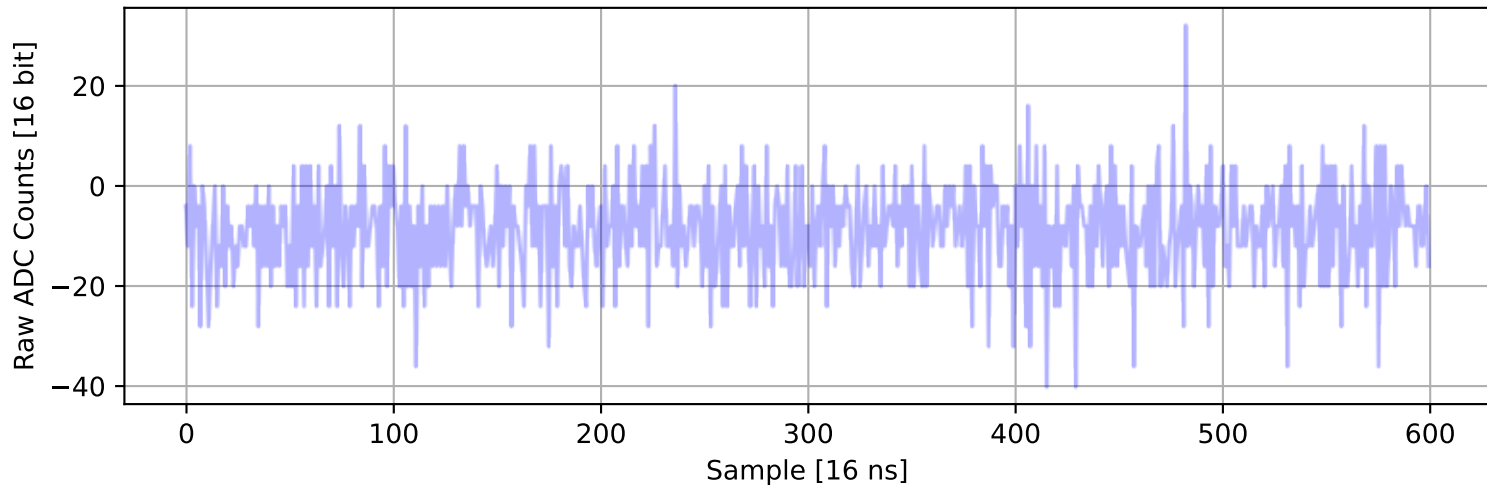
ADC 2, Channel 32, Event 1795: Max Signal Waveform



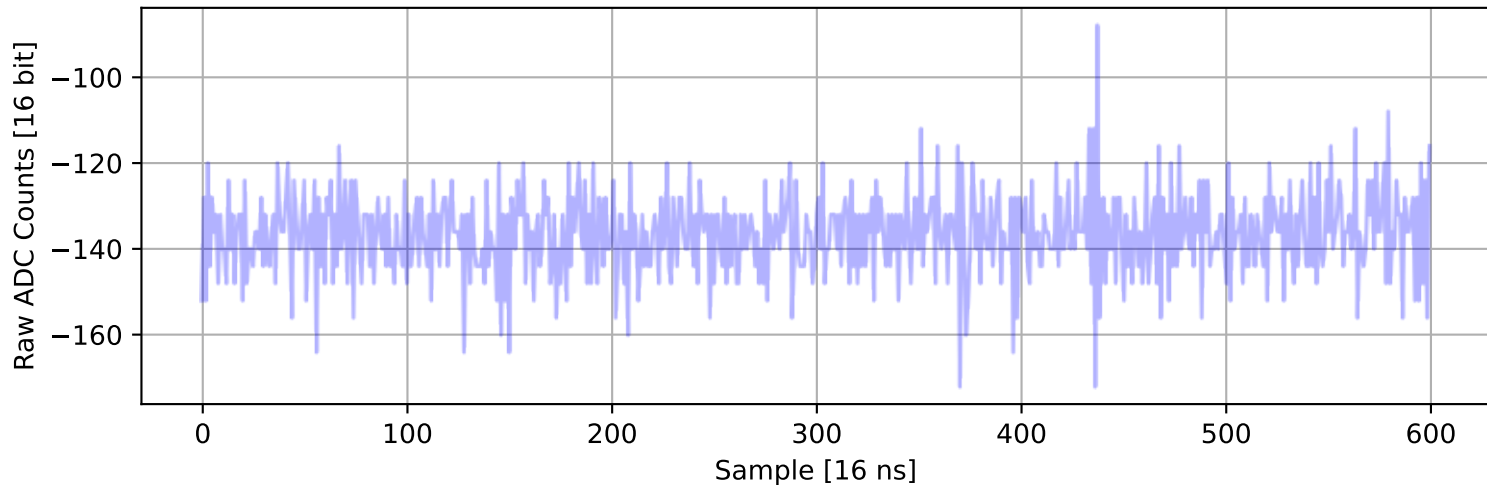
ADC 2, Channel 33, Event 1371: Max Signal Waveform



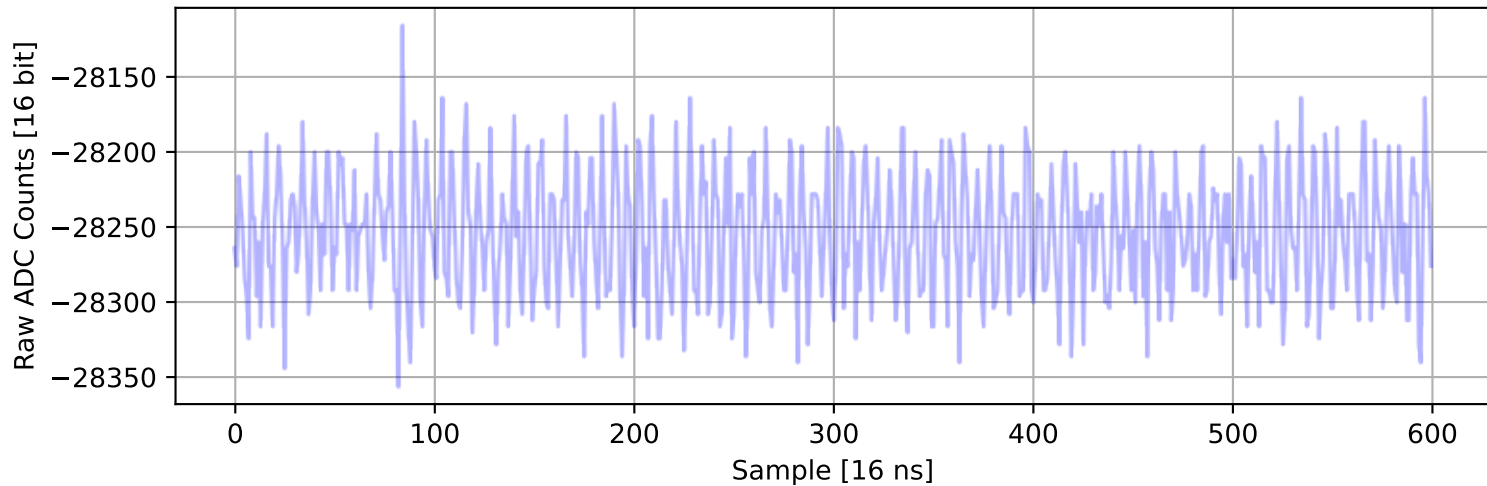
ADC 2, Channel 34, Event 223: Max Signal Waveform



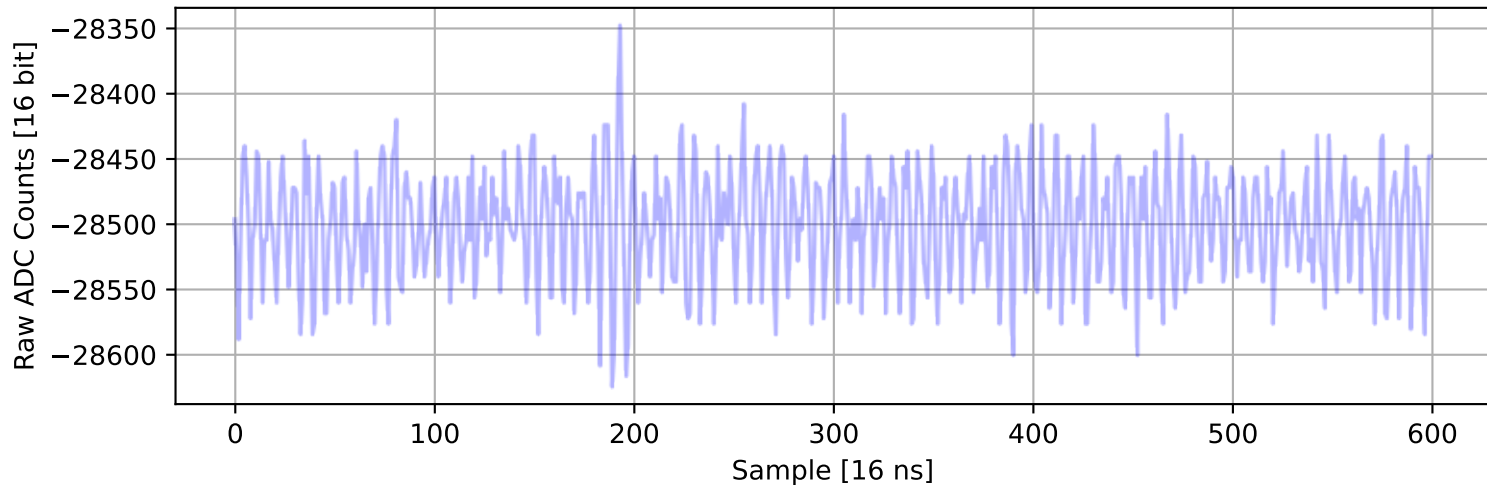
ADC 2, Channel 35, Event 564: Max Signal Waveform



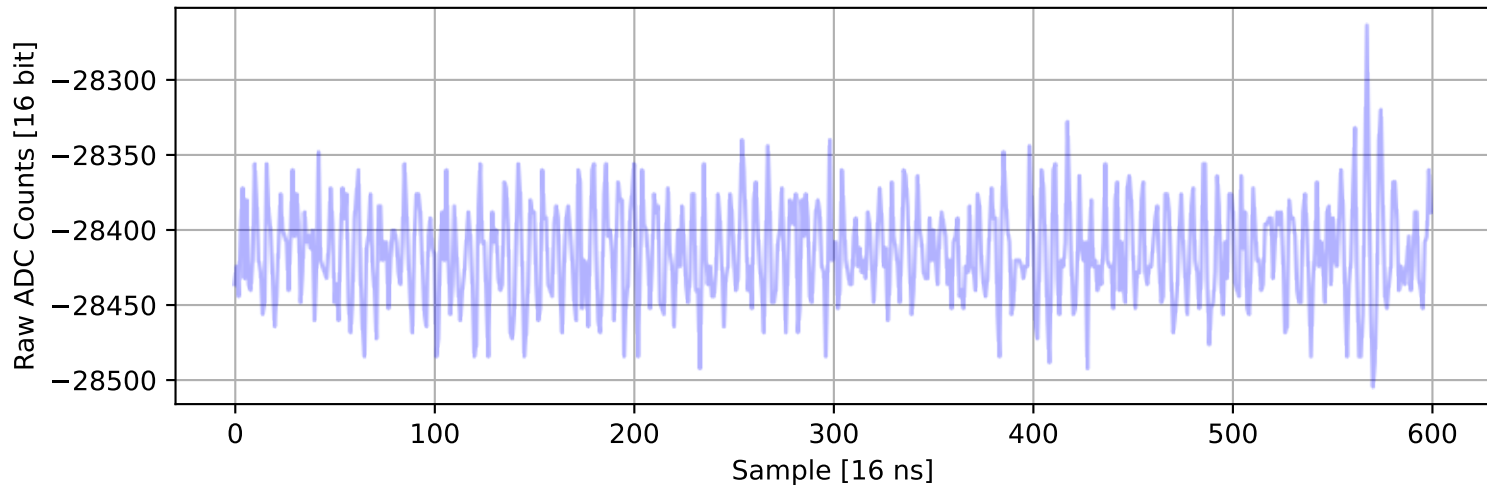
ADC 2, Channel 36, Event 2038: Max Signal Waveform



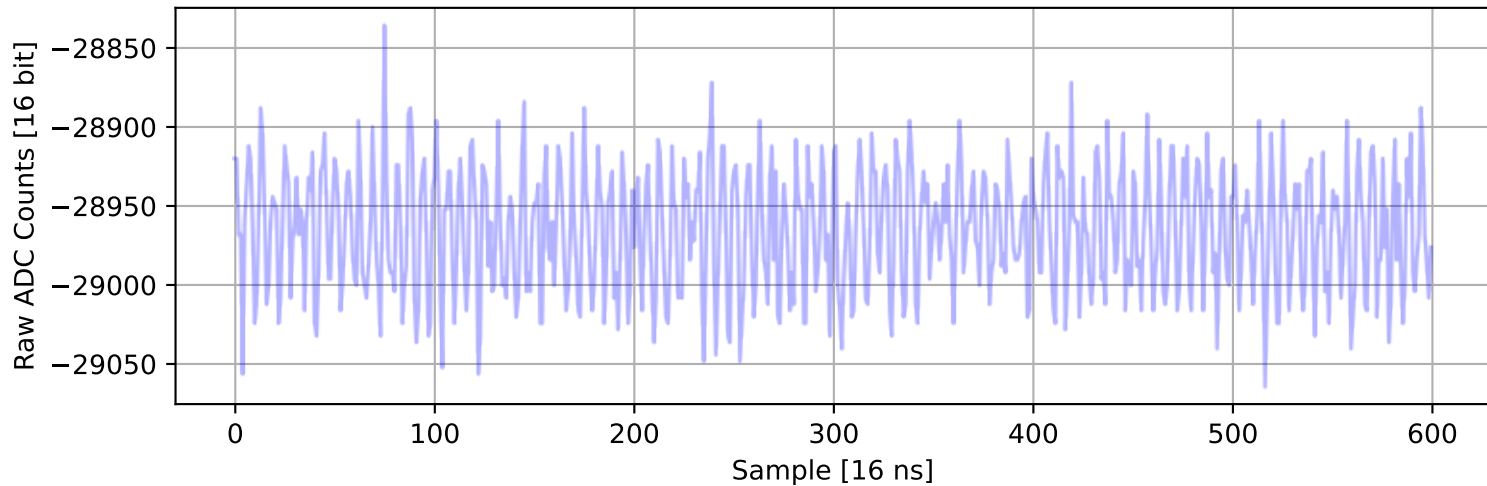
ADC 2, Channel 37, Event 321: Max Signal Waveform



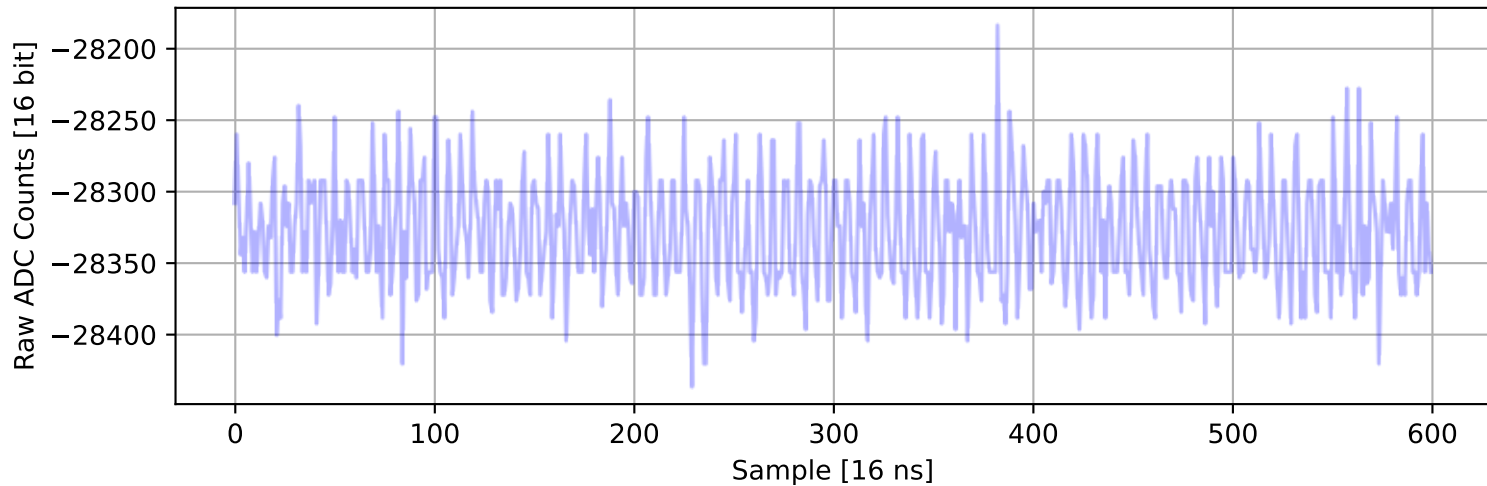
ADC 2, Channel 38, Event 2061: Max Signal Waveform



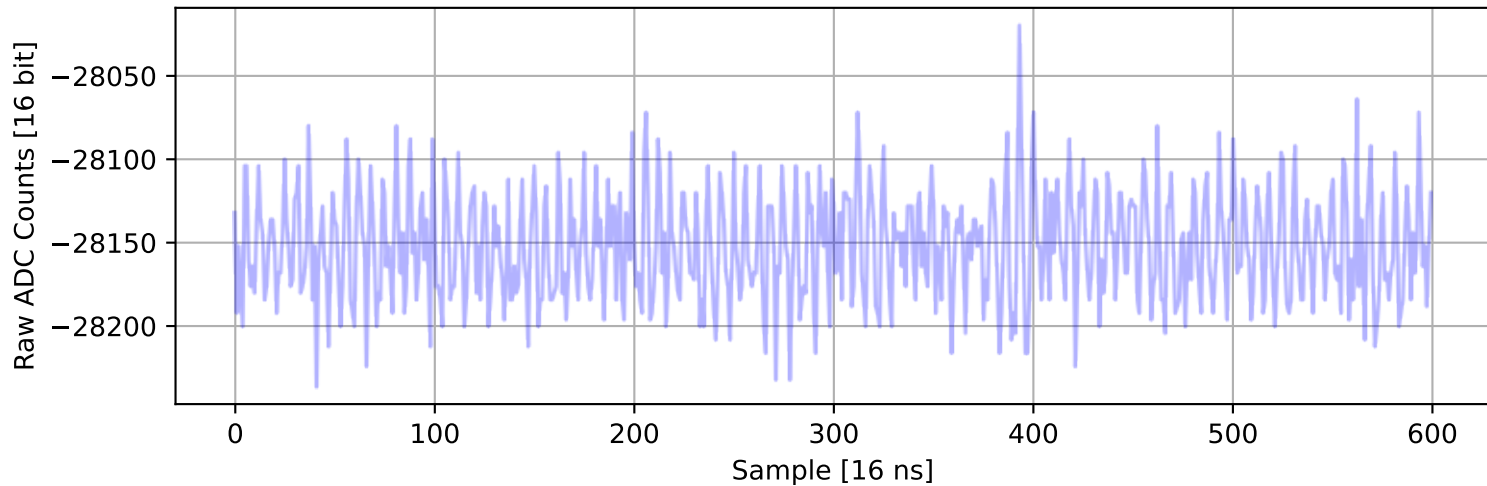
ADC 2, Channel 39, Event 526: Max Signal Waveform



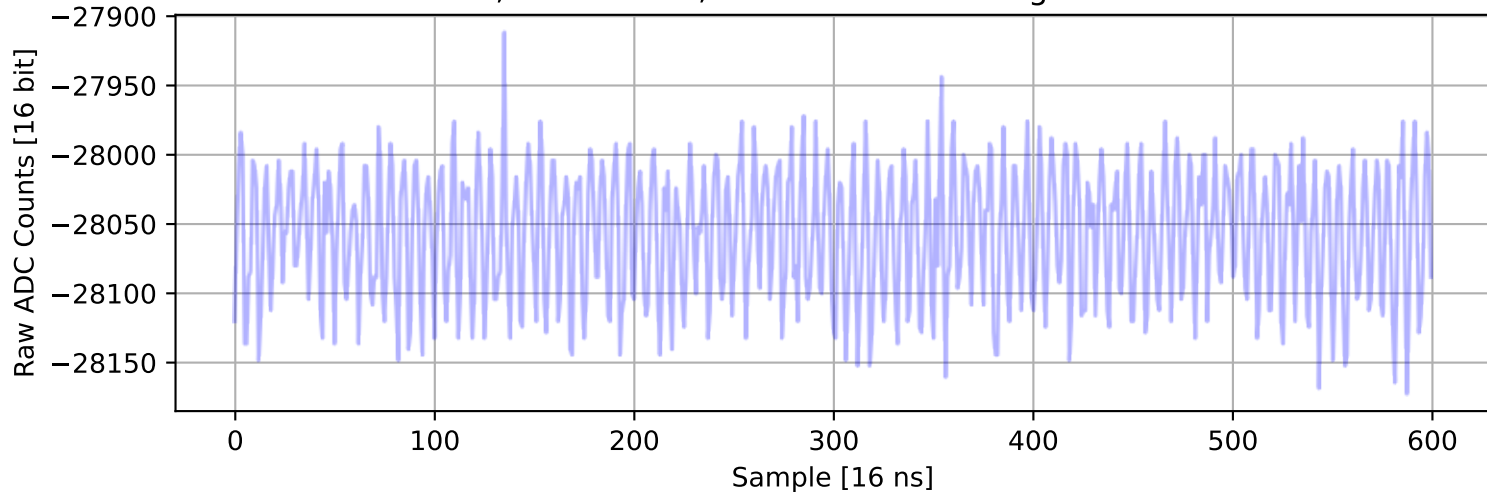
ADC 2, Channel 40, Event 2151: Max Signal Waveform



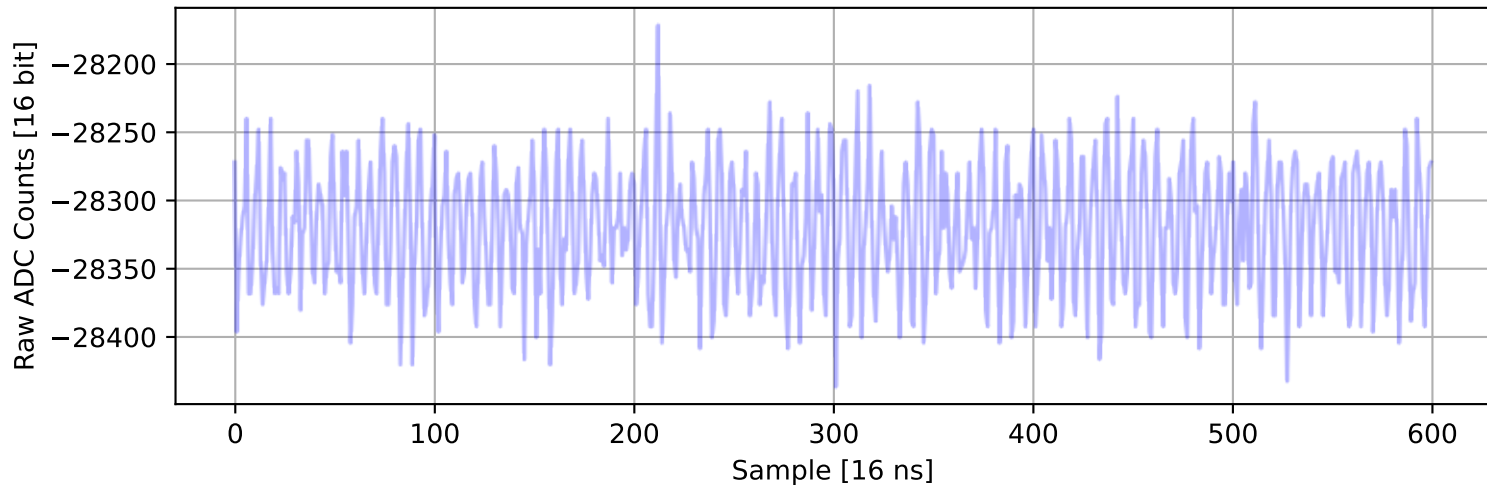
ADC 2, Channel 41, Event 177: Max Signal Waveform



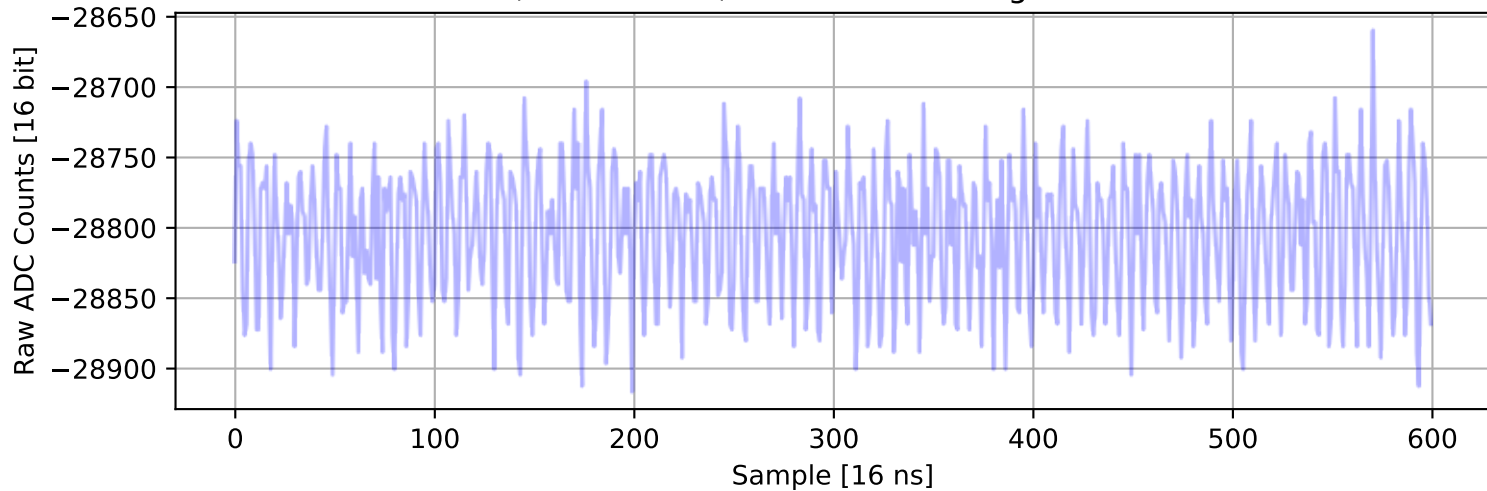
ADC 2, Channel 42, Event 2701: Max Signal Waveform



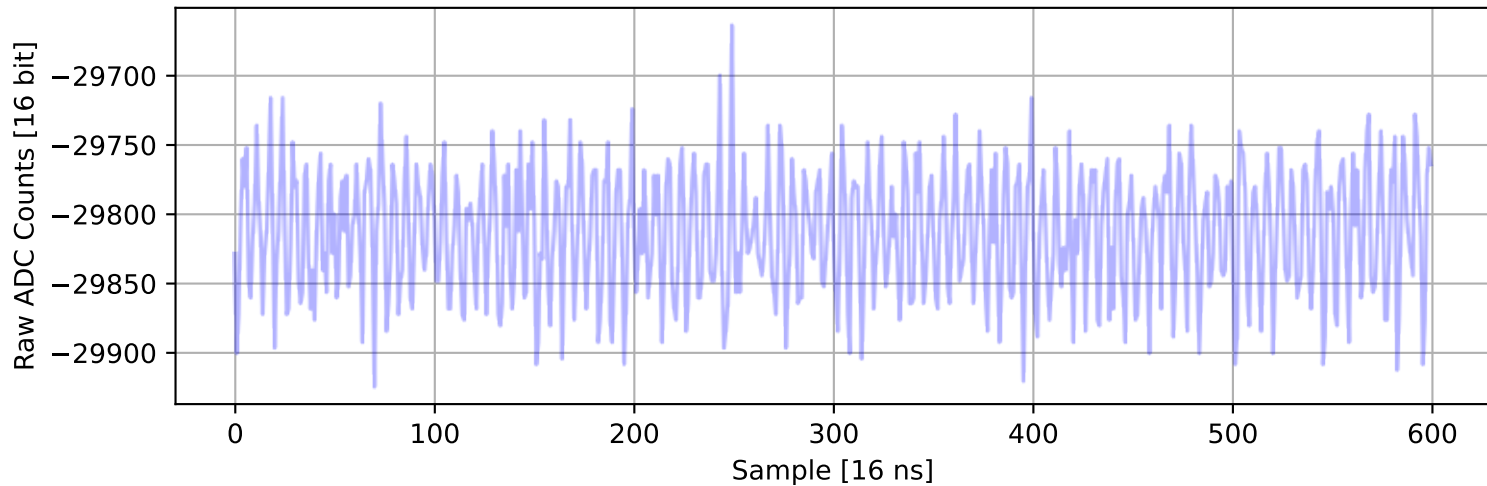
ADC 2, Channel 43, Event 1106: Max Signal Waveform



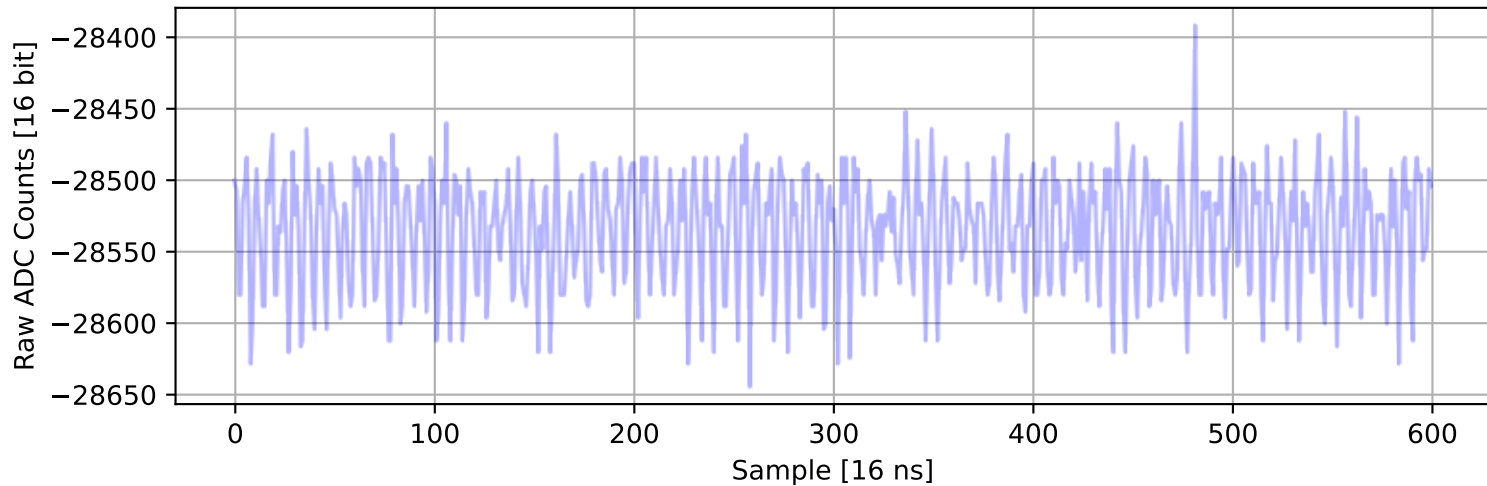
ADC 2, Channel 44, Event 54: Max Signal Waveform



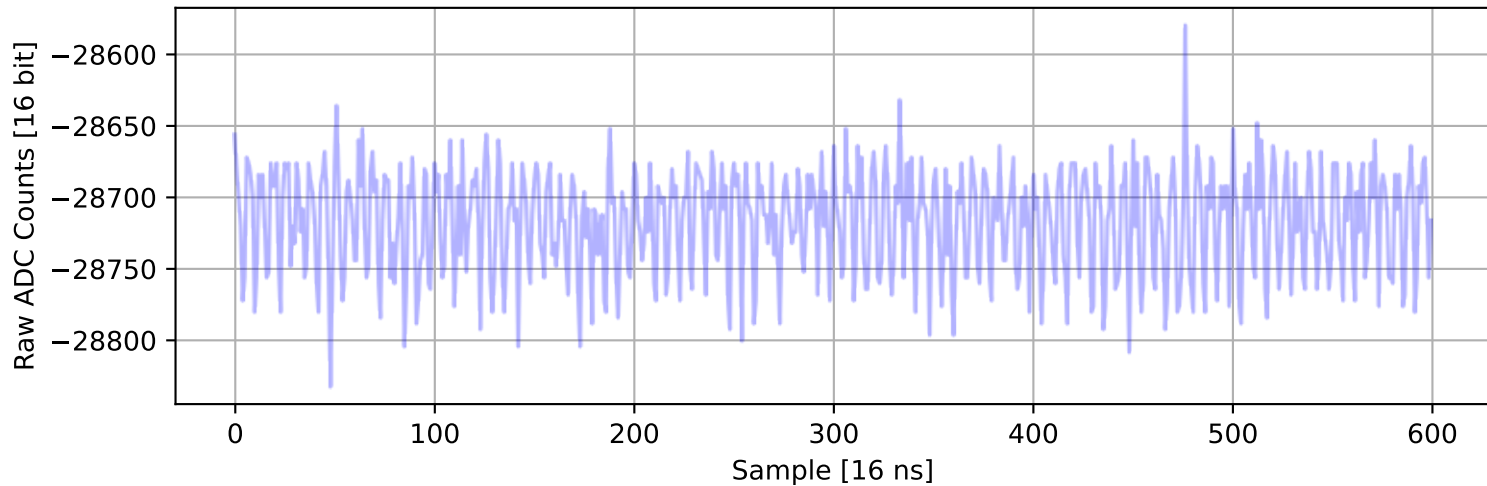
ADC 2, Channel 45, Event 247: Max Signal Waveform



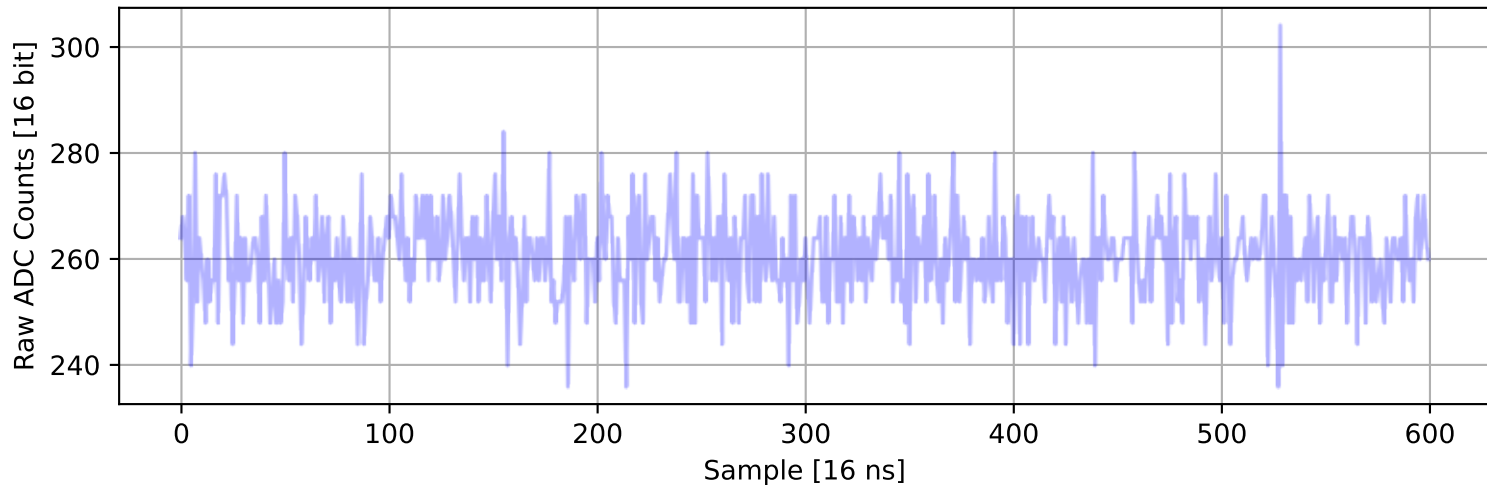
ADC 2, Channel 46, Event 2344: Max Signal Waveform



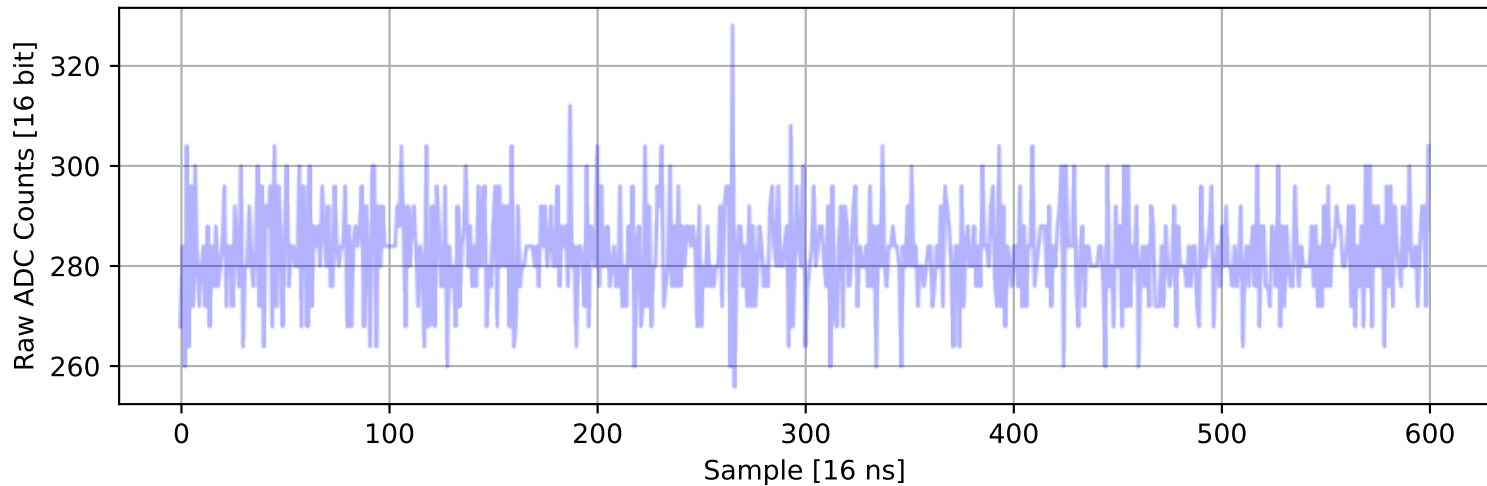
ADC 2, Channel 47, Event 1498: Max Signal Waveform



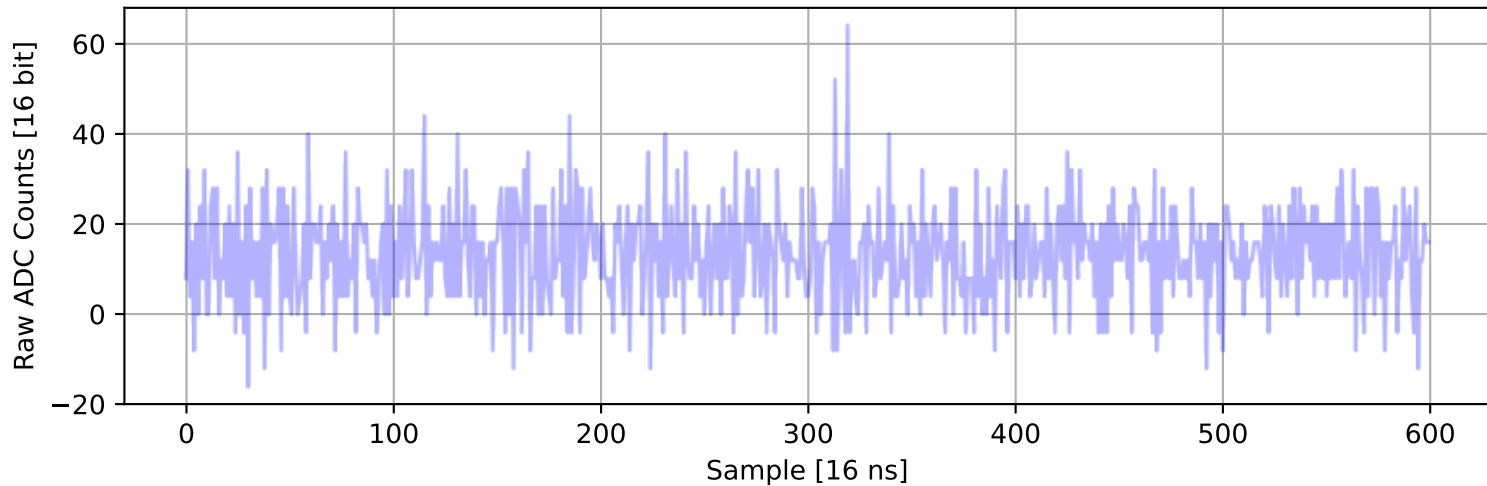
ADC 2, Channel 48, Event 656: Max Signal Waveform



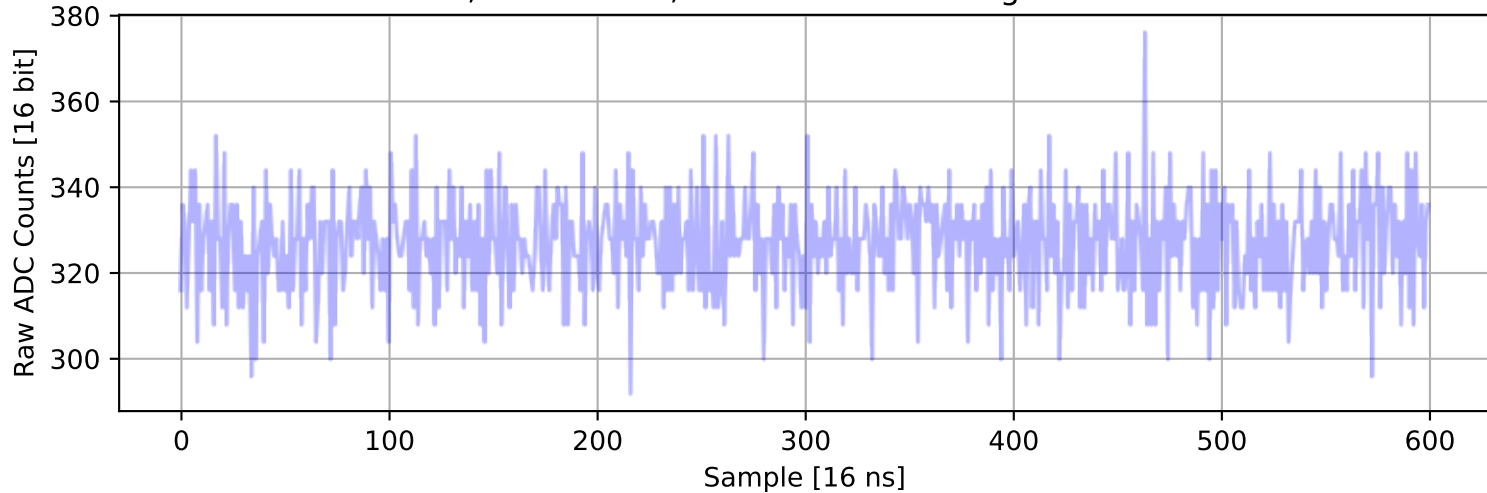
ADC 2, Channel 49, Event 234: Max Signal Waveform



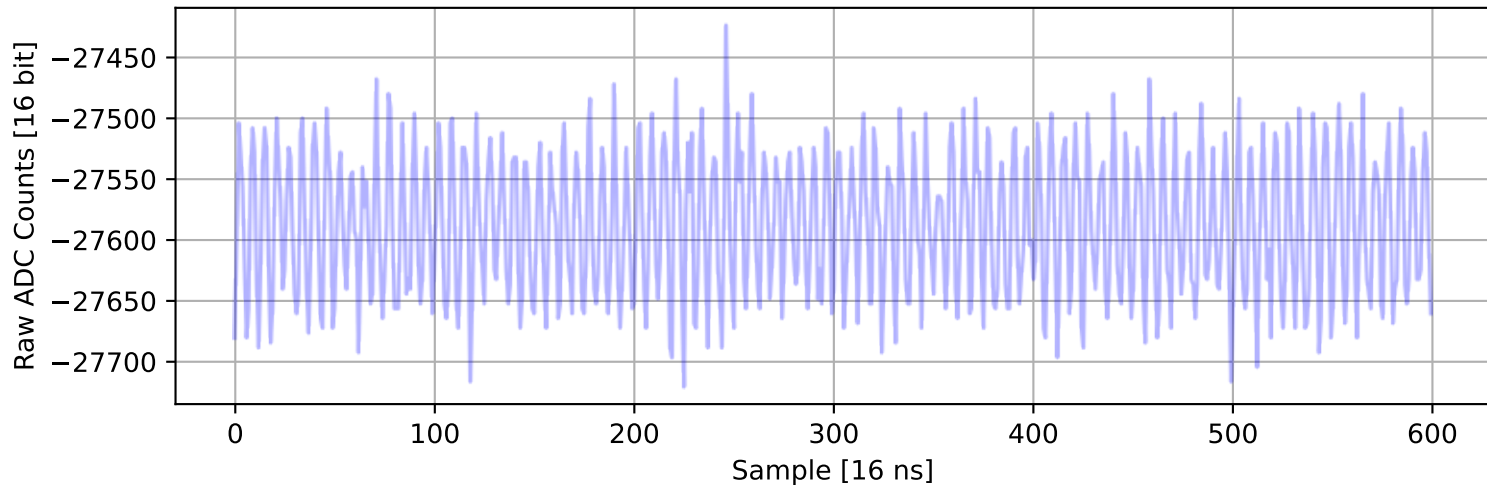
ADC 2, Channel 50, Event 1585: Max Signal Waveform



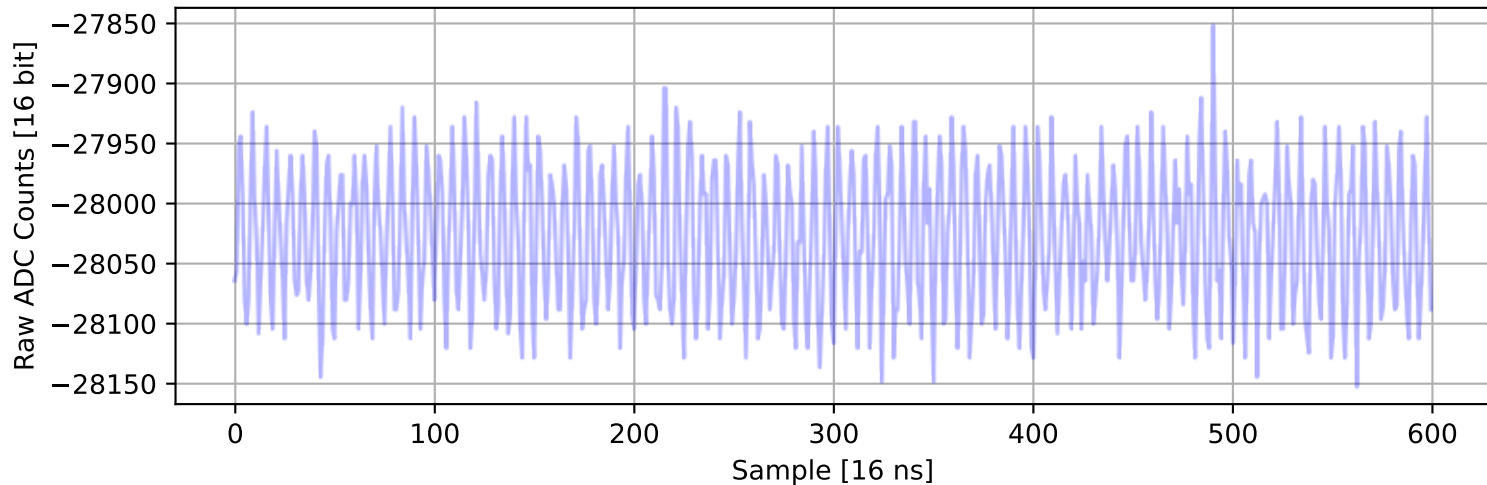
ADC 2, Channel 51, Event 2353: Max Signal Waveform



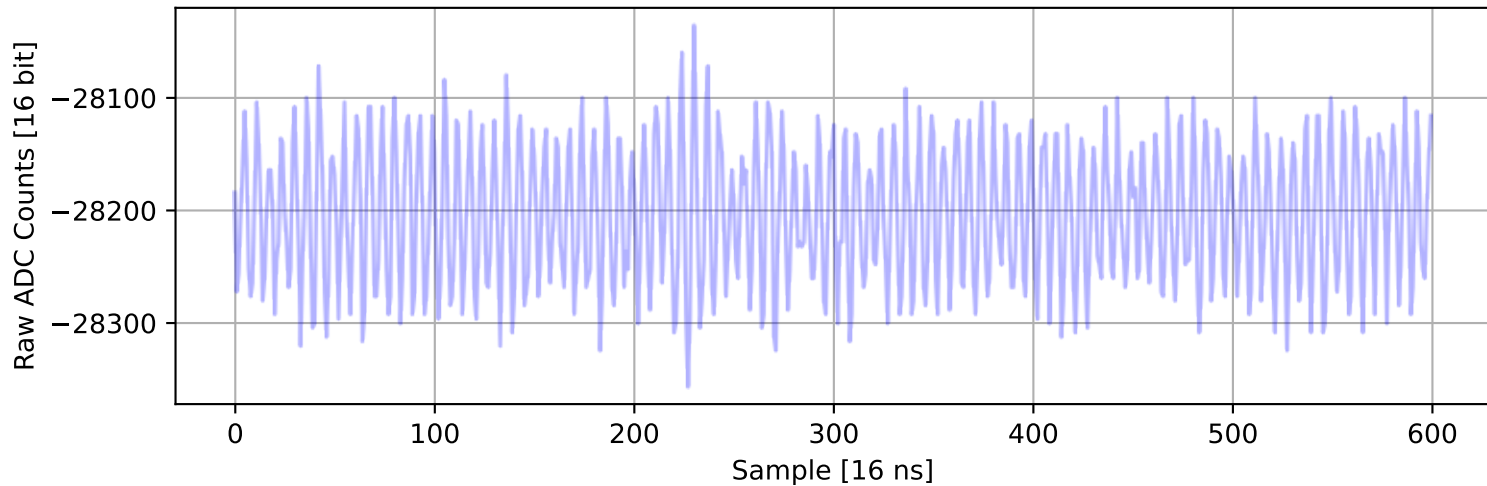
ADC 2, Channel 52, Event 1016: Max Signal Waveform



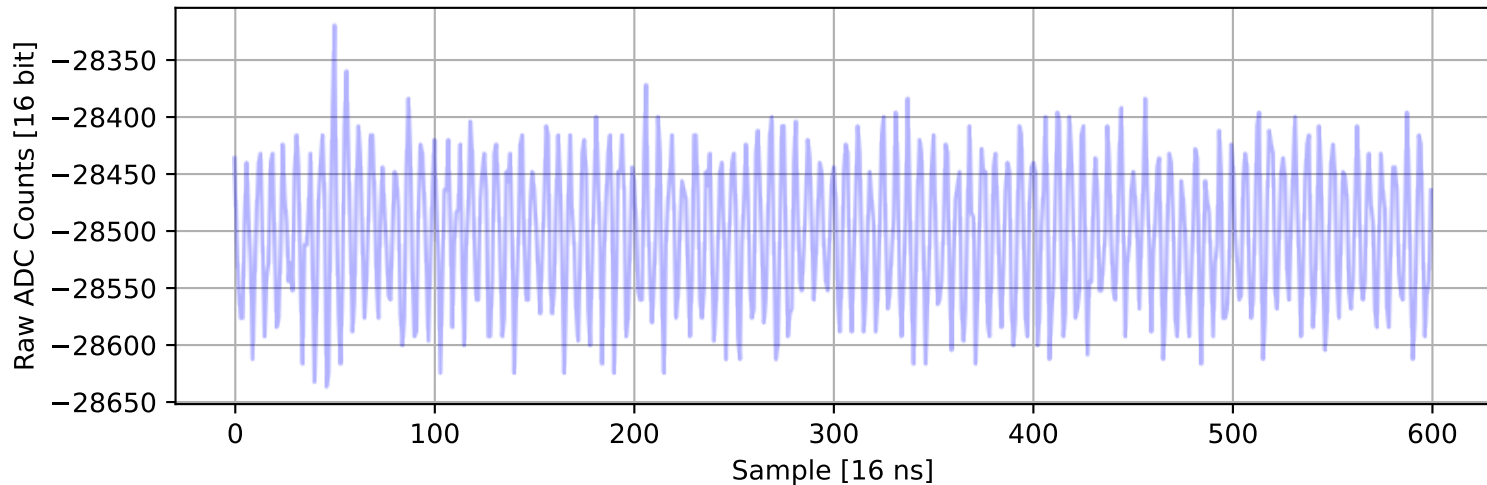
ADC 2, Channel 53, Event 1082: Max Signal Waveform



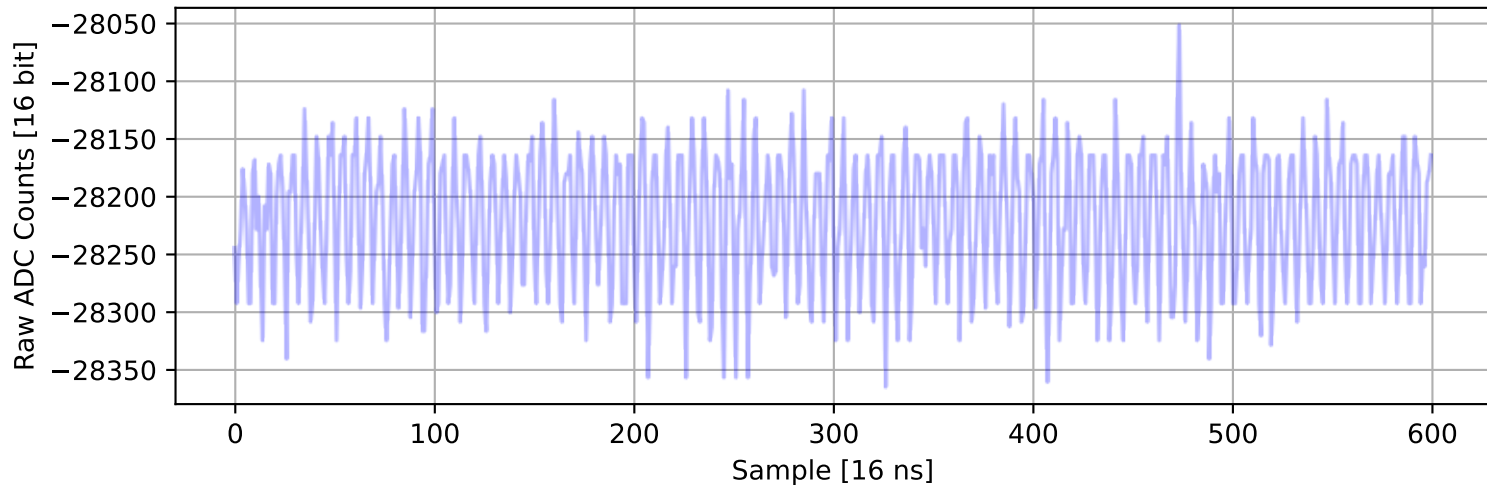
ADC 2, Channel 54, Event 232: Max Signal Waveform



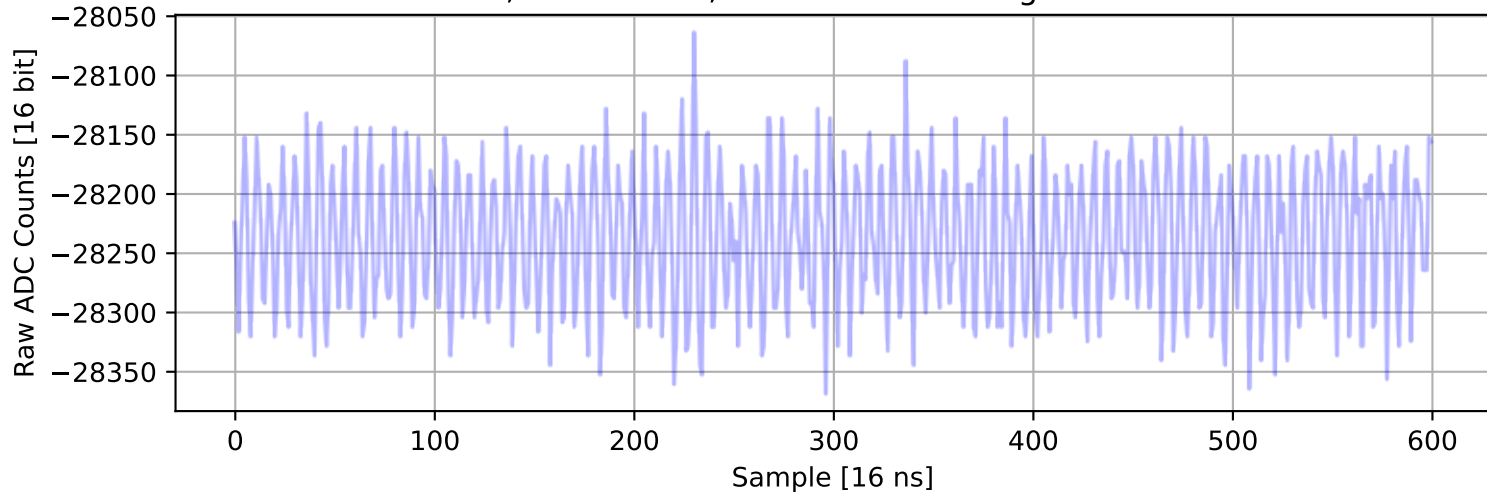
ADC 2, Channel 55, Event 1642: Max Signal Waveform



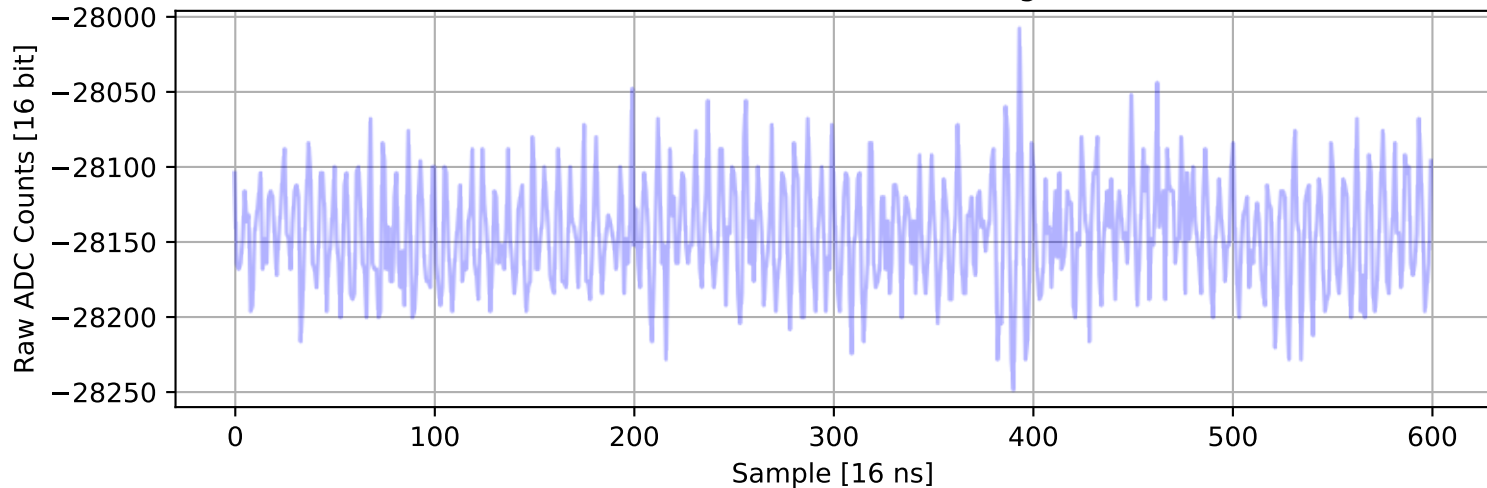
ADC 2, Channel 56, Event 1238: Max Signal Waveform



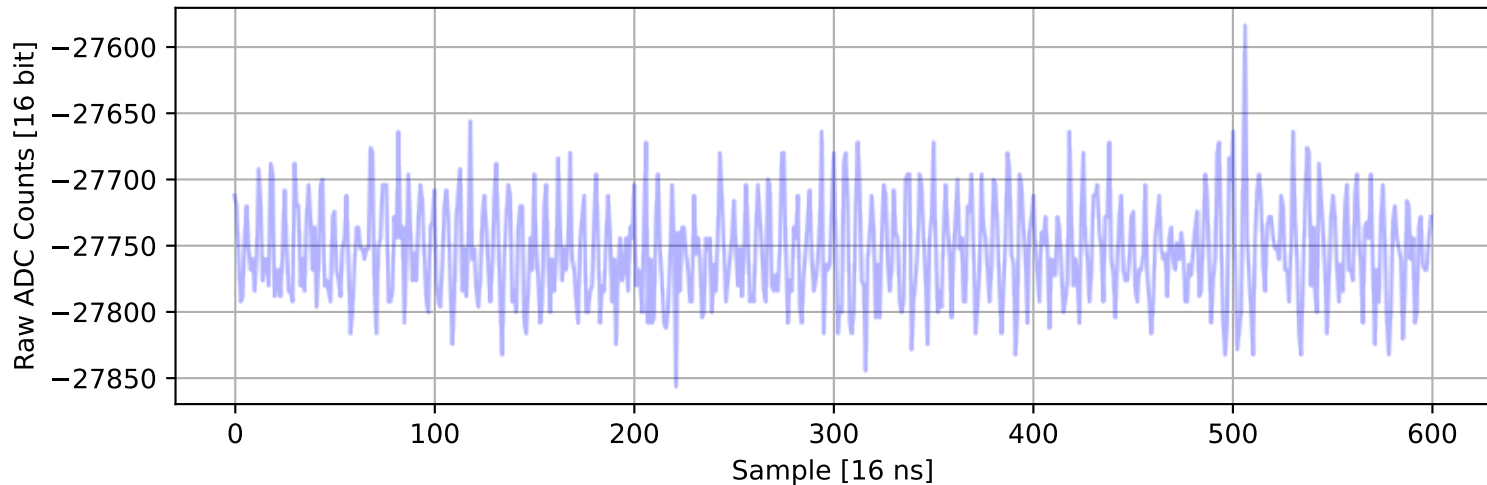
ADC 2, Channel 57, Event 232: Max Signal Waveform



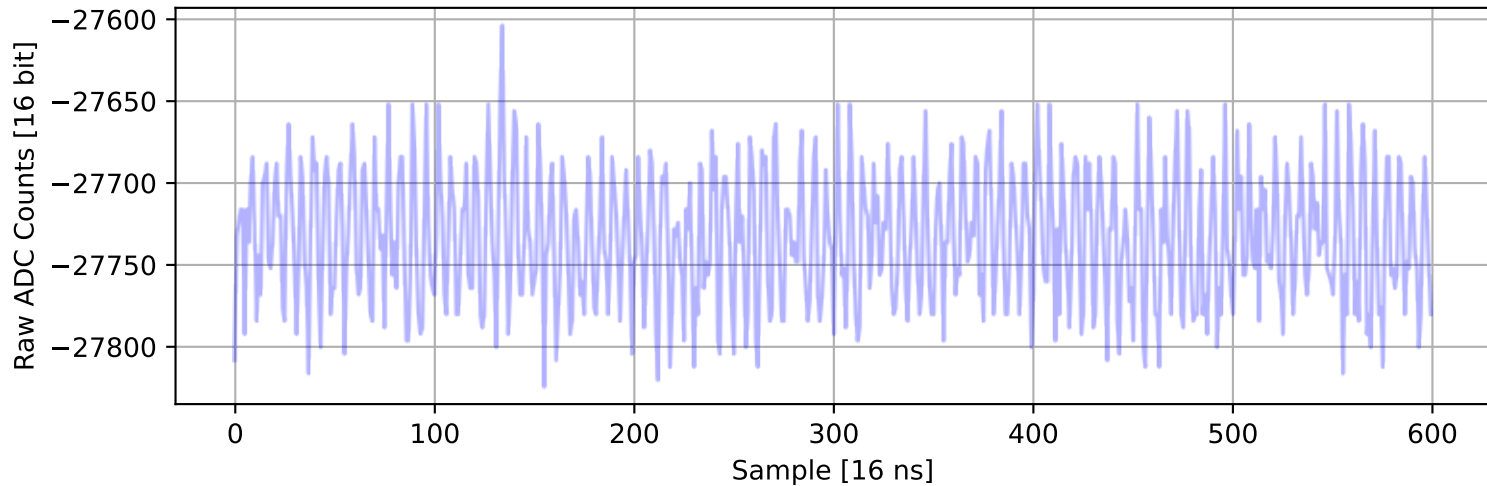
ADC 2, Channel 58, Event 177: Max Signal Waveform



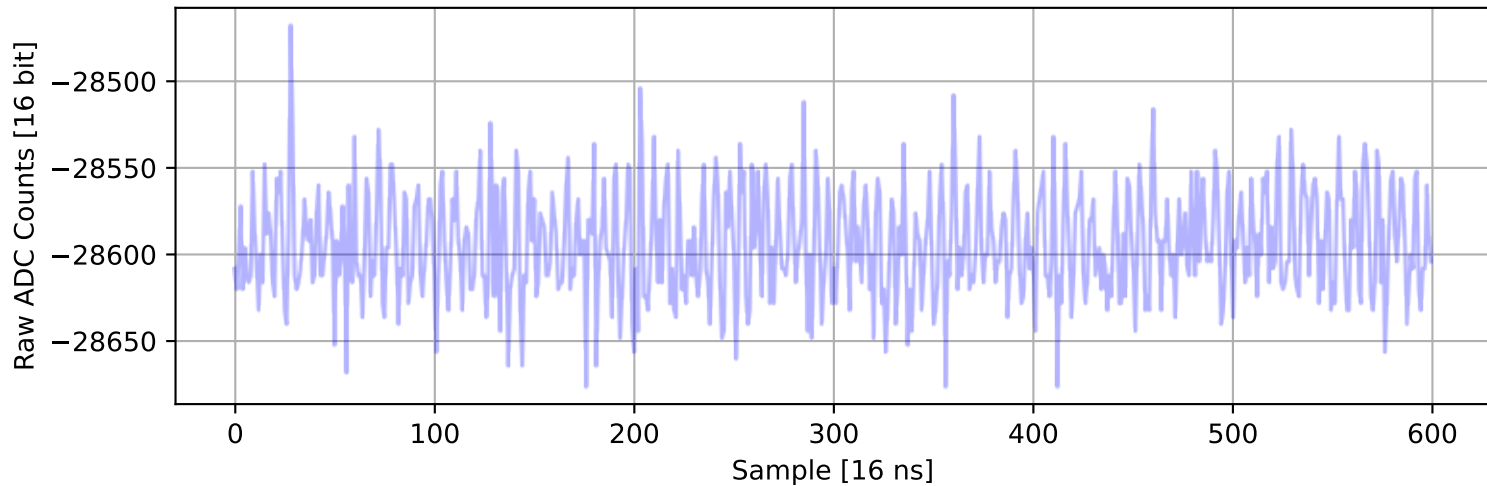
ADC 2, Channel 59, Event 1472: Max Signal Waveform



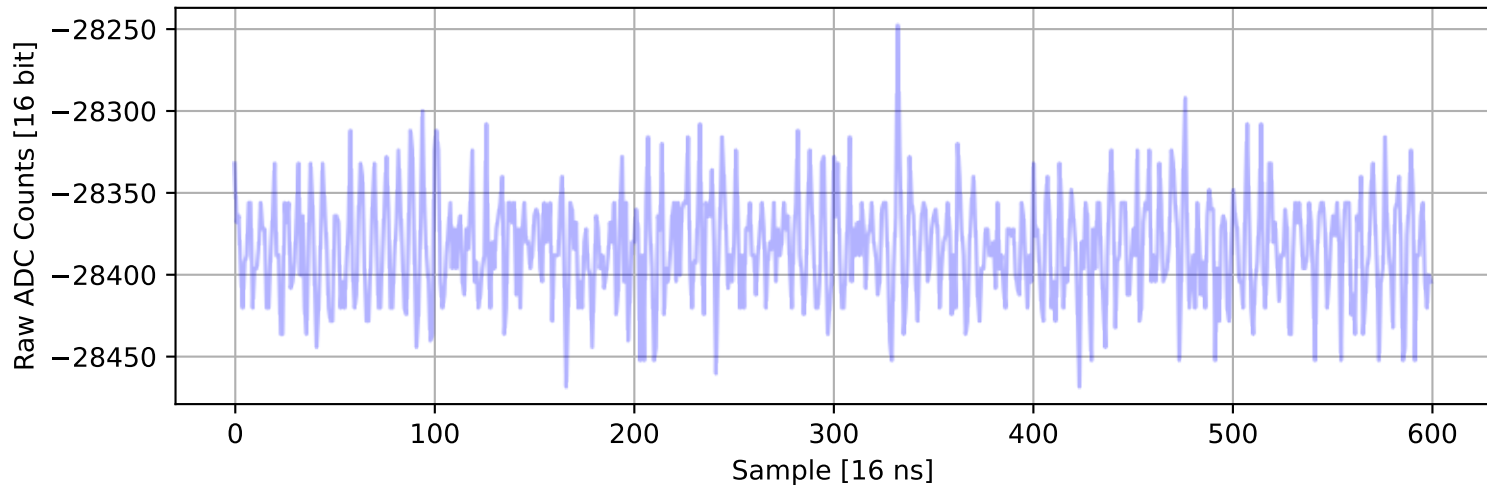
ADC 2, Channel 60, Event 483: Max Signal Waveform



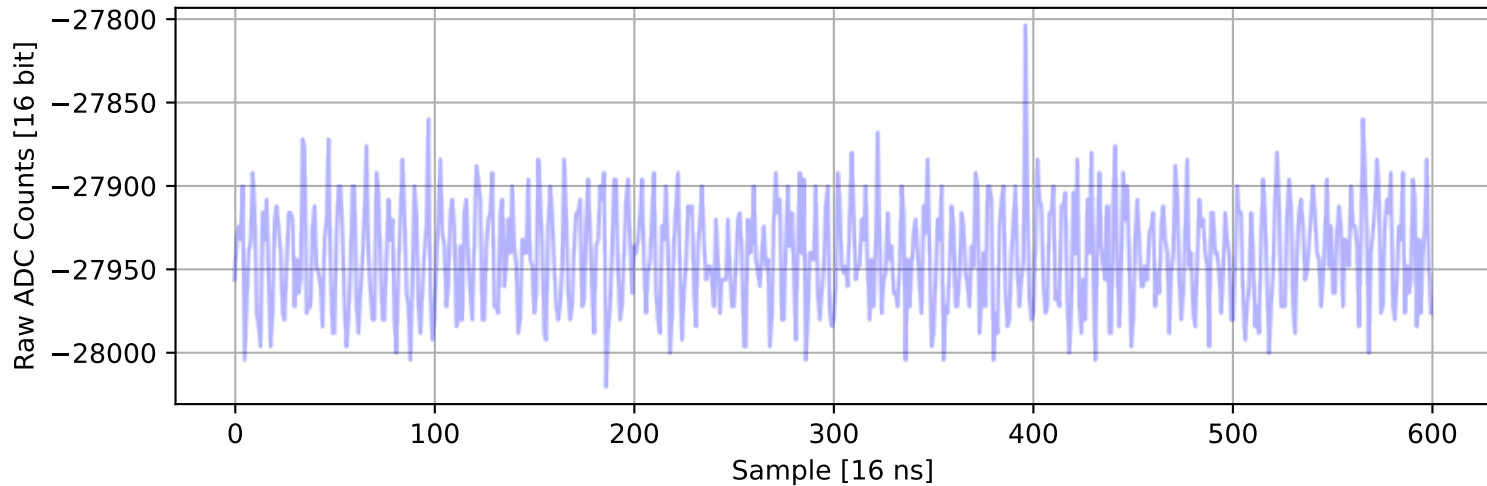
ADC 2, Channel 61, Event 1180: Max Signal Waveform



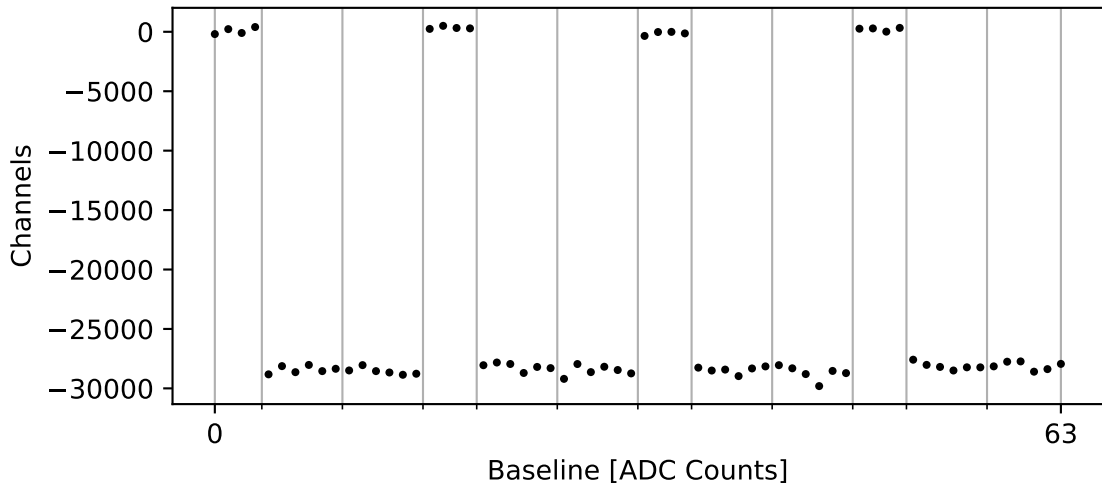
ADC 2, Channel 62, Event 1917: Max Signal Waveform



ADC 2, Channel 63, Event 3038: Max Signal Waveform



ADC 2: Baseline Distribution



ADC 2: Max Signal Distribution

